



## T4VH 335-11ZUE-M20

- 1 Cable entry M 20 x 1.5
- Metal enclosure
- Wide range of alternative actuators
- Good resistance to oil and petroleum spirit
- 40,5 mm x 76 mm x 38 mm
- Actuator heads can be repositioned by 4 x 90°
- Design to EN 50041

## Data

### Ordering data

Product type description	T4VH 335-11ZUE-M20
Article number (order number)	151171739
eCl@ss number, version 12.0	27-27-26-01
eCl@ss number, version 11.0	27-27-26-01
eCl@ss number, version 9.0	27-27-26-01
ETIM number, version 7.0	EC000030
ETIM number, version 6.0	EC000030

### Approvals - Standards

Certificates	cULus CCC
--------------	--------------

### General data

Housing construction form	Norm construction design
---------------------------	--------------------------

Actuator type to EN 50041	A
Housing material	Light alloy die-casting
Housing coating material	painted
Lever material	Metal film
Gross weight	252 g

## General data - Features

Safety functions	Yes
Number of auxiliary contacts	1
Number of safety contacts	1

## Safety classification

Standards	BG-GS-ET-15 EN ISO 13849-1 EN IEC 60947-5-1
Mission time	20 Year(s)

## Safety classification - Safety outputs

B <sub>10D</sub> Normally-closed contact (NC)	20,000,000 Operations
---	-----------------------

## Mechanical data

Actuating element	Roller lever
Roller material	Plastic
Mechanical life, minimum	30,000,000 Operations
Actuating speed, maximum	2.5 m/s
Note (Actuating speed)	Actuating speed with actuating angle 30° to switch axis
Note (Switchover time)	Switchover time in accordance with actuating speed
Actuating torque, minimum	0.3 Nm

## Mechanical data - Connection technique

Termination	Screw terminals M20 x 1.5
Cable section, minimum	0.75 mm <sup>2</sup>
Cable section, maximum	2.5 mm <sup>2</sup>
Note	All indications including the conductor ferrules.

## Mechanical data - connector side B

Connector typ	Female connector
---------------	------------------

## Mechanical data - Dimensions

Length of sensor	60.6 mm
Width of sensor	40.5 mm
Height of sensor	129.5 mm

## Ambient conditions

Degree of protection	IP65 IP67
Ambient temperature	-30 ... +80 °C

## Ambient conditions - Insulation values

Rated insulation voltage $U_i$	500 V
Rated impulse withstand voltage $U_{imp}$	6 kV

## Electrical data

Thermal test current	10 A
Required rated short-circuit current	1,000 A

Utilisation category AC-15	230 VAC
Utilisation category AC-15	4 A
Utilisation category DC-13	24 VDC
Utilisation category DC-13	4 A
Switching element	NO contact, NC contact
Switching principle	Slow action with overlapping contacts
Bounce duration, maximum	2 ms
Maximum switching frequency	5,000 /h
Material of the contacts, electrical	Silver

## Ordering code

Product type description:

(1)(2) 3(3)-(4)Z(5)-(6)-(7)-(8)-(9)

(1)

---

<b>Z</b>	Snap action
<b>T</b>	Slow action (not for AF/S)

(2)

---

<b>S</b>	Plunger S
<b>R</b>	Roller plunger R
<b>H</b>	Roller lever H
<b>10H</b>	Rod lever 10H
<b>7H</b>	Roller lever 7H
<b>1K</b>	Offset roller lever 1K
<b>3K</b>	Angle roller lever 3K
<b>RMS</b>	Brass roller
<b>4V.</b>	Basic device for roller lever (without actuator)

(3)

---

<b>3</b>	slim design
----------	-------------

<b>55</b>	large design
(4)	
<b>11</b>	1 NO contacts/1 NC contact
<b>02</b>	2 NC contact
<b>20</b>	2 NO contacts (not suitable for safety applications)
<b>01/01</b>	1 NC contact left / 1 NC contact right
<b>12</b>	1 NO contact/2 NC contacts
<b>03</b>	3 NC contact
(5)	
<b>H</b>	Slow action with staggered contacts
<b>UE</b>	Slow action with overlapping contacts
<b>2272</b>	2272 Special roller bolt with collar
<b>1183</b>	with aluminium rod
<b>1699-1</b>	Exterior stainless steel bolts and clamp
(6)	
<b>G24</b>	with LED
(7)	
<b>without</b>	Cable entry M20
<b>M20</b>	Cable entry M20
<b>NPT</b>	Cable entry NPT 1/2"
<b>ST</b>	M12 connector with A-coding (Caution! According to EN 60204-1, the versions with connector must only be used in PELV circuits.)
<b>ST-2310</b>	M12 connector with B-coding (Caution! According to EN 60204-1, the versions with connector must only be used in PELV circuits.)
(8)	
<b>2138</b>	Roller lever 7H for position switches with safety function

(9)

1637

Gold-plated contacts

## Pictures

### Product picture (catalogue individual photo)



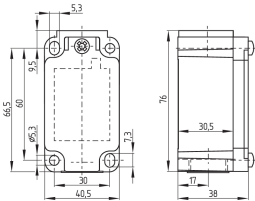
ID: k335hf01

| 1.1 MB | .jpg | 352.778 x 834.319 mm - 1000 x 2365 px - 72 dpi

| 106.3 kB | .png | 74.083 x 174.978 mm - 210 x 496 px - 72 dpi

| 34.5 kB | .jpg | 52.211 x 123.472 mm - 148 x 350 px - 72 dpi

### Dimensional drawing basic component



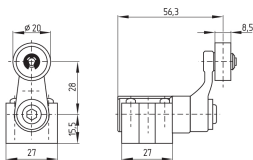
ID: 1-335g01

| 96.7 kB | .cdr |

| 4.5 kB | .png | 74.083 x 51.506 mm - 210 x 146 px - 72 dpi

| 105.8 kB | .jpg | 352.778 x 245.886 mm - 1000 x 697 px - 72 dpi

### Dimensional drawing actuator



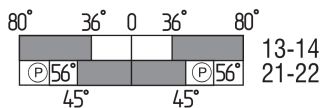
ID: 1h336g01

| 65.6 kB | .cdr |

| 4.1 kB | .png | 74.083 x 51.858 mm - 210 x 147 px - 72 dpi

| 84.5 kB | .jpg | 352.778 x 247.297 mm - 1000 x 701 px - 72 dpi

### Switch travel diagram



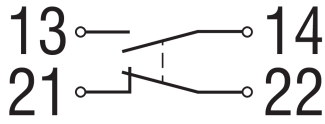
ID: kh335s03

| 31.9 kB | .cdr |

| 2.1 kB | .png | 74.083 x 24.342 mm - 210 x 69 px - 72 dpi

| 66.4 kB | .jpg | 352.778 x 115.711 mm - 1000 x 328 px - 72 dpi

## Diagram



ID: k1o1sk01

| 52.2 kB | .jpg | 352.778 x 143.581 mm - 1000 x 407 px - 72 dpi

| 2.6 kB | .png | 74.083 x 29.986 mm - 210 x 85 px - 72 dpi

Schmersal, Inc., 115 E Stevens Ave, Suite 208, Valhalla, NY 10595

The details and data referred to have been carefully checked. Images may diverge from original. Further technical data can be found in the manual. Technical amendments and errors possible.

Generated on: 15/05/2024, 12:29