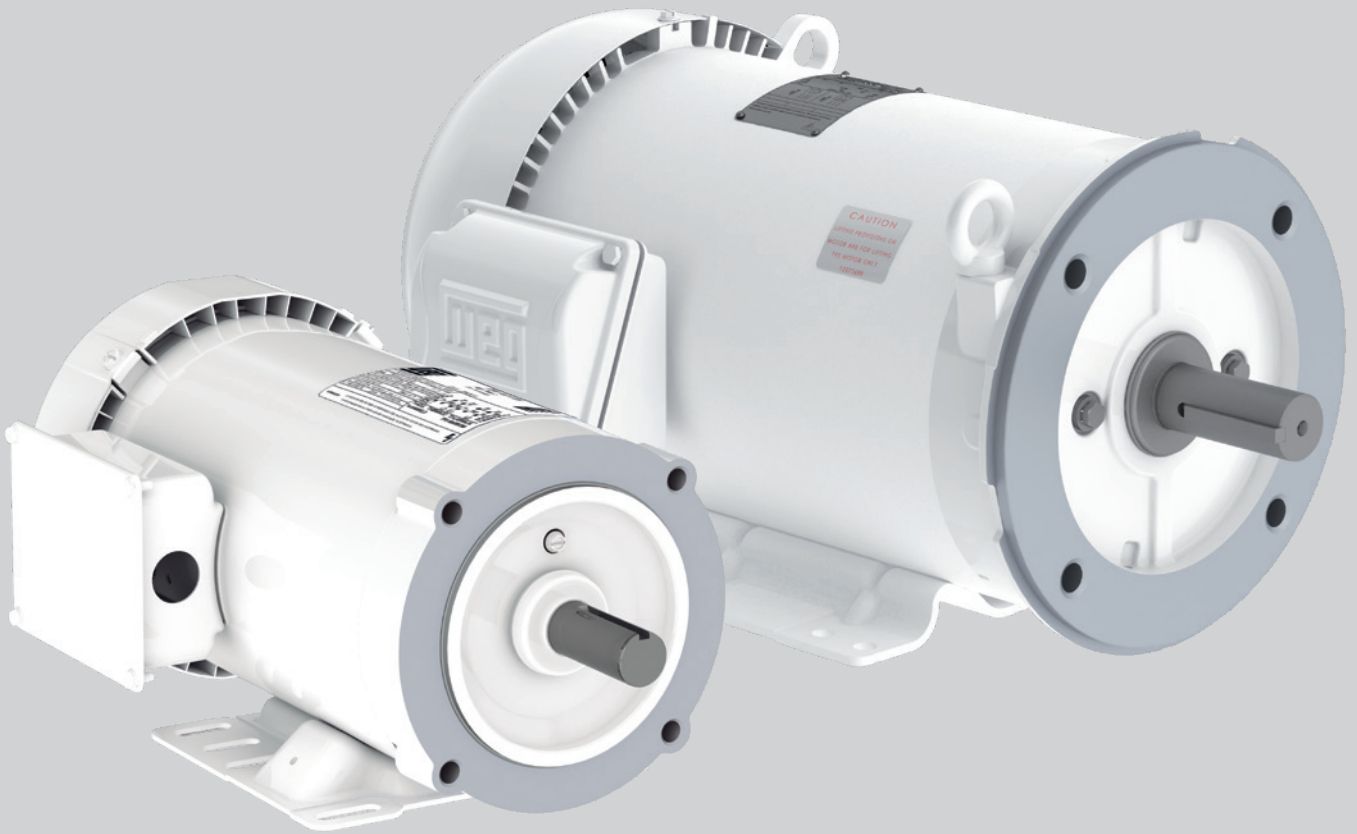


# Hydrowash

Fractional and Integral  
Horse Power Motors



Motors | Automation | Energy | Transmission & Distribution | Coatings

# HYDROWASH™

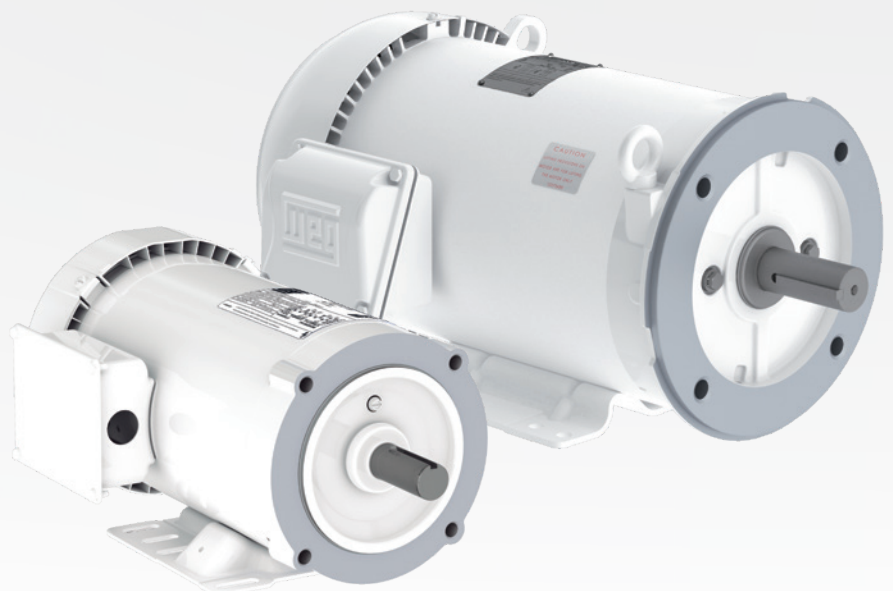
The Washdown line was designed to meet the requirements of industries where there is a constant need for hygiene and cleanliness of the environment through high pressure water jets and/or chemical products. Washdown motors are applied in food, beverage and pharmaceutical industries.

## Standard Features

- Output: 1/2 up to 25 HP
- Frames: 56 up to 254/6T
- Number of poles: 2 up to 6
- Certification CSA/UL
- Efficiency: NEMA Standard and NEMA Premium
- Voltage:
  - Frames 56 and 145T - 208-230/460 V with 9 leads
  - Frames 182/4T and 213/5T - 208-230/460//190-220/380-415 V with 9 leads
  - Frames 254/6T - 208-230/460//190-220/380-415 V with 12 leads
- Service factor: 1.15
- Mounting: F-1
- Insulation class "F" ( $\Delta T$  80 K)
- Degree of protection: IP56
- Shaft material: Stainless Steel (AISI 304)
- Bearing type: Shielded (2RS)
- Permatex on joints for frames 182/4T and above
- Viton O'Ring on joints for frames 56 and 145T
- Color: Porcelain White - Munsell N 9.5
- Coating NOBAC® for frames 180 and above
- Internal painting: Tropicalized (Epoxy for frames 180 and above)
- Breather on non drive endshield
- Vibration: Grade A
- Drive end bearing seal: Oil seal with stainless steel spring and 304 stainless steel high pressure external shaft slinger
- Drive end bearing seal: Oil seal with stainless steel spring and 304 stainless steel high pressure external shaft slinger
- Type of grease: Mobil Polyrex EM
- Fan material: plastic
- Aluminium flanges
- Terminal box material: Aluminium
- External screws and key: Stainless Steel

## Optionals

- Other mountings
- Voltage: 575 V with 6 leads
- Space heaters
- Thermal protection
- Cable glands
- Threaded center hole (shaft)
- Vibration: Grade B
- SGR shaft grounding ring (Inverter use)
- Shaft material: Stainless Steel (AISI 316)

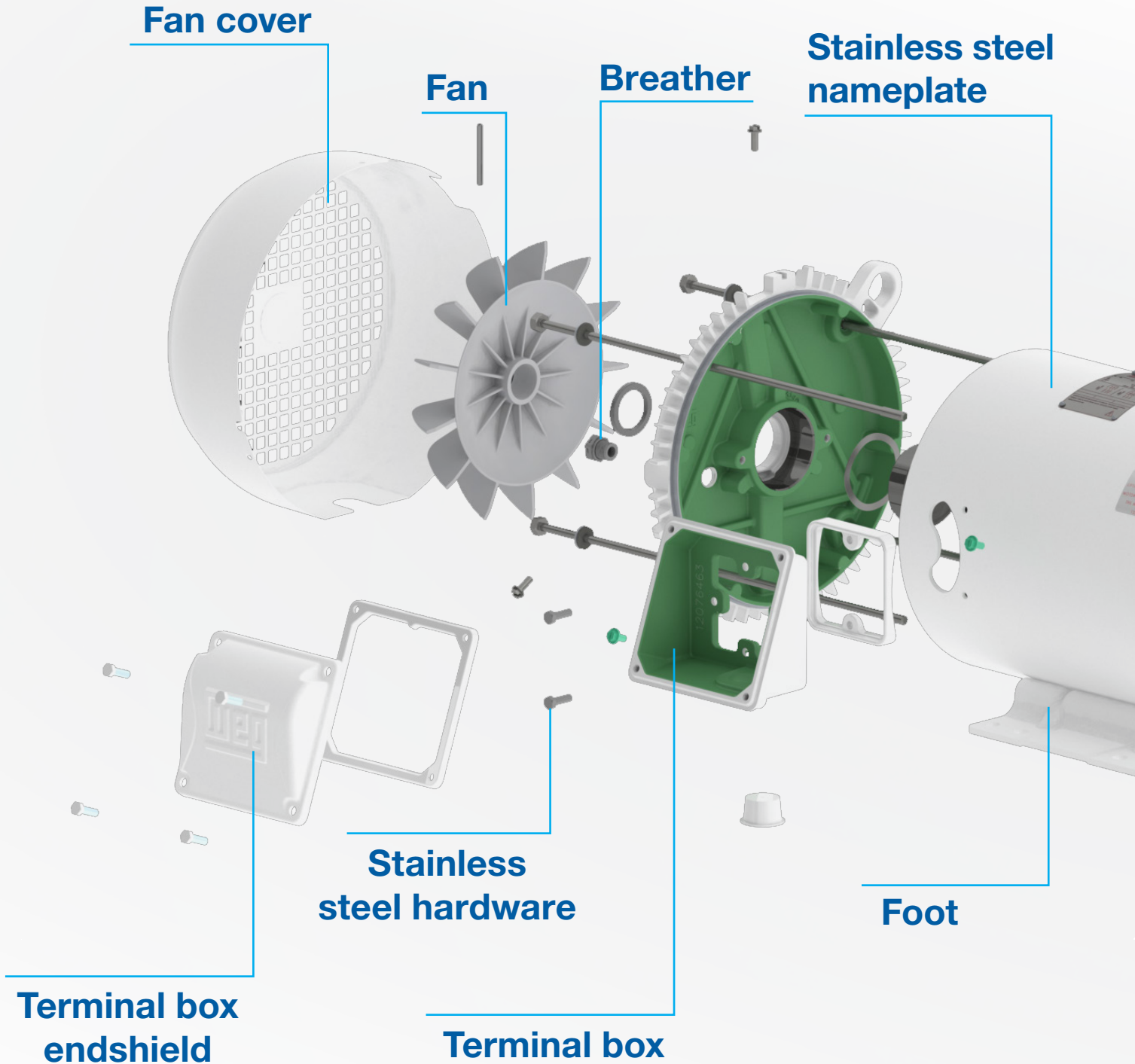


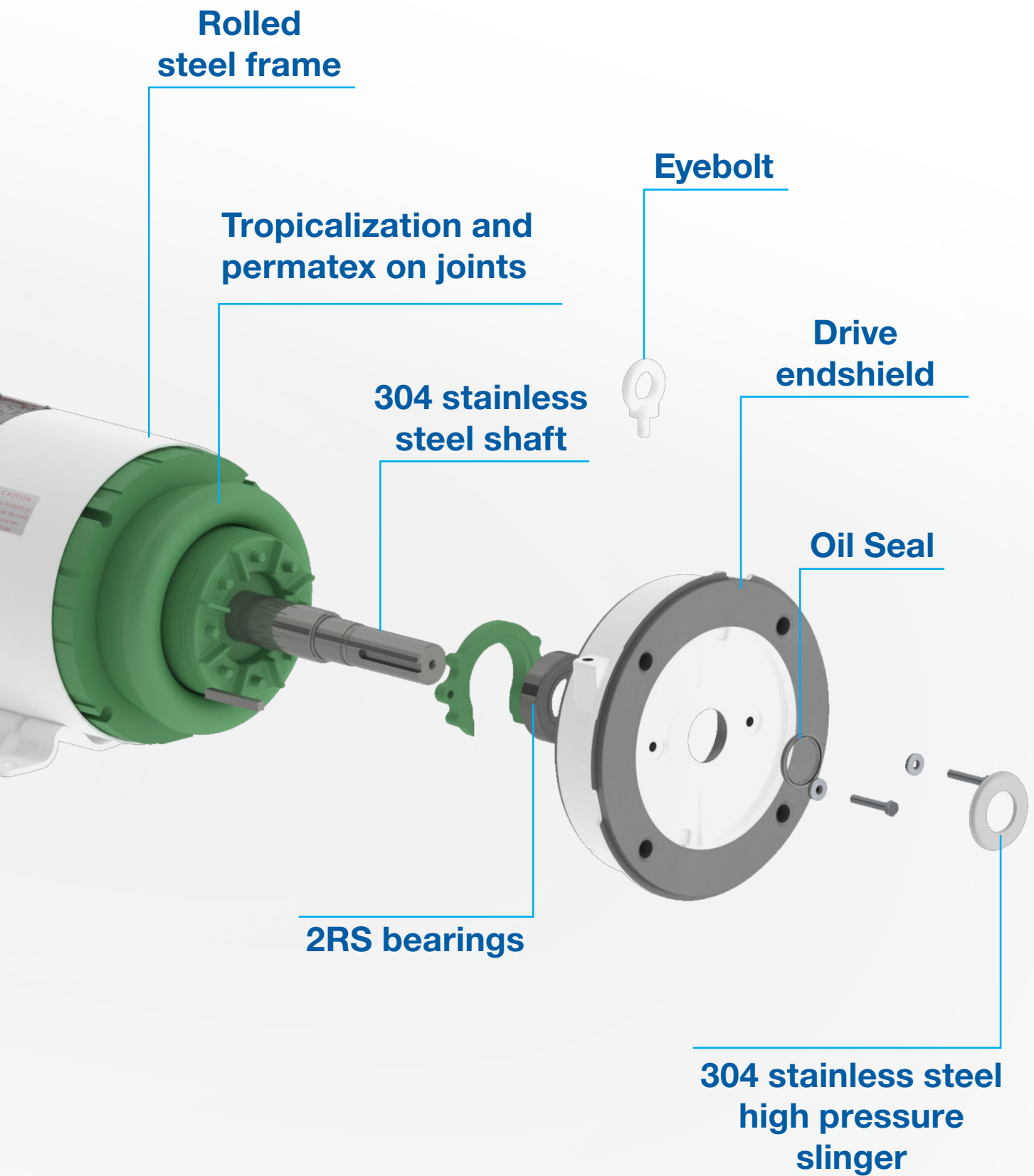






# Details for IHP motors - frames 180-250

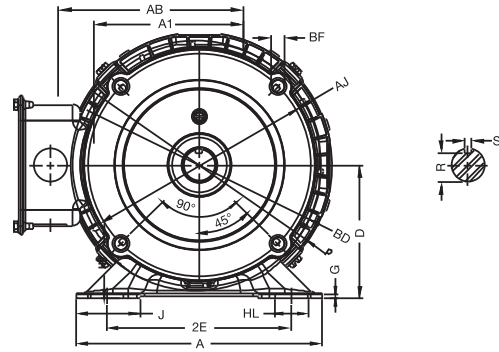
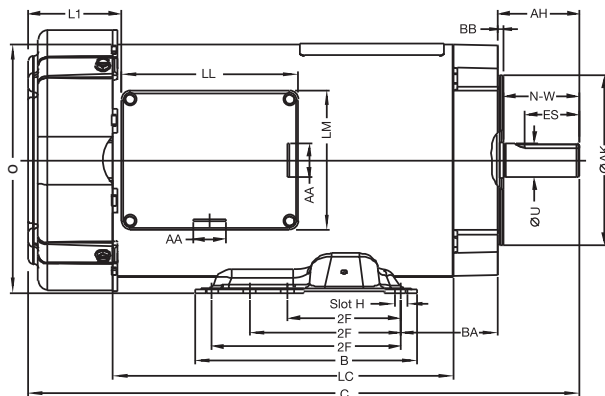




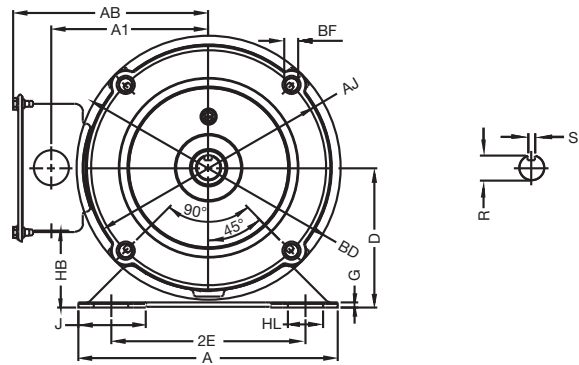
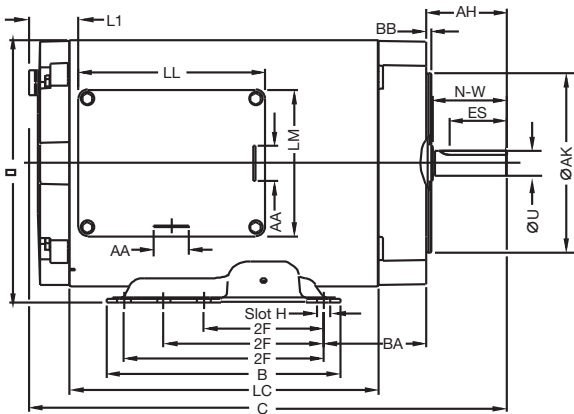
# Mechanical Data

(Dimensions in inches)

## TEFC - Frames 56 and 143



## TENV - Frames 56 and 143

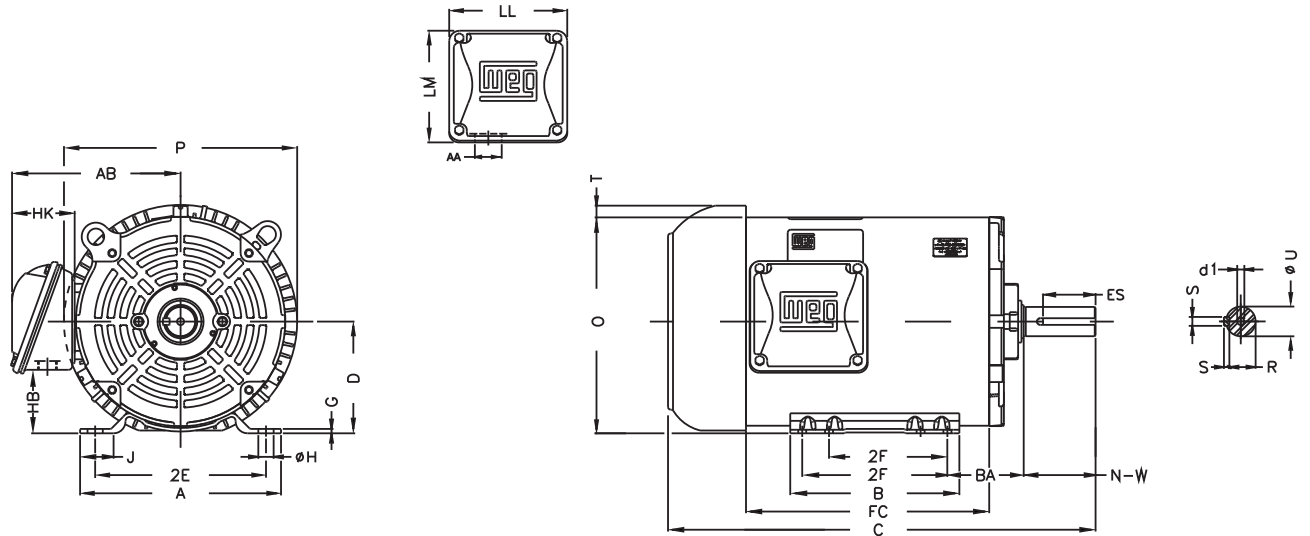


## TEFC and TENV - Frames 56 and 143

Cooling Method	Foot	Power (HP)	Frame	Flange	C	LC	2E	J	A	P	AB	2F	B	BA	Shaft end					D				
															U	N-W	ES	R	S					
TEFC	With	1.5	56HCZ	FC-149	14.44	9	4.88	1.69	6.5	6.98	4.89	3.0/5.0	5.87	2.57	0.625	1.85	1.43	0.51	0.187	3.5				
		2	143/5TCZ		14.56							4.0/5.0			0.875	2								
		1.5	2		14.44							3.0/5.0			0.625	1.85								
	Without	1.5	56HCZ		14.44							3.0/5.0			0.625	1.85					1.43	0.51	0.187	3.5
		2	143/5TCZ		14.56							4.0/5.0			0.875	2								
		1.5	2		14.44							3.0/5.0			0.625	1.85								
TENV	With	0.5	56HCZ	FC-149	10.22	6	4.88	1.69	6.5	-	4.89	3.0/5.0	5.87	2.57	0.625	1.85	1.43	0.51	0.187	3.5				
		0.75	143/5TCZ		10.97	6.75						4.0/5.0			0.875	2								
		1	11.97		7.75	3.0/5.0						0.625			1.85									
	Without	0.5	56HCZ		10.22	6						3.0/5.0			0.625	1.85					1.43	0.51	0.187	3.5
		0.75	143/5TCZ		10.97	6.75						4.0/5.0			0.875	2								
		1	11.97		7.75	3.0/5.0						0.625			1.85									

Cooling Method	Foot	Power (HP)	Frame	G	HB	O	L1	A1	Slot H	HL	LL	LM	AA	BA	AJ	AK	BB	BD	BF	AH					
TEFC	With	1.5	56HCZ	0.098	1.9	6.58	2.46	3.94	0.34	0.88	4.67	3.67	0.88	2.74	5.875	4.5	0.13	6.61	UNC 3/8"x16-2B	2.02					
		2	143/5TCZ											2.71						2.14					
		1.5	2											-						2.02					
	Without	1.5	56HCZ											6.15						5.875	4.5	0.13	6.61	UNC 3/8"x16-2B	2.14
		2	143/5TCZ											-											2.14
		1.5	2											-											2.14
TENV	With	0.5	56HCZ	0.098	1.9	6.58	1.23	3.94	0.34	0.88	4.67	3.67	0.88	2.74	5.875	4.5	0.13	6.61	UNC 3/8"x16-2B						2.02
		0.75	143/5TCZ											2.71											2.14
		1	-											2.02											
	Without	0.5	56HCZ											6.15						5.875	4.5	0.13	6.61	UNC 3/8"x16-2B	2.02
		0.75	143/5TCZ											-											2.02
		1	-											2.14											

### TEFC - Frames 182 to 254

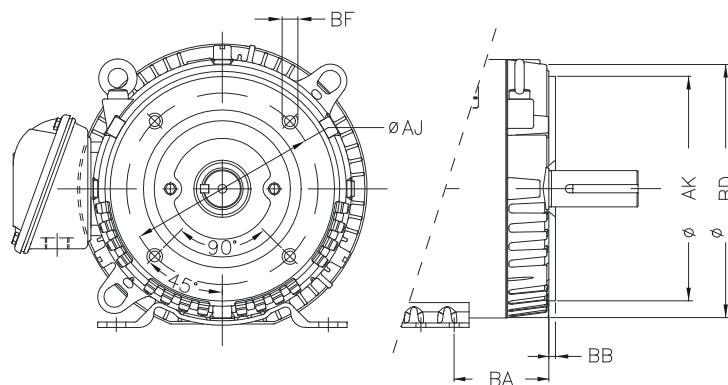


### TEFC - Frames 182 to 254

Power (HP)	Frame	2E	J	A	P	AB	2F	B	BA	Shaft end					
										U	D1	N-W	ES	R	S
1.5	182/4T	7.500	1.299	8.661	9.435	6.693	4.508/5.492	6.299	2.750	1.125	A 3,15	2.750	1.969	0.984	0.250
2															
3	213/5T	8.500	1.575	9.449	10.965	7.972	5.492/7.008	7.953	3.500	1.375	A 4	3.380	2.480	1.203	0.313
5	182/4T	7.500	1.299	8.661	9.435	6.693	4.508/5.492	6.299	2.750	1.125	A 3,15	2.750	1.969	0.984	0.250
	213/5T	8.500	1.575	9.449	10.965	7.972	5.492/7.008	7.953	3.500	1.375	A 4	3.380	2.480	1.203	0.313
7.5	254/6T	10.000	1.693	11.417	13.180	9.449	8.248/10.000	11.417	4.250	1.625		4.000	2.756	1.416	0.375
10	213/5T	8.500	1.575	9.449	10.965	7.972	5.492/7.008	7.953	3.500	1.375	A 4	3.380	2.480	1.203	0.313
15	254/6T	10.000	1.693	11.417	13.180	9.449	8.248/10.000	11.417	4.250	1.625		A 4	4.000	2.756	1.416
20															
25															

Power (HP)	Frame	D	G	HB	O	HK	Hole H	LL	LM	AA	T	C	LC
1.5	182/4T	4.500	0.167	2.776	8.557	2.638	0.406	4.547	4.114	1.118"	0.661	16.339	8.661
2												17.126	9.449
3	213/5T	5.250	0.167	2.972	10.144	3.031	0.406	5.551	5.256	1.377"	0.761	19.291	10.630
	182/4T	4.500		2.776	8.557	2.638		4.547	4.114	1.118"	0.661	17.913	10.236
5	213/5T	5.250	0.167	2.972	10.144	3.031	0.406	5.551	5.256	1.377"	0.761	20.079	11.417
7.5	254/6T	6.250		0.187	3.622	12.010		3.642	0.530	6.299	6.024	1.732"	0.830
10	213/5T	5.250	0.167	2.972	10.144	3.031	0.406	5.551	5.256	1.377"	0.761	22.559	12.992
15	254/6T	6.250		0.187	3.622	12.010		3.642	0.530	6.299	6.024	1.732"	0.830
20			19.291				10.630						
25			23.346				13.780						

### Flange - TEFC - General Purpose - Frames 182 to 254



Frame	BA	Flange					
		AJ	AK	BB	BD	BF	AH
182/4T	4.500	0.167	2.776	8.557	2.638	0.406	4.547
213/5T	5.250		2.972	10.144	3.031	0.406	5.551
254/6T	6.250	0.187	3.622	12.010	3.642	0.530	6.299

Note: C and LC dimensions depend on the output power and number of poles and are shown on the electrical data tables.

For WEG's worldwide  
operations visit our website



[www.weg.net](http://www.weg.net)



 +1 800 5798527

 [info-us@weg.net](mailto:info-us@weg.net)

 Bluffton, Indiana - USA

Cod: 50093494 | Rev: 01 | Date (m/a): 11/2020.

The values shown are subject to change without prior notice.  
The information contained is reference values.