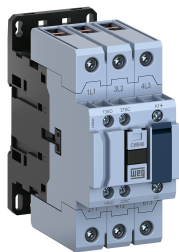


DATASHEET

Contactors



Main Features

| | |
|------------------------------------|---------------|
| Reference | : CWB |
| Product code | : 13538738 |
| Rated current Ie AC-3 (Ue ≤ 440 V) | : 40 A |
| Main contacts (power) | : 3 NO |
| Auxiliary contacts | : 1 NO + 1 NC |
| Control voltage | : 24V DC |
| Type of terminal | : Screw |

Basic data

| | |
|--|------------------------|
| Rated utilization voltage Ue | |
| - IEC / UL | : 1000 V / 600 V |
| Isolation voltage Ui (pollution degree 3) | |
| - IEC / UL | : 1000 V / 600 V |
| Rated impulse withstand voltage Uimp | : 6 kV |
| - Frequency limits [1] | : 25 Hz ... 400 Hz |
| - Mechanical lifespan | |
| AC-operated contactor | : 6 million |
| DC-operated contactor | : 6 million |
| Electrical lifespan - Ie AC3 | : 1.6 million |
| Number of coil terminals (AC Coil) | |
| AC coil contactors | : 2 |
| - DC coil contactors | : 2 |
| Resistance to vibration (IEC 60068-2-6) | |
| opened contactor | : 4 g |
| closed contactor | : 4 g |
| Resistance to mechanical shock (½ sinusoid = 11ms) | |
| opened contactor | : 10 g |
| closed contactor | : 15 g |
| Installation | : DIN 35 mm (EN 50022) |
| Degree of protection (IEC 60529) | |
| Main circuit | : IP10 |
| Control circuit | : IP20 |

Alternating current - control circuit

| | | |
|---|--------------------------------|------------------|
| Isolation voltage Ui (pollution degree 3) | | : 1000 V / 600 V |
| - IEC / UL | | |
| Standard voltages for 50/60 Hz | | : |
| Command circuit operation limits | | |
| - control circuit 60 Hz | - pick up | : |
| | - drop out | : |
| - control circuit 50 Hz | - pick up | : |
| | - drop out | : |
| - Average coil consumption | | |
| - operating at 60 Hz | - closed magnetic circuit | : |
| | - power factor (cos φ) | : |
| | - Thermal power dissipated | : |
| | - closing the magnetic circuit | : |
| - operating at 50 Hz | - closed magnetic circuit | : |
| | - power factor (cos φ) | : |
| | - Thermal power dissipated | : |
| | - closing the magnetic circuit | : |
| Average time of operation | | |
| - closing the NO contacts | | : |
| - opening the NO contacts | | : |

Direct current - command circuit

| | |
|----------------------------------|----------------|
| - IEC / UL | |
| Standard voltages | : 12...500 V |
| Command circuit operation limits | |
| - pick up | : 0,8...1,1xUs |
| - drop out | : 0.1...0.6xUs |
| Average consumption | |
| - closed magnetic circuit | : 8...13,2 W |
| - closing the magnetic circuit | : 95...116 W |
| Thermal power dissipated | : 8...13,2 W |
| Average time of operation | |
| - closing the NO contacts | : 20...30 ms |
| - opening the NO contacts | : 4...8 ms |

Main contacts (power)

| | |
|------------------------------|--------|
| Rated utilization current Ie | |
| - AC-3 (Ue ≤ 440 V) | : 40 A |

DATASHEET

Contactors



| | |
|--|------------------|
| - AC-4 (Ue ≤ 440 V) | : 18,5 A |
| - AC-1 (θ ≤ 55 °C, Ue ≤ 690 V) | : 60 A |
| Rated utilization voltage Ue | |
| - IEC / UL | : 1000 V / 600 V |
| Number of main contacts | : 3 NO |
| Establishment capacity (IEC 60947) | : 550 A |
| Breaking capacity (IEC/EN 60947) | |
| - Ue≤400V | : 550 A |
| - Ue=500V | : 480 A |
| - Ue=690V | : 350 A |
| Temporary permissible current (without previously current conduction during 15 min at θ ≤ 40 °C) | |
| - 1 sec | : 720 A |
| - 10 sec | : 320 A |
| - 10 sec | : 320 A |
| - 1 min | : |
| - 10 min | : 00013 |
| Protection against short circuit of the contacts main fuse (gL/gG) | |
| - @600V - UL/CSA | : 5 kA |
| - type 1 coordination | : 80 A |
| - type 2 coordination | : Not available |
| Average power dissipated per pole | |
| AC-1 (θ ≤ 55 °C, Ue ≤ 690 V) | : 6 W |
| AC-3 (Ue ≤ 440 V) | : 3 W |
| Utilization category AC-3 | |
| Rated current Ie (θ ≤ 55 °C) | |
| - Ue ≤ 440V | : 40 A |
| - Ue ≤ 500V | : 35 A |
| - Ue ≤ 690V | : 32 A |
| Maximum percentage (600 ops./h) | : 100 % |

Orientative values of power (IEC)-three-phase induction motors (50/60 Hz)-IV poles-1800 rpm

| Voltage | kW | cv or HP |
|-------------|---------|----------|
| 220 / 240 V | 11 kW | 15 cv |
| 380 / 400 V | 18,5 kW | 25 HP |
| 415 / 440 V | 22 kW | 29 cv |
| 500 V | 22 kW | 29 cv |
| 660 / 690 V | 30 kW | 40 cv |

Orientative values of power (UL)

| Voltage | 1 Phase | 3 Phase |
|---------|----------------|---------------|
| 120 V | 3 | Not available |
| 200 V | Not applicable | 10 |
| 208 V | Not available | Not available |
| 240 V | 7.5 | 10 |
| 480 V | Not available | 30 |
| 600 V | Not available | 30 |

Utilization category AC-4

Rated current Ie (θ ≤ 55 °C)

| | |
|-------------|----------|
| - Ue ≤ 440V | : 18,5 A |
| - Ue ≤ 500V | : 17,5 A |
| - Ue ≤ 690V | : 14 A |

Orientative values of power (IEC)-three-phase induction motors (50/60 Hz)-IV poles-1800 rpm

| Voltage | kW | cv or HP |
|-------------|---------|----------|
| 220 / 240 V | 4.5 kW | 6 HP |
| 380 / 400 V | 9.2 kW | 12.3 HP |
| 415 / 440 V | 11 kW | 14.7 HP |
| 500 V | 11 kW | 14.7 HP |
| 660 / 690 V | 12.5 kW | 16.8 HP |

Utilization category AC-1 (3 P/NA)

Maximum percentage (600 ops./h)

: 1

Maximum power operation θ ≤ 55°C (three resistors)

| Voltage | Power |
|-------------|---------|
| 220 / 240 V | 22.5 kW |
| 380 / 400 V | 39.5 kW |
| 415 / 440 V | 45.5 kW |
| 500 V | 52 kW |
| 660 / 690 V | 66 kW |

Auxiliary contacts

| | |
|-----------------------|------------------|
| Standards compliance | : IEC 600947-5-1 |
| Insulation voltage Ui | |
| - IEC / UL | : 1000 V / 600 V |

DATASHEET

Contactors



Rated utilization voltage U_e
 - IEC / UL : 690 V / 690 V
 Conventional thermal current I_{th} ($\theta \leq 55^\circ\text{C}$) : 10 A
 Rated current I_e - IEC 60947-5-1/AC-15
 - 220 / 240 V : 10 A
 - 380 / 440 V : 4 A
 - 500 V : 2,5 A
 - 660 / 690 V : 1,5 A
 Rated current I_e - IEC 60947-5-1/DC-13
 - 24 V : 4 A
 - 48 V : 2 A
 - 110 V : 0,7 A
 - 220 V : 0,3 A
 - 440 V : 0,15 A
 Establishment capacity - (AC-15 and $U_e \leq 690\text{V}$ 50/60Hz) : 10 x I_e
 Interruption capacity - (AC-15 and $U_e \leq 400\text{V}$ 50/60Hz) : 1 x I_e
 Protection against short circuit of the contacts main fuse (gL/gG) : 10 A
 Control circuit reliability : 17/5 V/mA
 Electrical lifespan : 1 Million
 Mechanical lifespan : 6 million
 Non-overlapping time between NO and NC contacts : 1,5 ms
 Impedance per pole : 2,5 m Ω

Connection

Main contacts
 Type of the screw : M6 internal hexagonal
 Section of the conductors

| Type of the conductor | Section (IEC) | Section (UL) |
|---------------------------------|-------------------|--------------|
| Rigid cable | 1 x Not available | 1 x |
| | 2 x Not available | 2 x |
| Flexible cable without terminal | 1 x Not available | 1 x |
| | 2 x Not available | 2 x |
| Flexible cable with terminal | 1 x Not contain | 1 x |
| | 2 x Not contain | 2 x |

Tightening torque (IEC/UL) : 5 Nm / 45 lb.in
 Control circuit
 Type of the screw : M3,5 Flat/Phillips
 Section of the conductors

| Type of the conductor | Section (IEC) | Section (UL) |
|---------------------------------|-----------------------------|--------------|
| Rigid cable | 1 x 1...4 mm ² | 1 x |
| | 2 x 1...4 mm ² | 2 x |
| Flexible cable without terminal | 1 x 1...4 mm ² | 1 x |
| | 2 x 1...4 mm ² | 2 x |
| Flexible cable with terminal | 1 x 1...4 mm ² | 1 x |
| | 2 x 1...2,5 mm ² | 2 x |

Tightening torque (IEC/UL) : 1 Nm / 8.8 lb.in

Direct current application

Utilization category DC-1 (L/R \leq 1 ms)

| Voltage | Rated utilization current (I_e) | | | |
|------------------------|-------------------------------------|------|------|---------------|
| | Pole(s) in series | | | |
| | 1 | 2 | 3 | 4 |
| $U_e \leq 24\text{V}$ | 60 A | 60 A | 60 A | Not available |
| $U_e \leq 48\text{V}$ | 60 A | 60 A | 60 A | Not available |
| $U_e \leq 60\text{V}$ | 60 A | 60 A | 60 A | Not available |
| $U_e \leq 125\text{V}$ | 15 A | 60 A | 60 A | Not available |
| $U_e \leq 220\text{V}$ | 2 A | 10 A | 50 A | Not available |
| $U_e \leq 440\text{V}$ | 1 A | 2 A | 10 A | Not available |
| $U_e \leq 600\text{V}$ | Not available | 1 A | 2 A | Not available |

Utilization category DC-3 (L/R \leq 2.5 ms)

| Voltage | Rated utilization current (I_e) | | | |
|------------------------|-------------------------------------|---------------|------|---------------|
| | Pole(s) in series | | | |
| | 1 | 2 | 3 | 4 |
| $U_e \leq 24\text{V}$ | 55 A | 55 A | 55 A | Not available |
| $U_e \leq 48\text{V}$ | 55 A | 55 A | 55 A | Not available |
| $U_e \leq 60\text{V}$ | 55 A | 55 A | 55 A | Not available |
| $U_e \leq 125\text{V}$ | 5 A | 44 A | 55 A | Not available |
| $U_e \leq 220\text{V}$ | 1 A | 5 A | 45 A | Not available |
| $U_e \leq 440\text{V}$ | Not available | 1 A | 5 A | Not available |
| $U_e \leq 600\text{V}$ | Not available | Not available | 1 A | Not available |

DATASHEET

Contactors



Operation category DC-5 (L/R ≤ 15ms)

| Voltage | Rated utilization current (Ie) | | | |
|-----------|--------------------------------|---------------|---------------|---------------|
| | Pole(s) in series | | | |
| | 1 | 2 | 3 | 4 |
| Ue ≤ 24V | 55 A | 55 A | 55 A | Not available |
| Ue ≤ 48V | 55 A | 55 A | 55 A | Not available |
| Ue ≤ 60V | 55 A | 55 A | 55 A | Not available |
| Ue ≤ 125V | 5 A | 44 A | 55 A | Not available |
| Ue ≤ 220V | Not available | 4 A | 41 A | Not available |
| Ue ≤ 440V | Not available | Not available | Not available | Not available |
| Ue ≤ 600V | Not available | Not available | Not available | Not available |

Ambient temperature

Operation : -25 °C ... +55 °C

Storage : -55 °C ... +80 °C

Maximum altitude with no change of rated values [2] : 3000 m

Dimensions

Height : 115 mm (4.53 in)

Width : 54 mm (2.13 in)

Depth : 120.7 mm (4.75 in)

Weight : 0.98 kg

Standards

IEC 60947-1

UL 508

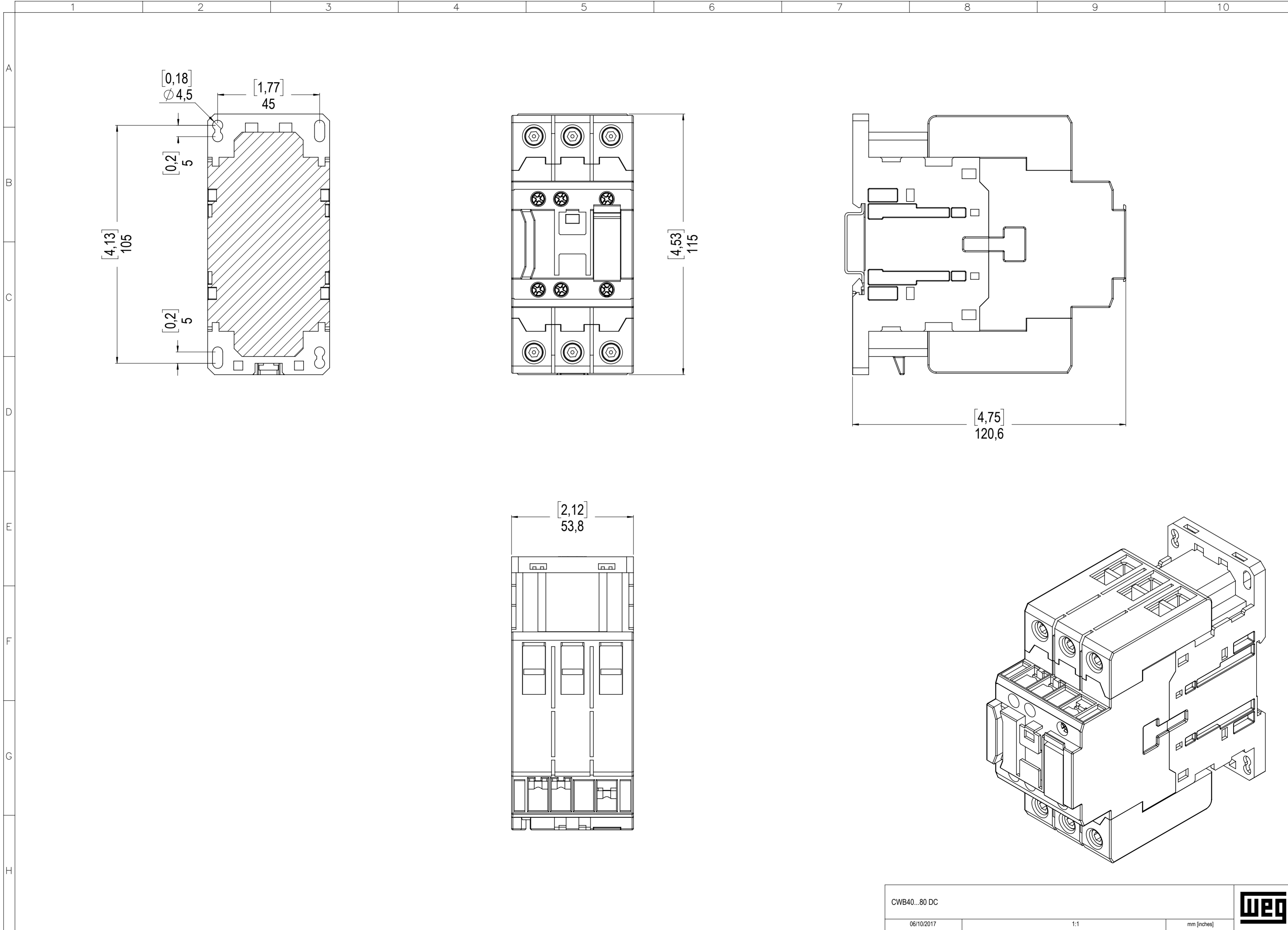
Certifications

CE, UL and EAC

Notes

1) Values above 60 Hz should have current reduction;

2) For altitudes of 3000 to 4000 m (0.90 x 0.80 x Ie and Ui) and from 4000 to 5000 m (0.80 x 0.75 x Ie and Ui).



A4 - Sujeito a alteração sem aviso prévio. As informações contidas aqui são valores de referência. The values shown are subject to change without prior notice. The information is for reference only. Los valores demostrados pueden ser cambiados sin aviso previo. La información es de referencia solamente.