

DATA SHEET



Single Phase Induction Motor - Squirrel Cage

Customer :				
Product line	: Rolled Steel 00021 Single-Phase Split Phase			
Product code :	15413673			
Catalog # :	.5018AS1BPFW56-S			
Frame : W56 Output : 0.5 HP (0.37 kW) Poles : 4 Frequency : 60 Hz Rated voltage : 115/208-230 V Rated current : 8.06/3.93-4.03 A L. R. Amperes : 51.6/25.2-25.8 A LRC : 6.4x(Code N) No load current : 7.60/3.20-3.80 A Rated speed : 1730 rpm Slip : 3.89 % Rated torque : 0.210 kgfm Locked rotor torque : 150 % Breakdown torque : 254 % Insulation class : F Service factor : 1.25	Locked rotor time : 12s (cold) 7s (hot) Temperature rise : 105 K Duty cycle : Cont.(S1) Ambient temperature : -20°C to +40°C Altitude : 1000 m.a.s.l. Protection degree : IP55 Cooling method : IC410 - TEAO Mounting : F-1 Rotation ¹ : Both (CW and CCW) Starting method : Direct On Line Approx. weight ³ : 10.2 kg			
Output	25% 50% 75% 100%			
Efficiency (%)	0.000 52.1 56.5 63.4			
Power Factor	0.00 0.44 0.54 0.63			
Foundation loads				
Max. traction	: 12 kgf			
Max. compression	: 22 kgf			
Bearing type	: <u>Drive end</u> 6203 ZZ <u>Non drive end</u> 6202 ZZ			
Sealing	: V'Ring Without Bearing Seal			
Lubrication interval	: 0 h 0 h			
Lubricant amount	: 0 g 0 g			
Lubricant type	: Mobil Polyrex EM			
Notes				
This revision replaces and cancel the previous one, which must be eliminated. (1) Looking the motor from the shaft end. (2) Measured at 1m and with tolerance of +3dB(A). (3) Approximate weight subject to changes after manufacturing process. (4) At 100% of full load.				
These are average values based on tests with sinusoidal power supply, subject to the tolerances stipulated in NEMA MG-1.				
Rev.	Changes Summary	Performed	Checked	Date
Performed by				
Checked by			Page	Revision
Date	21/12/2021		1 / 2	

LOAD PERFORMANCE CURVE

Single Phase Induction Motor - Squirrel Cage

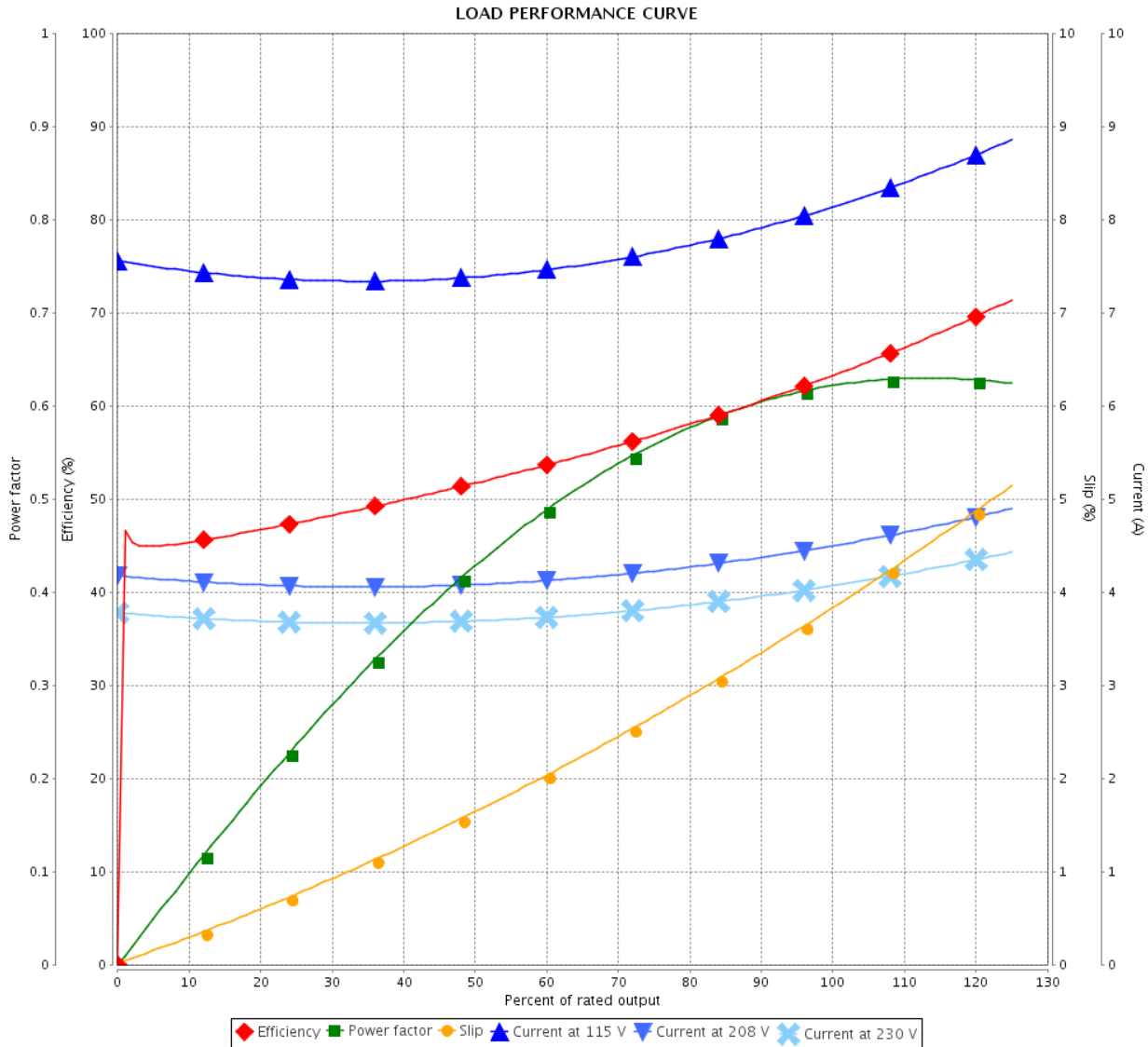


Customer : _____

Product line : Rolled Steel 00021 Single-Phase Split Phase

Product code : 15413673

Catalog # : .5018AS1BPFW56-S



Performance : 115/208-230 V 60 Hz 4P

Rated current : 8.06/3.93-4.03 A
 LRC : 6.4
 Rated torque : 0.210 kgfm
 Locked rotor torque : 150 %
 Breakdown torque : 254 %
 Rated speed : 1730 rpm

Moment of inertia (J)
 Duty cycle : Cont.(S1)
 Insulation class : F
 Service factor : 1.25
 Temperature rise : 105 K

Rev.	Changes Summary	Performed	Checked	Date
Performed by			Page 2 / 2	Revision
Checked by				
Date	21/12/2021			

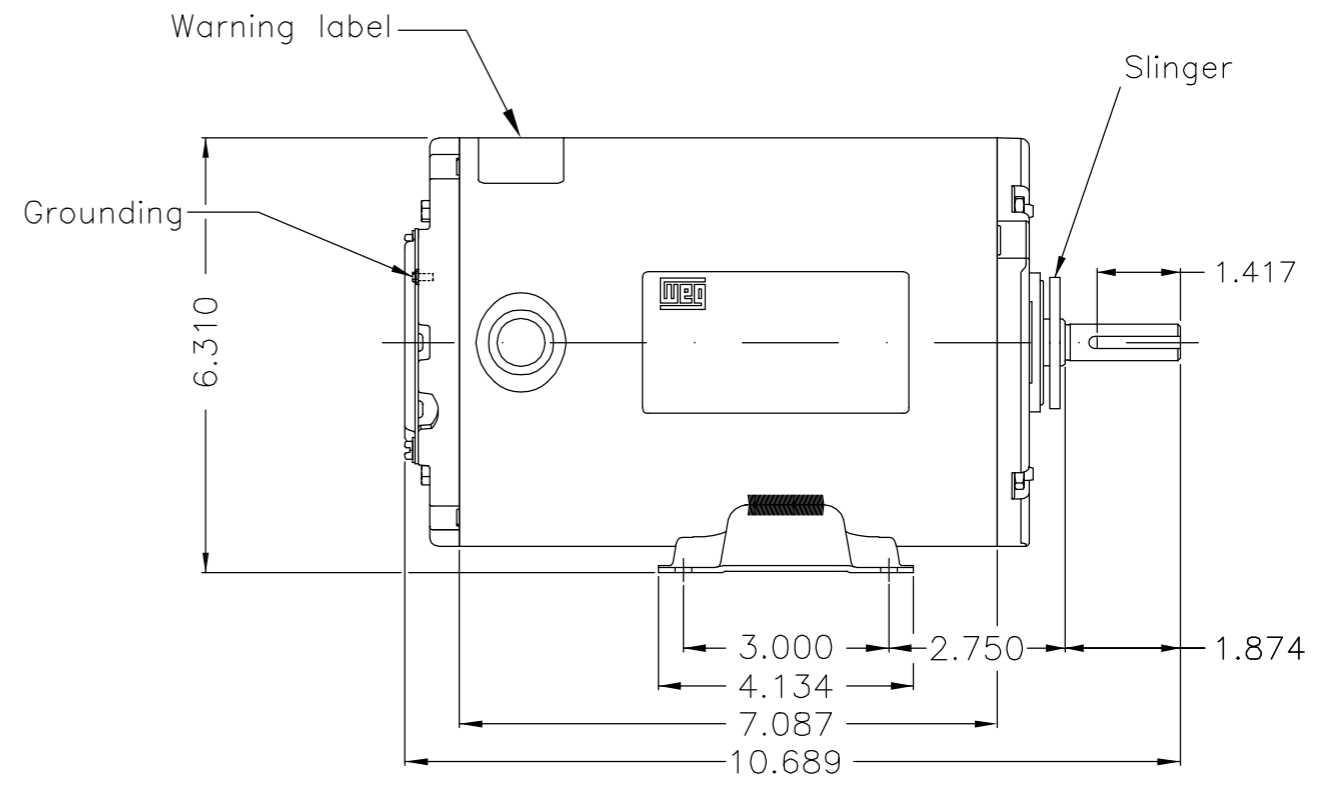
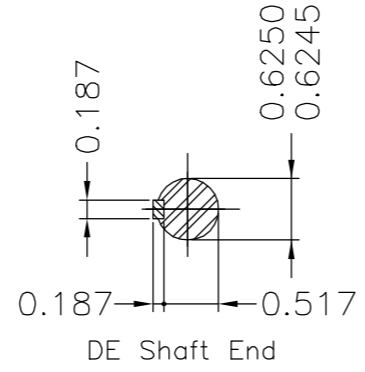
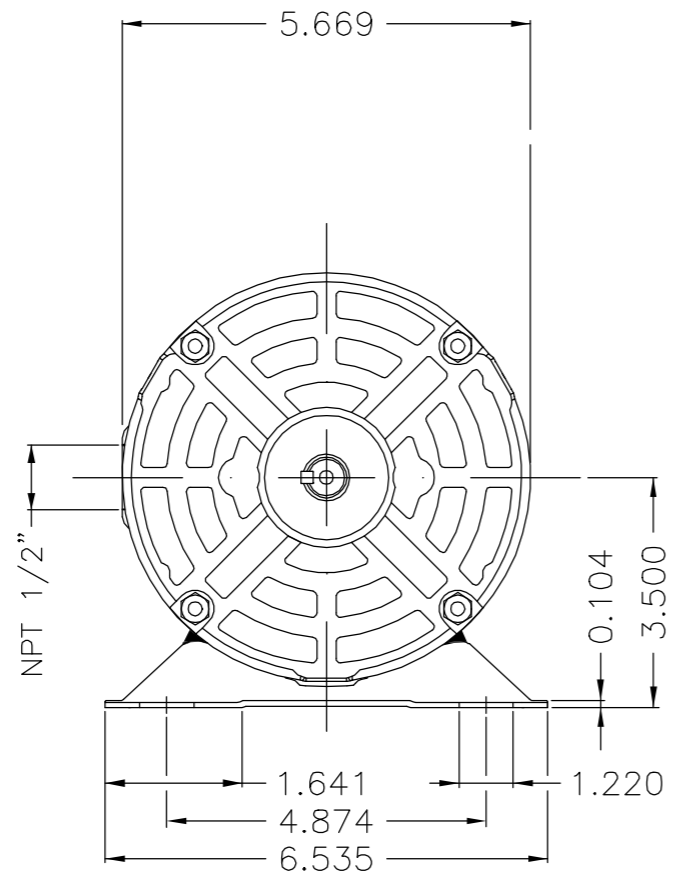
EJE/SHAFT	
ESTÁNDAR/STANDARD	X
OPCIONAL/OPTIONAL	
ESPECIAL/SPECIAL	

Dimensiones en pulgadas
Dimensions in inches

PRELIMINARY DOCUMENT
Not to be used for installation purposes.

THIS IS AN UPDATED REVISION, THE PREVIOUS ONE MUST BE DISREGARDED.

A
B
C
D
E



- Indicación etiqueta de advertencia/Indicating warning label
- Refuerzo de soldadura en el pie / Weld reinforcement on the foot
- Slinger en la delantera / DE Slinger
- Protector térmico fenólico - Automático / Phenolic thermal protector - automatic
- Color Munsell N 1 negro mate / Color Munsell N 1 matte black
- Plan de pintura 207N / Painting plan 207N
- Forma constructiva F-1/B3R(D) / Mounting F-1/B3R(D)

WEG ELECTRIC CORPORATION - WEC

OV: 21256907

500001801243		UPDATE IP RATING ACCORDING 417390210	EJESUS	HERNANDEZA	HERNANDEZA	07.08.2020	04
500001778520		UPDATE LENGTH ACC. CLAIM 417351958	EJESUS	ISAAVEDRA	ISAAVEDRA	18.06.2020	03
ECM	LOC	SUMMARY OF MODIFICATIONS	EXECUTED	CHECKED	RELEASED	DATE	VER
EXECUTED	PNAVA	SINGLE PHASE MOTOR CLOSED ROLLED STEEL FRAME W56 IP55 TEAO	10007510803				
CHECKED	MORALESR		000	04			
RELEASED	MORALESR						
REL DT	25.03.2020	WMX	Huehuetoca	Product Engineering	SHEET	1 / 1	

0.5 HP 04 Poles 60Hz 417254845

UNCONTROLLED COPY

RELEASED

ZME A3



MADE IN MEXICO
15413673

MODEL .5018AS1BPFW56-S
W01.ME0IC0S0X

Thermally Protected

PH1	Hz 60	FR W56	ALT	1000 m.a.s.l	ENCL TEAO	IP55
V	115/208-230		A	8.06/3.93-4.03		
HP	0.50		kW	0.37		
SF	1.25		SFA	8.94/3.93-4.47		
RPM	1730		PF	0.63		
AMB	40°C		INS CL F		AVG. F.L. EFF.	63.4%
DUTY CONT.			DES	CODE N		

USABLE @ 208V SF1.00

Electric Motor

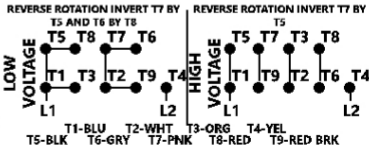
DE 8203-ZZ
ODE 8202-ZZ

MOBIL POLYREX EM



WARNING: Motor must be grounded in accordance with local and national electrical codes to prevent serious electrical shocks. Disconnect power source before servicing unit.

AVERTISSEMENT: Le moteur doit être mis à la terre conformément aux codes électriques locaux nationaux afin d'éviter tout choc électrique grave. Déconnectez l'alimentation avant l'entretien de la machine.



B/N:

20JUL2021