

# DATA SHEET



## Single Phase Induction Motor - Squirrel Cage

Customer :					
Product line : Rolled Steel Single-Phase		Product code : 13195118			
		Catalog # : .2518OT1B48-S			
Frame : 48 Output : 0.25 HP (0.18 kW) Poles : 4 Frequency : 60 Hz Rated voltage : 115/208-230 V Rated current : 2.92/1.77-1.46 A L. R. Amperes : 15.5/9.38-7.74 A LRC : 5.3x(Code J) No load current : 2.00/0.862-1.00 A Rated speed : 1740 rpm Slip : 3.33 % Rated torque : 0.754 ft.lb Locked rotor torque : 290 % Breakdown torque : 300 % Insulation class : F Service factor : 1.35 Moment of inertia (J) : 0.0358 sq.ft.lb Design : N		Locked rotor time : 36s (cold) 20s (hot) Temperature rise : 80 K Duty cycle : Cont.(S1) Ambient temperature : -20°C to +40°C Altitude : 1000 m.a.s.l. Cooling method : IC01 - ODP Mounting : F-1 Rotation <sup>1</sup> : Both (CW and CCW) Noise level <sup>2</sup> : 50.0 dB(A) Starting method : Direct On Line Approx. weight <sup>3</sup> : 16.1 lb			
Output	25%	50%	75%	100%	
Efficiency (%)	52.7	56.0	64.0	68.5	
Power Factor	0.33	0.56	0.65	0.78	
Foundation loads					
Max. traction : 17 lb					
Max. compression : 33 lb					
		<u>Drive end</u>	<u>Non drive end</u>		
Bearing type	:	6203 ZZ	6202 ZZ		
Sealing	:	Without Bearing Seal	Without Bearing Seal		
Lubrication interval	:	-	-		
Lubricant amount	:	-	-		
Lubricant type	:	Mobil Polyrex EM			
Notes					
This revision replaces and cancel the previous one, which must be eliminated. (1) Looking the motor from the shaft end. (2) Measured at 1m and with tolerance of +3dB(A). (3) Approximate weight subject to changes after manufacturing process. (4) At 100% of full load.			These are average values based on tests with sinusoidal power supply, subject to the tolerances stipulated in NEMA MG-1.		
Rev.	Changes Summary		Performed	Checked	Date
Performed by					
Checked by				Page	Revision
Date	30/11/2020			1 / 2	

# LOAD PERFORMANCE CURVE

Single Phase Induction Motor - Squirrel Cage

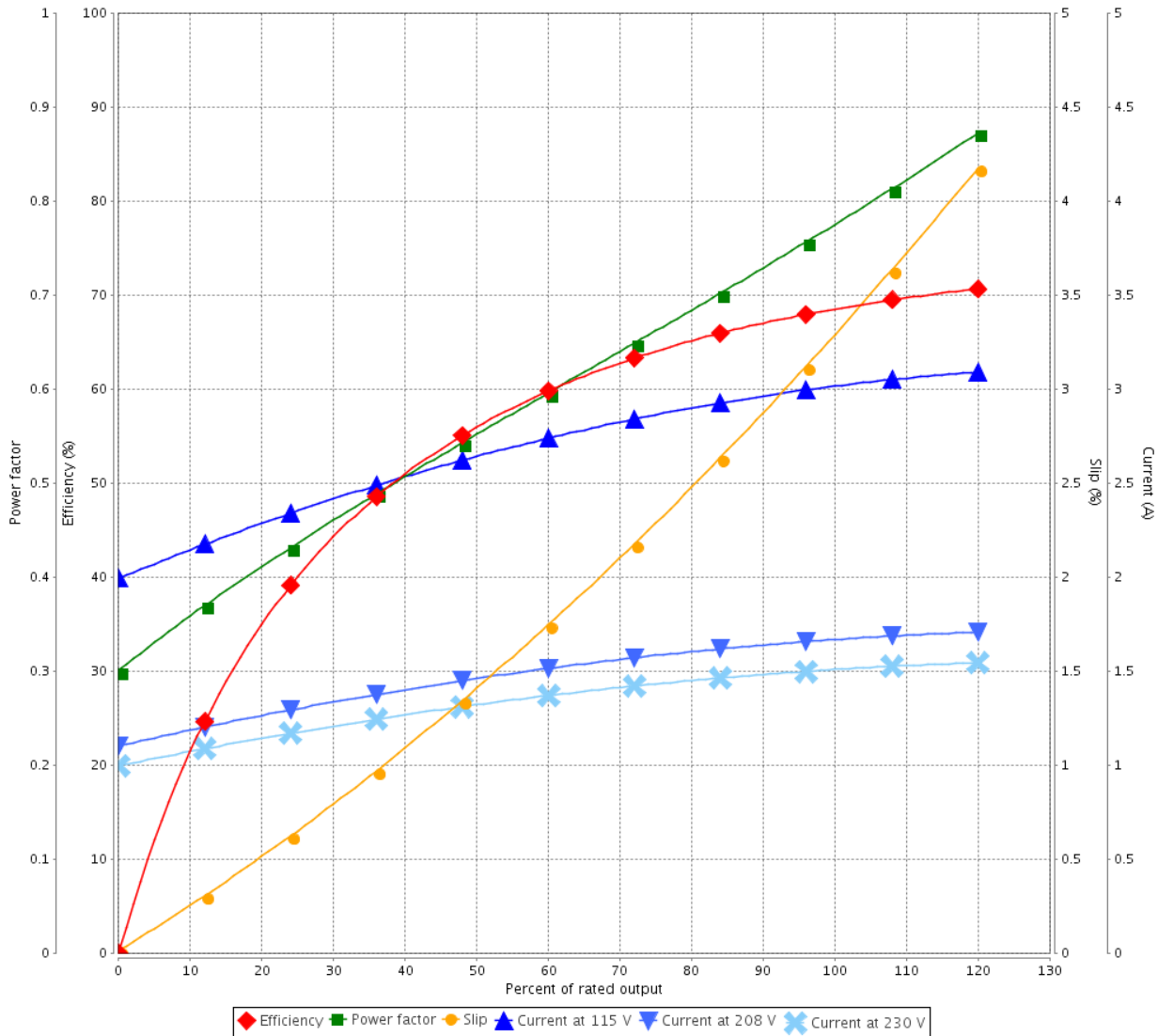


Customer : \_\_\_\_\_

Product line : Rolled Steel Single-Phase

Product code : 13195118  
Catalog # : .2518OT1B48-S

LOAD PERFORMANCE CURVE



Performance : 115/208-230 V 60 Hz 4P

Rated current : 2.92/1.77-1.46 A  
LRC : 5.3  
Rated torque : 0.754 ft.lb  
Locked rotor torque : 290 %  
Breakdown torque : 300 %  
Rated speed : 1740 rpm

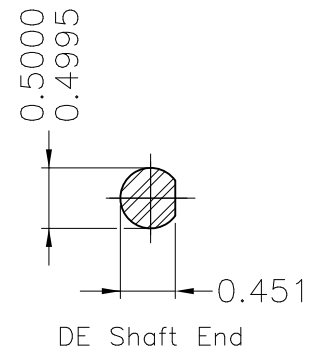
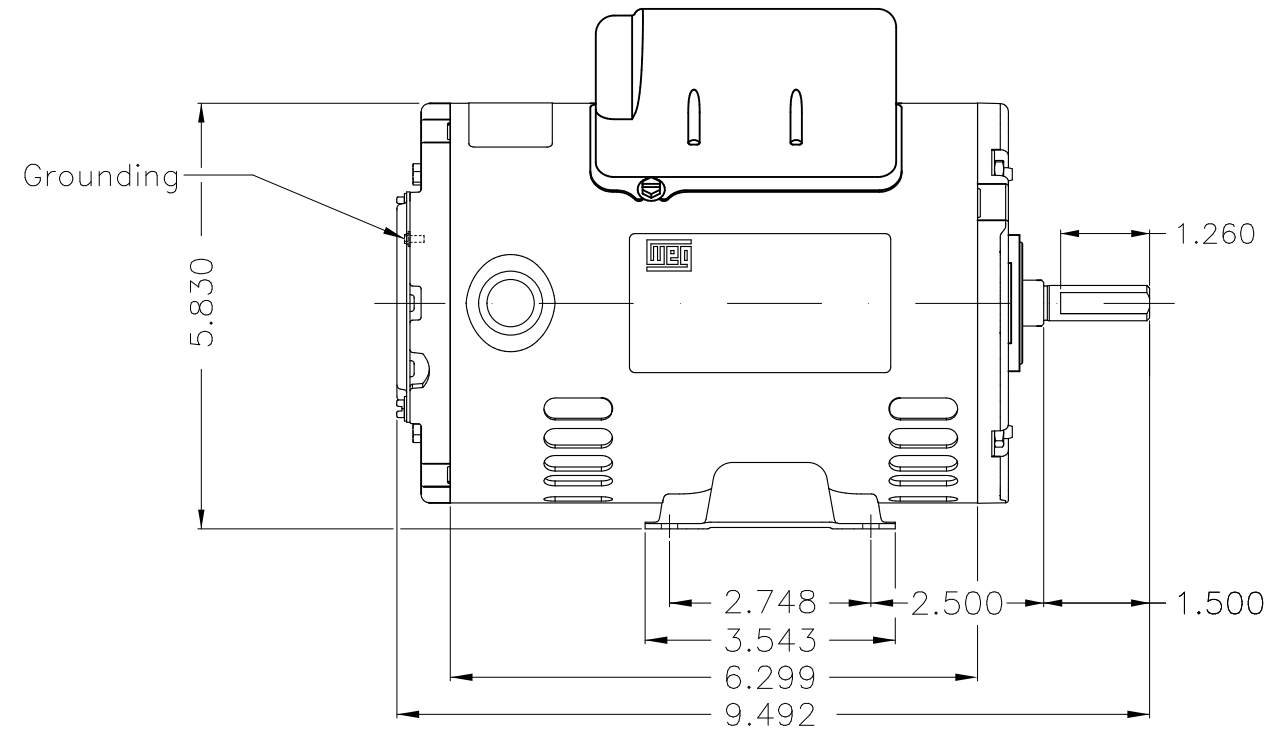
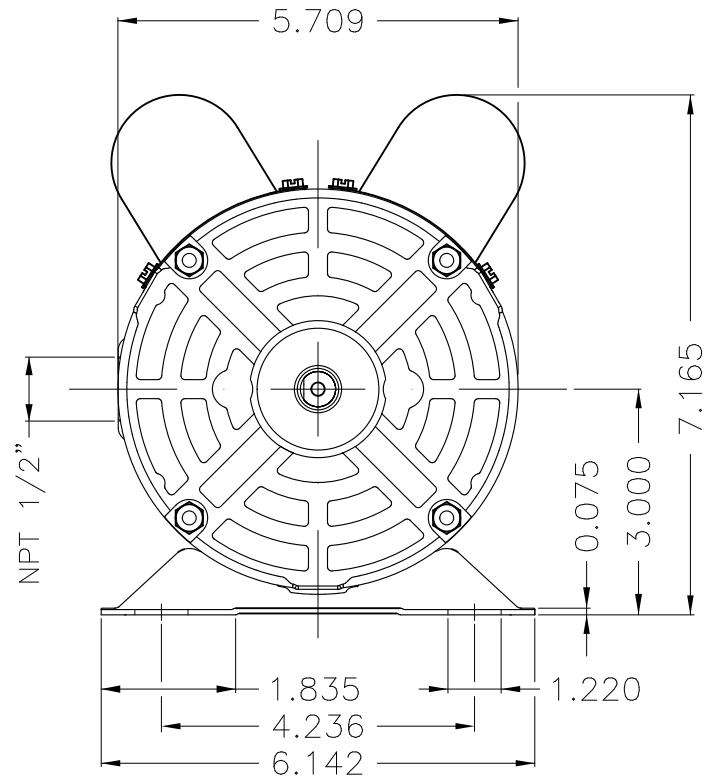
Moment of inertia (J) : 0.0358 sq.ft.lb  
Duty cycle : Cont.(S1)  
Insulation class : F  
Service factor :  
Temperature rise : 80 K  
Design : N

Rev.	Changes Summary	Performed	Checked	Date
Performed by			Page 2 / 2	Revision
Checked by				
Date	30/11/2020			

No reproduction of this drawing is allowed without written permission of WEG Motores

EIXO  
 PADRÃO  
 OPCIONAL  
 ESPECIAL  
 Dimensões em polegada  
 Dimensions in inches

THIS IS AN UPDATED REVISION, THE PREVIOUS ONE MUST BE DISREGARDED.



Mounting F-1/B3R(D)

ECM	LOC	SUMMARY OF MODIFICATIONS	EXECUTED	CHECKED	RELEASED	DATE	VER
EXECUTED	USERADMIN	 SINGLE P. MOTOR OPEN ROLLED STEEL PREM EFF FRAME 48 ODP WEG code: 13195118					
CHECKED							
RELEASED							
REL DT	30.11.2020	WMO Jaragua do Sul	Product Engineering	SHEET	1 / 1		

0.25 HP 04 Poles 60Hz

A



ZME A3