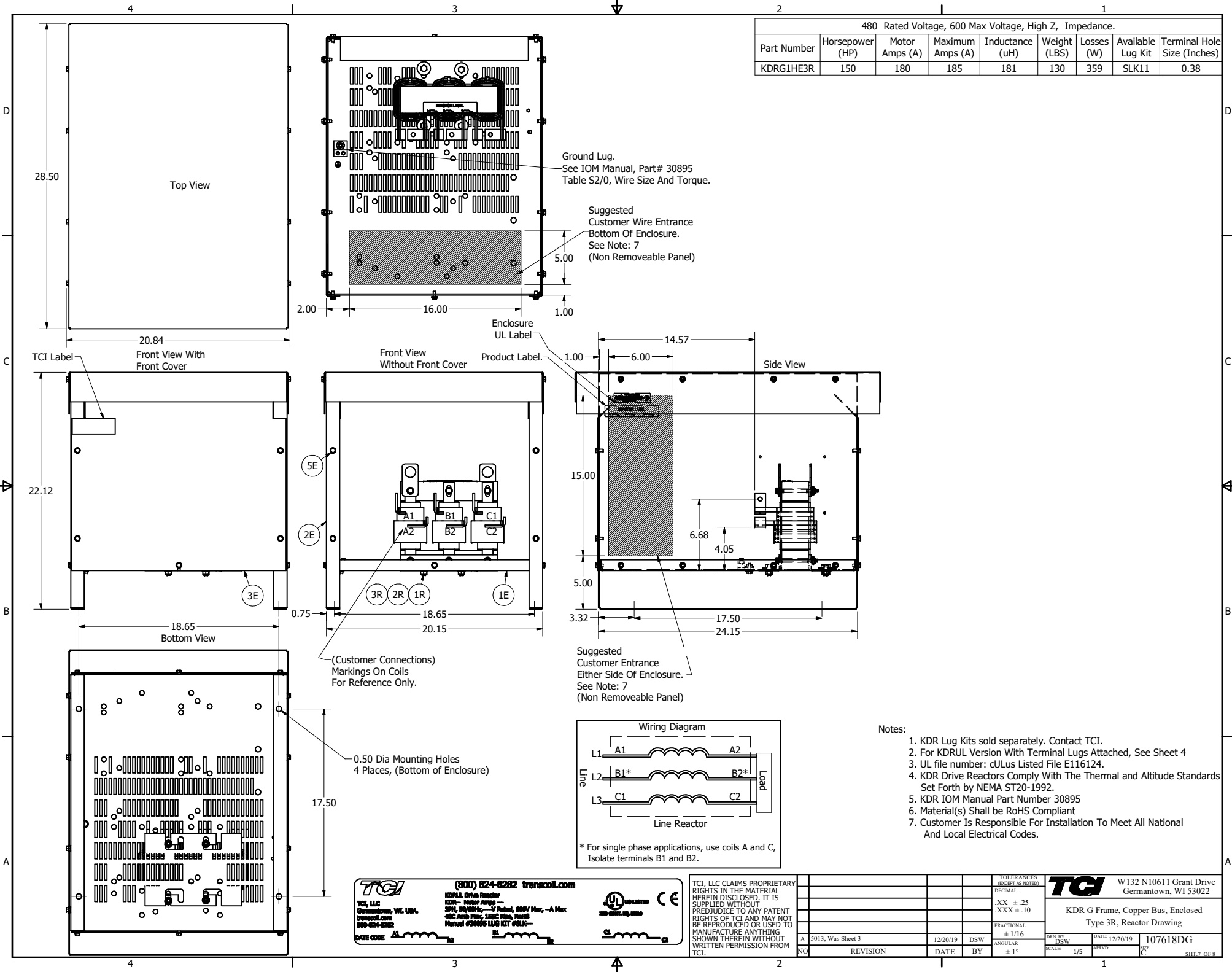


480 Rated Voltage, 600 Max Voltage, High Z, Impedance.								
Part Number	Horsepower (HP)	Motor Amps (A)	Maximum Amps (A)	Inductance (uH)	Weight (LBS)	Losses (W)	Available Lug Kit	Terminal Hole Size (Inches)
KDRG1HE3R	150	180	185	181	130	359	SLK11	0.38



Ground Lug.
See IOM Manual, Part# 30895
Table S2/0, Wire Size And Torque.

Suggested
Customer Wire Entrance
Bottom Of Enclosure.
See Note: 7
(Non Removeable Panel)

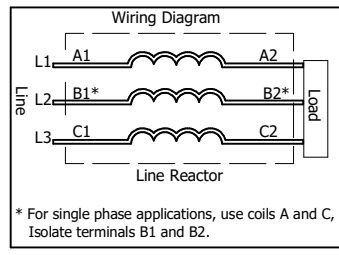
Enclosure
UL Label

Product Label.

Suggested
Customer Entrance
Either Side Of Enclosure.
See Note: 7
(Non Removeable Panel)

(Customer Connections)
Markings On Coils
For Reference Only.

0.50 Dia Mounting Holes
4 Places, (Bottom of Enclosure)



- Notes:
1. KDR Lug Kits sold separately. Contact TCI.
 2. For KDRUL Version With Terminal Lugs Attached, See Sheet 4
 3. UL file number: cULus Listed File E116124.
 4. KDR Drive Reactors Comply With The Thermal and Altitude Standards Set Forth by NEMA ST20-1992.
 5. KDR IOM Manual Part Number 30895
 6. Material(s) Shall be RoHS Compliant
 7. Customer Is Responsible For Installation To Meet All National And Local Electrical Codes.

TCI (800) 824-6282 transcoll.com

TCI, LLC
Germantown, WI, USA
transcoll.com
920-824-6282

KDRUL Drive Reactor
KDR - Motor Amps ---
300, 300/300, -17 Rated, 600V Max, -A Max
480 Amp Max, 250C Rise, 60/10
Manual #30895 LUG KIT #SLK11

UL LISTED CE

DATE CODE: A1 B1 C1

TCI, LLC CLAIMS PROPRIETARY RIGHTS IN THE MATERIAL HEREIN DISCLOSED. IT IS SUPPLIED WITHOUT PREJUDICE TO ANY PATENT RIGHTS OF TCI AND MAY NOT BE REPRODUCED OR USED TO MANUFACTURE ANYTHING SHOWN THEREIN WITHOUT WRITTEN PERMISSION FROM TCI.

TOLERANCES (EXCEPT AS NOTED)				TCI W132 N10611 Grant Drive Germantown, WI 53022			
DECIMAL				KDR G Frame, Copper Bus, Enclosed Type 3R, Reactor Drawing			
.XX ± .25				DRN BY DSW DATE 12/20/19			
.XXX ± .10				SCALE: 1/5			
FRACTIONAL				107618DG			
± 1/16				REV: 01			
ANGULAR				SHT 7 OF 8			
± 1°							
A	5013, Was Sheet 3	12/20/19	DSW				
NO	REVISION	DATE	BY				