

## NBGLC11.1

- Stainless steel enclosure
- for application in food producing machinery
- Protection class IP69K
- Variable sizes with up to five holes for command devices
- No additional mounting accessories such as spacers required thanks to flange seal under the enclosure

## Data

### Ordering data

Product type description	NBGLC11.1
Article number (order number)	103025900
EAN (European Article Number)	4030661525839
eCl@ss number, version 12.0	27-37-12-05
eCl@ss number, version 11.0	27-37-12-05
eCl@ss number, version 9.0	27-37-12-05
ETIM number, version 7.0	EC000200
ETIM number, version 6.0	EC000200

### General data

Enclosure material	Stainless steel
Colour of the bottom part of the enclosure	Silver
Colour of the sealing	Blue
Gross weight	786 g

## General data - Features

Number of cable glands	1
Number of command positions	1

## Mechanical data - Connection technique

Diameter of the cable gland	20.3 mm
-----------------------------	---------

## Mechanical data - Dimensions

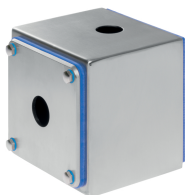
Width	100 mm
Height	94 mm
Depth	100 mm

## Ambient conditions

Degree of protection	IP67 IP69K
Ambient temperature, minimum	-25 °C
Ambient temperature, maximum	+80 °C

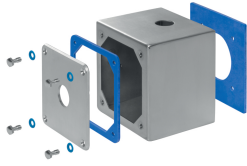
## Pictures

### Product picture (catalogue individual photo)



ID: knbglf01  
| 15.9 kB | .png | 74.083 x 53.622 mm - 210 x 152 px - 72 dpi  
| 169.5 kB | .jpg | 352.778 x 256.117 mm - 1000 x 726 px - 72 dpi

### Product picture (catalogue individual photo)

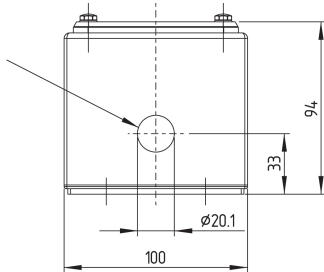


ID: knbg1f02

| 18.7 kB | .png | 74.083 x 43.744 mm - 210 x 124 px - 72 dpi

| 137.9 kB | .jpg | 352.778 x 208.139 mm - 1000 x 590 px - 72 dpi

## Dimensional drawing basic component

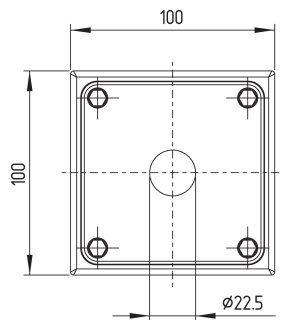


ID: knbg3g03

| 2.9 kB | .png | 74.083 x 62.442 mm - 210 x 177 px - 72 dpi

| 86.4 kB | .jpg | 352.778 x 297.039 mm - 1000 x 842 px - 72 dpi

## Dimensional drawing basic component



ID: knbg3g02

| 3.8 kB | .png | 73.731 x 83.256 mm - 209 x 236 px - 72 dpi

| 133.2 kB | .jpg | 352.425 x 397.228 mm - 999 x 1126 px - 72 dpi

Schmersal, Inc., 15 Skyline Drive, Hawthorne, NY 10532

The details and data referred to have been carefully checked. Images may diverge from original. Further technical data can be found in the manual. Technical amendments and errors possible.

Generated on: 10/11/2022, 5:03 PM