



MR 330-11Y-M20

- Actuator head can be repositioned in steps 4 x 90°
- Metal enclosure
- Long life
- 40 mm x 76 mm x 40 mm (basic component)
- Suitable for low actuating speeds
- 1 Cable entry M 20 x 1.5
- free of silicon
- proved in power station applications

Data

Ordering data

Product type description	MR 330-11Y-M20
Article number (order number)	131165677
EAN (European Article Number)	8905236107092
eCl@ss number, version 12.0	27-27-06-01
eCl@ss number, version 11.0	27-27-06-01
eCl@ss number, version 9.0	27-27-06-01
ETIM number, version 7.0	EC000030
ETIM number, version 6.0	EC000030

General data

Standards	EN IEC 60947-5-1
Working principle	mechanical
Enclosure material	Light-alloy diecast, paint finish

Enclosure coating material	painted
Material of the contacts, electrical	Silver
Gross weight	214 g

Safety classification - Safety outputs

B_{10D} Normally-closed contact 20,000,000 Operations
(NC)

Mechanical data

Actuating element	Roller plunger
Roller material	Plastic
Actuating force, minimum	17.5 N
Actuating speed, minimum	1 mm/min

Mechanical data - Dimensions

Length of sensor	40 mm
Width of sensor	40 mm
Height of sensor	116.5 mm
Width of Castor	4.6 mm
Diameter of Castor	17.2 mm

Ambient conditions

Degree of protection	IP65
Ambient temperature, minimum	-30 °C
Ambient temperature, maximum	+90 °C
Restistance to shock	50 g / 6 ms

Ambient conditions - Insulation values

Rated impulse withstand voltage U_{imp} 4 kV

Electrical data

Thermal test current 6 A

Note

Note (General) Actuation from the side of the plunger should be avoided, since this reduces the mechanical life of the position switch.

Ordering code

Product type description:
MR 330-11Y-M20/RMS-(1)

(1)

without

1366

Included in standard version

temperature-resistant variant up to +160 °C incl. 10°
toothing for swivel levers

Pictures

Product picture (catalogue individual photo)

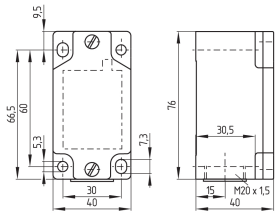


ID: km330f02

| 407.0 kB | .jpg | 152.047 x 347.133 mm - 431 x 984 px - 72 dpi

| 124.0 kB | .png | 74.083 x 168.981 mm - 210 x 479 px - 72 dpi

Dimensional drawing basic component



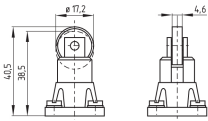
ID: 1m330g01

| 24.6 kB | .cdr |

| 4.0 kB | .png | 74.083 x 51.858 mm - 210 x 147 px - 72 dpi

| 107.3 kB | .jpg | 352.778 x 247.297 mm - 1000 x 701 px - 72 dpi

Dimensional drawing actuator



ID: 1m330b02

| 3.2 kB | .png | 74.083 x 51.858 mm - 210 x 147 px - 72 dpi

| 60.8 kB | .jpg | 352.778 x 247.297 mm - 1000 x 701 px - 72 dpi

Operating principle



ID: 235rz01

| 15.2 kB | .cdr |

| 149.7 kB | .jpg | 352.778 x 799.394 mm - 1000 x 2266 px - 72 dpi

| 2.9 kB | .png | 74.083 x 167.922 mm - 210 x 476 px - 72 dpi

Schmersal, Inc., 15 Skyline Drive, Hawthorne, NY 10532

The details and data referred to have been carefully checked. Images may diverge from original. Further technical data can be found in the manual. Technical amendments and errors possible.

Generated on: 10/18/2022, 4:11 PM