



**EN** Operating instructions. . . . . page 1  
Original

**General information**

**Purpose**

The position switches are suitable for sliding and hinged guards, which need to be closed in order to ensure the required operational safety. Belt alignment switches M 330-...-1348 are suitable for use on material handling equipment. The switch is actuated, when the conveyor belt becomes misaligned.



The user must observe the country-specific installation standards as well as all prevailing safety regulations and accident prevention rules.

**Technical data**

Standards:	IEC 60947-5-1
Design according to ISO 14119:	1
B <sub>10D</sub> NC contact to ISO 13849-1:	20,000,000
Enclosure:	light-alloy diecast, paint finish
Protection class:	IP65 to IEC 60529
Protection class:	I
Degree of pollution:	3
Ambient temperature:	-30 °C ... +90 °C
Connection:	screw terminals
Cable section:	max. 2.5 mm <sup>2</sup> (incl. conductor ferrules)
Tightening torque:	
- Terminals:	1.5 Nm
- Fixing screws:	1.2 Nm
- Cover screws:	0.7 Nm
- Screws of the actuating head:	0.45 Nm
Mechanical life:	> 30 million operations
Switching frequency:	5000 / h
Utilisation category AC-15 I <sub>e</sub> /U <sub>e</sub> :	2.5 A / 230 VAC
Rated impulse withstand voltage U <sub>imp</sub> :	4 kV
Rated insulation voltage U <sub>i</sub> :	250 V
Thermal test current I <sub>the</sub> :	6 A
Max. fuse rating:	6 A gG D-fuse
Required short-circuit current:	1000 A



Provisions for a suitable conduit adapter to one of the applicable wiring systems in accordance with the National Electrical Code, ANSI/NFPA 70-2002 are available from the manufacturer. Refer to manufacturers information. Openings shall be closed by equipment rated for enclosure Types: 3, 3R, 3RX, 3S, 3SX, 3X, 5, 4, 4X, 6, 6P, 12 or 13. Tightening torque Field Wiring Terminals: 1.5 Nm



Further information along with the latest applicable declaration of conformity can be found in the Schmersal catalogues or in the online catalogue on the Internet: [www.schmersal.net](http://www.schmersal.net).

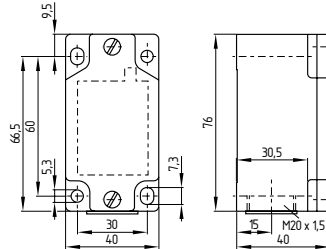


Please observe the relevant requirements of the standards ISO 12100, ISO 14119 and ISO 14120.

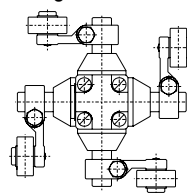
**Mounting and electrical connection**

To ensure a proper functioning, the switch must be installed so that the required switch travel is obtained. All components have sufficient after-travel to compensate for inaccuracies in the guidance of the actuating system. The switch should not be used as an end switch. Any mounting position.

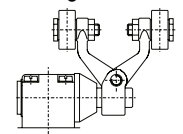
Dimensions (in mm)



Positioning actuator head



Positioning Roller Lever

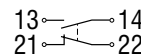


The electrical connection may only be carried out by authorised personnel in a de-energised condition.

For the cable entry, suitable cable glands with an appropriate degree of protection must be used. The contact labelling can be found in the wiring compartment of the switch. After wiring, dust and soiling must be removed from the wiring compartment. An extremely strong tightening of the cover screws can reduce the sealing efficiency and therefore must be avoided.

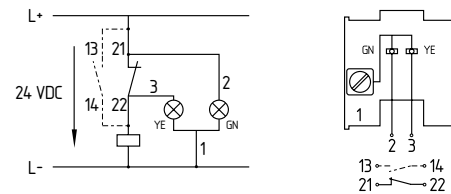
**1 NO / 1 NC**

The contacts are shown in a non-actuated condition.



**LED version**

- Ordering suffix G24, protected against incorrect polarity and voltage spikes
- Operating voltage indication: green / GN
- Switching condition indication: yellow / YE



**Disposal**

The switch must be disposed of in an appropriate manner in accordance with the national prescriptions and legislations.

**K.A. Schmersal GmbH & Co. KG**

Mödinghofe 30, D - 42279 Wuppertal  
Postfach 24 02 63, D - 42232 Wuppertal

Phone: +49 - (0)2 02 - 64 74 - 0  
Telefax: +49 - (0)2 02 - 64 74 - 1 00  
E-Mail: [info@schmersal.com](mailto:info@schmersal.com)  
Internet: <http://www.schmersal.com>

