



## ZV10H 236-11Z-M20

- Snap action with constant contact pressure up to switching point
- 1 Cable entry M 20 x 1.5
- Thermoplastic enclosure
- Good resistance to oil and petroleum spirit
- Wide range of alternative actuators
- 30 mm x 58,5 mm x 30 mm
- Double-insulated
- Mounting details to EN 50047
- Actuator heads can be repositioned by 4 x 90°
- **only for positioning tasks**
- Lever angle adjustable in 10° steps

## Data

### Ordering data

Note (Delivery capacity)	Not available!
Product type description	ZV10H 236-11Z-M20
Article number (order number)	101168178
EAN (European Article Number)	4030661221243

### Approvals - Standards

Certificates	cULus CCC
--------------	--------------

### General data

Standards	BG-GS-ET-15 EN ISO 13849-1 EN IEC 60947-5-1
Housing construction form	Norm construction design
Housing material	Plastic, glass-fibre-reinforced
Lever material	Metal film
Material of the rod	Plastic
Gross weight	95 g

### General data - Features

Number of auxiliary contacts	1
Number of safety contacts	1

### Safety classification

Standards	EN ISO 13849-1
Mission time	20 Year(s)

### Safety classification - Safety outputs

B <sub>10D</sub> Normally-closed contact (NC)	20,000,000 Operations
---	-----------------------

### Mechanical data

Actuating element	Rod lever
Mechanical life, minimum	20,000,000 Operations
Actuating speed, minimum	687 mm/min
Actuating speed, maximum	1 m/s
Note (Actuating speed)	Actuating speed with actuating angle 30° to switch axis
Actuating torque, minimum	0.2 Nm

## Mechanical data - Connection technique

Termination	Screw terminals M20 x 1.5
Cable section, minimum	0.75 mm <sup>2</sup>
Cable section, maximum	2.5 mm <sup>2</sup>
Note (Cable section)	All indications including the conductor ferrules.

## Mechanical data - Dimensions

Length x Width x Height	Height of sensor: 96.5 mm (without rod)
Length of sensor	43.5 mm
Width of sensor	30 mm

## Ambient conditions

Degree of protection	IP65 IP67
Ambient temperature	-30 ... +80 °C

## Ambient conditions - Insulation values

Rated insulation voltage $U_i$	500 V
Rated impulse withstand voltage $U_{imp}$	6 kV

## Electrical data

Thermal test current	10 A
Required rated short-circuit current	1,000 A
Utilisation category AC-15	240 VAC
Utilisation category AC-15	4 A
Utilisation category DC-13	24 VDC
Utilisation category DC-13	1 A

Switching element	NO contact, NC contact
Switching principle	Snap action
Bounce duration, maximum	3 ms
Switching frequency	5,000 /h
Switchover time, maximum	5.5 ms
Material of the contacts, electrical	Silver

## Ordering code

Product type description:

(1)(2) 2(3)6-(4)Z(5)-(6)-(7)-(8)-(9)

(1)

---

<b>Z</b>	Snap action
<b>T</b>	Slow action (not for AF/S)

(2)

---

<b>S</b>	Plunger S
<b>R</b>	Roller plunger R
<b>4S</b>	Plunger 4S
<b>4R</b>	Roller plunger 4R
<b>1R</b>	Offset roller lever 1R
<b>K</b>	Offset roller lever K
<b>3K</b>	Angle roller lever 3K
<b>4K</b>	Angle roller lever 4K
<b>K4</b>	Angle roller lever K4
<b>1H</b>	Roller lever 1H
<b>7H</b>	Roller lever 7H
<b>10H</b>	Rod lever 10H
<b>12H</b>	Roller lever 12H
<b>14H</b>	Roller lever 14H
<b>AF</b>	Spring rod lever AF

<b>RMS</b>	Brass roller
(3)	
<b>35</b>	slim design
<b>56</b>	large design
(4)	
<b>02</b>	2 NC contact
<b>11</b>	1 NO contacts/1 NC contact
<b>20</b>	2 NO contacts, (switches with 2 NO contacts are not suitable for safety applications)
(5)	
<b>H</b>	Slow action with staggered contacts
<b>UE</b>	Slow action with overlapping contacts
(6)	
<b>without</b>	Cable entry M20
<b>ID</b>	Cut clamps
<b>NPT</b>	Cable entry NPT 1/2"
<b>ST</b>	M12 connector with A-coding
<b>ST-2310</b>	M12 connector with B-coding
(7)	
<b>1297</b>	Enclosure with transverse slotted holes
(8)	
<b>2138</b>	Roller lever 7H for position switches with safety function
(9)	
<b>1637</b>	Gold-plated contacts

## Pictures

## Product picture (catalogue individual photo)

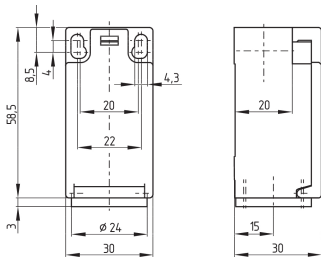


ID: k236hf03

| 983.4 kB | .jpg | 352.778 x 1275.292 mm - 1000 x 3615 px - 72 dpi

| 105.2 kB | .png | 74.083 x 267.758 mm - 210 x 759 px - 72 dpi

## Dimensional drawing basic component

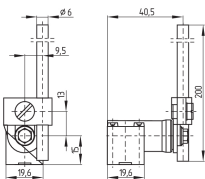


ID: 1-236g01

| 4.0 kB | .png | 74.083 x 73.378 mm - 210 x 208 px - 72 dpi

| 115.0 kB | .jpg | 352.778 x 349.956 mm - 1000 x 992 px - 72 dpi

## Dimensional drawing actuator



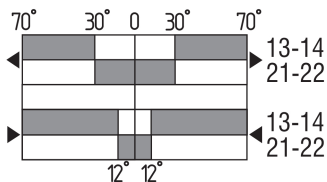
ID: 1h236g03

| 72.1 kB | .cdr |

| 3.9 kB | .png | 74.083 x 51.506 mm - 210 x 146 px - 72 dpi

| 83.4 kB | .jpg | 352.778 x 245.886 mm - 1000 x 697 px - 72 dpi

## Switch travel diagram



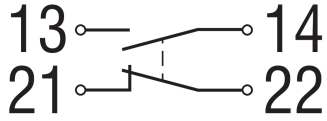
ID: kh235s14

| 20.1 kB | .cdr |

| 2.4 kB | .png | 74.083 x 40.217 mm - 210 x 114 px - 72 dpi

| 82.2 kB | .jpg | 352.778 x 191.911 mm - 1000 x 544 px - 72 dpi

## Diagram



ID: k1o1sk01

| 52.2 kB | .jpg | 352.778 x 143.581 mm - 1000 x 407 px - 72 dpi

| 2.6 kB | .png | 74.083 x 29.986 mm - 210 x 85 px - 72 dpi

Schmersal, Inc., 15 Skyline Drive, Hawthorne, NY 10532

The details and data referred to have been carefully checked. Images may diverge from original. Further technical data can be found in the manual. Technical amendments and errors possible.

Generated on: 8/21/2023, 5:13 PM