

# STAINLESS STEEL HEAVY DUTY FREE-STANDING ENCLOSURES FOR FLANGE-MOUNTED DISCONNECTS

## Application

Designed to house electrical equipment and provide degree of protection from dirt, dust, oil and water and to house most standard type disconnects. For installation information, consult our Installation Manual at [www.saginawcontrol.com](http://www.saginawcontrol.com).

## Construction

- 0.104" stainless steel Type 304.
- Seams continuously welded and ground smooth.
- Flange trough collar around all sides of door opening.
- Body stiffeners in large enclosures for extra rigidity.
- Heavy duty lifting eyes anchor into reinforced top.
- Stainless steel concealed hinges.
- Black zinc die cast coinproof/padlocking handle.
- 3-point latching mechanism.
- Black quarter turn latches as required.
- Panel supports.
- Large removable print pockets.
- Pour in place oil and water resistant gasket.
- Removable sub-panels mount on collar studs.
- Defeater on master door requires a screwdriver to open.
- Ground stud on door and body.
- Provisions for light kit.

## Finish

#4 brushed finish on all exterior surfaces. Optional sub-panels powder coated white.

Disconnect switch (or circuit breaker) and operating mechanism are not furnished with this enclosure

## IS6 Industry Standards

NEMA Type 3R, 4, 4X, 12 & Type 13  
 UL Listed Type 3R, 4, 4X & 12  
 CSA Type 3R, 4, 4X & 12  
 IEC 60529 IP66

\*\*\*To maintain Type 3R listing, Drainage is required. Install equally rated drainage device or drill a 1/8 to 1/4 inch hole in the bottom center of the enclosure, approximately 1 inch from the right, and 1 inch from the left for drainage, use listed rain-tight or wet location hubs. Drip shield over the door is recommended for all outdoor applications.

## SINGLE-DOOR ENCLOSURES

### 304 STAINLESS STEEL

Enclosure Product Code S2

Sub-Panel (P3)

Catalog No.	Height (A)	Width (B)	Depth (C)	Industry Standard	Catalog No.	Panel Height (D)	Panel Width (E)
<a href="#">SCE-72XM2818SS</a>	72.00	27.50	18.00	IS6	<a href="#">SCE-64P25**</a>	60.00	21.75
<a href="#">SCE-72XM3418SS</a>	72.00	33.50	18.00	IS6	<a href="#">SCE-64P31**</a>	60.00	27.75
<a href="#">SCE-72XM4018SS</a>	72.00	39.50	18.00	IS6	<a href="#">SCE-64P37**</a>	60.00	33.75
<a href="#">SCE-84XM4018SS</a>	84.00	39.50	18.00	IS6	<a href="#">SCE-76P37**</a>	72.00	33.75
<a href="#">SCE-84XM4024SS</a>	84.00	39.50	24.00	IS6	<a href="#">SCE-76P37**</a>	72.00	33.75
<a href="#">SCE-90XM4018SS</a>	90.00	39.50	18.00	IS6	<a href="#">SCE-82P37**</a>	78.00	33.75
<a href="#">SCE-90XM4020SS</a>	90.00	39.50	20.00	IS6	<a href="#">SCE-82P37**</a>	78.00	33.75
<a href="#">SCE-90XM4024SS</a>	90.00	39.50	24.00	IS6	<a href="#">SCE-82P37**</a>	78.00	33.75

### 316 STAINLESS STEEL

Enclosure Product Code S2

Sub-Panel (P3)

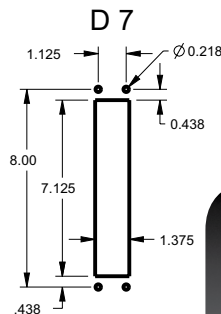
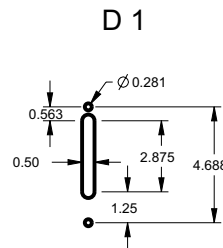
Catalog No.	Height (A)	Width (B)	Depth (C)	Industry Standard	Catalog No.	Panel Height (D)	Panel Width (E)
<a href="#">SCE-72XM2818SS6</a>	72.00	27.50	18.00	IS6	<a href="#">SCE-64P25**</a>	60.00	21.75
<a href="#">SCE-72XM3418SS6</a>	72.00	33.50	18.00	IS6	<a href="#">SCE-64P31**</a>	60.00	27.75
<a href="#">SCE-72XM4018SS6</a>	72.00	39.50	18.00	IS6	<a href="#">SCE-64P37**</a>	60.00	33.75
<a href="#">SCE-84XM4018SS6</a>	84.00	39.50	18.00	IS6	<a href="#">SCE-76P37**</a>	72.00	33.75
<a href="#">SCE-84XM4024SS6</a>	84.00	39.50	24.00	IS6	<a href="#">SCE-76P37**</a>	72.00	33.75
<a href="#">SCE-90XM4018SS6</a>	90.00	39.50	18.00	IS6	<a href="#">SCE-82P37**</a>	78.00	33.75
<a href="#">SCE-90XM4020SS6</a>	90.00	39.50	20.00	IS6	<a href="#">SCE-82P37**</a>	78.00	33.75
<a href="#">SCE-90XM4024SS6</a>	90.00	39.50	24.00	IS6	<a href="#">SCE-82P37**</a>	78.00	33.75

## XM ENCLOSURES

\* Add the letter U to the end of the part number for enclosures with a universal disconnect cutout.

Standard Disconnect cutout provided

Universal Disconnect cutout



# STAINLESS STEEL HEAVY DUTY FREE-STANDING ENCLOSURES FOR FLANGE-MOUNTED DISCONNECTS

## TWO-DOOR ENCLOSURES

### 304 STAINLESS STEEL

Enclosure Product Code S2

Sub-Panel (P3)

Catalog No.	Height (A)	Width (B)	Depth (C)	Industry Standard	Catalog No.	Panel Height (D)	Panel Width (E)
<a href="#">SCE-72XM5418SS</a>	72.00	53.75	18.00	IS6	<a href="#">SCE-64P52**</a>	60.00	48.00
<a href="#">SCE-72XM6618SS</a>	72.00	65.75	18.00	IS6	<a href="#">SCE-64P64**</a>	60.00	60.00
<a href="#">SCE-72XM7818SS</a>	72.00	77.75	18.00	IS6	<a href="#">SCE-64P76**</a>	60.00	72.00
<a href="#">SCE-72XM7824SS</a>	72.00	77.75	24.00	IS6	<a href="#">SCE-64P76**</a>	60.00	72.00
<a href="#">SCE-84XM7818SS</a>	84.00	77.75	18.00	IS6	<a href="#">SCE-76P76**</a>	72.00	72.00
<a href="#">SCE-84XM7824SS</a>	84.00	77.75	24.00	IS6	<a href="#">SCE-76P76**</a>	72.00	72.00
<a href="#">SCE-90XM7818SS</a>	90.00	77.75	18.00	IS6	<a href="#">SCE-82P76**</a>	78.00	72.00
<a href="#">SCE-90XM7824SS</a>	90.00	77.75	24.00	IS6	<a href="#">SCE-82P76**</a>	78.00	72.00

### 316 STAINLESS STEEL

Enclosure Product Code S2

Sub-Panel (P3)

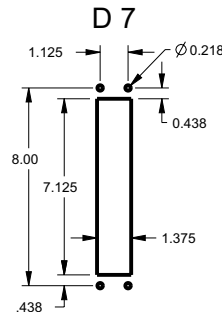
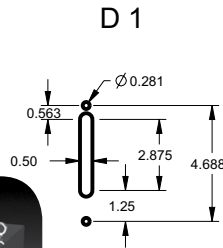
Catalog No.	Height (A)	Width (B)	Depth (C)	Industry Standard	Catalog No.	Panel Height (D)	Panel Width (E)
<a href="#">SCE-72XM5418SS6</a>	72.00	53.75	18.00	IS6	<a href="#">SCE-64P52**</a>	60.00	48.00
<a href="#">SCE-72XM6618SS6</a>	72.00	65.75	18.00	IS6	<a href="#">SCE-64P64**</a>	60.00	60.00
<a href="#">SCE-72XM7818SS6</a>	72.00	77.75	18.00	IS6	<a href="#">SCE-64P76**</a>	60.00	72.00
<a href="#">SCE-72XM7824SS6</a>	72.00	77.75	24.00	IS6	<a href="#">SCE-64P76**</a>	60.00	72.00
<a href="#">SCE-84XM7818SS6</a>	84.00	77.75	18.00	IS6	<a href="#">SCE-76P76**</a>	72.00	72.00
<a href="#">SCE-84XM7824SS6</a>	84.00	77.75	24.00	IS6	<a href="#">SCE-76P76**</a>	72.00	72.00
<a href="#">SCE-90XM7818SS6</a>	90.00	77.75	18.00	IS6	<a href="#">SCE-82P76**</a>	78.00	72.00
<a href="#">SCE-90XM7824SS6</a>	90.00	77.75	24.00	IS6	<a href="#">SCE-82P76**</a>	78.00	72.00

#### XM ENCLOSURES

\* Add the letter U to the end of the part number for enclosures with a universal disconnect cutout.

Standard Disconnect cutout provided

Universal Disconnect cutout



\*\*Sub-panel included with enclosure. Replacement sub-panels can be ordered.

# STAINLESS STEEL HEAVY DUTY FREE-STANDING ENCLOSURES FOR FLANGE-MOUNTED DISCONNECTS

## Application

Designed to house electrical equipment and provide degree of protection from dirt, dust, oil and water and to house most standard type disconnects. For installation information, consult our Installation Manual at [www.saginawcontrol.com](http://www.saginawcontrol.com).

## Construction

- 0.104" stainless steel Type 304.
- Seams continuously welded and ground smooth.
- Flange trough collar around all sides of door opening.
- Body stiffeners in large enclosures for extra rigidity.
- Heavy duty lifting eyes anchor into reinforced top.
- Stainless steel concealed hinges.
- Black zinc die cast coinproof/padlocking handle.
- 3-point latching mechanism.
- Black quarter turn latches as required.
- Panel supports.
- Large removable print pockets.
- Pour in place oil and water resistant gasket.
- Removable sub-panels mount on collar studs.
- Defeater on master door requires a screwdriver to open.
- Ground stud on door and body.
- Provisions for light kit.

## Finish

#4 brushed finish on all exterior surfaces. Optional sub-panels powder coated white.

Disconnect switch (or circuit breaker) and operating mechanism are not furnished with this enclosure

## IS6 Industry Standards

NEMA Type 3R, 4, 4X, 12 & Type 13  
UL Listed Type 3R, 4, 4X & 12  
CSA Type 3R, 4, 4X & 12  
IEC 60529 IP66

\*\*\*To maintain Type 3R listing, Drainage is required. Install equally rated drainage device or drill a 1/8 to 1/4 inch hole in the bottom center of the enclosure, approximately 1 inch from the right, and 1 inch from the left for drainage, use listed rain-tight or wet location hubs. Drip shield over the door is recommended for all outdoor applications.



## THREE-DOOR ENCLOSURES 304 STAINLESS STEEL

Enclosure Product Code S2					Sub-Panel (P3)		
Catalog No.	Height (A)	Width (B)	Depth (C)	Industry Standard	Catalog No.	Panel Height (D)	Panel Width (E)
<a href="#">SCE-72XM3EQ18SS</a>	72.00	99.50	18.00	IS6	<a href="#">SCE-64P31**</a>	60.00	27.75
					<a href="#">SCE-64P64**</a>	60.00	60.00
<a href="#">SCE-72XM3EW18SS</a>	72.00	117.50	18.00	IS6	<a href="#">SCE-64P37**</a>	60.00	33.75
					<a href="#">SCE-64P76**</a>	60.00	72.00
<a href="#">SCE-84XM3EW18SS</a>	84.00	117.50	18.00	IS6	<a href="#">SCE-76P37**</a>	72.00	33.75
					<a href="#">SCE-76P76**</a>	72.00	72.00
<a href="#">SCE-84XM3EW24SS</a>	84.00	117.50	24.00	IS6	<a href="#">SCE-76P37**</a>	72.00	33.75
					<a href="#">SCE-76P76**</a>	72.00	72.00
<a href="#">SCE-90XM3EW24SS</a>	90.00	117.50	24.00	IS6	<a href="#">SCE-82P37**</a>	78.00	33.75
					<a href="#">SCE-82P76**</a>	78.00	72.00

## 316 STAINLESS STEEL

Enclosure Product Code S2					Sub-Panel (P3)		
Catalog No.	Height (A)	Width (B)	Depth (C)	Industry Standard	Catalog No.	Panel Height (D)	Panel Width (E)
<a href="#">SCE-72XM3EQ18SS6</a>	72.00	99.50	18.00	IS6	<a href="#">SCE-64P31**</a>	60.00	27.75
					<a href="#">SCE-64P64**</a>	60.00	60.00
<a href="#">SCE-72XM3EW18SS6</a>	72.00	117.50	18.00	IS6	<a href="#">SCE-64P37**</a>	60.00	33.75
					<a href="#">SCE-64P76**</a>	60.00	72.00
<a href="#">SCE-84XM3EW18SS6</a>	84.00	117.50	18.00	IS6	<a href="#">SCE-76P37**</a>	72.00	33.75
					<a href="#">SCE-76P76**</a>	72.00	72.00
<a href="#">SCE-84XM3EW24SS6</a>	84.00	117.50	24.00	IS6	<a href="#">SCE-76P37**</a>	72.00	33.75
					<a href="#">SCE-76P76**</a>	72.00	72.00
<a href="#">SCE-90XM3EW24SS6</a>	90.00	117.50	24.00	IS6	<a href="#">SCE-82P37**</a>	78.00	33.75
					<a href="#">SCE-82P76**</a>	78.00	72.00

## FOUR-DOOR ENCLOSURES 304 STAINLESS STEEL

Enclosure Product Code S2					Sub-Panel (P3)		
Catalog No.	Height (A)	Width (B)	Depth (C)	Industry Standard	Catalog No.	Panel Height (D)	Panel Width (E)
<a href="#">SCE-84XM4EW18SS</a>	84.00	157.50	18.00	IS6	<a href="#">SCE-76P76** (2)</a>	72.00	72.00
<a href="#">SCE-84XM4EW24SS</a>	84.00	157.50	24.00	IS6	<a href="#">SCE-76P76** (2)</a>	72.00	72.00
<a href="#">SCE-90XM4EW18SS</a>	90.00	157.50	18.00	IS6	<a href="#">SCE-82P76** (2)</a>	78.00	72.00
<a href="#">SCE-90XM4EW24SS</a>	90.00	157.50	24.00	IS6	<a href="#">SCE-82P76** (2)</a>	78.00	72.00

## 316 STAINLESS STEEL

Enclosure Product Code S2					Sub-Panel (P3)		
Catalog No.	Height (A)	Width (B)	Depth (C)	Industry Standard	Catalog No.	Panel Height (D)	Panel Width (E)
<a href="#">SCE-84XM4EW18SS6</a>	84.00	157.50	18.00	IS6	<a href="#">SCE-76P76** (2)</a>	72.00	72.00
<a href="#">SCE-84XM4EW24SS6</a>	84.00	157.50	24.00	IS6	<a href="#">SCE-76P76** (2)</a>	72.00	72.00
<a href="#">SCE-90XM4EW18SS6</a>	90.00	157.50	18.00	IS6	<a href="#">SCE-82P76** (2)</a>	78.00	72.00
<a href="#">SCE-90XM4EW24SS6</a>	90.00	157.50	24.00	IS6	<a href="#">SCE-82P76** (2)</a>	78.00	72.00

\*\*Sub-panel included with enclosure. Replacement sub-panels can be ordered.

# STAINLESS STEEL HEAVY DUTY FREE-STANDING ENCLOSURES FOR FLANGE-MOUNTED DISCONNECTS

## FIVE-DOOR ENCLOSURES 304 STAINLESS STEEL

Enclosure Product Code S2					Sub-Panel (P3)		
Catalog No.	Height (A)	Width (B)	Depth (C)	Industry Standard	Catalog No.	Panel Height (D)	Panel Width (E)
<a href="#">SCE-84XM5EW18SS</a>	84.00	196.75	18.00	IS6	<a href="#">SCE-76P37**</a> (2)	72.00	33.75
					<a href="#">SCE-76P76**</a>	72.00	72.00
<a href="#">SCE-84XM5EW24SS</a>	84.00	196.75	24.00	IS6	<a href="#">SCE-76P37**</a> (2)	72.00	33.75
					<a href="#">SCE-76P76**</a>	72.00	72.00
<a href="#">SCE-90XM5EW18SS</a>	90.00	196.75	18.00	IS6	<a href="#">SCE-82P37**</a> (2)	78.00	33.75
					<a href="#">SCE-82P76**</a>	78.00	72.00
<a href="#">SCE-90XM5EW24SS</a>	90.00	196.75	24.00	IS6	<a href="#">SCE-82P37**</a> (2)	78.00	33.75
					<a href="#">SCE-82P76**</a>	78.00	72.00

## 316 STAINLESS STEEL

Enclosure Product Code S2					Sub-Panel (P3)		
Catalog No.	Height (A)	Width (B)	Depth (C)	Industry Standard	Catalog No.	Panel Height (D)	Panel Width (E)
<a href="#">SCE-84XM5EW18SS6</a>	84.00	196.75	18.00	IS6	<a href="#">SCE-76P37**</a> (2)	72.00	33.75
					<a href="#">SCE-76P76**</a>	72.00	72.00
<a href="#">SCE-84XM5EW24SS6</a>	84.00	196.75	24.00	IS6	<a href="#">SCE-76P37**</a> (2)	72.00	33.75
					<a href="#">SCE-76P76**</a>	72.00	72.00
<a href="#">SCE-90XM5EW18SS6</a>	90.00	196.75	18.00	IS6	<a href="#">SCE-82P37**</a> (2)	78.00	33.75
					<a href="#">SCE-82P76**</a>	78.00	72.00
<a href="#">SCE-90XM5EW24SS6</a>	90.00	196.75	24.00	IS6	<a href="#">SCE-82P37**</a> (2)	78.00	33.75
					<a href="#">SCE-82P76**</a>	78.00	72.00

## SIX-DOOR ENCLOSURES 304 STAINLESS STEEL

Enclosure Product Code S2					Sub-Panel (P3)		
Catalog No.	Height (A)	Width (B)	Depth (C)	Industry Standard	Catalog No.	Panel Height (D)	Panel Width (E)
<a href="#">SCE-84XM6EW24SS</a>	84.00	235.00	24.00	IS6	<a href="#">SCE-76P76**</a> (3)	72.00	72.00
<a href="#">SCE-90XM6EW24SS</a>	90.00	235.00	24.00	IS6	<a href="#">SCE-82P76**</a> (3)	78.00	72.00

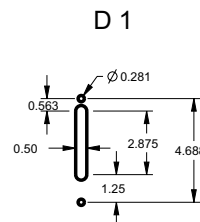
## 316 STAINLESS STEEL

Enclosure Product Code S2					Sub-Panel (P3)		
Catalog No.	Height (A)	Width (B)	Depth (C)	Industry Standard	Catalog No.	Panel Height (D)	Panel Width (E)
<a href="#">SCE-84XM6EW24SS6</a>	84.00	235.00	24.00	IS6	<a href="#">SCE-76P76**</a> (3)	72.00	72.00
<a href="#">SCE-90XM6EW24SS6</a>	90.00	235.00	24.00	IS6	<a href="#">SCE-82P76**</a> (3)	78.00	72.00

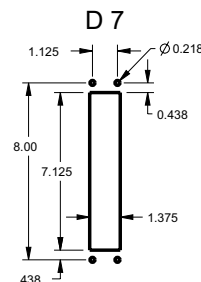
### XM ENCLOSURES

\* Add the letter U to the end of the part number for enclosures with a universal disconnect cutout.

Standard Disconnect cutout provided



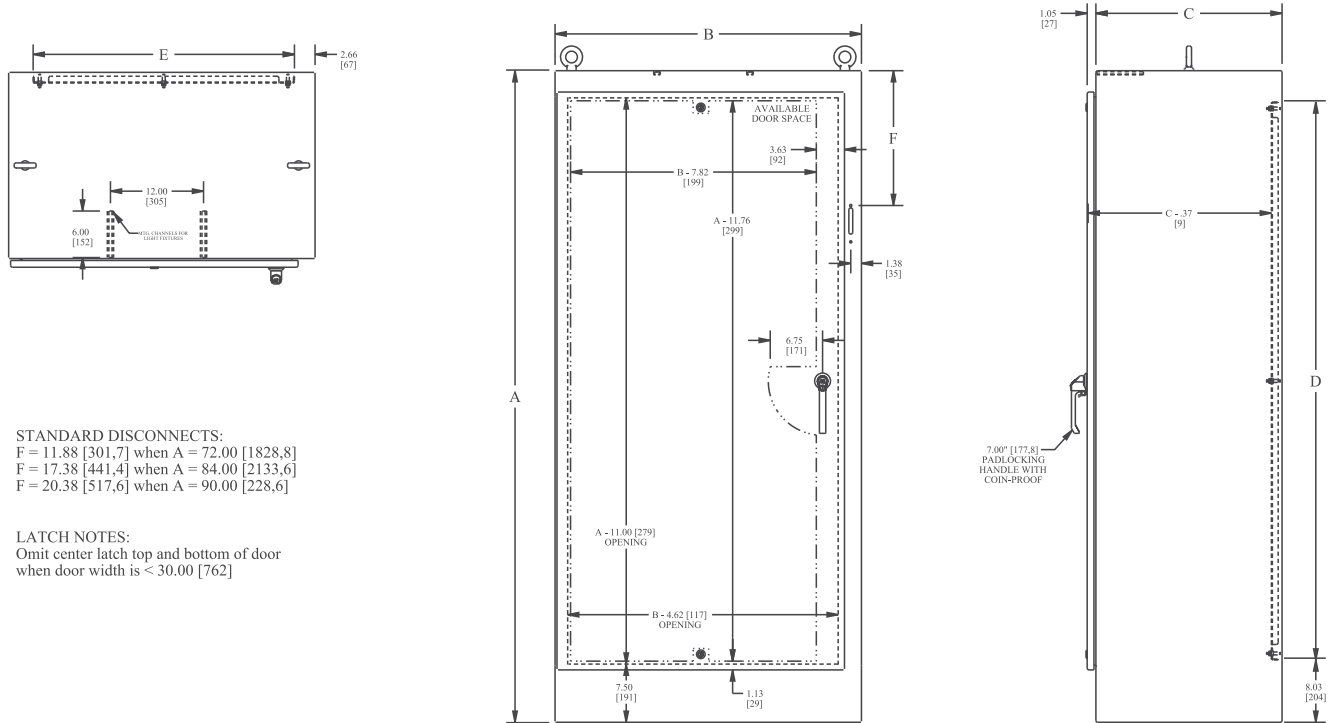
Universal Disconnect cutout



# STAINLESS STEEL HEAVY DUTY FREE-STANDING ENCLOSURES FOR FLANGE-MOUNTED DISCONNECTS

## TECHNICAL DATA

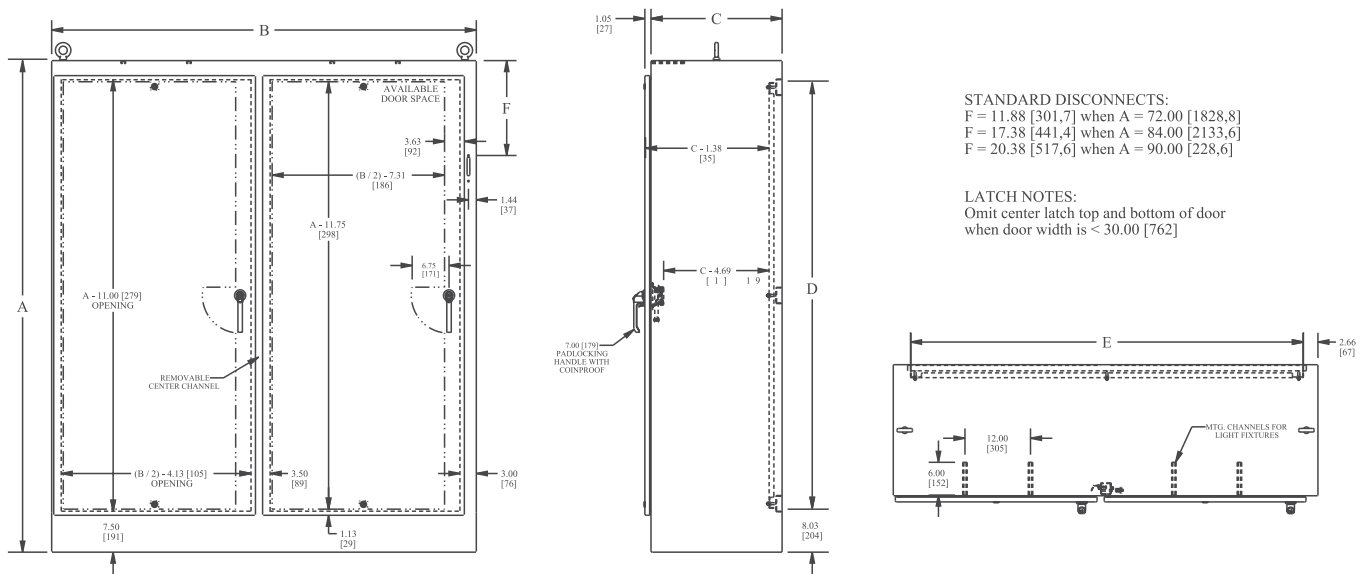
### SINGLE-DOOR ENCLOSURE



STANDARD DISCONNECTS:  
 F = 11.88 [301,7] when A = 72.00 [1828,8]  
 F = 17.38 [441,4] when A = 84.00 [2133,6]  
 F = 20.38 [517,6] when A = 90.00 [228,6]

LATCH NOTES:  
 Omit center latch top and bottom of door when door width is < 30.00 [762]

### TWO-DOOR ENCLOSURE



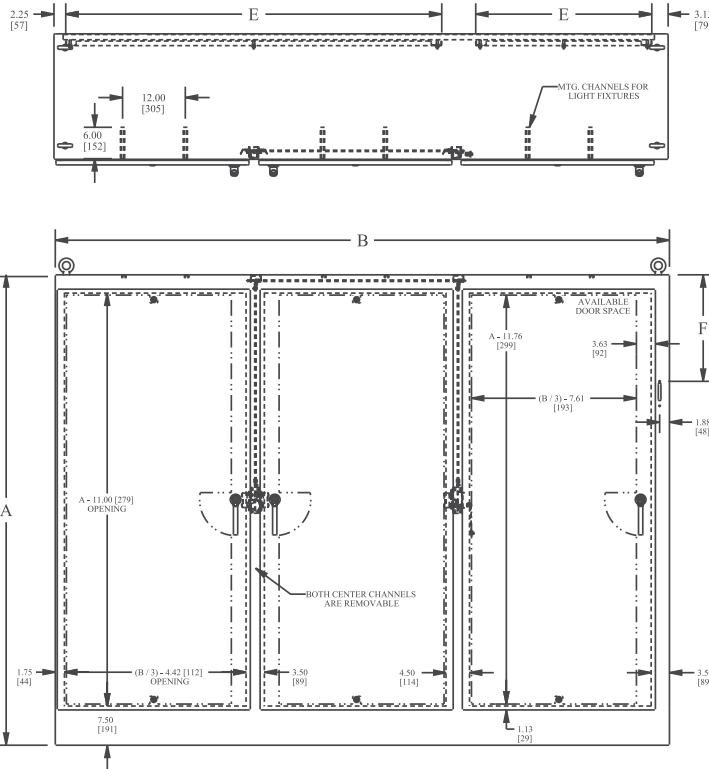
STANDARD DISCONNECTS:  
 F = 11.88 [301,7] when A = 72.00 [1828,8]  
 F = 17.38 [441,4] when A = 84.00 [2133,6]  
 F = 20.38 [517,6] when A = 90.00 [228,6]

LATCH NOTES:  
 Omit center latch top and bottom of door when door width is < 30.00 [762]

# STAINLESS STEEL HEAVY DUTY FREE-STANDING ENCLOSURES FOR FLANGE-MOUNTED DISCONNECTS

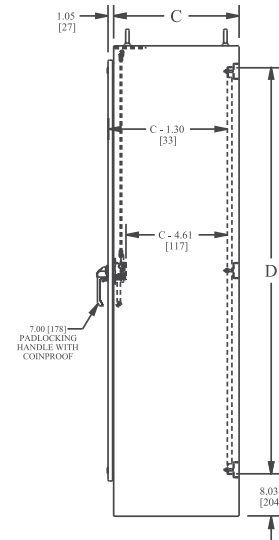
## TECHNICAL DATA

### THREE-DOOR ENCLOSURE

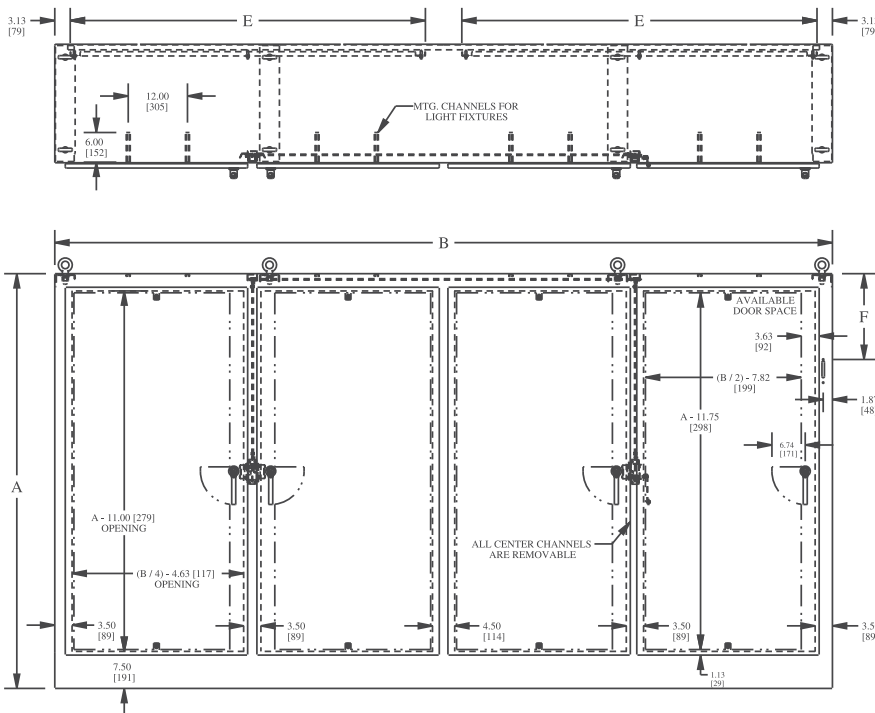


STANDARD DISCONNECTS:  
F = 11.88 [301,7] when A = 72.00 [1828,8]  
F = 17.38 [441,4] when A = 84.00 [2133,6]  
F = 20.38 [517,6] when A = 90.00 [228,6]

LATCH NOTES:  
Omit center latch top and bottom of door when door width is < 30.00 [762]

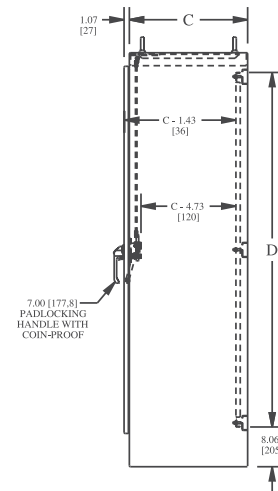


### FOUR-DOOR ENCLOSURE



STANDARD DISCONNECTS:  
F = 11.88 [301,7] when A = 72.00 [1828,8]  
F = 17.38 [441,4] when A = 84.00 [2133,6]  
F = 20.38 [517,6] when A = 90.00 [228,6]

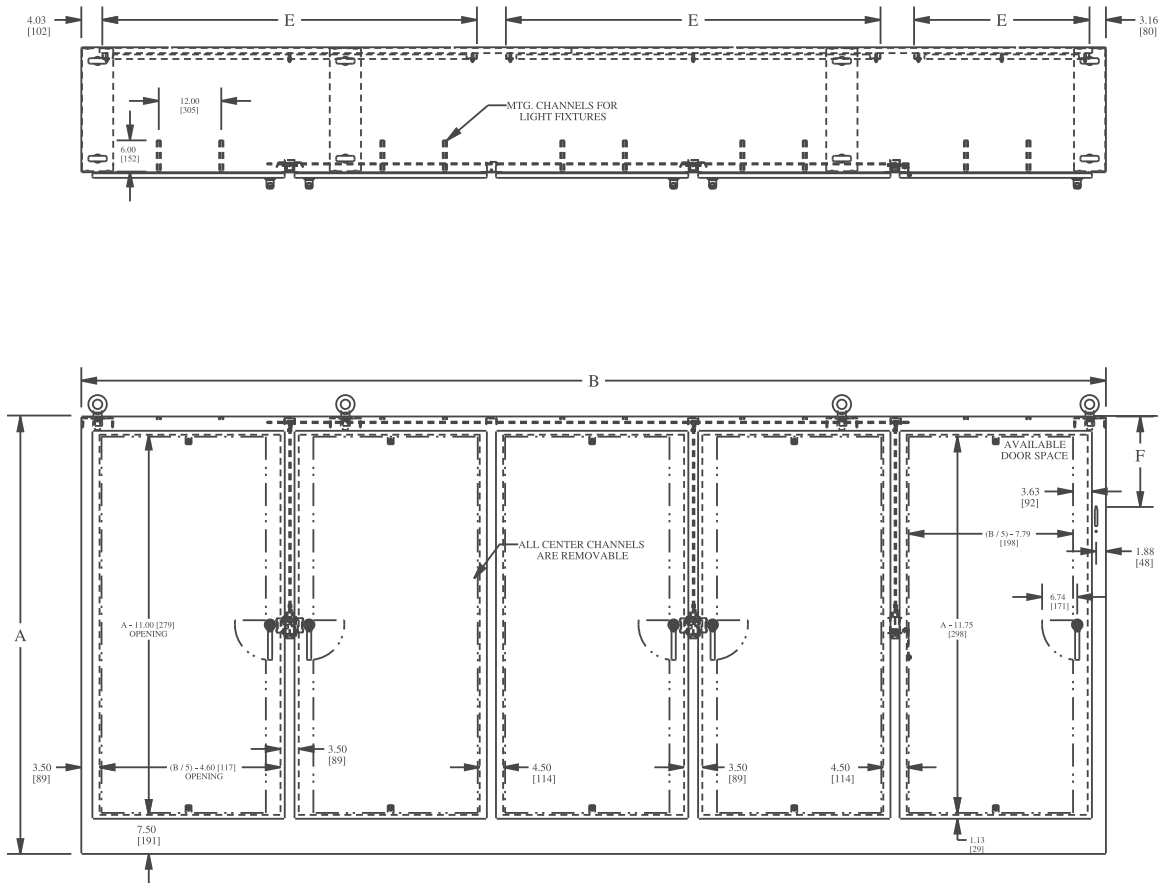
LATCH NOTES:  
Omit center latch top and bottom of door when door width is < 30.00 [762]



# STAINLESS STEEL HEAVY DUTY FREE-STANDING ENCLOSURES FOR FLANGE-MOUNTED DISCONNECTS

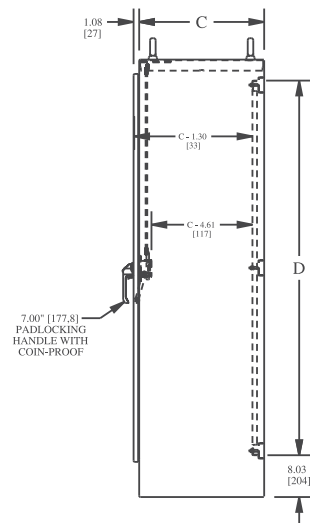
## TECHNICAL DATA

### FIVE-DOOR ENCLOSURE



STANDARD DISCONNECTS:  
 $F = 11.88$  [301,7] when  $A = 72.00$  [1828,8]  
 $F = 17.38$  [441,4] when  $A = 84.00$  [2133,6]  
 $F = 20.38$  [517,6] when  $A = 90.00$  [228,6]

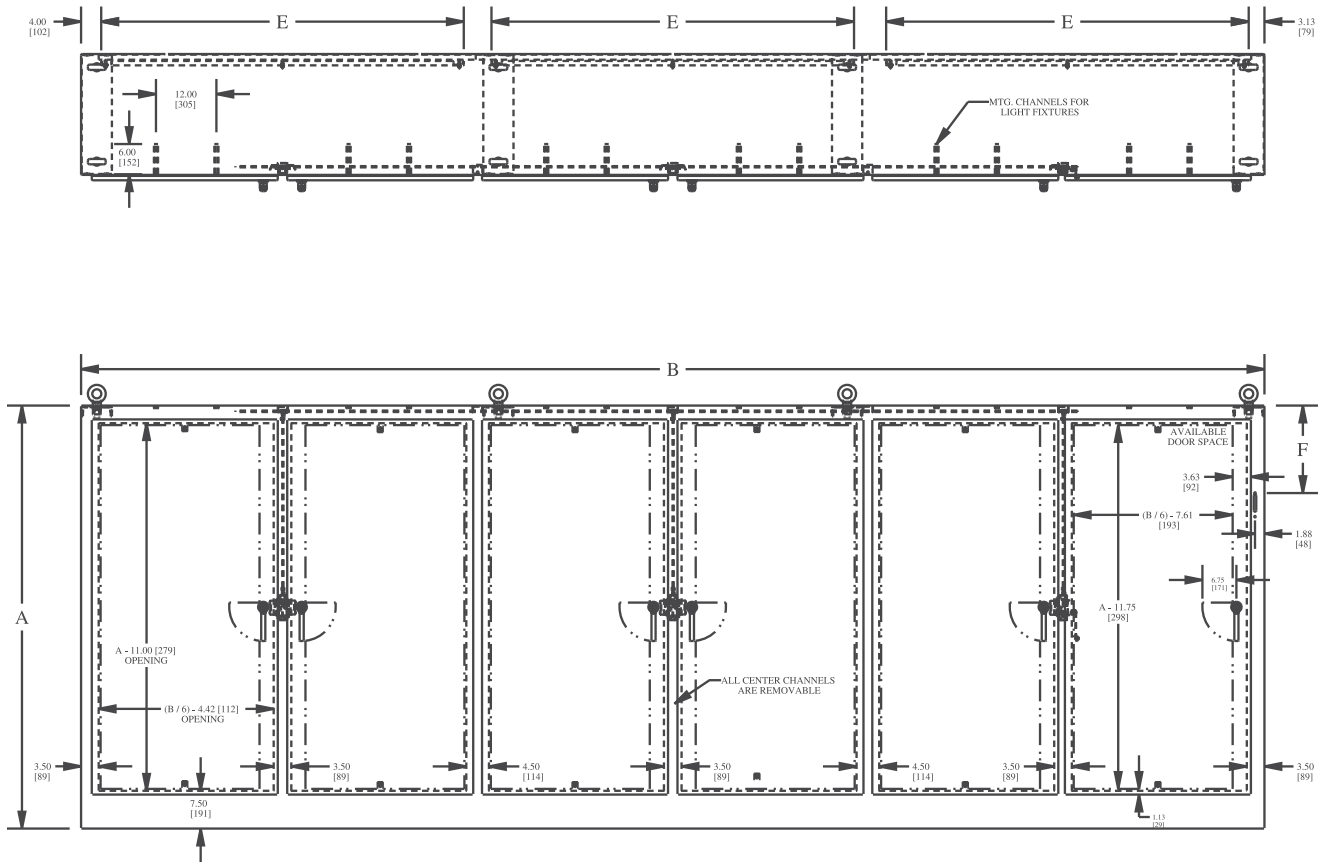
LATCH NOTES:  
 Omit center latch top and bottom of door  
 when door width is  $< 30.00$  [762]



# STAINLESS STEEL HEAVY DUTY FREE-STANDING ENCLOSURES FOR FLANGE-MOUNTED DISCONNECTS

## TECHNICAL DATA

### SIX-DOOR ENCLOSURE



STANDARD DISCONNECTS:  
 $F = 11.88$  [301,7] when  $A = 72.00$  [1828,8]  
 $F = 17.38$  [441,4] when  $A = 84.00$  [2133,6]  
 $F = 20.38$  [517,6] when  $A = 90.00$  [228,6]

LATCH NOTES:  
 Omit center latch top and bottom of door  
 when door width is  $< 30.00$  [762]

