

STAINLESS STEEL HEAVY DUTY FREE-STANDING ENCLOSURES FOR FLANGE-MOUNTED DISCONNECTS

Application

Designed to house electrical equipment and provide degree of protection from dirt, dust, oil and water and to house most standard type disconnects. For installation information, consult our Installation Manual at www.saginawcontrol.com.

Construction

- 0.104" stainless steel Type 304.
- Seams continuously welded and ground smooth.
- Flange trough collar around all sides of door opening.
- Body stiffeners in large enclosures for extra rigidity.
- Heavy duty lifting eyes anchor into reinforced top.
- Stainless steel concealed hinges.
- Black zinc die cast coinproof/padlocking handle.
- 3-point latching mechanism.
- Black quarter turn latches as required.
- Panel supports.
- Large removable print pockets.
- Pour in place oil and water resistant gasket.
- Removable sub-panels mount on collar studs.
- Defeater on master door requires a screwdriver to open.
- Ground stud on door and body.
- Provisions for light kit.

Finish

#4 brushed finish on all exterior surfaces. Optional sub-panels powder coated white.

Disconnect switch (or circuit breaker) and operating mechanism are not furnished with this enclosure

IS6 Industry Standards

NEMA Type 3R, 4, 4X, 12 & Type 13
UL Listed Type 3R, 4, 4X & 12
CSA Type 3R, 4, 4X & 12
IEC 60529 IP66

***To maintain Type 3R listing, Drainage is required. Install equally rated drainage device or drill a 1/8 to 1/4 inch hole in the bottom center of the enclosure, approximately 1 inch from the right, and 1 inch from the left for drainage, use listed rain-tight or wet location hubs. Drip shield over the door is recommended for all outdoor applications.



THREE-DOOR ENCLOSURES 304 STAINLESS STEEL

| Enclosure Product Code S2 | | | | | Sub-Panel (P3) | | |
|---------------------------------|------------|-----------|-----------|-------------------|-----------------------------|------------------|-----------------|
| Catalog No. | Height (A) | Width (B) | Depth (C) | Industry Standard | Catalog No. | Panel Height (D) | Panel Width (E) |
| SCE-72XM3EQ18SS | 72.00 | 99.50 | 18.00 | IS6 | SCE-64P31** | 60.00 | 27.75 |
| | | | | | SCE-64P64** | 60.00 | 60.00 |
| SCE-72XM3EW18SS | 72.00 | 117.50 | 18.00 | IS6 | SCE-64P37** | 60.00 | 33.75 |
| | | | | | SCE-64P76** | 60.00 | 72.00 |
| SCE-84XM3EW18SS | 84.00 | 117.50 | 18.00 | IS6 | SCE-76P37** | 72.00 | 33.75 |
| | | | | | SCE-76P76** | 72.00 | 72.00 |
| SCE-84XM3EW24SS | 84.00 | 117.50 | 24.00 | IS6 | SCE-76P37** | 72.00 | 33.75 |
| | | | | | SCE-76P76** | 72.00 | 72.00 |
| SCE-90XM3EW24SS | 90.00 | 117.50 | 24.00 | IS6 | SCE-82P37** | 78.00 | 33.75 |
| | | | | | SCE-82P76** | 78.00 | 72.00 |

316 STAINLESS STEEL

| Enclosure Product Code S2 | | | | | Sub-Panel (P3) | | |
|----------------------------------|------------|-----------|-----------|-------------------|-----------------------------|------------------|-----------------|
| Catalog No. | Height (A) | Width (B) | Depth (C) | Industry Standard | Catalog No. | Panel Height (D) | Panel Width (E) |
| SCE-72XM3EQ18SS6 | 72.00 | 99.50 | 18.00 | IS6 | SCE-64P31** | 60.00 | 27.75 |
| | | | | | SCE-64P64** | 60.00 | 60.00 |
| SCE-72XM3EW18SS6 | 72.00 | 117.50 | 18.00 | IS6 | SCE-64P37** | 60.00 | 33.75 |
| | | | | | SCE-64P76** | 60.00 | 72.00 |
| SCE-84XM3EW18SS6 | 84.00 | 117.50 | 18.00 | IS6 | SCE-76P37** | 72.00 | 33.75 |
| | | | | | SCE-76P76** | 72.00 | 72.00 |
| SCE-84XM3EW24SS6 | 84.00 | 117.50 | 24.00 | IS6 | SCE-76P37** | 72.00 | 33.75 |
| | | | | | SCE-76P76** | 72.00 | 72.00 |
| SCE-90XM3EW24SS6 | 90.00 | 117.50 | 24.00 | IS6 | SCE-82P37** | 78.00 | 33.75 |
| | | | | | SCE-82P76** | 78.00 | 72.00 |

FOUR-DOOR ENCLOSURES 304 STAINLESS STEEL

| Enclosure Product Code S2 | | | | | Sub-Panel (P3) | | |
|---------------------------------|------------|-----------|-----------|-------------------|---------------------------------|------------------|-----------------|
| Catalog No. | Height (A) | Width (B) | Depth (C) | Industry Standard | Catalog No. | Panel Height (D) | Panel Width (E) |
| SCE-84XM4EW18SS | 84.00 | 157.50 | 18.00 | IS6 | SCE-76P76** (2) | 72.00 | 72.00 |
| SCE-84XM4EW24SS | 84.00 | 157.50 | 24.00 | IS6 | SCE-76P76** (2) | 72.00 | 72.00 |
| SCE-90XM4EW18SS | 90.00 | 157.50 | 18.00 | IS6 | SCE-82P76** (2) | 78.00 | 72.00 |
| SCE-90XM4EW24SS | 90.00 | 157.50 | 24.00 | IS6 | SCE-82P76** (2) | 78.00 | 72.00 |

316 STAINLESS STEEL

| Enclosure Product Code S2 | | | | | Sub-Panel (P3) | | |
|----------------------------------|------------|-----------|-----------|-------------------|---------------------------------|------------------|-----------------|
| Catalog No. | Height (A) | Width (B) | Depth (C) | Industry Standard | Catalog No. | Panel Height (D) | Panel Width (E) |
| SCE-84XM4EW18SS6 | 84.00 | 157.50 | 18.00 | IS6 | SCE-76P76** (2) | 72.00 | 72.00 |
| SCE-84XM4EW24SS6 | 84.00 | 157.50 | 24.00 | IS6 | SCE-76P76** (2) | 72.00 | 72.00 |
| SCE-90XM4EW18SS6 | 90.00 | 157.50 | 18.00 | IS6 | SCE-82P76** (2) | 78.00 | 72.00 |
| SCE-90XM4EW24SS6 | 90.00 | 157.50 | 24.00 | IS6 | SCE-82P76** (2) | 78.00 | 72.00 |

**Sub-panel included with enclosure. Replacement sub-panels can be ordered.

STAINLESS STEEL HEAVY DUTY FREE-STANDING ENCLOSURES FOR FLANGE-MOUNTED DISCONNECTS

FIVE-DOOR ENCLOSURES 304 STAINLESS STEEL

| Enclosure Product Code S2 | | | | | Sub-Panel (P3) | | |
|---------------------------------|------------|-----------|-----------|-------------------|---------------------------------|------------------|-----------------|
| Catalog No. | Height (A) | Width (B) | Depth (C) | Industry Standard | Catalog No. | Panel Height (D) | Panel Width (E) |
| SCE-84XM5EW18SS | 84.00 | 196.75 | 18.00 | IS6 | SCE-76P37** (2) | 72.00 | 33.75 |
| | | | | | SCE-76P76** | 72.00 | 72.00 |
| SCE-84XM5EW24SS | 84.00 | 196.75 | 24.00 | IS6 | SCE-76P37** (2) | 72.00 | 33.75 |
| | | | | | SCE-76P76** | 72.00 | 72.00 |
| SCE-90XM5EW18SS | 90.00 | 196.75 | 18.00 | IS6 | SCE-82P37** (2) | 78.00 | 33.75 |
| | | | | | SCE-82P76** | 78.00 | 72.00 |
| SCE-90XM5EW24SS | 90.00 | 196.75 | 24.00 | IS6 | SCE-82P37** (2) | 78.00 | 33.75 |
| | | | | | SCE-82P76** | 78.00 | 72.00 |

316 STAINLESS STEEL

| Enclosure Product Code S2 | | | | | Sub-Panel (P3) | | |
|----------------------------------|------------|-----------|-----------|-------------------|---------------------------------|------------------|-----------------|
| Catalog No. | Height (A) | Width (B) | Depth (C) | Industry Standard | Catalog No. | Panel Height (D) | Panel Width (E) |
| SCE-84XM5EW18SS6 | 84.00 | 196.75 | 18.00 | IS6 | SCE-76P37** (2) | 72.00 | 33.75 |
| | | | | | SCE-76P76** | 72.00 | 72.00 |
| SCE-84XM5EW24SS6 | 84.00 | 196.75 | 24.00 | IS6 | SCE-76P37** (2) | 72.00 | 33.75 |
| | | | | | SCE-76P76** | 72.00 | 72.00 |
| SCE-90XM5EW18SS6 | 90.00 | 196.75 | 18.00 | IS6 | SCE-82P37** (2) | 78.00 | 33.75 |
| | | | | | SCE-82P76** | 78.00 | 72.00 |
| SCE-90XM5EW24SS6 | 90.00 | 196.75 | 24.00 | IS6 | SCE-82P37** (2) | 78.00 | 33.75 |
| | | | | | SCE-82P76** | 78.00 | 72.00 |

SIX-DOOR ENCLOSURES 304 STAINLESS STEEL

| Enclosure Product Code S2 | | | | | Sub-Panel (P3) | | |
|---------------------------------|------------|-----------|-----------|-------------------|---------------------------------|------------------|-----------------|
| Catalog No. | Height (A) | Width (B) | Depth (C) | Industry Standard | Catalog No. | Panel Height (D) | Panel Width (E) |
| SCE-84XM6EW24SS | 84.00 | 235.00 | 24.00 | IS6 | SCE-76P76** (3) | 72.00 | 72.00 |
| SCE-90XM6EW24SS | 90.00 | 235.00 | 24.00 | IS6 | SCE-82P76** (3) | 78.00 | 72.00 |

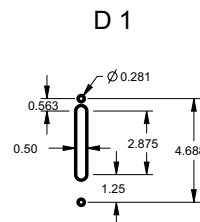
316 STAINLESS STEEL

| Enclosure Product Code S2 | | | | | Sub-Panel (P3) | | |
|----------------------------------|------------|-----------|-----------|-------------------|---------------------------------|------------------|-----------------|
| Catalog No. | Height (A) | Width (B) | Depth (C) | Industry Standard | Catalog No. | Panel Height (D) | Panel Width (E) |
| SCE-84XM6EW24SS6 | 84.00 | 235.00 | 24.00 | IS6 | SCE-76P76** (3) | 72.00 | 72.00 |
| SCE-90XM6EW24SS6 | 90.00 | 235.00 | 24.00 | IS6 | SCE-82P76** (3) | 78.00 | 72.00 |

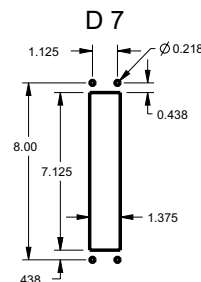
XM ENCLOSURES

* Add the letter U to the end of the part number for enclosures with a universal disconnect cutout.

Standard Disconnect cutout provided



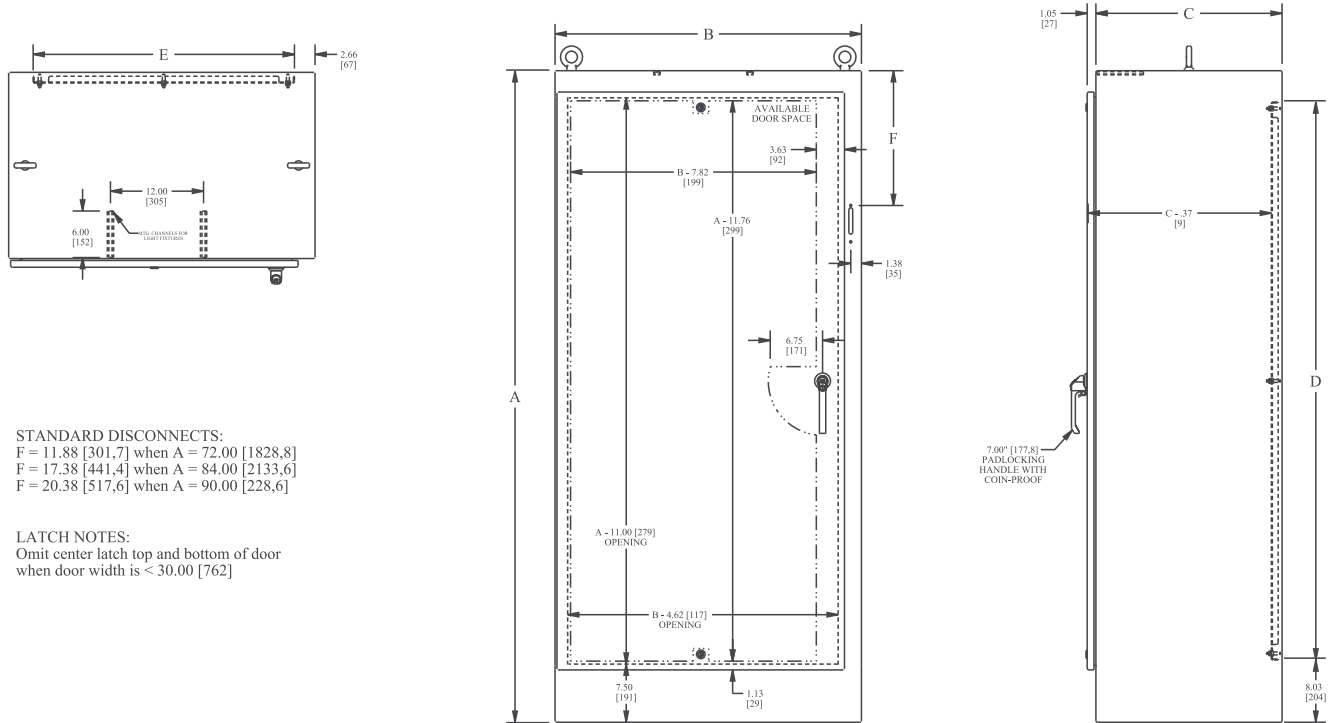
Universal Disconnect cutout



STAINLESS STEEL HEAVY DUTY FREE-STANDING ENCLOSURES FOR FLANGE-MOUNTED DISCONNECTS

TECHNICAL DATA

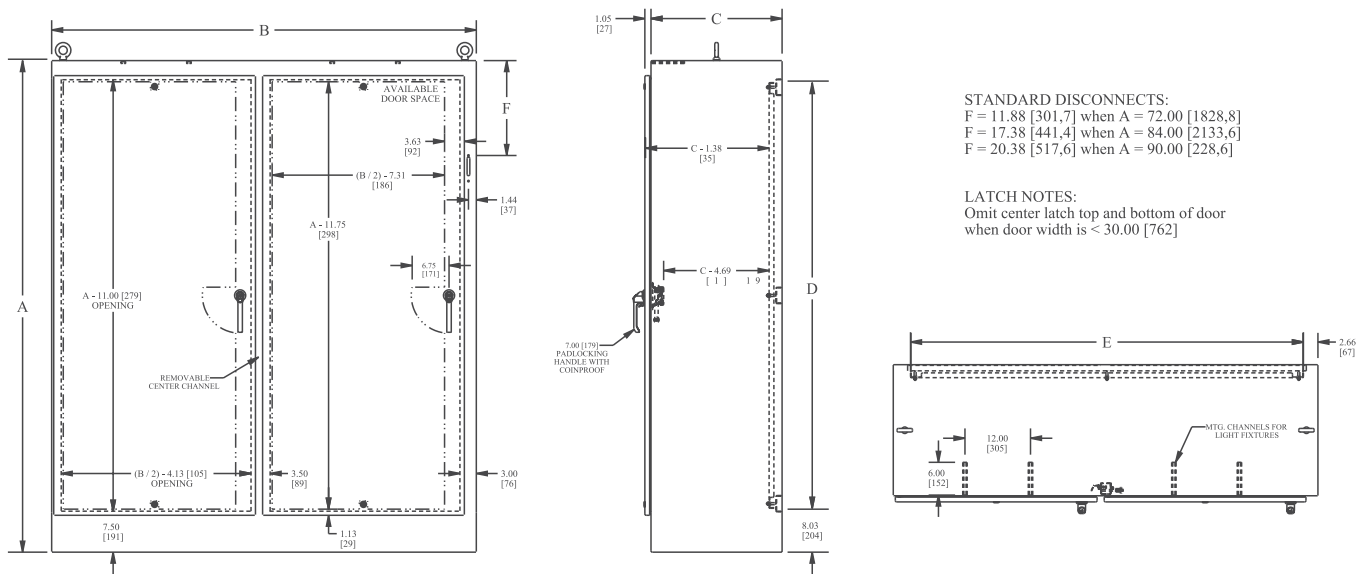
SINGLE-DOOR ENCLOSURE



STANDARD DISCONNECTS:
 F = 11.88 [301,7] when A = 72.00 [1828,8]
 F = 17.38 [441,4] when A = 84.00 [2133,6]
 F = 20.38 [517,6] when A = 90.00 [228,6]

LATCH NOTES:
 Omit center latch top and bottom of door when door width is < 30.00 [762]

TWO-DOOR ENCLOSURE



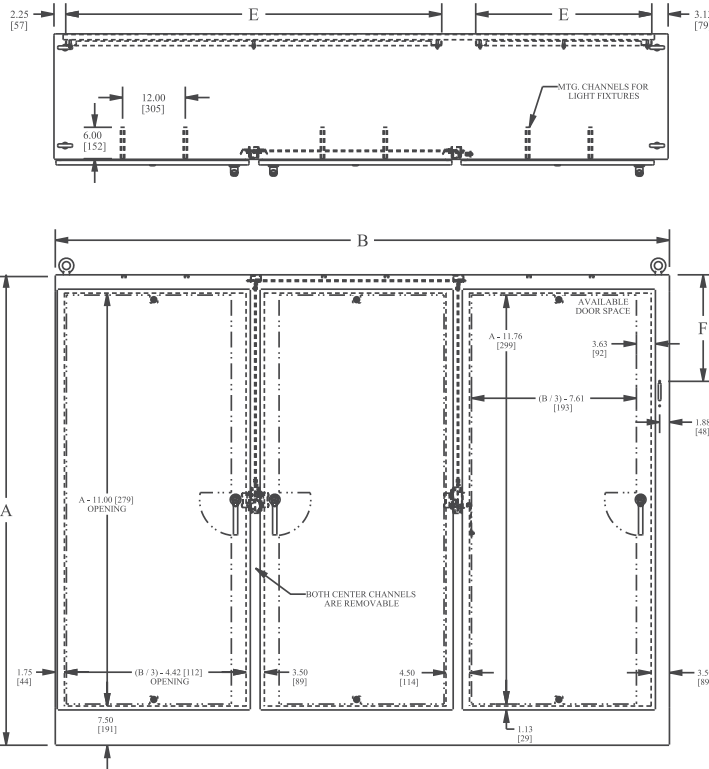
STANDARD DISCONNECTS:
 F = 11.88 [301,7] when A = 72.00 [1828,8]
 F = 17.38 [441,4] when A = 84.00 [2133,6]
 F = 20.38 [517,6] when A = 90.00 [228,6]

LATCH NOTES:
 Omit center latch top and bottom of door when door width is < 30.00 [762]

STAINLESS STEEL HEAVY DUTY FREE-STANDING ENCLOSURES FOR FLANGE-MOUNTED DISCONNECTS

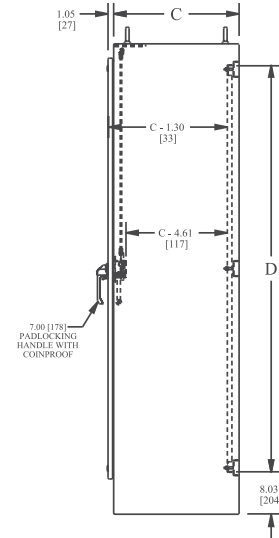
TECHNICAL DATA

THREE-DOOR ENCLOSURE

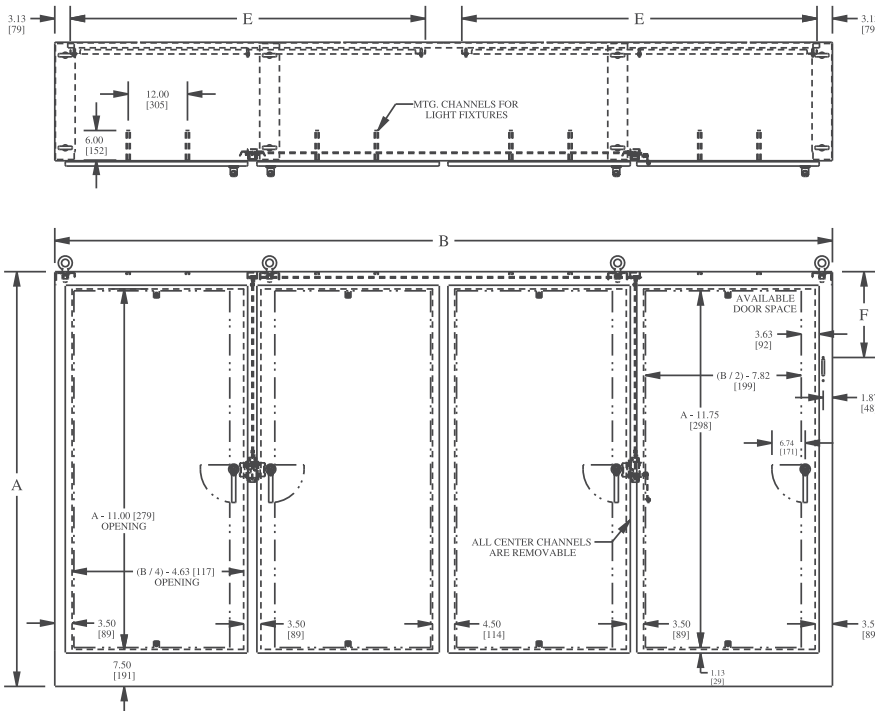


STANDARD DISCONNECTS:
F = 11.88 [301,7] when A = 72.00 [1828,8]
F = 17.38 [441,4] when A = 84.00 [2133,6]
F = 20.38 [517,6] when A = 90.00 [228,6]

LATCH NOTES:
Omit center latch top and bottom of door when door width is < 30.00 [762]

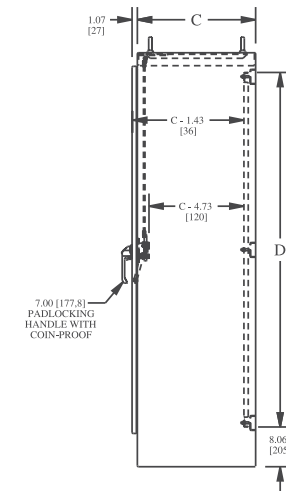


FOUR-DOOR ENCLOSURE



STANDARD DISCONNECTS:
F = 11.88 [301,7] when A = 72.00 [1828,8]
F = 17.38 [441,4] when A = 84.00 [2133,6]
F = 20.38 [517,6] when A = 90.00 [228,6]

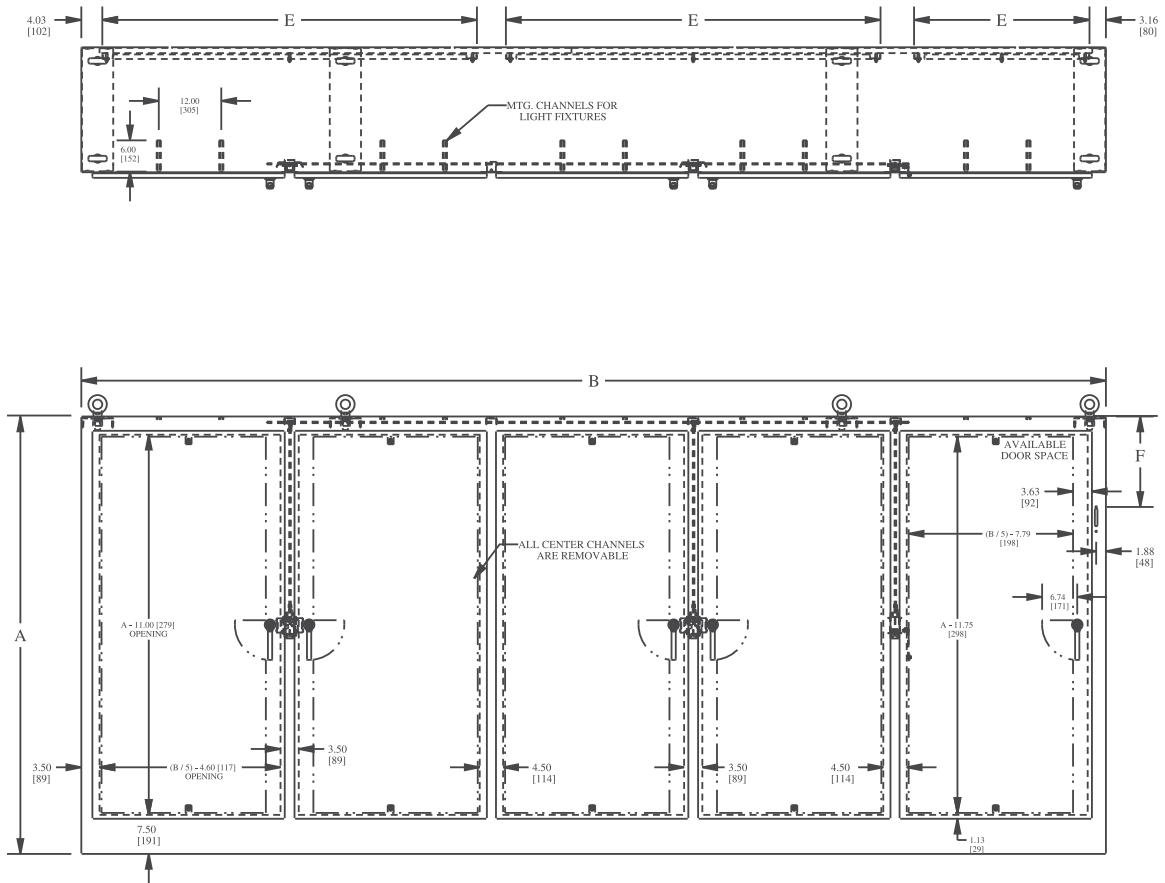
LATCH NOTES:
Omit center latch top and bottom of door when door width is < 30.00 [762]



STAINLESS STEEL HEAVY DUTY FREE-STANDING ENCLOSURES FOR FLANGE-MOUNTED DISCONNECTS

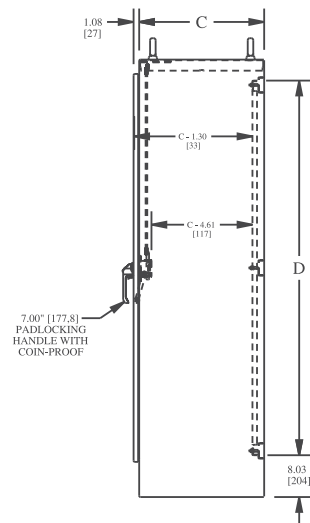
TECHNICAL DATA

FIVE-DOOR ENCLOSURE



STANDARD DISCONNECTS:
 $F = 11.88$ [301,7] when $A = 72.00$ [1828,8]
 $F = 17.38$ [441,4] when $A = 84.00$ [2133,6]
 $F = 20.38$ [517,6] when $A = 90.00$ [228,6]

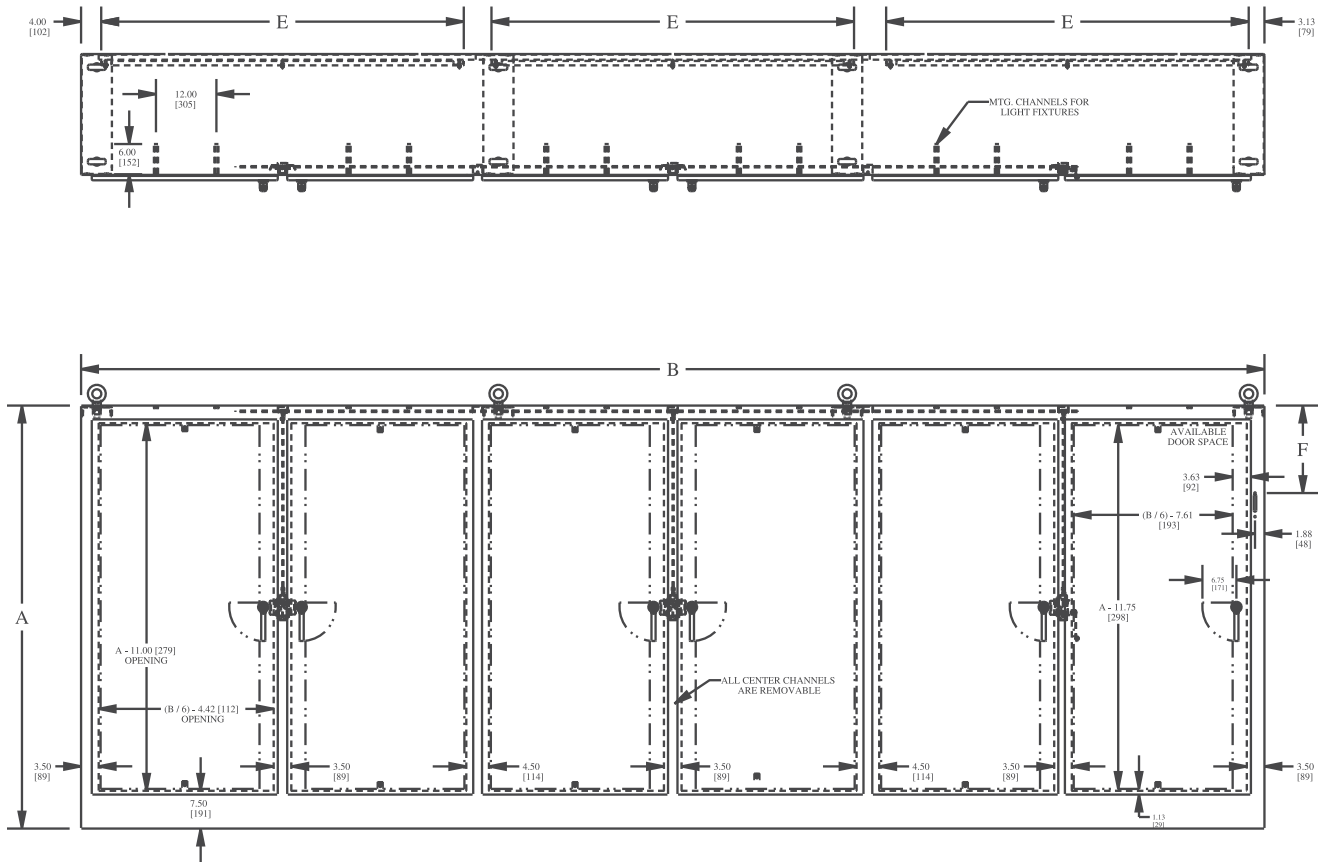
LATCH NOTES:
 Omit center latch top and bottom of door
 when door width is < 30.00 [762]



STAINLESS STEEL HEAVY DUTY FREE-STANDING ENCLOSURES FOR FLANGE-MOUNTED DISCONNECTS

TECHNICAL DATA

SIX-DOOR ENCLOSURE



STANDARD DISCONNECTS:
 $F = 11.88$ [301,7] when $A = 72.00$ [1828,8]
 $F = 17.38$ [441,4] when $A = 84.00$ [2133,6]
 $F = 20.38$ [517,6] when $A = 90.00$ [228,6]

LATCH NOTES:
 Omit center latch top and bottom of door
 when door width is < 30.00 [762]

