



Your Enclosure Source[®]



Enclosures



CSE Program

(Customized Standard Enclosures)



SCE-09 GRAY Semi-Gloss	SCE-05 WHITE Full Gloss
RAL 1015 Beige Full Gloss	RAL 1018 Yellow Full Gloss
RAL 2004 Orange Full Gloss	RAL 3000 Red Full Gloss
RAL 5010 Blue Full Gloss	RAL 5015 Blue Full Gloss
RAL 5019 Blue Full Gloss	RAL 5024 Blue Full Gloss
RAL 8023 Orange Full Gloss	RAL 7030 Gray Full Gloss
RAL 7032 Gray Full Gloss	RAL 7035 Gray Full Gloss
RAL 9002 Gray Full Gloss	RAL 9011 Black Sand Texture
RAL 9010 White Full Gloss	

Note: Colors are close representations with standard monitor settings and are not intended for match. Color charts may also vary by manufacturer.

Semi-Gloss = 60 to 70 Gloss Level acc. to ASTM 523 / 60° angle
Full Gloss = 80 to 90 Gloss Level acc. to ASTM 523 / 60° angle

Operator System Enclosures



Stainless Steel



Modular Enclosures

Modular



IMS



Wall-Mount Enclosures

Pushbutton



EnviroLine®



Type 3R



Two-Door



Clamp Fastened



Type 1



Stainless Steel Wall-Mount Enclosures

EnviroLine® Sloping Top



EnviroLine®



Free-Standing & Floor Mounted Enclosures

Free-Standing Single and Dual Access



Two-Door



Multi-Door



Heavy Duty Disconnect



Free-Standing / Wall-Mount Disconnect



Heavy Duty w/ External Disconnect Installed



Stainless Steel Free-Standing & Floor Mounted Enclosures

Enviroline® Sloping Top



Enviroline®



Fiberglass Enclosures

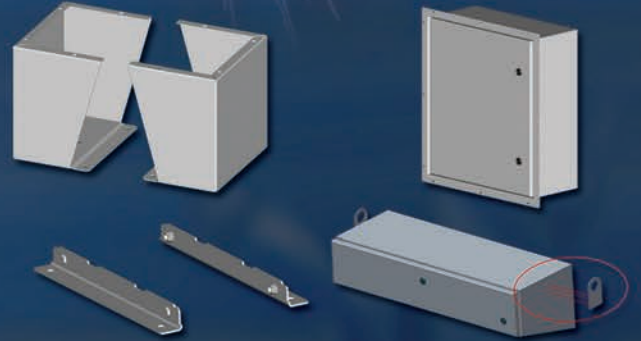


Accessories

Thermal Management



Mounting Options



Door Hardware



General Accessories



Mounting Panels



Protective Access Enclosures





**SAGINAW
CONTROL &
ENGINEERING**

Your Enclosure Source®



Kenosha Industrial Park

5110 70th Avenue
Kenosha, Wisconsin 53144
Phone (262) 657-4700 • Fax (262) 657-4774
Toll Free (800) 345-2080
e-mail: Kenosha@saginawcontrol.com



Corporate Office

95 Midland Road
Saginaw, Michigan 48638
Phone (989) 799-6871 • Fax (989) 799-4524
Toll Free (800) 234-6871
e-mail: sce@saginawcontrol.com
<http://www.saginawcontrol.com>



Aurora Industrial Park

40 Aurora Industrial Parkway
Aurora, Ohio 44202
Phone (330) 995-9800 • Fax (330) 995-9802
Toll Free (888) 216-9803
e-mail: Aurora@saginawcontrol.com



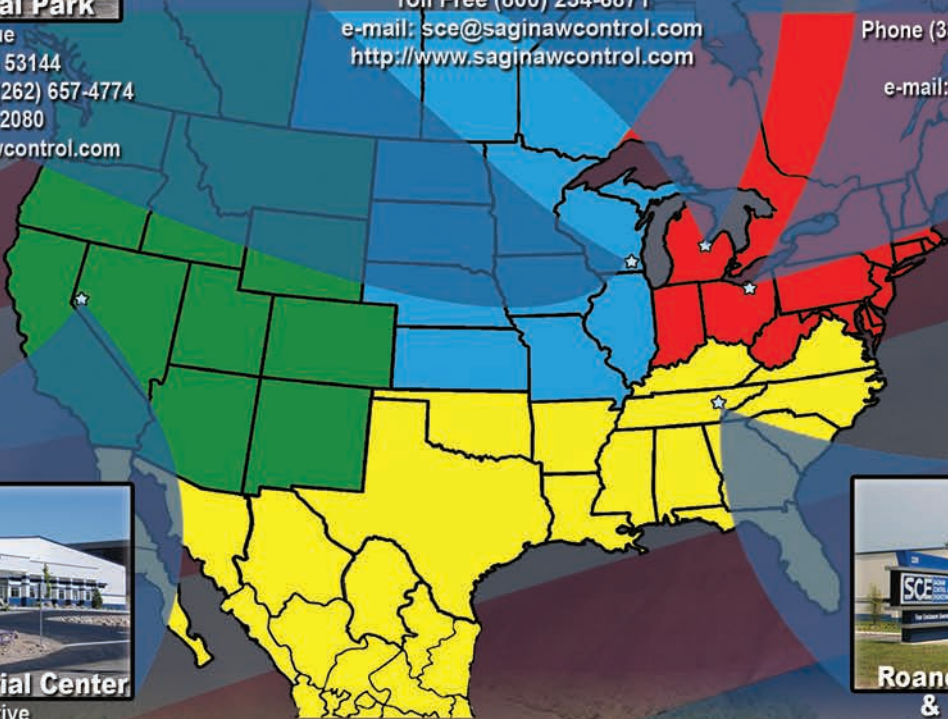
Tahoe-Reno Industrial Center

795 Denmark Drive
McCarran, Nevada 89434
Phone (775) 343-1834 • Fax (775) 343-1838
Toll Free (877) 493-1834
e-mail: Reno@saginawcontrol.com



**Roane Regional Business
& Technology Park**

220 Sam Rayburn Parkway
Lenoir City, Tennessee 37771
Phone (865) 717-4861 • Fax (865) 717-4924
Toll Free (866) 710-4717
e-mail: LC@saginawcontrol.com



NEMA



SAE

Type 1, 3, 3R, 3S, 4, 4X, 12