

## Application

Designed to house standard pushbuttons, switches and pilot lights in wet and hosed down areas and in corrosive atmospheres. For installation information, consult our Installation Manual at [www.saginawcontrol.com](http://www.saginawcontrol.com).

## Construction

- 0.063" stainless steel Type 304 & 316/316L.
- Seams continuously welded and ground smooth.
- Captivated cover screws thread into sealed wells.
- 4-way pushbutton holes accept all brands of oil-tight pushbuttons, switches and pilot lights. Hole diameter 1.20" (30.5 mm).
- Immediate removal of cover is permitted.
- Pour in place oil and water resistant gasket
- Welded mounting provision top and bottom of back.

## Finish

#4 brushed finish on all exterior surfaces.

## IS5 Industry Standards

NEMA Type 4, 4X, 12 & Type 13  
 UL Listed Type 4, 4X & 12  
 CSA Type 4, 4X & 12  
 IEC 60529 IP66

## 304 STAINLESS STEEL

Enclosure Product Code S1

Catalog No.	Height (A)	Width (B)	Depth (C)	Industry Standard
<a href="#">SCE-1PBSS</a>	3.50	3.25	2.75	IS5
<a href="#">SCE-1PBXSS</a>	4.00	4.00	4.75	IS5
<a href="#">SCE-2PBSS</a>	5.75	3.25	2.75	IS5
<a href="#">SCE-2PBXSS</a>	6.00	4.00	4.75	IS5
<a href="#">SCE-3PBSS</a>	8.00	3.25	2.75	IS5
<a href="#">SCE-3PBXSS</a>	8.00	4.00	4.75	IS5
<a href="#">SCE-4PBSS</a>	10.25	3.25	2.75	IS5
<a href="#">SCE-4PBXSS</a>	10.00	4.00	4.75	IS5
<a href="#">SCE-4SPBSS</a>	7.25	6.25	3.00	IS5
<a href="#">SCE-6PBSS</a>	9.50	6.25	3.00	IS5
<a href="#">SCE-9PBSS</a>	9.50	8.50	3.00	IS5
<a href="#">SCE-12PBSS</a>	11.75	8.50	3.00	IS5

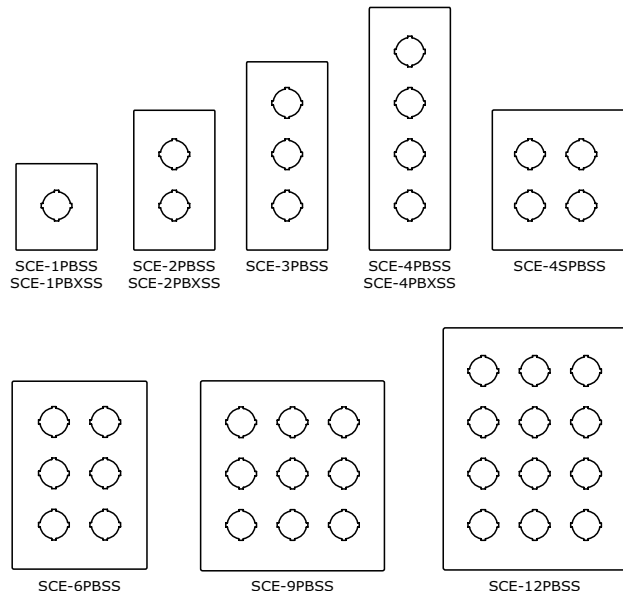
## 316 STAINLESS STEEL

Enclosure Product Code S1

Catalog No.	Height (A)	Width (B)	Depth (C)	Industry Standard
<a href="#">SCE-1PBSS6</a>	3.50	3.25	2.75	IS5
<a href="#">SCE-1PBXSS6</a>	4.00	4.00	4.75	IS5
<a href="#">SCE-2PBSS6</a>	5.75	3.25	2.75	IS5
<a href="#">SCE-2PBXSS6</a>	6.00	4.00	4.75	IS5
<a href="#">SCE-3PBSS6</a>	8.00	3.25	2.75	IS5
<a href="#">SCE-4PBSS6</a>	10.25	3.25	2.75	IS5
<a href="#">SCE-4PBXSS6</a>	10.00	4.00	4.75	IS5
<a href="#">SCE-4SPBSS6</a>	7.25	6.25	3.00	IS5
<a href="#">SCE-6PBSS6</a>	9.50	6.25	3.00	IS5
<a href="#">SCE-9PBSS6</a>	9.50	8.50	3.00	IS5
<a href="#">SCE-12PBSS6</a>	11.75	8.50	3.00	IS5

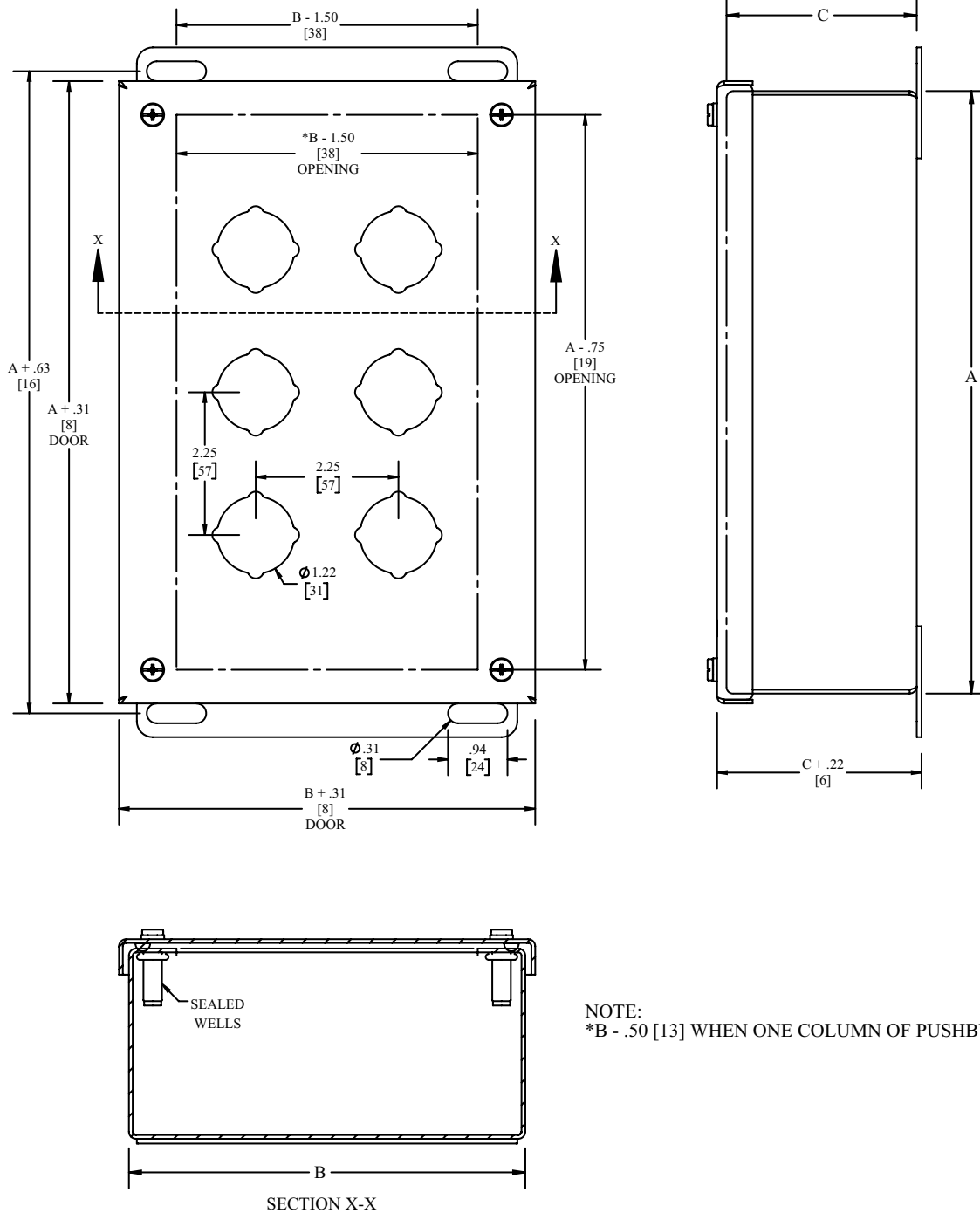


254



# STAINLESS STEEL 30.5MM PUSHBUTTON ENCLOSURES

## TECHNICAL DATA



NOTE:  
\*B - .50 [13] WHEN ONE COLUMN OF PUSHBUTTONS