

Application

Designed to house standard pushbuttons, switches and pilot lights in wet and hosed down areas and in corrosive atmospheres. For installation information, consult our Installation Manual at www.saginawcontrol.com.

Construction

- 0.063" stainless steel Type 304 & 316/316L.
- Seams continuously welded and ground smooth.
- Captivated cover screws thread into sealed wells.
- 4-way pushbutton holes accept all brands of oil-tight pushbuttons, switches and pilot lights. Hole diameter 0.87" (22.5 mm).
- Immediate removal of cover is permitted.
- Pour in place oil and water resistant gasket
- Welded mounting provision top and bottom of back.

Finish

#4 brushed finish on all exterior surfaces.

IS5 Industry Standards

NEMA Type 4, 4X, 12 & Type 13
 UL Listed Type 4, 4X & 12
 CSA Type 4, 4X & 12
 IEC 60529 IP66

304 STAINLESS STEEL

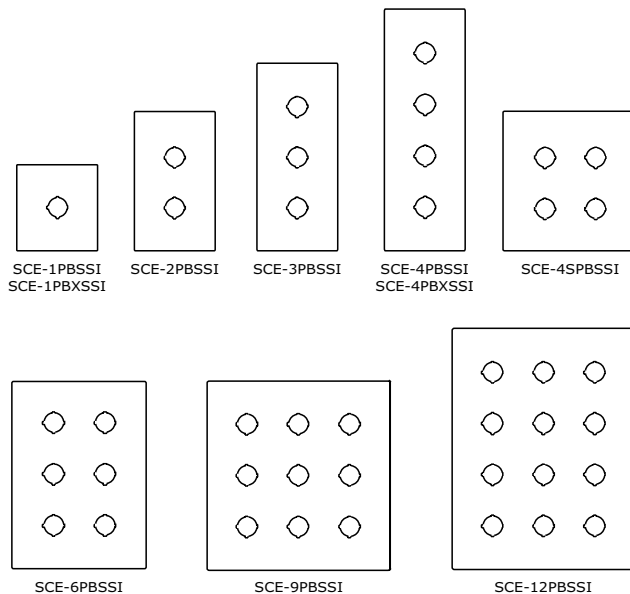
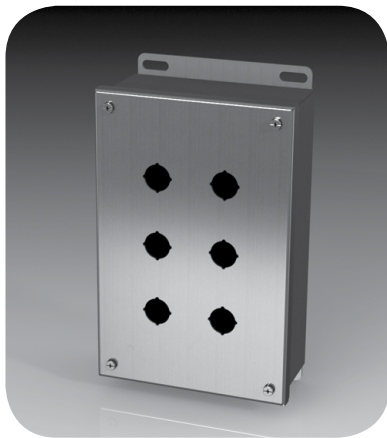
Enclosure Product Code S1

Catalog No.	Height (A)	Width (B)	Depth (C)	Industry Standard
SCE-1PBSSI	3.50	3.25	2.75	IS5
SCE-1PBXSSI	4.00	4.00	4.75	IS5
SCE-2PBSSI	5.75	3.25	2.75	IS5
SCE-3PBSSI	8.00	3.25	2.75	IS5
SCE-4PBSSI	10.25	3.25	2.75	IS5
SCE-4PBXSSI	10.00	4.00	4.75	IS5
SCE-4SPBSSI	7.25	6.25	3.00	IS5
SCE-6PBSSI	9.50	6.25	3.00	IS5
SCE-9PBSSI	9.50	8.50	3.00	IS5
SCE-12PBSSI	11.75	8.50	3.00	IS5

316 STAINLESS STEEL

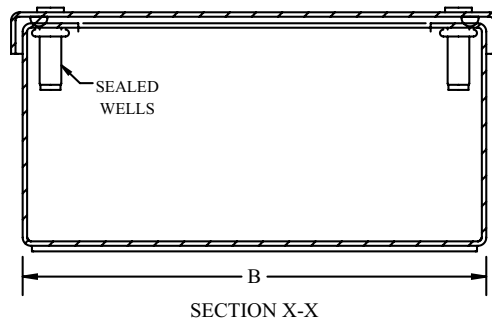
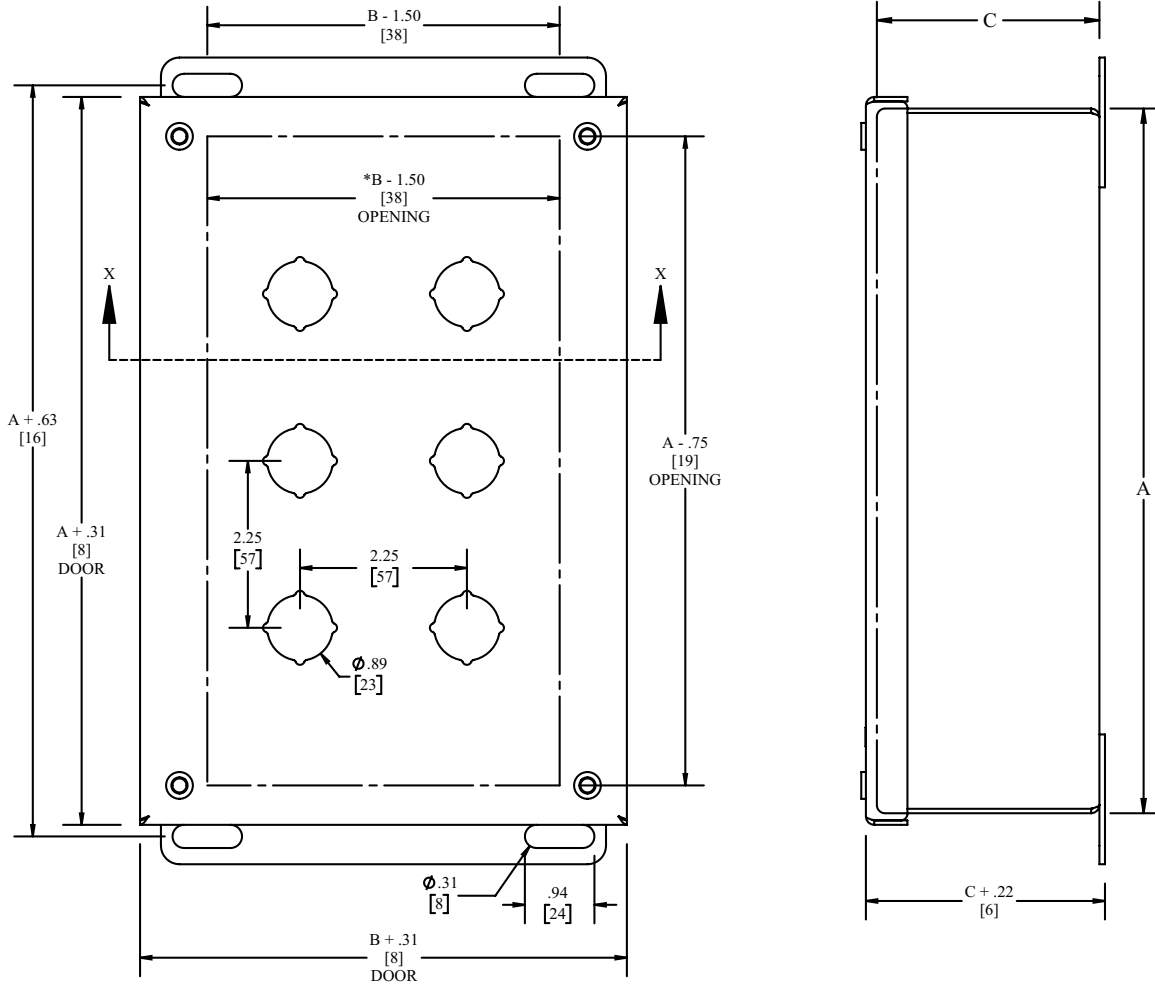
Enclosure Product Code S1

Catalog No.	Height (A)	Width (B)	Depth (C)	Industry Standard
SCE-1PBSS6I	3.50	3.25	2.75	IS5
SCE-1PBXSS6I	4.00	4.00	4.75	IS5
SCE-2PBSS6I	5.75	3.25	2.75	IS5
SCE-3PBSS6I	8.00	3.25	2.75	IS5
SCE-4PBSS6I	10.25	3.25	2.75	IS5
SCE-4PBXSS6I	10.00	4.00	4.75	IS5
SCE-4SPBSS6I	7.25	6.25	3.00	IS5
SCE-6PBSS6I	9.50	6.25	3.00	IS5
SCE-9PBSS6I	9.50	8.50	3.00	IS5
SCE-12PBSS6I	11.75	8.50	3.00	IS5



STAINLESS STEEL 22.5MM PUSHBUTTON ENCLOSURES

TECHNICAL DATA



NOTE:
*B - .50 [13] WHEN ONE COLUMN OF PUSHBUTTONS