

LARGE ENCLOSURE UPDATE

Due to the changing requirements from the freight carriers, large enclosures shipping on skids greater than 144" will now be shipping in multiple pieces. The example below shows the current model SCE-84XM4EW18 which will now be broken down into two enclosures SCE-84XMR2D18 and SCE-84XML2D18. These two enclosures combined will now replace part number SCE-84XM4EW18. The images below show the layout of the replacement enclosures.



SCE-84XM4EW18



SCE-84XML2D18



SCE-84XMR2D18

With the same format in our 16th edition catalog the following pages are a breakdown showing the current part numbers along with the replacement part numbers. The information normally given (height, width, depth) will remain the same.

Catalog No.			Height (A)	Width (B)	Depth (C)	Catalog No.	Panel Height (D)	Panel Width (E)
SCE-84XM4EW18			84	157.5	18			
Equals Qty 1 Part#	SCE-84XMR2D18	2DR Right XM	84	78.75	18	SCE-76P76	72	72
Equals Qty 1 Part#	SCE-84XML2D18	2DR Left XM	84	78.75	18	SCE-76P76	72	72

Current part number

New part numbers

The page number referenced at the bottom corresponds to or near the page in the 16th edition catalog.

HEAVY DUTY FREE-STANDING ENCLOSURES FOR FLANGE-MOUNTED DISCONNECTS

Application

Designed to house electrical equipment and provide degree of protection from dirt, dust, oil and water and to house most standard type disconnects. For installation information, consult our installation manual at www.saginawcontrol.com.

Construction

- 0.125" carbon steel.
- Seams continuously welded and ground smooth.
- Flange trough collar around all sides of door opening.
- Body stiffeners in large enclosures for extra rigidity.
- Heavy duty lifting eyes anchor into reinforced top.
- Removable center posts permit easy sub-panel installation.
- Concealed hinges.
- Black zinc die cast coinproof/padlocking handle on main door with black zinc die cast padlocking handle on slave doors.
- 3-point latching mechanism.
- Ends of latch rods have ramp shoes for easier door closing.
- Panel supports.
- Large removable print pockets.
- Pour in place oil and water resistant gasket.
- Removable panels mount on collar studs.
- Master door is far right-hand door on all enclosures.
- Defeater on master door requires a screwdriver to open.
- Mechanical interlock activated by master door prevents slave doors from being opened first. Doors can be closed in any order.
- Hole plugs provided to seal holes in bottom of enclosure.
- Ground stud on door and body.
- Provisions for light kit.

Disconnect switch (or circuit breaker) and operating mechanism are not furnished with enclosure.

Finish

ANSI-61 gray powder coated inside and out.

IS3 Industry Standards

NEMA Type 3R, 12 & Type 13
UL Listed Type 3R & 12
CSA Type 3R & 12
IEC 60529 IP55

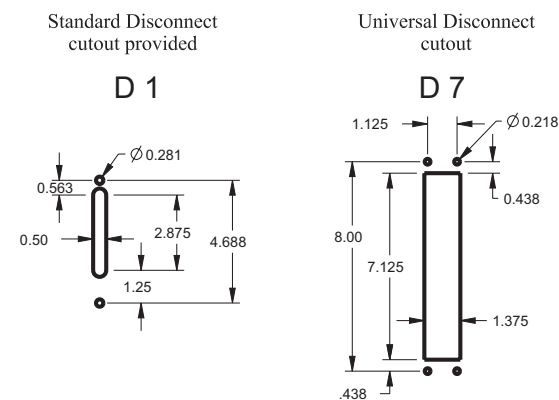
***To maintain Type 3R listing, drainage is required. Install equally rated drainage device or drill a 1/8 to 1/4 inch hole in the bottom center of the enclosure, approximately 1 inch from the right, and 1 inch from the left for drainage, use listed rain-tight or wet location hubs. Drip shield over the door is recommended for all outdoor applications.

Part numbers ending in "G" have galvanized sub-panels installed.

**Sub-panel included with enclosure. Replacement sub-panels can be ordered.

XM ENCLOSURES

* Add the letter U to the end of the part number for enclosures with a universal disconnect cutout.



FOUR-DOOR ENCLOSURES

Enclosure Product Code A2						Sub-Panel (P3)		
Catalog No.			Height (A)	Width (B)	Depth (C)	Catalog No.	Panel Height (D)	Panel Width (E)
SCE-84XM4EW18			84	157.5	18			
Equals Qty 1 Part#	SCE-84XMR2D18	2DR Right XM	84	78.75	18	SCE-76P76	72	72
Equals Qty 1 Part#	SCE-84XML2D18	2DR Left XM	84	78.75	18	SCE-76P76	72	72
SCE-84XM4EW18G			84	157.5	18			
Equals Qty 1 Part#	SCE-84XMR2D18G	2DR Right XM	84	78.75	18	SCE-76P76GALV	72	72
Equals Qty 1 Part#	SCE-84XML2D18G	2DR Left XM	84	78.75	18	SCE-76P76GALV	72	72
SCE-84XM4EW24			84	157.5	24			
Equals Qty 1 Part#	SCE-84XMR2D24	2DR Right XM	84	78.75	24	SCE-76P76	72	72
Equals Qty 1 Part#	SCE-84XML2D24	2DR Left XM	84	78.75	24	SCE-76P76	72	72
SCE-84XM4EW24G			84	157.5	24			
Equals Qty 1 Part#	SCE-84XMR2D24G	2DR Right XM	84	78.75	24	SCE-76P76GALV	72	72
Equals Qty 1 Part#	SCE-84XML2D24G	2DR Left XM	84	78.75	24	SCE-76P76GALV	72	72
SCE-90XM4EW18			90	157.5	18			
Equals Qty 1 Part#	SCE-90XMR2D18	2DR Right XM	90	78.75	18	SCE-82P76	78	72
Equals Qty 1 Part#	SCE-90XML2D18	2DR Left XM	90	78.75	18	SCE-82P76	78	72
SCE-90XM4EW18G			90	157.5	18			
Equals Qty 1 Part#	SCE-90XMR2D18G	2DR Right XM	90	78.75	18	SCE-82P76GALV	78	72
Equals Qty 1 Part#	SCE-90XML2D18G	2DR Left XM	90	78.75	18	SCE-82P76GALV	78	72
SCE-90XM4EW24			90	157.5	24			
Equals Qty 1 Part#	SCE-90XMR2D24	2DR Right XM	90	78.75	24	SCE-82P76	78	72
Equals Qty 1 Part#	SCE-90XML2D24	2DR Left XM	90	78.75	24	SCE-82P76	78	72
SCE-90XM4EW24G			90	157.5	24			
Equals Qty 1 Part#	SCE-90XMR2D24G	2DR Right XM	90	78.75	24	SCE-82P76GALV	78	72
Equals Qty 1 Part#	SCE-90XML2D24G	2DR Left XM	90	78.75	24	SCE-82P76GALV	78	72



2DR Left XM



2DR Right XM

HEAVY DUTY FREE-STANDING ENCLOSURES FOR FLANGE-MOUNTED DISCONNECTS

FIVE-DOOR ENCLOSURES

Enclosure Product Code A2

Sub-Panel (P3)

Catalog No.			Height (A)	Width (B)	Depth (C)	Catalog No.	Panel Height (D)	Panel Width (E)
SCE-84XM5EW18			84	196.75	18			
Equals Qty 1 Part#	SCE-84XMR3D18	3DR Right XM	84	118	18	SCE-76P76	72	72
						SCE-76P37	72	33.75
Equals Qty 1 Part#	SCE-84XML2D18	2DR Left XM	84	78.75	18	SCE-76P76	72	72
SCE-84XM5EW18G			84	196.75	18			
Equals Qty 1 Part#	SCE-84XMR3D18G	3DR Right XM	84	118	18	SCE-76P76GALV	72	72
						SCE-76P37GALV	72	33.75
Equals Qty 1 Part#	SCE-84XML2D18G	2DR Left XM	84	78.75	18	SCE-76P76GALV	72	72
SCE-84XM5EW24			84	196.75	24			
Equals Qty 1 Part#	SCE-84XMR3D24	3DR Right XM	84	118	24	SCE-76P76	72	72
						SCE-76P37	72	33.75
Equals Qty 1 Part#	SCE-84XML2D24	2DR Left XM	84	78.75	24	SCE-76P76	72	72
SCE-84XM5EW24G			84	196.75	24			
Equals Qty 1 Part#	SCE-84XMR3D24G	3DR Right XM	84	118	24	SCE-76P76GALV	72	72
						SCE-76P37GALV	72	33.75
Equals Qty 1 Part#	SCE-84XML2D24G	2DR Left XM	84	78.75	24	SCE-76P76GALV	72	72
SCE-90XM5EW18			90	196.75	18			
Equals Qty 1 Part#	SCE-90XMR3D18	3DR Right XM	90	118	18	SCE-82P76	78	72
						SCE-82P37	78	33.75
Equals Qty 1 Part#	SCE-90XML2D18	2DR Left XM	90	78.75	18	SCE-82P76	78	72
SCE-90XM5EW18G			90	196.75	18			
Equals Qty 1 Part#	SCE-90XMR3D18G	3DR Right XM	90	118	18	SCE-82P76GALV	78	72
						SCE-82P37GALV	78	33.75
Equals Qty 1 Part#	SCE-90XML2D18G	2DR Left XM	90	78.75	18	SCE-82P76GALV	78	72
SCE-90XM5EW24			90	196.75	24			
Equals Qty 1 Part#	SCE-90XMR3D24	3DR Right XM	90	118	24	SCE-82P76	78	72
						SCE-82P37	78	33.75
Equals Qty 1 Part#	SCE-90XML2D24	2DR Left XM	90	78.75	24	SCE-82P76	78	72
SCE-90XM5EW24G			90	196.75	24			
Equals Qty 1 Part#	SCE-90XMR3D24G	3DR Right XM	90	118	24	SCE-82P76GALV	78	72
						SCE-82P37GALV	78	33.75
Equals Qty 1 Part#	SCE-90XML2D24G	2DR Left XM	90	78.75	24	SCE-82P76GALV	78	72



2DR Left XM

3DR Right XM

HEAVY DUTY FREE-STANDING ENCLOSURES FOR FLANGE-MOUNTED DISCONNECTS

SIX-DOOR ENCLOSURES

Enclosure Product Code A2

Sub-Panel (P3)

Catalog No.			Height (A)	Width (B)	Depth (C)	Catalog No.	Panel Height (D)	Panel Width (E)
SCE-84XM6EW24			84	235	24			
Equals Qty 1 Part#	SCE-84XMR2D24	2DR Right XM	84	78.75	24	SCE-76P76	72	72
Equals Qty 1 Part#	SCE-84XMC2D24	2DR Center XM	84	77.5	24	SCE-76P76	72	72
Equals Qty 1 Part#	SCE-84XML2D24	2DR Left XM	84	78.75	24	SCE-76P76	72	72
SCE-84XM6EW24G			84	235	24			
Equals Qty 1 Part#	SCE-84XMR2D24G	2DR Right XM	84	78.75	24	SCE-76P76GALV	72	72
Equals Qty 1 Part#	SCE-84XMC2D24G	2DR Center XM	84	77.5	24	SCE-76P76GALV	72	72
Equals Qty 1 Part#	SCE-84XML2D24G	2DR Left XM	84	78.75	24	SCE-76P76GALV	72	72
SCE-90XM6EW24			90	235	24			
Equals Qty 1 Part#	SCE-90XMR2D24	2DR Right XM	90	78.75	24	SCE-82P76	78	72
Equals Qty 1 Part#	SCE-90XMC2D24	2DR Center XM	90	77.5	24	SCE-82P76	78	72
Equals Qty 1 Part#	SCE-90XML2D24	2DR Left XM	90	78.75	24	SCE-82P76	78	72
SCE-90XM6EW24G			90	235	24			
Equals Qty 1 Part#	SCE-90XMR2D24G	2DR Right XM	90	78.75	24	SCE-82P76GALV	78	72
Equals Qty 1 Part#	SCE-90XMC2D24G	2DR Center XM	90	77.5	24	SCE-82P76GALV	78	72
Equals Qty 1 Part#	SCE-90XML2D24G	2DR Left XM	90	78.75	24	SCE-82P76GALV	78	72



2DR Left XM

2DR Center XM

2DR Right XM

XD HEAVY DUTY FREE-STANDING ENCLOSURES WITH EXTERNAL DISCONNECT ENCLOSURE INSTALLED

Application

Designed to house the main power supply in external enclosure on the right side of main enclosure, keeping the live side of the power supply separate from the primary electrical equipment. Provides protection from dirt, dust, oil and water and can house most standard type disconnects. For installation information consult our installation manual at www.saginawcontrol.com.

Construction

- 0.125" carbon steel.
- Seams continuously welded and ground smooth.
- Flange trough collar around all sides of door opening.
- Body stiffeners in large enclosures for extra rigidity.
- Heavy duty lifting eyes anchor into reinforced top.
- Removable center posts permit easy sub-panel installation.
- Concealed hinges.
- Black zinc die cast padlocking handles.
- 3-point latching mechanism.
- Large removable print pockets.
- Pour in place oil and water resistant gasket.
- Removable panels mount on collar studs.
- Defeater on master door requires a screwdriver to open.
- Mechanical interlock activated by the External Disconnect prevents main door of the enclosure from being closed unless the EXD enclosure is first closed.
- Mechanical interlock activated by master door prevents slave doors from being opened first. Doors can be closed in any order.
- Hole plugs provided to seal holes in bottom of enclosure.
- Ground stud on door and body.
- Provisions for light kit.

Disconnect switch (or circuit breaker) and operating mechanism are not furnished with enclosure.

Finish

ANSI-61 gray powder coated inside and out.

IS3 Industry Standards

NEMA Type 3R, 12 & Type 13
 UL Listed Type 3R & 12
 CSA Type 3R & 12
 IEC 60529 IP55

IS4 Industry Standards

NEMA Type 3R, 4, 12 & Type 13
 UL Listed Type 3R, 4 & 12
 CSA Type 3R, 4 & 12
 IEC 60529 IP66

***To maintain Type 3R listing, drainage is required. Install equally rated drainage device or drill a 1/8 to 1/4 inch hole in the bottom center of the enclosure, approximately 1 inch from the right, and 1 inch from the left for drainage, use listed rain-tight or wet location hubs. Drip shield over the door is recommended for all outdoor applications.

XD HEAVY DUTY FREE-STANDING ENCLOSURES WITH EXTERNAL DISCONNECT ENCLOSURE INSTALLED

FOUR-DOOR ENCLOSURES

Enclosure Product Code A2						Sub-Panel (P3)		
Catalog No.			Height (A)	Width (B)	Depth (D)	Catalog No.	Panel Height (D)	Panel Width (E)
SCE-84XD4EW18			84	157.5	18			
Equals Qty 1 Part#	SCE-84XDR2D18	2DR Right XD	84	78.75	18	SCE-76P76	72	72
Equals Qty 1 Part#	SCE-84XML2D18	2DR Left XM	84	78.75	18	SCE-76P76	72	72
SCE-84XD4EW18G			84	157.5	18			
Equals Qty 1 Part#	SCE-84XDR2D18G	2DR Right XD	84	78.75	18	SCE-76P76GALV	72	72
Equals Qty 1 Part#	SCE-84XML2D18G	2DR Left XM	84	78.75	18	SCE-76P76GALV	72	72
SCE-84XD4EW24G			84	157.5	24			
Equals Qty 1 Part#	SCE-84XDR2D24G	2DR Right XD	84	78.75	24	SCE-76P76GALV	72	72
Equals Qty 1 Part#	SCE-84XML2D24G	2DR Left XM	84	78.75	24	SCE-76P76GALV	72	72
SCE-90XD4EW18			90	157.5	18			
Equals Qty 1 Part#	SCE-90XDR2D18	2DR Right XD	90	78.75	18	SCE-82P76	78	72
Equals Qty 1 Part#	SCE-90XML2D18	2DR Left XM	90	78.75	18	SCE-82P76	78	72
SCE-90XD4EW18G			90	157.5	18			
Equals Qty 1 Part#	SCE-90XDR2D18G	2DR Right XD	90	78.75	18	SCE-82P76GALV	78	72
Equals Qty 1 Part#	SCE-90XML2D18G	2DR Left XM	90	78.75	18	SCE-82P76GALV	78	72
SCE-90XD4EW24G			90	157.5	24			
Equals Qty 1 Part#	SCE-90XDR2D24G	2DR Right XD	90	78.75	24	SCE-82P76GALV	78	72
Equals Qty 1 Part#	SCE-90XML2D24G	2DR Left XM	90	78.75	24	SCE-82P76GALV	78	72



2DR Left XM

2DR Right XD

FIVE-DOOR ENCLOSURES

Enclosure Product Code A2			Sub-Panel (P3)					
Catalog No.			Height (A)	Width (B)	Depth (D)	Catalog No.	Panel Height (D)	Panel Width (E)
SCE-84XD5EW18			84	196.75	18			
Equals Qty 1 Part#	SCE-84XDR3D18	3DR Right XD	84	118	18	SCE-76P76	72	72
						SCE-76P37	72	33.75
Equals Qty 1 Part#	SCE-84XML2D18	2DR Left XM	84	78.75	18	SCE-76P76	72	72
SCE-84XD5EW18G			84	196.75	18			
Equals Qty 1 Part#	SCE-84XDR3D18G	3DR Right XD	84	118	18	SCE-76P76GALV	72	72
						SCE-76P37GALV	72	33.75
Equals Qty 1 Part#	SCE-84XML2D18G	2DR Left XM	84	78.75	18	SCE-76P76GALV	72	72
SCE-90XD5EW18			90	196.75	18			
Equals Qty 1 Part#	SCE-90XDR3D18	3DR Right XD	90	118	18	SCE-82P76	78	72
						SCE-82P37	78	33.75
Equals Qty 1 Part#	SCE-90XML2D18	2DR Left XM	90	78.75	18	SCE-82P76	78	72
SCE-90XD5EW18G			90	196.75	18			
Equals Qty 1 Part#	SCE-90XDR3D18G	3DR Right XD	90	118	18	SCE-82P76GALV	78	72
						SCE-82P37GALV	78	33.75
Equals Qty 1 Part#	SCE-90XML2D18G	2DR Left XM	90	78.75	18	SCE-82P76GALV	78	72



2DR Left XM

3DR Right XD

SIX-DOOR ENCLOSURES

Enclosure Product Code A2						Sub-Panel (P3)		
Catalog No.			Height (A)	Width (B)	Depth (D)	Catalog No.	Panel Height (D)	Panel Width (E)
SCE-84XD6EW18			84	235	18			
Equals Qty 1 Part#	SCE-84XDR2D18	2DR Right XD	84	78.75	18	SCE-76P76	72	72
Equals Qty 1 Part#	SCE-84XMC2D18	2DR Center XM	84	77.5	18	SCE-76P76	72	72
Equals Qty 1 Part#	SCE-84XML2D18	2DR Left XM	84	78.75	18	SCE-76P76	72	72
SCE-84XD6EW18G			84	235	18			
Equals Qty 1 Part#	SCE-84XDR2D18G	2DR Right XD	84	78.75	18	SCE-76P76GALV	72	72
Equals Qty 1 Part#	SCE-84XMC2D18G	2DR Center XM	84	77.5	18	SCE-76P76GALV	72	72
Equals Qty 1 Part#	SCE-84XML2D18G	2DR Left XM	84	78.75	18	SCE-76P76GALV	72	72
SCE-90XD6EW18			90	235	18			
Equals Qty 1 Part#	SCE-90XDR2D18	2DR Right XD	90	78.75	18	SCE-82P76	78	72
Equals Qty 1 Part#	SCE-90XMC2D18	2DR Center XM	90	77.5	18	SCE-82P76	78	72
Equals Qty 1 Part#	SCE-90XML2D18	2DR Left XM	90	78.75	18	SCE-82P76	78	72
SCE-90XD6EW18G			90	235	18			
Equals Qty 1 Part#	SCE-90XDR2D18G	2DR Right XD	90	78.75	18	SCE-82P76GALV	78	72
Equals Qty 1 Part#	SCE-90XMC2D18G	2DR Center XM	90	77.5	18	SCE-82P76GALV	78	72
Equals Qty 1 Part#	SCE-90XML2D18G	2DR Left XM	90	78.75	18	SCE-82P76GALV	78	72



2DR Left XM

2DR Center XM

2DR Right XD

XR HEAVY DUTY FREE-STANDING ENCLOSURES WITH EXTERNAL ENCLOSURE FOR ROTARY DISCONNECT

Application

Designed to house the main power supply in external enclosure on the right side of main enclosure, keeping the live side of the power supply separate from the primary electrical equipment. Provision for Compact Fusible Disconnect with Rotary handle Disconnect 30 to 200 amp Allen-Bradley 194R, Square D GS2, Eaton/Bussmann R9, Siemens CFS models and Socomec Fuserbloc models. Provides protection from dirt, dust, oil and water and can house . For installation information consult our installation manual at www.saginawcontrol.com

Construction

- 0.125" carbon steel.
- Seams continuously welded and ground smooth.
- Flange trough collar around all sides of door opening.
- Body stiffeners in large enclosures for extra rigidity.
- Heavy duty lifting eyes anchor into reinforced top.
- Removable center posts permit easy sub-panel installation.
- Concealed hinges.
- Black zinc die cast padlocking handles.
- 3-point latching mechanism.
- Large removable print pockets.
- Pour in place oil and water resistant gasket.
- Removable panels mount on collar studs.
- Defeater on master door requires a screwdriver to open.
- Mechanical interlock activated by the External Disconnect prevents main door of the enclosure from being closed unless the EXD enclosure is first closed.
- Mechanical interlock activated by master door prevents slave doors from being opened first. Doors can be closed in any order.
- Hole plugs provided to seal holes in bottom of enclosure.
- Ground stud on door and body.
- Provisions for light kit.
- Provision Compact Fusible Disconnect with Rotary handle Disconnect 30 to 200 amp Allen-Bradley 194R, Square D GS2, Eaton/Bussmann R9, Siemens CFS models and Socomec Fuserbloc models.

Disconnect switch (or circuit breaker) and operating mechanism are not furnished with enclosure.

Finish

ANSI-61 gray powder coated inside and out.

IS3 Industry Standards

NEMA Type 3R, 12 & Type 13
UL Listed Type 3R & 12
CSA Type 3R & 12
IEC 60529 IP55

IS4 Industry Standards

NEMA Type 3R, 4, 12 & Type 13
UL Listed Type 3R, 4 & 12
CSA Type 3R, 4 & 12
IEC 60529 IP66

XR HEAVY DUTY FREE-STANDING ENCLOSURES WITH EXTERNAL ENCLOSURE FOR ROTARY DISCONNECT

FOUR-DOOR ENCLOSURES

Enclosure Product Code A2						Sub-Panel (P3)		
Catalog No.			Height (A)	Width (B)	Depth (C)	Catalog No.	Panel Height (D)	Panel Width (E)
SCE-84XR4EW18			84	157.5	18			
Equals Qty 1 Part#	SCE-84XRR2D18	2DR Right XR	84	78.75	18	SCE-76P76	72	72
Equals Qty 1 Part#	SCE-84XML2D18	2DR Left XM	84	78.75	18	SCE-76P76	72	72
SCE-84XR4EW18G			84	157.5	18			
Equals Qty 1 Part#	SCE-84XRR2D18G	2DR Right XR	84	78.75	18	SCE-76P76GALV	72	72
Equals Qty 1 Part#	SCE-84XML2D18G	2DR Left XM	84	78.75	18	SCE-76P76GALV	72	72
SCE-90XR4EW18			90	157.5	18			
Equals Qty 1 Part#	SCE-90XRR2D18	2DR Right XR	90	78.75	18	SCE-82P76	78	72
Equals Qty 1 Part#	SCE-90XML2D18	2DR Left XM	90	78.75	18	SCE-82P76	78	72
SCE-90XR4EW18G			90	157.5	18			
Equals Qty 1 Part#	SCE-90XRR2D18G	2DR Right XR	90	78.75	18	SCE-82P76GALV	78	72
Equals Qty 1 Part#	SCE-90XML2D18G	2DR Left XM	90	78.75	18	SCE-82P76GALV	78	72

Part numbers ending in "G" have galvanized sub-panels installed.

**Sub-panel included with enclosure. Replacement sub-panels can be ordered.

**Special Instructions apply for IS3, IS4 and IS6 to maintain the environmental rating of Type 3R for these parts. See the Special Instructions or the Industry Standards page in the Technical Section.



2DR Left XM



2DR Right XR

FIVE-DOOR ENCLOSURES

Enclosure Product Code A2

Sub-Panel (P3)

Catalog No.			Height (A)	Width (B)	Depth (C)	Catalog No.	Panel Height (D)	Panel Width (E)
SCE-84XR5EW18			84	196.75	18			
Equals Qty 1 Part#	SCE-84XRR3D18	3DR Right XR	84	118	18	SCE-76P76	72	72
						SCE-76P37	72	33.75
Equals Qty 1 Part#	SCE-84XML2D18	2DR Left XM	84	78.75	18	SCE-76P76	72	72
SCE-84XR5EW18G			84	196.75	18			
Equals Qty 1 Part#	SCE-84XRR3D18G	3DR Right XR	84	118	18	SCE-76P76GALV	72	72
						SCE-76P37GALV	72	33.75
Equals Qty 1 Part#	SCE-84XML2D18G	2DR Left XM	84	78.75	18	SCE-76P76GALV	72	72
SCE-90XR5EW18			90	196.75	18			
Equals Qty 1 Part#	SCE-90XRR3D18	3DR Right XR	90	118	18	SCE-82P76	78	72
						SCE-82P37	78	33.75
Equals Qty 1 Part#	SCE-90XML2D18	2DR Left XM	90	78.75	18	SCE-82P76	78	72
SCE-90XR5EW18G			90	196.75	18			
Equals Qty 1 Part#	SCE-90XRR3D18G	3DR Right XR	90	118	18	SCE-82P76GALV	78	72
						SCE-82P37GALV	78	33.75
Equals Qty 1 Part#	SCE-90XML2D18G	2DR Left XM	90	78.75	18	SCE-82P76GALV	78	72



2DR Left XM

3DR Right XR

SIX-DOOR ENCLOSURES

Enclosure Product Code A2

Sub-Panel (P3)

Catalog No.			Height (A)	Width (B)	Depth (C)	Catalog No.	Panel Height (D)	Panel Width (E)
SCE-84XR6EW18			84	235	18			
Equals Qty 1 Part#	SCE-84XRR2D18	2DR Right XR	84	78.75	18	SCE-76P76	72	72
Equals Qty 1 Part#	SCE-84XMC2D18	2DR Center XM	84	77.5	18	SCE-76P76	72	72
Equals Qty 1 Part#	SCE-84XML2D18	2DR Left XM	84	78.75	18	SCE-76P76	72	72
SCE-84XR6EW18G			84	235	18			
Equals Qty 1 Part#	SCE-84XRR2D18G	2DR Right XR	84	78.75	18	SCE-76P76GALV	72	72
Equals Qty 1 Part#	SCE-84XMC2D18G	2DR Center XM	84	77.5	18	SCE-76P76GALV	72	72
Equals Qty 1 Part#	SCE-84XML2D18G	2DR Left XM	84	78.75	18	SCE-76P76GALV	72	72
SCE-90XR6EW18			90	235	18			
Equals Qty 1 Part#	SCE-90XRR2D18	2DR Right XR	90	78.75	18	SCE-82P76	78	72
Equals Qty 1 Part#	SCE-90XMC2D18	2DR Center XM	90	77.5	18	SCE-82P76	78	72
Equals Qty 1 Part#	SCE-90XML2D18	2DR Left XM	90	78.75	18	SCE-82P76	78	72
SCE-90XR6EW18G			90	235	18			
Equals Qty 1 Part#	SCE-90XRR2D18G	2DR Right XR	90	78.75	18	SCE-82P76GALV	78	72
Equals Qty 1 Part#	SCE-90XMC2D18G	2DR Center XM	90	77.5	18	SCE-82P76GALV	78	72
Equals Qty 1 Part#	SCE-90XML2D18G	2DR Left XM	90	78.75	18	SCE-82P76GALV	78	72



2DR Left XM

2DR Center XM

2DR Right XR

Patent Pending 16/282,485

NOTE: Main door mechanically interlocked to the External Disconnect such that the main enclosure door must be closed and door handle engaged in order to turn disconnect on. Once the main enclosure is closed and disconnect is turned on, the main enclosure is automatically locked when disconnect is turned on, and unlocked when disconnect is turned off. A defeater mechanism on the flange of the main enclosure allows entry with power on by deliberate means.

MULTI-DOOR ENCLOSURES

Application

Designed to house electrical equipment and provide degree of protection from dirt, dust, oil and water. For installation information, consult our installation manual at www.saginawcontrol.com.

Construction

- 0.125" carbon steel.
- Seams continuously welded and ground smooth.
- Heavy duty lifting eyes.
- Reinforced top.
- Steel stiffeners welded to back inside of enclosure.
- Overlapping two-door openings have no center post.
- Black zinc die cast padlocking handle.
- 3-point latching mechanism.
- Concealed hinges.
- Mechanical interlock.
- Far right hand door is main door.
- Panel supports.
- Removable sub-panels are mounted on collar studs.
- Pour in place oil and water resistant gasket.
- Ground stud on door and body.
- Removable print pocket.
- Flange trough collar around all sides of door opening.
- Hole plugs provided to seal holes in bottom of enclosure.
- Provisions for light kit.

Finish

ANSI-61 gray powder coated inside and out. Sub-panels powder coated white.

IS3 Industry Standards

NEMA Type 3R, 12 & Type 13
 UL Listed Type 3R & 12
 CSA Type 3R & 12
 IEC 60529 IP55

***To maintain Type 3R listing, drainage is required. Install equally rated drainage device or drill a 1/8 to 1/4 inch hole in the bottom center of the enclosure, approximately 1 inch from the right, and 1 inch from the left for drainage, use listed rain-tight or wet location hubs. Drip shield over the door is recommended for all outdoor applications.



2DR Left Multi-Door

2DR Right Multi-Door



3DR Left Multi-Door

2DR Right Multi-Door

MULTI-DOOR ENCLOSURES

FOUR-DOOR ENCLOSURES

Enclosure Product Code A2						Sub-Panel (P3)		
Catalog No.			Height (A)	Width (B)	Depth (C)	Catalog No.	Panel Height (D)	Panel Length (E)
SCE-86M4E			86	149	14			
Equals Qty 1 Part#	SCE-86MR2D14	2DR Right Multi-Door	86	74.5	14	SCE-82P76	78	72
Equals Qty 1 Part#	SCE-86ML2D14	2DR Left Multi-Door	86	74.5	14	SCE-82P76	78	72
SCE-86M4E20			86	149	20			
Equals Qty 1 Part#	SCE-86MR2D20	2DR Right Multi-Door	86	74.5	20	SCE-82P76	78	72
Equals Qty 1 Part#	SCE-86ML2D20	2DR Left Multi-Door	86	74.5	20	SCE-82P76	78	72

*Sub-panel included with enclosures. Replacement sub-panels can be ordered.

FIVE-DOOR ENCLOSURES

Enclosure Product Code A2						Sub-Panel (P3)		
Catalog No.			Height (A)	Width (B)	Depth (C)	Catalog No.	Panel Height (D)	Panel Length (E)
SCE-86M5E			86	187	14			
Equals Qty 1 Part#	SCE-86MR2D14	2DR Right Multi-Door	86	74.5	14	SCE-82P76	78	72
Equals Qty 1 Part#	SCE-86ML3D14	3DR Left Multi-Door	86	112.5	14	SCE-82P76	78	72
						SCE-82P37	78	33.75
SCE-86M5E20			86	187	20			
Equals Qty 1 Part#	SCE-86MR2D20	2DR Right Multi-Door	86	74.5	20	SCE-82P76	78	72
Equals Qty 1 Part#	SCE-86ML3D20	3DR Left Multi-Door	86	112.5	20	SCE-82P76	78	72
						SCE-82P37	78	33.75

STAINLESS STEEL HEAVY DUTY FREE-STANDING ENCLOSURES FOR FLANGE-MOUNTED DISCONNECTS

Application

Designed to house electrical equipment and provide degree of protection from dirt, dust, oil and water and to house most standard type disconnects. For installation information, consult our installation manual at www.saginawcontrol.com.

Construction

- 0.104" stainless steel Type 304.
- Seams continuously welded and ground smooth.
- Flange trough collar around all sides of door opening.
- Body stiffeners in large enclosures for extra rigidity.
- Heavy duty lifting eyes anchor into reinforced top.
- Stainless steel concealed hinges.
- Black zinc die cast coinproof/padlocking handle.
- 3-point latching mechanism.
- Black quarter turn latches as required.
- Panel supports.
- Large removable print pockets.
- Pour in place oil and water resistant gasket.
- Removable sub-panels mount on collar studs.
- Defeater on master door requires a screwdriver to open.
- Ground stud on door and body.
- Provisions for light kit.

Disconnect switch (or circuit breaker) and operating mechanism are not furnished with this enclosure.

Finish

#4 brushed finish on all exterior surfaces.

IS6 Industry Standards

NEMA Type 3R, 4, 4X, 12 & Type 13
 UL Listed Type 3R, 4, 4X & 12
 CSA Type 3R, 4, 4X & 12
 IEC 60529 IP66

***To maintain Type 3R listing, drainage is required. Install equally rated drainage device or drill a 1/8 to 1/4 inch hole in the bottom center of the enclosure, approximately 1 inch from the right, and 1 inch from the left for drainage, use listed rain-tight or wet location hubs. Drip shield over the door is recommended for all outdoor applications.



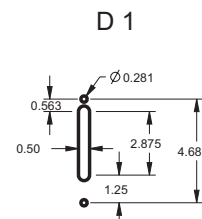
2DR Left XM

2DR Right XM

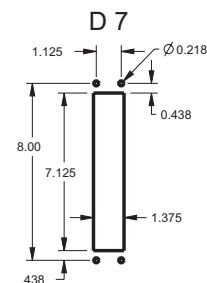
XM ENCLOSURES

* Add the letter U to the end of the part number for enclosures with a universal disconnect cutout.

Standard Disconnect cutout provided



Universal Disconnect cutout



STAINLESS STEEL HEAVY DUTY FREE-STANDING ENCLOSURES FOR FLANGE-MOUNTED DISCONNECTS

FOUR-DOOR ENCLOSURES 304 STAINLESS STEEL

Enclosure Product Code S2

Sub-Panel (P3)

Catalog No.			Height (A)	Width (B)	Depth (C)	Catalog No.	Panel Height (D)	Panel Width (E)
SCE-72XM4EW18SS			72	157.5	18			
Equals Qty 1 Part#	SCE-72XMR2D18SS	S.S. 2DR Right XM	72	78.75	18	SCE-64P76	60	72
Equals Qty 1 Part#	SCE-72XML2D18SS	S.S. 2DR Left XM	72	78.75	18	SCE-64P76	60	72
SCE-84XM4EW18SS			84	157.5	18			
Equals Qty 1 Part#	SCE-84XMR2D18SS	S.S. 2DR Right XM	84	78.75	18	SCE-76P76	72	72
Equals Qty 1 Part#	SCE-84XML2D18SS	S.S. 2DR Left XM	84	78.75	18	SCE-76P76	72	72
SCE-84XM4EW18SSG			84	157.5	18			
Equals Qty 1 Part#	SCE-84XMR2D18SSG	S.S. 2DR Right XM	84	78.75	18	SCE-76P76GALV	72	72
Equals Qty 1 Part#	SCE-84XML2D18SSG	S.S. 2DR Left XM	84	78.75	18	SCE-76P76GALV	72	72
SCE-84XM4EW24SS			84	157.5	24			
Equals Qty 1 Part#	SCE-84XMR2D24SS	S.S. 2DR Right XM	84	78.75	24	SCE-76P76	72	72
Equals Qty 1 Part#	SCE-84XML2D24SS	S.S. 2DR Left XM	84	78.75	24	SCE-76P76	72	72
SCE-84XM4EW24SSG			84	157.5	24			
Equals Qty 1 Part#	SCE-84XMR2D24SSG	S.S. 2DR Right XM	84	78.75	24	SCE-76P76GALV	72	72
Equals Qty 1 Part#	SCE-84XML2D24SSG	S.S. 2DR Left XM	84	78.75	24	SCE-76P76GALV	72	72
SCE-90XM4EW18SS			90	157.5	18			
Equals Qty 1 Part#	SCE-90XMR2D18SS	S.S. 2DR Right XM	90	78.75	18	SCE-82P76	78	72
Equals Qty 1 Part#	SCE-90XML2D18SS	S.S. 2DR Left XM	90	78.75	18	SCE-82P76	78	72
SCE-90XM4EW24SS			90	157.5	24			
Equals Qty 1 Part#	SCE-90XMR2D24SS	S.S. 2DR Right XM	90	78.75	24	SCE-82P76	78	72
Equals Qty 1 Part#	SCE-90XML2D24SS	S.S. 2DR Left XM	90	78.75	24	SCE-82P76	78	72
SCE-90XM4EW24SSU			90	157.5	24			
Equals Qty 1 Part#	SCE-90XMR2D24SSU	S.S. 2DR Right XM	90	78.75	24	SCE-82P76	78	72
Equals Qty 1 Part#	SCE-90XML2D24SSU	S.S. 2DR Left XM	90	78.75	24	SCE-82P76	78	72

**Sub-panel included with enclosure. Replacement sub-panels can be ordered.

FIVE-DOOR ENCLOSURES 304 STAINLESS STEEL

Enclosure Product Code S2

Catalog No.			Height (A)	Width (B)	Depth (C)	Catalog No.	Panel Height (D)	Panel Width (E)
SCE-84XM5EW18SS			84	196.75	18			
Equals Qty 1 Part#	SCE-84XMR3D18SS	S.S. 3DR Right XM	84	118	18	SCE-76P76	72	72
						SCE-76P37	72	33.75
Equals Qty 1 Part#	SCE-84XML2D18SS	S.S. 2DR Left XM	84	78.75	18	SCE-76P76	72	72
SCE-84XM5EW24SS			84	196.75	24			
Equals Qty 1 Part#	SCE-84XMR3D24SS	S.S. 3DR Right XM	84	118	24	SCE-76P76	72	72
						SCE-76P37	72	33.75
Equals Qty 1 Part#	SCE-84XML2D24SS	S.S. 2DR Left XM	84	78.75	24	SCE-76P76	72	72
SCE-90XM5EW18SS			90	196.75	18			
Equals Qty 1 Part#	SCE-90XMR3D18SS	S.S. 3DR Right XM	90	118	18	SCE-82P76	78	72
						SCE-82P37	78	33.75
Equals Qty 1 Part#	SCE-90XML2D18SS	S.S. 2DR Left XM	90	78.75	18	SCE-82P76	78	72
SCE-90XM5EW24SS			90	196.75	24			
Equals Qty 1 Part#	SCE-90XMR3D24SS	S.S. 3DR Right XM	90	118	24	SCE-82P76	78	72
						SCE-82P37	78	33.75
Equals Qty 1 Part#	SCE-90XML2D24SS	S.S. 2DR Left XM	90	78.75	24	SCE-82P76	78	72

SIX-DOOR ENCLOSURES 304 STAINLESS STEEL

Enclosure Product Code S2

Catalog No.			Height (A)	Width (B)	Depth (C)	Catalog No.	Panel Height (D)	Panel Width (E)
SCE-84XM6EW24SS			84	235	24			
Equals Qty 1 Part#	SCE-84XMR2D24SS	S.S. 2DR Right XM	84	78.75	24	SCE-76P76	72	72
Equals Qty 1 Part#	SCE-84XMC2D24SS	S.S. 2DR Center XM	84	77.5	24	SCE-76P76	72	72
Equals Qty 1 Part#	SCE-84XML2D24SS	S.S. 2DR Left XM	84	78.75	24	SCE-76P76	72	72
SCE-84XM6EW24SSG			84	235	24			
Equals Qty 1 Part#	SCE-84XMR2D24SSG	S.S. 2DR Right XM	84	78.75	24	SCE-76P76GALV	72	72
Equals Qty 1 Part#	SCE-84XMC2D24SSG	S.S. 2DR Center XM	84	77.5	24	SCE-76P76GALV	72	72
Equals Qty 1 Part#	SCE-84XML2D24SSG	S.S. 2DR Left XM	84	78.75	24	SCE-76P76GALV	72	72
SCE-90XM6EW24SS			90	235	24			
Equals Qty 1 Part#	SCE-90XMR2D24SS	S.S. 2DR Right XM	90	78.75	24	SCE-82P76	78	72
Equals Qty 1 Part#	SCE-90XMC2D24SS	S.S. 2DR Center XM	90	77.5	24	SCE-82P76	78	72
Equals Qty 1 Part#	SCE-90XML2D24SS	S.S. 2DR Left XM	90	78.75	24	SCE-82P76	78	72



2DR Left XM

3DR Right XM



2DR Left XM

2DR Center XM

2DR Right XM