

IMS SINGLE-DOOR ENCLOSURES ACCESSORY SELECTION GUIDE

Part Number	Description	SCE-S180605LG	SCE-S180606LG	SCE-S180805LG	SCE-S180806LG	SCE-S181005LG	SCE-S181006LG	SCE-S200605LG	SCE-S200606LG	SCE-S200805LG	SCE-S200806LG	SCE-S201005LG	SCE-S201006LG
SCE-BP1805LG	Barrier Plate	•		•		•							
SCE-BP1806LG	Barrier Plate		•		•		•						
SCE-BP2005LG	Barrier Plate							•		•		•	
SCE-BP2006LG	Barrier Plate								•			•	•
SCE-EP1805LG	End Plate	•		•		•							
SCE-EP1806LG	End Plate		•		•		•						
SCE-EP2005LG	End Plate							•		•		•	
SCE-EP2006LG	End Plate								•			•	•
SCE-GP08	IMS Gland Plate	•	•					•	•				
SCE-GP16	IMS Gland Plate			•	•	•	•			•	•	•	•
SCE-SGP08	IMS Sliding Gland Plate	•	•					•	•				
SCE-SGP16	IMS Sliding Gland Plate			•	•	•	•			•	•	•	•
SCE-P010605	Single-Door Plinth Base	•						•					
SCE-P010606	Single-Door Plinth Base		•						•				
SCE-P010805	Single-Door Plinth Base			•						•			
SCE-P010806	Single-Door Plinth Base				•						•		
SCE-P011005	Single-Door Plinth Base					•						•	
SCE-P011006	Single-Door Plinth Base						•						•
SCE-SP1806G	Single-Door Sub-Panel (Galvanized)	•	•										
SCE-SP1808G	Single-Door Sub-Panel (Galvanized)			•	•								
SCE-SP1810G	Single-Door Sub-Panel (Galvanized)					•	•						
SCE-SP2006G	Single-Door Sub-Panel (Galvanized)							•	•				
SCE-SP2008G	Single-Door Sub-Panel (Galvanized)									•	•		
SCE-SP2010G	Single-Door Sub-Panel (Galvanized)											•	•
SCE-FP18G	Filler Plates (Galvanized)	•	•	•	•	•	•						
SCE-FP20G	Filler Plates (Galvanized)							•	•	•	•	•	•
SCE-SPMP05	Sub-Panel Mounting Strap	•		•		•		•		•		•	
SCE-SPMP06	Sub-Panel Mounting Strap		•		•		•			•		•	•
SCE-FMA	Floor Mounting Angles	•	•	•	•	•	•	•	•	•	•	•	•
SCE-IMSBK	IMS Bolt Pack	•	•	•	•	•	•	•	•	•	•	•	•
SCE-DF1806	Dead Front/Swing Panel	•	•										
SCE-DF1808	Dead Front/Swing Panel			•	•								
SCE-DF1810	Dead Front/Swing Panel					•	•						
SCE-DF2006	Dead Front/Swing Panel							•	•				
SCE-DF2008	Dead Front/Swing Panel									•	•		
SCE-DF2010	Dead Front/Swing Panel											•	•
SCE-URA18	U - Shape Rack Angles	•	•	•	•	•	•						
SCE-URA20	U - Shape Rack Angles							•	•	•	•	•	•
SCE-LRA18	L - Shape Rack Angles	•	•	•	•	•	•						
SCE-LRA20	L - Shape Rack Angles							•	•	•	•	•	•
SCE-SDMI	IMS Slave Door Mechanical Interlock Kit	•	•	•	•	•	•	•	•	•	•	•	•
SCE-MDMI	IMS Main Single-Door Interlock Kit	•	•	•	•	•	•	•	•	•	•	•	•
SCE-VMG18	Vertical Mounting Grid	•	•	•	•	•	•						
SCE-VMG20	Vertical Mounting Grid							•	•	•	•	•	•
SCE-TEMG	Top, End Mounting Grid	•	•	•	•	•	•	•	•	•	•	•	•
SCE-EMG	End Mounting Grid	•	•	•	•	•	•	•	•	•	•	•	•
SCE-FMG06	Filler Mounting Grid	•	•					•	•				
SCE-FMG08	Filler Mounting Grid			•	•					•	•		
SCE-FMG10	Filler Mounting Grid					•	•					•	•
SCE-20POS	Pullout Shelf				•		•					•	•
SCE-22VEPOS	Vented Pullout Shelf				•		•					•	•
SCE-20STS	Stationary Shelf				•		•					•	•
SCE-20VESTS	Vented Stationary Shelf				•		•					•	•

IMS TWO-DOOR ENCLOSURES ACCESSORY SELECTION GUIDE

Part Number	Description	SCE-T181205LG	SCE-T181206LG	SCE-T181605LG	SCE-T181606LG	SCE-T201205LG	SCE-T201206LG	SCE-T201605LG	SCE-T201606LG
SCE-BP1805LG	Barrier Plate	•		•					
SCE-BP1806LG	Barrier Plate		•		•				
SCE-BP2005LG	Barrier Plate					•		•	
SCE-BP2006LG	Barrier Plate						•		•
SCE-EP1805LG	End Plate	•		•					
SCE-EP1806LG	End Plate		•		•				
SCE-EP2005LG	End Plate					•		•	
SCE-EP2006LG	End Plate						•		•
SCE-P011205	Two-Door Plinth Base	•				•			
SCE-GP08	IMS Gland Plate	•	•			•	•		
SCE-GP16	IMS Gland Plate			•	•			•	•
SCE-SGP08	IMS Sliding Gland Plate	•	•			•	•		
SCE-SGP16	IMS Sliding Gland Plate			•	•			•	•
SCE-P011206	Single-Door Plinth Base		•				•		
SCE-P011605	Two-Door Plinth Base			•				•	
SCE-P011606	Two-Door Plinth Base				•				•
SCE-SP1806G	Single-Door Sub-Panel (Galvanized)	•	•						
SCE-SP1808G	Single-Door Sub-Panel (Galvanized)			•	•				
SCE-SP2006G	Single-Door Sub-Panel (Galvanized)					•	•		
SCE-SP2008G	Single-Door Sub-Panel (Galvanized)							•	•
SCE-SP1812G	Two-Door Sub-Panel (Galvanized)	•	•						
SCE-SP1816G	Two-Door Sub-Panel (Galvanized)			•	•				
SCE-SP2012G	Two-Door Sub-Panel (Galvanized)					•	•		
SCE-SP2016G	Two-Door Sub-Panel (Galvanized)							•	•
SCE-FP18G	Filler Plates (Galvanized)	•	•	•	•				
SCE-FP20G	Filler Plates (Galvanized)					•	•	•	•
SCE-SPMP05	Sub-Panel Mounting Strap	•		•		•		•	
SCE-SPMP06	Sub-Panel Mounting Strap		•		•		•		•
SCE-FMA	Floor Mounting Angles	•	•	•	•	•	•	•	•
SCE-IMSBK	IMS Bolt Pack	•	•	•	•	•	•	•	•
SCE-DF1806	Dead Front/Swing Panel	•	•						
SCE-DF1808	Dead Front/Swing Panel			•	•				
SCE-DF2006	Dead Front/Swing Panel					•	•		
SCE-DF2008	Dead Front/Swing Panel							•	•
SCE-URA18	U - Shape Rack Angles	•	•	•	•				
SCE-URA20	U - Shape Rack Angles					•	•	•	•
SCE-LRA18	L - Shape Rack Angles	•	•	•	•				
SCE-LRA20	L - Shape Rack Angles					•	•	•	•
SCE-SDMI	IMS Slave Door Mechanical Interlock Kit	•	•	•	•	•	•	•	•
SCE-MDMI	IMS Main Single-Door Interlock Kit	•	•	•	•	•	•	•	•
SCE-VMG18	Vertical Mounting Grid	•	•	•	•				
SCE-VMG20	Vertical Mounting Grid					•	•	•	•
SCE-TEMG	Top, End Mounting Grid	•	•	•	•	•	•	•	•
SCE-EMG	End Mounting Grid	•	•	•	•	•	•	•	•
SCE-FMG06	Filler Mounting Grid	•	•			•	•		
SCE-FMG08	Filler Mounting Grid			•	•			•	•
SCE-FMG	Center Filler Mounting Grid	•	•	•	•	•	•	•	•
SCE-20POS	Pullout Shelf		•		•		•		•
SCE-22VEPOS	Vented Pullout Shelf		•		•		•		•
SCE-20STS	Stationary Shelf		•		•		•		•
SCE-20VESTS	Vented Stationary Shelf		•		•		•		•

IMS SINGLE-DOOR ENCLOSURES WITH SLAVE DOOR DISCONNECT - ACCESSORY SELECTION GUIDE

Part Number	Description	SCE-SD180805LG	SCE-SD180806LG	SCE-SD181005LG	SCE-SD181006LG	SCE-SD181205LG	SCE-SD181206LG	SCE-SD200805LG	SCE-SD200806LG	SCE-SD201005LG	SCE-SD201006LG	SCE-SD201205LG	SCE-SD201206LG
SCE-BP1805LG	Barrier Plate	•		•		•							
SCE-BP1806LG	Barrier Plate		•		•		•						
SCE-BP2005LG	Barrier Plate							•		•		•	
SCE-BP2006LG	Barrier Plate								•		•		•
SCE-EP1805LG	End Plate	•		•		•							
SCE-EP1806LG	End Plate		•		•		•						
SCE-EP2005LG	End Plate							•		•		•	
SCE-EP2006LG	End Plate								•		•		•
SCE-GP08	IMS Gland Plate					•	•					•	•
SCE-GP16	IMS Gland Plate	•	•	•	•			•	•	•	•	•	•
SCE-SGP08	IMS Sliding Gland Plate					•	•					•	•
SCE-SGP16	IMS Sliding Gland Plate	•	•	•	•			•	•	•	•	•	•
SCE-P010805	Single-Door Plinth Base	•						•					
SCE-P010806	Single-Door Plinth Base		•						•				
SCE-P011005	Single-Door Plinth Base			•						•			
SCE-P011006	Single-Door Plinth Base				•						•		
SCE-P011205	Two-Door Plinth Base					•						•	
SCE-P011206	Two-Door Plinth Base						•						•
SCE-SP1806G	Single-Door Sub-Panel (Galvanized)					•	•						
SCE-SP1808G	Single-Door Sub-Panel (Galvanized)	•	•										
SCE-SP1810G	Single-Door Sub-Panel (Galvanized)			•	•								
SCE-SP1812G	Two-Door Sub-Panel (Galvanized)					•	•						
SCE-SP2006G	Single-Door Sub-Panel (Galvanized)											•	•
SCE-SP2008G	Single-Door Sub-Panel (Galvanized)							•	•				
SCE-SP2010G	Single-Door Sub-Panel (Galvanized)									•	•		
SCE-SP2012G	Two-Door Sub-Panel (Galvanized)											•	•
SCE-FP18G	Filler Plates (Galvanized)	•	•	•	•	•	•						
SCE-FP20G	Filler Plates (Galvanized)							•	•	•	•	•	•
SCE-SPMP05	Sub-Panel Mounting Strap	•		•		•		•		•		•	
SCE-SPMP06	Sub-Panel Mounting Strap		•		•		•		•		•		•
SCE-FMA	Floor Mounting Angles	•	•	•	•	•	•	•	•	•	•	•	•
SCE-IMSBK	IMS Bolt Pack	•	•	•	•	•	•	•	•	•	•	•	•
SCE-DF1806	Dead Front/Swing Panel					•	•						
SCE-DF1808	Dead Front/Swing Panel	•	•										
SCE-DF1810	Dead Front/Swing Panel			•	•								
SCE-DF2006	Dead Front/Swing Panel											•	•
SCE-DF2008	Dead Front/Swing Panel							•	•				
SCE-DF2010	Dead Front/Swing Panel									•	•		
SCE-URA18	U - Shape Rack Angles	•	•	•	•	•	•						
SCE-URA20	U - Shape Rack Angles							•	•	•	•	•	•
SCE-LRA18	L - Shape Rack Angles	•	•	•	•	•	•						
SCE-LRA20	L - Shape Rack Angles							•	•	•	•	•	•
SCE-SDMI	IMS Slave Door Mechanical Interlock Kit	•	•	•	•	•	•	•	•	•	•	•	•
SCE-MDMI	IMS Main Single-Door Interlock Kit	•	•	•	•	•	•	•	•	•	•	•	•
SCE-VMG18	Vertical Mounting Grid	•	•	•	•	•	•						
SCE-VMG20	Vertical Mounting Grid							•	•	•	•	•	•
SCE-TEMG	Top, End Mounting Grid	•	•	•	•	•	•	•	•	•	•	•	•
SCE-EMG	End Mounting Grid	•	•	•	•	•	•	•	•	•	•	•	•
SCE-FMG06	Filler Mounting Grid					•	•					•	•
SCE-FMG08	Filler Mounting Grid	•	•					•	•				
SCE-FMG10	Filler Mounting Grid			•	•					•	•		
SCE-FMG	Center Filler Mounting Grid					•	•					•	•
SCE-20POS	Pullout Shelf		•		•			•		•		•	•
SCE-22VEPOS	Vented Pullout Shelf		•		•			•		•		•	•
SCE-20STS	Stationary Shelf		•		•			•		•		•	•
SCE-20VESTS	Vented Stationary Shelf		•		•			•		•		•	•

IMS TWO-DOOR ENCLOSURES WITH SLAVE DOOR DISCONNECT - ACCESSORY SELECTION GUIDE

Part Number	Description	SCE-TD181605LG	SCE-TD181606LG	SCE-TD181805LG	SCE-TD181806LG	SCE-TD201605LG	SCE-TD201606LG	SCE-TD201805LG	SCE-TD201806LG
SCE-BP1805LG	Barrier Plate	•		•					
SCE-BP1806LG	Barrier Plate		•		•				
SCE-BP2005LG	Barrier Plate					•		•	
SCE-BP2006LG	Barrier Plate						•		•
SCE-EP1805LG	End Plate	•		•					
SCE-EP1806LG	End Plate		•		•				
SCE-EP2005LG	End Plate					•		•	
SCE-EP2006LG	End Plate						•		•
SCE-GP16	IMS Gland Plate	•	•	•	•	•	•	•	•
SCE-SGP16	IMS Sliding Gland Plate	•	•	•	•	•	•	•	•
SCE-P011605	Two-Door Plinth Base	•				•			
SCE-P011606	Two-Door Plinth Base		•				•		
SCE-P011805	Two-Door Plinth Base			•				•	
SCE-P011806	Two-Door Plinth Base				•				•
SCE-SP1808G	Single-Door Sub-Panel (Galvanized)	•	•						
SCE-SP1809G	Single-Door Sub-Panel (Galvanized)			•	•				
SCE-SP2008G	Single-Door Sub-Panel (Galvanized)					•	•		
SCE-SP2009G	Single-Door Sub-Panel (Galvanized)							•	•
SCE-SP1816G	Two-Door Sub-Panel (Galvanized)	•	•						
SCE-SP1818G	Two-Door Sub-Panel (Galvanized)			•	•				
SCE-SP2016G	Two-Door Sub-Panel (Galvanized)					•	•		
SCE-SP2018G	Two-Door Sub-Panel (Galvanized)							•	•
SCE-FP18G	Filler Plates (Galvanized)	•	•	•	•				
SCE-FP20G	Filler Plates (Galvanized)					•	•	•	•
SCE-SPMP05	Sub-Panel Mounting Strap	•		•		•		•	
SCE-SPMP06	Sub-Panel Mounting Strap		•		•		•		•
SCE-FMA	Floor Mounting Angles	•	•	•	•	•	•	•	•
SCE-IMSBK	IMS Bolt Pack	•	•	•	•	•	•	•	•
SCE-DF1808	Dead Front/Swing Panel	•	•						
SCE-DF1809	Dead Front/Swing Panel			•	•				
SCE-DF2008	Dead Front/Swing Panel					•	•		
SCE-DF2009	Dead Front/Swing Panel							•	•
SCE-URA18	U - Shape Rack Angles	•	•	•	•				
SCE-URA20	U - Shape Rack Angles					•	•	•	•
SCE-LRA18	L - Shape Rack Angles	•	•	•	•				
SCE-LRA20	L - Shape Rack Angles					•	•	•	•
SCE-MDM1	IMS Main Single-Door Interlock Kit	•	•	•	•	•	•	•	•
SCE-MDM2	IMS Main Two-Door Interlock Kit	•	•	•	•	•	•	•	•
SCE-VMG18	Vertical Mounting Grid	•	•	•	•				
SCE-VMG20	Vertical Mounting Grid					•	•	•	•
SCE-TEMG	Top, End Mounting Grid	•	•	•	•	•	•	•	•
SCE-EMG	End Mounting Grid	•	•	•	•	•	•	•	•
SCE-FMG08	Filler Mounting Grid	•	•			•	•		
SCE-FMG09	Filler Mounting Grid			•	•			•	•
SCE-FMG	Center Filler Mounting Grid	•	•	•	•	•	•	•	•
SCE-20POS	Pullout Shelf		•		•		•		•
SCE-22VEPOS	Vented Pullout Shelf		•		•		•		•
SCE-20STS	Stationary Shelf		•		•		•		•
SCE-20VESTS	Vented Stationary Shelf		•		•		•		•

INDUSTRIAL MODULAR SYSTEM (IMS) ACCESSORIES

END PLATE

Designed to provide a sealed cover for the open end of IMS enclosures. Provides additional wiring space along the side of the enclosure. Gasket and mounting hardware is included. Made of heavy gauge steel and powder coated RAL 7035 Gray.

Catalog No.	Height (A)	Used With Enclosure Ref. mm Height	Width (B)	Used With Enclosure Ref. mm Depth	Product Code
SCE-EP1805LG	70.62	1800	17.75	500	P5
SCE-EP1806LG	70.62	1800	21.75	600	P5
SCE-EP2005LG	78.48	2000	17.75	500	P5
SCE-EP2006LG	78.48	2000	21.75	600	P5



PLINTH BASE

Designed to install under an enclosure to provide space for cables to enter from below and raise the enclosure up off the floor. Plinth bases are stackable to acquire desired height off the floor. Black textured powder coat finish.

Catalog No.	Height (A)	Used With Enclosure Ref. mm Height	Width (B)	Used With Enclosure Ref. mm Width	Depth (C)	Used With Enclosure Ref. mm Depth	Product Code
Single-Door Plinth Base							
SCE-P010605	3.94	100	23.62	600	18.00	500	P5
SCE-P010606	3.94	100	23.62	600	22.00	600	P5
SCE-P010805	3.94	100	31.50	800	18.00	500	P5
SCE-P010806	3.94	100	31.50	800	22.00	600	P5
SCE-P011005	3.94	100	39.37	1000	18.00	500	P5
SCE-P011006	3.94	100	39.37	1000	22.00	600	P5
Two-Door Plinth Base							
SCE-P011205	3.94	100	47.24	1200	18.00	500	P5
SCE-P011206	3.94	100	47.24	1200	22.00	600	P5
SCE-P011605	3.94	100	62.99	1600	18.00	500	P5
SCE-P011606	3.94	100	62.99	1600	22.00	600	P5
SCE-P011805	3.94	100	70.87	1800	18.00	500	P5
SCE-P011806	3.94	100	70.87	1800	22.00	600	P5

BARRIER PLATE

Designed to serve as a barrier between two IMS enclosure sections. Mounting holes. Gasket is included. Made of heavy gauge steel and powder coated RAL 7035 Gray. Bolt Pack SCE-IMSBK sold separately.

Catalog No.	Height (A)	Used With Enclosure Ref. mm Height	Width (B)	Used With Enclosure Ref. mm Depth	Product Code
SCE-BP1805LG	70.37	1800	17.50	500	P5
SCE-BP1806LG	70.37	1800	21.50	600	P5
SCE-BP2005LG	78.24	2000	17.50	500	P5
SCE-BP2006LG	78.24	2000	21.50	600	P5

INDUSTRIAL MODULAR SYSTEM (IMS) ACCESSORIES

SINGLE-DOOR GALVANIZED SUB-PANEL

Catalog No.	Height (A)	Ref. mm Height (A)	Used With Enclosure Ref. mm Height	Width (B)	Ref. mm Width (B)	Used With Enclosure Ref. mm Width	Product Code
SCE-SP1806G	66.44	1687.50	1800	19.69	500	600 & 1200	P5
SCE-SP1808G	66.44	1687.50	1800	27.56	700	800 & 1600	P5
SCE-SP1809G	66.44	1687.50	1800	31.50	800	900 & 1800	P5
SCE-SP1810G	66.44	1687.50	1800	35.43	900	1000	P5
SCE-SP2006G	74.31	1887.50	2000	19.69	500	600 & 1200	P5
SCE-SP2008G	74.31	1887.50	2000	27.56	700	800 & 1600	P5
SCE-SP2009G	74.31	1887.50	2000	31.50	800	900 & 1800	P5
SCE-SP2010G	74.31	1887.50	2000	35.43	900	1000	P5

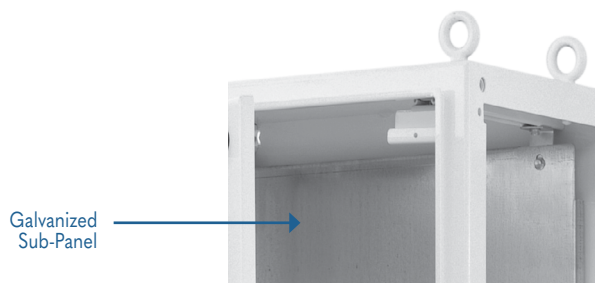
GALVANIZED SUB-PANEL

Sub-panels are constructed from galvanized steel for direct bonding of electrical components.

TWO-DOOR GALVANIZED SUB-PANEL

Catalog No.	Height (A)	Ref. mm Height (A)	Used With Enclosure Ref. mm Height	Width (B)	Ref. mm Width (B)	2 Piece Sub-Panel	Used With Enclosure Ref. mm Width	Product Code
SCE-SP1812G	66.44	1687.50	1800	43.31	1100		1200	P5
SCE-SP1816G	66.44	1687.50	1800	59.06	1500	*	1600	P5
SCE-SP1818G	66.44	1687.50	1800	66.93	1700	*	1800	P5
SCE-SP2012G	74.31	1887.50	2000	43.31	1100		1200	P5
SCE-SP2016G	74.31	1887.50	2000	59.06	1500	*	1600	P5
SCE-SP2018G	74.31	1887.50	2000	66.93	1700	*	1800	P5

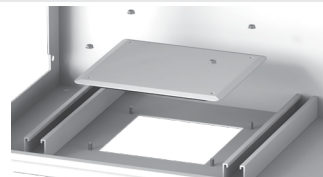
* 2 piece sub-panels are manufactured as two separate pieces and designed to be bolted together. Bolt pack included.



Catalog No.	Height (A)	Ref. mm Height (A)	Width (B)	Ref. mm Width (B)	Used With Enclosure Ref. mm Width	Product Code
SCE-GP08	10.00	254	11.00	279	600, 1200	P2
SCE-GP16	10.00	254	19.00	483	800, 1000, 1600, 1800	P2

GLAND PLATES

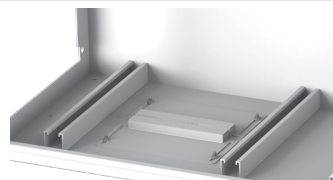
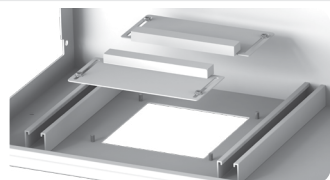
Gland plates designed for use in our IMS enclosures to allow for easy removal of the plate for installation of cable entry cutouts into enclosure. Includes seamless oil and water resistant gasket to maintain the environmental rating of the enclosure. Powder coated RAL 7035.



Catalog No.	Height (A)	Ref. mm Height (A)	Width (B)	Ref. mm Width (B)	Used With Enclosure Ref. mm Width	Product Code
SCE-SGP08	10.00	254	11.00	279	600, 1200	P2
SCE-SGP16	10.00	254	19.00	483	800, 1000, 1600, 1800	P2

SLIDING GLAND PLATE

Sliding gland plates are designed to allow for easy cable entry into enclosure. Allows 6 inch of adjustable opening for cable entry and a 1 inch foam lined edge gasket maintains a tight seal. Powder coated RAL 7035.

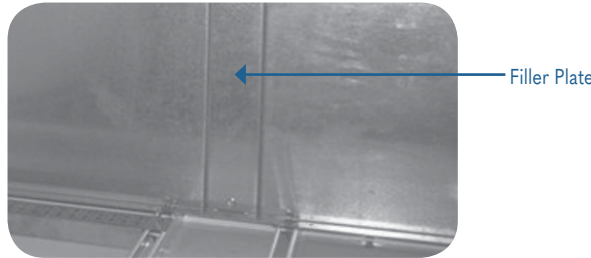


INDUSTRIAL MODULAR SYSTEM (IMS) ACCESSORIES

GALVANIZED FILLER PLATES

Designed to provide additional mounting surface between sub-panels or sections of a modular enclosure. Slotted mounting holes allow flexible installation.

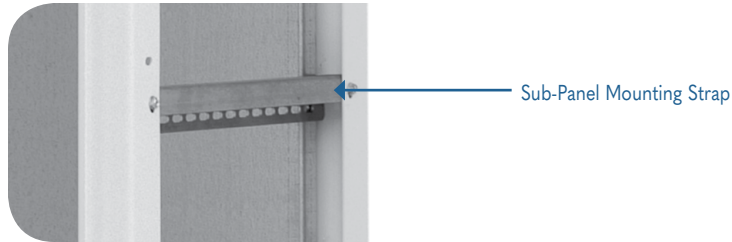
Catalog No.	Height (A)	Ref. mm Height (A)	Width (B)	Ref. mm Width (B)	Used With Enclosure Ref. mm Width	Product Code
SCE-FP18G	66.44	1687.5	3.88	98.5	1800	P5
SCE-FP20G	74.31	1887.5	3.88	98.5	2000	P5



SUB-PANEL MOUNTING STRAP

Designed to provide additional mounting to the center of sub-panels on the right and left sides of a modular enclosure. Made of galvanized material.

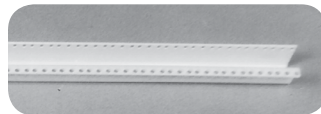
Catalog No.	Length (C)	Ref. mm Length (C)	Used With Enclosure Ref. mm Depth	Parts Per Kit	Product Code
SCE-SPMP05	16.75	425.45	500	2	P5
SCE-SPMP06	20.75	527.05	600	2	P5



U-SHAPE RACK ANGLES

Designed for use in IMS enclosure to provide provisions for the installation of rack mounted equipment and allow position at the desired rack mounting width and depth. Made of galvanized material and powder coated white.

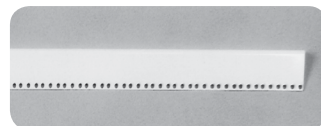
Catalog No.	Height (A)	Ref. mm Height (A)	Used With Enclosure Ref. mm Height	Qty Per Kit	Product Code
SCE-URA18	66.94	1689	1800	2	P5
SCE-URA20	74.94	1867	2000	2	P5



L-SHAPE RACK ANGLES

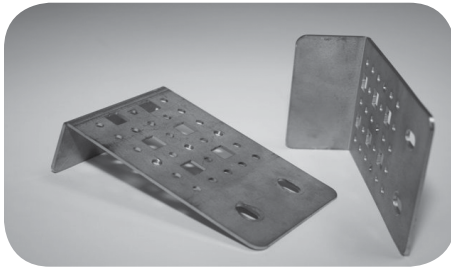
Designed for use in IMS enclosure to provide provisions for the installation of rack mounted equipment and allow position at the desired rack mounting width and depth. Made of galvanized material and powder coated white.

Catalog No.	Height (A)	Ref. mm Height (A)	Used With Enclosure Ref. mm Height	Qty Per Kit	Product Code
SCE-LRA18	66.50	1689	1800	2	P5
SCE-LRA20	75.00	1867	2000	2	P5



INDUSTRIAL MODULAR SYSTEM (IMS) ACCESSORIES

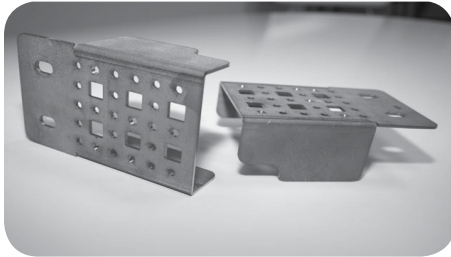
Catalog No.	Parts Per Kit	Product Code
SCE-TEMG	2	P5



TOP END MOUNTING GRID

Designed to provide a flexible extension to the mounting system. Top-end grid to be installed in the top of the enclosure between the mounting channel and the side of the enclosure. Made of galvanized material.

Catalog No.	Parts Per Kit	Product Code
SCE-EMG	2	P5



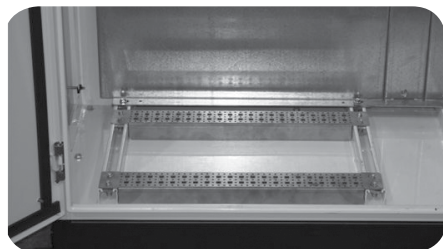
END MOUNTING GRID

Designed to provide a flexible extension to the mounting system. End grid to be attached to the mounting channel in the top or bottom of the enclosure. Made of galvanized material.

Catalog No.	Length (C)	Ref. mm Length (C)	Used With Enclosure Ref. mm Width	Qty Per Kit	Product Code
SCE-FMG05	12.80	325	500	2	P5
SCE-FMG06	16.73	425	600 & 1200	2	P5
SCE-FMG08	24.61	625	800 & 1600	2	P5
SCE-FMG09	28.54	725	900 & 1800	2	P5
SCE-FMG10	32.47	825	1000	2	P5
SCE-FMG	10.51	267	1200, 1600 & 1800	2	P5

FILLER MOUNTING GRID

Designed to provide a flexible extension to the internal mounting system. Filler grid to be installed between the mounting channels and top or bottom of the modular enclosure. Made of galvanized material.



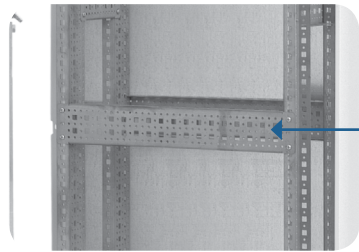
Filler Mounting Grid

INDUSTRIAL MODULAR SYSTEM (IMS) ACCESSORIES

HORIZONTAL MOUNTING GRID

Designed to provide a horizontal extension of the frame holes in the sides of the IMS enclosure. Sold in sets of two with mounting hardware included. Made of galvanized material.

Catalog No.	Width (B)	Ref. mm Width (B)	Qty Per Kit	Product Code
SCE-HMG175	6.89	175	2	P5
SCE-HMG225	8.88	225	2	P5
SCE-HMG300	11.81	300	2	P5
SCE-HMG400	15.75	400	2	P5
SCE-HMG475	18.70	475	2	P5
SCE-HMG575	22.62	575	2	P5
SCE-HMG675	26.56	675	2	P5
SCE-HMG775	30.50	775	2	P5

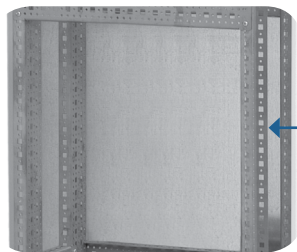


Horizontal Mounting Grid

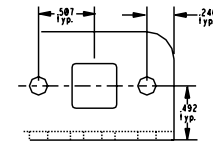
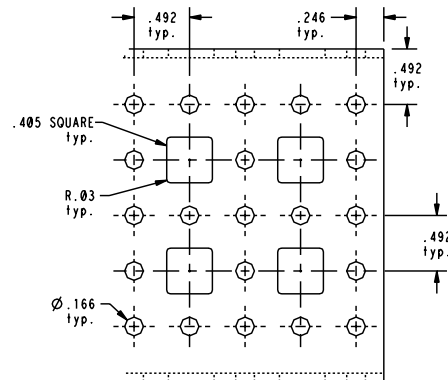
VERTICAL MOUNTING GRID

Designed to provide a vertical extension from top to bottom of the IMS enclosure. Sold in sets of two and mounting hardware is included. Made of galvanized material.

Catalog No.	Height (A)	Used With Ref. mm Height (A)	Enclosure Ref. mm Height	Qty Per Kit	Product Code
SCE-VMG18	66.93	1687.50	1800	2	P5
SCE-VMG20	74.8	1887.50	2000	2	P5



Vertical Mounting Grid



INDUSTRIAL MODULAR SYSTEM (IMS) ACCESSORIES

GRID MOUNTING ANGLE

Designed to provide flexible mounting of horizontal and vertical mounting grids. Made of galvanized material.

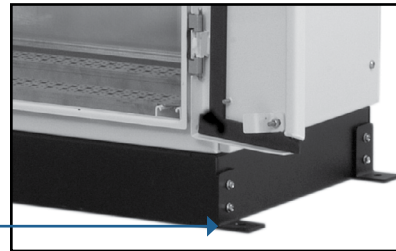


Catalog No.	Parts Per Kit	Product Code
SCE-GMA	4	P5

FLOOR MOUNTING ANGLES

Designed for use with IMS enclosures when the enclosure must be secured to the floor. Kit contains four floor mounting angles and mounting hardware. Black textured powder coat finish.

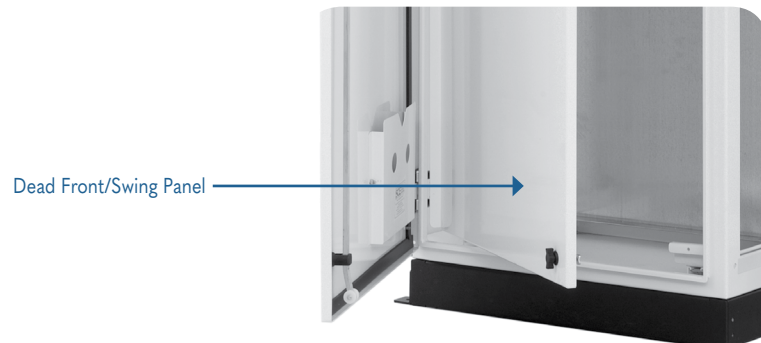
Catalog No.	Parts Per Kit	Product Code
SCE-FMA	4	P5



DEAD FRONT/SWING PANEL

Designed for installation into IMS enclosures, to be installed in the front of an enclosure and to swing out of the enclosure. Kit consists of heavy gauge brackets, hinges, and mounting hardware. Installed by detaching door hinge from enclosure and installing swing out panel kit to the existing holes and hinge supplied with the enclosure. Made of heavy gauge steel and powder coated white.

Catalog No.	Height (A)	Ref. mm Height (A)	Width (B)	Ref. mm Width (B)	Used With Enclosure Ref. mm Height	Used With Enclosure Ref. mm Width	Product Code
SCE-DF1806	65.88	1675.35	19.38	492.25	1800	600 & 1200	P5
SCE-DF1808	65.88	1675.35	27.25	692.15	1800	800 & 1600	P5
SCE-DF1809	65.88	1675.35	31.25	793.75	1800	1800	P5
SCE-DF1810	65.88	1675.35	35.13	892.30	1800	1000	P5
SCE-DF2006	73.75	1873.25	19.38	492.25	2000	600 & 1200	P5
SCE-DF2008	73.75	1873.25	27.25	692.15	2000	800 & 1600	P5
SCE-DF2009	73.75	1873.25	31.25	793.75	2000	1800	P5
SCE-DF2010	73.75	1873.25	35.13	892.30	2000	1000	P5



INDUSTRIAL MODULAR SYSTEM (IMS) ACCESSORIES

NUT RETAINER

Designed to install in the square holes provided in mounting grids.

Catalog No.	Size	Qty Per Kit	Product Code
SCE-NR1032	10-32	20	P5
SCE-NR1420	1/4 - 20	20	P5

CHANNEL NUTS

Designed for use in IMS enclosures to allow mounting of additional equipment.

Catalog No.	Size	Qty Per Kit	Product Code
SCE-PS1420	1/4 - 20	20	P2
SCE-PS51618CN	5/16 - 18	20	P2



MAIN SINGLE-DOOR MECHANICAL INTERLOCK

Interlock kit designed for use on the main door of IMS Single-Door enclosures.

Catalog No.	Product Code
SCE-MDMI	P5



MAIN TWO-DOOR MECHANICAL INTERLOCK

Interlock kit designed for use on the main door of IMS Two-Door enclosures.

Catalog No.	Product Code
SCE-MDMI2	P5

SLAVE DOOR MECHANICAL INTERLOCK

Interlock kit designed for use on the slave door of IMS enclosures.

Catalog No.	Product Code
SCE-SDMI	P5

IMS BOLT PACK

Designed to be used as an additional gasket or to replace gasket kits when changing modular enclosure configurations. Includes oil and water resistant gasket and zinc coated nuts and bolts. Required when bolting one enclosure to another.

Catalog No.	Product Code
SCE-IMSBK	P5

INDUSTRIAL MODULAR SYSTEM (IMS) ACCESSORIES

