

HEAVY DUTY FREE-STANDING ENCLOSURES FOR FLANGE-MOUNTED DISCONNECTS

SINGLE-DOOR ENCLOSURES

Application

Designed to house electrical equipment and provide degree of protection from dirt, dust, oil and water and to house most standard type disconnects. For installation information, consult our Installation Manual at www.saginawcontrol.com.

Construction

- 0.125" carbon steel.
- Seams continuously welded and ground smooth.
- Flange trough collar around all sides of door opening.
- Body stiffeners in large enclosures for extra rigidity.
- Heavy duty lifting eyes anchor into reinforced top.
- Removable center posts permit easy sub-panel installation.
- Concealed hinges.
- Black zinc die cast coinproof/padlocking handle on main door with black zinc die cast padlocking handle on slave doors.
- 3-point latching mechanism.
- Ends of latch rods have ramp shoes for easier door closing.
- Panel supports.
- Large removable print pockets.
- Pour in place oil and water resistant gasket.
- Removable sub-panels mount on collar studs.
- Defeater on master door requires a screwdriver to open.
- Hole plugs provided to seal holes in bottom of enclosure.
- Ground stud on door and body.
- Provisions for light kit.

Disconnect switch (or circuit breaker) and operating mechanism are not furnished with enclosure.

Finish

ANSI-61 gray powder coated inside and out. Optional sub-panels powder coated white.

IS3 Industry Standards

- NEMA Type 3R, 12 & Type 13
- UL Listed Type 3R & 12
- CSA Type 3R & 12
- IEC 60529 IP55

IS4 Industry Standards

- NEMA Type 3R, 4, 12 & Type 13
- UL Listed Type 3R, 4 & 12
- CSA Type 3R, 4 & 12
- IEC 60529 IP66

***To maintain Type 3R listing, Drainage is required. Install equally rated drainage device or drill a 1/8 to 1/4 inch hole in the bottom center of the enclosure, approximately 1 inch from the right, and 1 inch from the left for drainage, use listed rain-tight or wet location hubs. Drip shield over the door is recommended for all outdoor applications.

Enclosure Product Code A2

Sub-Panel (P3)

Catalog No.	Height (A)	Width (B)	Depth (C)	Industry Standard	Catalog No.	Panel Height (D)	Panel Width (E)
SCE-72XM2818	72.00	27.50	18.00	IS4	SCE-64P25**	60.00	21.75
SCE-72XM2818G	72.00	27.50	18.00	IS4	SCE-64P25GALV**	60.00	21.75
SCE-72XM3418	72.00	33.50	18.00	IS3	SCE-64P31**	60.00	27.75
SCE-72XM3418G	72.00	33.50	18.00	IS3	SCE-64P31GALV**	60.00	27.75
SCE-72XM4018	72.00	39.50	18.00	IS3	SCE-64P37**	60.00	33.75
SCE-72XM4018G	72.00	39.50	18.00	IS3	SCE-64P37GALV**	60.00	33.75
SCE-84XM4018	84.00	39.50	18.00	IS3	SCE-76P37**	72.00	33.75
SCE-84XM4018G	84.00	39.50	18.00	IS3	SCE-76P37GALV**	72.00	33.75
SCE-84XM4024	84.00	39.50	24.00	IS3	SCE-76P37**	72.00	33.75
SCE-84XM4024G	84.00	39.50	24.00	IS3	SCE-76P37GALV**	72.00	33.75
SCE-90XM4018	90.00	39.50	18.00	IS3	SCE-82P37**	78.00	33.75
SCE-90XM4018G	90.00	39.50	18.00	IS3	SCE-82P37GALV**	78.00	33.75
SCE-90XM4024	90.00	39.50	24.00	IS3	SCE-82P37**	78.00	33.75
SCE-90XM4024G	90.00	39.50	24.00	IS3	SCE-82P37GALV**	78.00	33.75

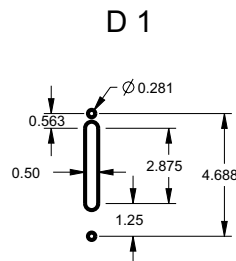
Part numbers ending in "G" have galvanized sub-panels installed.

**Sub-panel included with enclosure. Replacement sub-panels can be ordered.

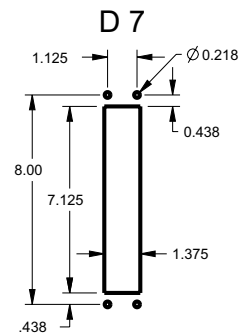
XM ENCLOSURES

* Add the letter U to the end of the part number for enclosures with a universal disconnect cutout.

Standard Disconnect cutout provided



Universal Disconnect cutout



HEAVY DUTY FREE-STANDING ENCLOSURES FOR FLANGE-MOUNTED DISCONNECTS

TWO-DOOR ENCLOSURES

Enclosure Product Code A2					Sub-Panel (P3)		
Catalog No.	Height (A)	Width (B)	Depth (C)	Industry Standard	Catalog No.	Panel Height (D)	Panel Width (E)
SCE-72XM5418	72.00	53.75	18.00	IS4	SCE-64P52**	60.00	48.00
SCE-72XM5418G	72.00	53.75	18.00	IS4	SCE-64P52GALV**	60.00	48.00
SCE-72XM6618	72.00	65.75	18.00	IS3	SCE-64P64**	60.00	60.00
SCE-72XM6618G	72.00	65.75	18.00	IS3	SCE-64P64GALV**	60.00	60.00
SCE-72XM7818	72.00	77.75	18.00	IS3	SCE-64P76**	60.00	72.00
SCE-72XM7818G	72.00	77.75	18.00	IS3	SCE-64P76GALV**	60.00	72.00
SCE-72XM7824	72.00	77.75	24.00	IS3	SCE-64P76**	60.00	72.00
SCE-72XM7824G	72.00	77.75	24.00	IS3	SCE-64P76GALV**	60.00	72.00
SCE-84XM7818	84.00	77.75	18.00	IS3	SCE-76P76**	72.00	72.00
SCE-84XM7818G	84.00	77.75	18.00	IS3	SCE-76P76GALV**	72.00	72.00
SCE-84XM7824	84.00	77.75	24.00	IS3	SCE-76P76**	72.00	72.00
SCE-84XM7824G	84.00	77.75	24.00	IS3	SCE-76P76GALV**	72.00	72.00
SCE-90XM7818	90.00	77.75	18.00	IS3	SCE-82P76**	78.00	72.00
SCE-90XM7818G	90.00	77.75	18.00	IS3	SCE-82P76GALV**	78.00	72.00
SCE-90XM7824	90.00	77.75	24.00	IS3	SCE-82P76**	78.00	72.00
SCE-90XM7824G	90.00	77.75	24.00	IS3	SCE-82P76GALV**	78.00	72.00

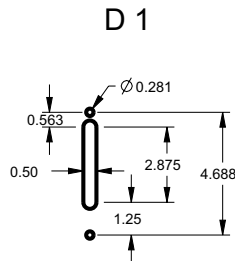
Part numbers ending in "G" have galvanized sub-panels installed.

**Sub-panel included with enclosure. Replacement sub-panels can be ordered.

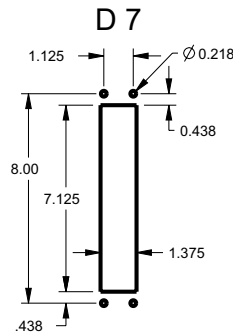
XM ENCLOSURES

* Add the letter U to the end of the part number for enclosures with a universal disconnect cutout.

Standard Disconnect cutout provided



Universal Disconnect cutout



HEAVY DUTY FREE-STANDING ENCLOSURES FOR FLANGE-MOUNTED DISCONNECTS

THREE-DOOR ENCLOSURES

Application

Designed to house electrical equipment and provide degree of protection from dirt, dust, oil and water and to house most standard type disconnects. For installation information, consult our Installation Manual at www.saginawcontrol.com.

Construction

- 0.125" carbon steel.
- Seams continuously welded and ground smooth.
- Flange trough collar around all sides of door opening.
- Body stiffeners in large enclosures for extra rigidity.
- Heavy duty lifting eyes anchor into reinforced top.
- Removable center posts permit easy sub-panel installation.
- Concealed hinges.
- Black zinc die cast coinproof/padlocking handle on main door with black zinc die cast padlocking handle on slave doors.
- 3-point latching mechanism.
- Ends of latch rods have ramp shoes for easier door closing.
- Panel supports.
- Large removable print pockets.
- Pour in place oil and water resistant gasket.
- Removable panels mount on collar studs.
- Master door is far right-hand door on all enclosures.
- Defeater on master door requires a screwdriver to open.
- Mechanical interlock activated by master door prevents slave doors from being opened first. Doors can be closed in any order.
- Hole plugs provided to seal holes in bottom of enclosure.
- Ground stud on door and body.
- Provisions for light kit.

Disconnect switch (or circuit breaker) and operating mechanism are not furnished with enclosure.

Finish

ANSI-61 gray powder coated inside and out. Optional sub-panels powder coated white.

IS3 Industry Standards

- NEMA Type 3R, 12 & Type 13
- UL Listed Type 3R & 12
- CSA Type 3R & 12
- IEC 60529 IP55

***To maintain Type 3R listing, Drainage is required. Install equally rated drainage device or drill a 1/8 to 1/4 inch hole in the bottom center of the enclosure, approximately 1 inch from the right, and 1 inch from the left for drainage, use listed rain-tight or wet location hubs. Drip shield over the door is recommended for all outdoor applications.

Enclosure Product Code A2

Sub-Panel (P3)

Catalog No.	Height (A)	Width (B)	Depth (C)	Industry Standard	Catalog No.	Panel Height (D)	Panel Width (E)
SCE-72XM3EQ18	72.00	99.50	18.00	IS3	SCE-64P31**	60.00	27.75
					SCE-64P64**	60.00	60.00
SCE-72XM3EQ18G	72.00	99.50	18.00	IS3	SCE-64P31GALV**	60.00	27.75
					SCE-64P64GALV**	60.00	60.00
SCE-72XM3EW18	72.00	117.50	18.00	IS3	SCE-64P37**	60.00	33.75
					SCE-64P76**	60.00	72.00
SCE-72XM3EW18G	72.00	117.50	18.00	IS3	SCE-64P37GALV**	60.00	33.75
					SCE-64P76GALV**	60.00	72.00
SCE-84XM3EW18	84.00	117.50	18.00	IS3	SCE-76P37**	72.00	33.75
					SCE-76P76**	72.00	72.00
SCE-84XM3EW18G	84.00	117.50	18.00	IS3	SCE-76P37GALV**	72.00	33.75
					SCE-76P76GALV**	72.00	72.00
SCE-84XM3EW24	84.00	117.50	24.00	IS3	SCE-76P37**	72.00	33.75
					SCE-76P76**	72.00	72.00
SCE-84XM3EW24G	84.00	117.50	24.00	IS3	SCE-76P37GALV**	72.00	33.75
					SCE-76P76GALV**	72.00	72.00
SCE-90XM3EW24	90.00	117.50	24.00	IS3	SCE-82P37**	78.00	33.75
					SCE-82P76**	78.00	72.00
SCE-90XM3EW24G	90.00	117.50	24.00	IS3	SCE-82P37GALV**	78.00	33.75
					SCE-82P76GALV**	78.00	72.00

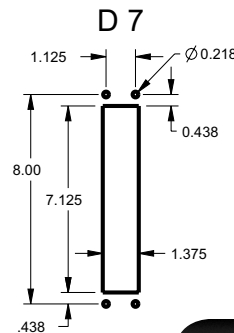
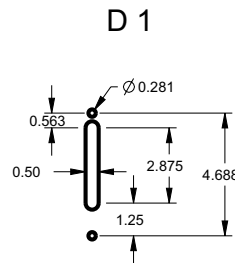
Part numbers ending in "G" have galvanized sub-panels installed.

**Sub-panel included with enclosure. Replacement sub-panels can be ordered. XM ENCLOSURES

* Add the letter U to the end of the part number for enclosures with a universal disconnect cutout.

Standard Disconnect cutout provided

Universal Disconnect cutout



HEAVY DUTY FREE-STANDING ENCLOSURES FOR FLANGE-MOUNTED DISCONNECTS

FOUR-DOOR ENCLOSURES

Enclosure Product Code A2					Sub-Panel (P3)		
Catalog No.	Height (A)	Width (B)	Depth (C)	Industry Standard	Catalog No.	Panel Height (D)	Panel Width (E)
SCE-84XM4EW18	84.00	157.50	18.00	IS3	SCE-76P76** (2)	72.00	72.00
SCE-84XM4EW18G	84.00	157.50	18.00	IS3	SCE-76P76GALV** (2)	72.00	72.00
SCE-84XM4EW24	84.00	157.50	24.00	IS3	SCE-76P76** (2)	72.00	72.00
SCE-84XM4EW24G	84.00	157.50	24.00	IS3	SCE-76P76GALV** (2)	72.00	72.00
SCE-90XM4EW18	90.00	157.50	18.00	IS3	SCE-82P76** (2)	78.00	72.00
SCE-90XM4EW18G	90.00	157.50	18.00	IS3	SCE-82P76GALV** (2)	78.00	72.00
SCE-90XM4EW24	90.00	157.50	24.00	IS3	SCE-82P76** (2)	78.00	72.00
SCE-90XM4EW24G	90.00	157.50	24.00	IS3	SCE-82P76GALV** (2)	78.00	72.00

FIVE-DOOR ENCLOSURES

Enclosure Product Code A2					Sub-Panel (P3)		
Catalog No.	Height (A)	Width (B)	Depth (C)	Industry Standard	Catalog No.	Panel Height (D)	Panel Width (E)
SCE-84XM5EW18	84.00	196.75	18.00	IS3	SCE-76P76** (2)	72.00	72.00
					SCE-76P37**	72.00	33.75
SCE-84XM5EW18G	84.00	196.75	18.00	IS3	SCE-76P76GALV** (2)	72.00	72.00
					SCE-76P37GALV**	72.00	33.75
SCE-84XM5EW24	84.00	196.75	24.00	IS3	SCE-76P76** (2)	72.00	72.00
					SCE-76P37**	72.00	33.75
SCE-84XM5EW24G	84.00	196.75	24.00	IS3	SCE-76P76GALV** (2)	72.00	72.00
					SCE-76P37GALV**	72.00	33.75
SCE-90XM5EW18	90.00	196.75	18.00	IS3	SCE-82P76** (2)	78.00	72.00
					SCE-82P37**	78.00	33.75
SCE-90XM5EW18G	90.00	196.75	18.00	IS3	SCE-82P76GALV** (2)	78.00	72.00
					SCE-82P37GALV**	78.00	33.75
SCE-90XM5EW24	90.00	196.75	24.00	IS3	SCE-82P76** (2)	78.00	72.00
					SCE-82P37**	78.00	33.75
SCE-90XM5EW24G	90.00	196.75	24.00	IS3	SCE-82P76GALV** (2)	78.00	72.00
					SCE-82P37GALV**	78.00	33.75



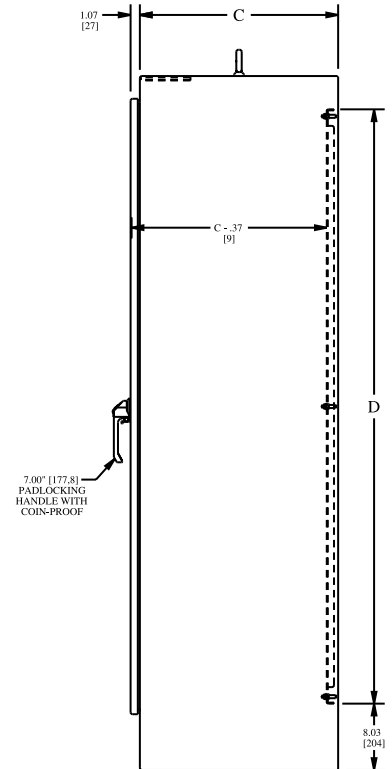
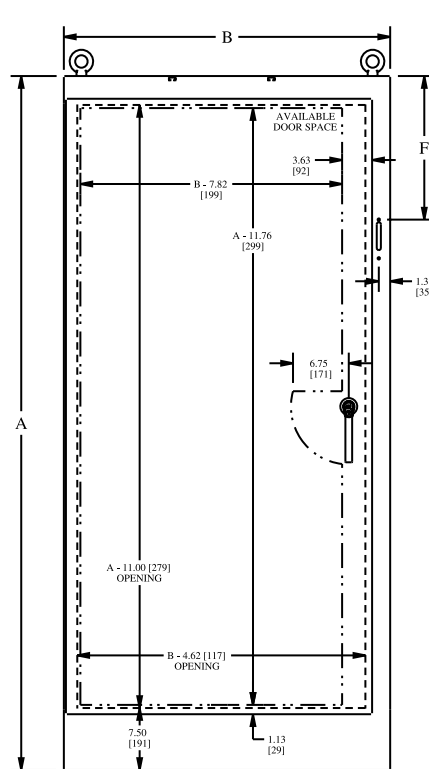
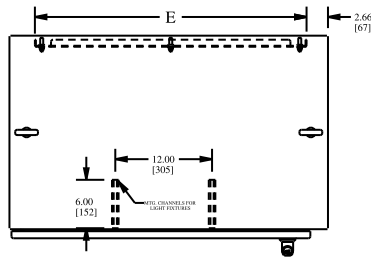
SIX-DOOR ENCLOSURES

Enclosure Product Code A2					Sub-Panel (P3)		
Catalog No.	Height (A)	Width (B)	Depth (C)	Industry Standard	Catalog No.	Panel Height (D)	Panel Width (E)
SCE-84XM6EW24	84.00	235.00	24.00	IS3	SCE-76P76** (3)	72.00	72.00
SCE-84XM6EW24G	84.00	235.00	24.00	IS3	SCE-76P76GALV** (3)	72.00	72.00
SCE-90XM6EW24	90.00	235.00	24.00	IS3	SCE-82P76** (3)	78.00	72.00
SCE-90XM6EW24G	90.00	235.00	24.00	IS3	SCE-82P76GALV** (3)	78.00	72.00

HEAVY DUTY FREE-STANDING ENCLOSURES FOR FLANGE-MOUNTED DISCONNECTS

TECHNICAL DATA

SINGLE-DOOR ENCLOSURES



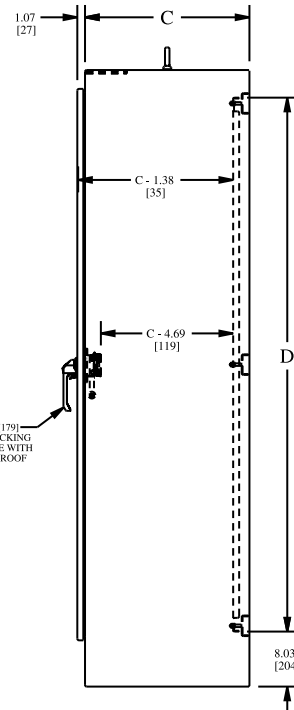
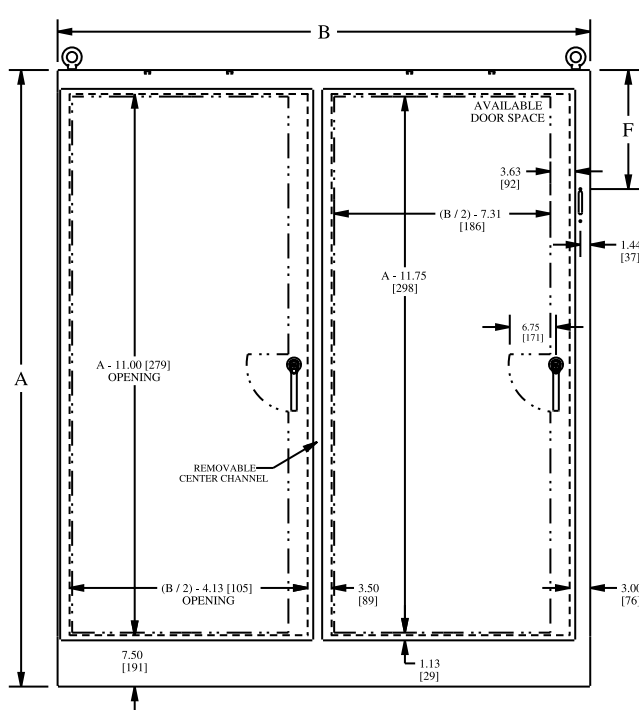
STANDARD DISCONNECTS:

- F = 11.88 [301,7] when A = 72.00 [1828,8]
- F = 17.38 [441,4] when A = 84.00 [2133,6]
- F = 20.38 [517,6] when A = 90.00 [228,6]

U TYPE (Universal) DISCONNECTS:

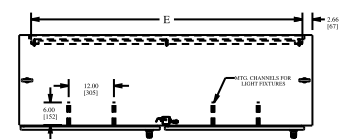
- F = 11.88 [301,8] when A = 72
- F = 17.63 [447,8] when A = 84 & 90

TWO-DOOR ENCLOSURES



- STANDARD DISCONNECTS:**
- F = 11.88 [301,7] when A = 72.00 [1828,8]
 - F = 17.38 [441,4] when A = 84.00 [2133,6]
 - F = 20.38 [517,6] when A = 90.00 [228,6]

- U TYPE (Universal) DISCONNECTS:**
- F = 11.88 [301,8] when A = 72
 - F = 17.63 [447,8] when A = 84 & 90

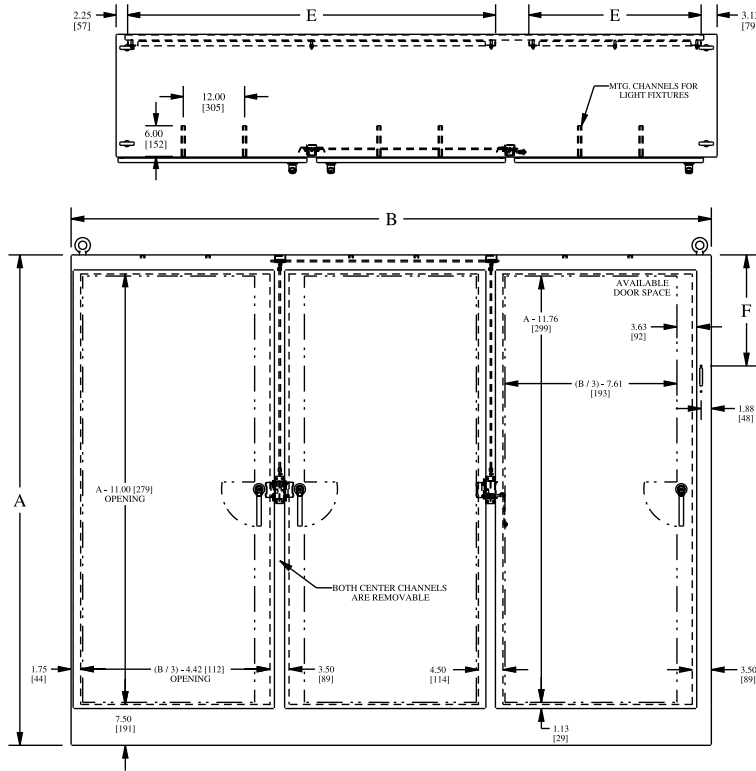


170

HEAVY DUTY FREE-STANDING ENCLOSURES FOR FLANGE-MOUNTED DISCONNECTS

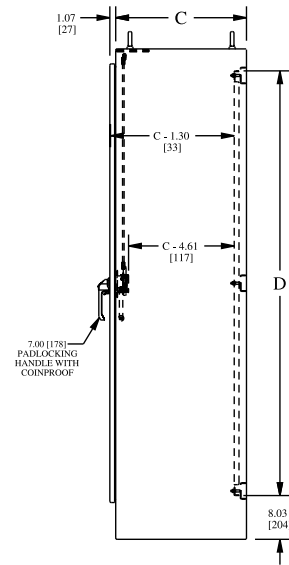
TECHNICAL DATA

THREE-DOOR ENCLOSURES

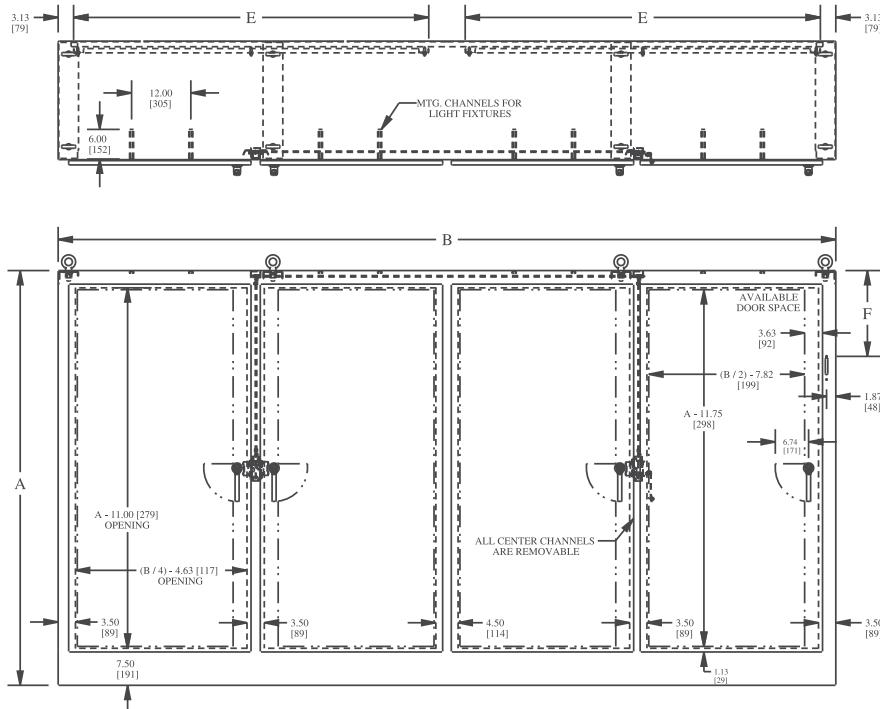


STANDARD DISCONNECTS:
 F = 11.88 [301,7] when A = 72.00 [1828,8]
 F = 17.38 [441,4] when A = 84.00 [2133,6]
 F = 20.38 [517,6] when A = 90.00 [228,6]

U TYPE (Universal) DISCONNECTS:
 F = 11.88 [301,8] when A = 72
 F = 17.63 [447,8] when A = 84 & 90

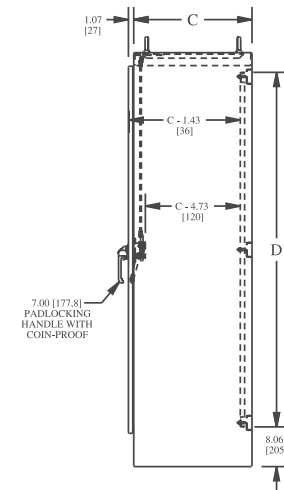


FOUR-DOOR ENCLOSURES



STANDARD DISCONNECTS:
 F = 11.88 [301,7] when A = 72.00 [1828,8]
 F = 17.38 [441,4] when A = 84.00 [2133,6]
 F = 20.38 [517,6] when A = 90.00 [228,6]

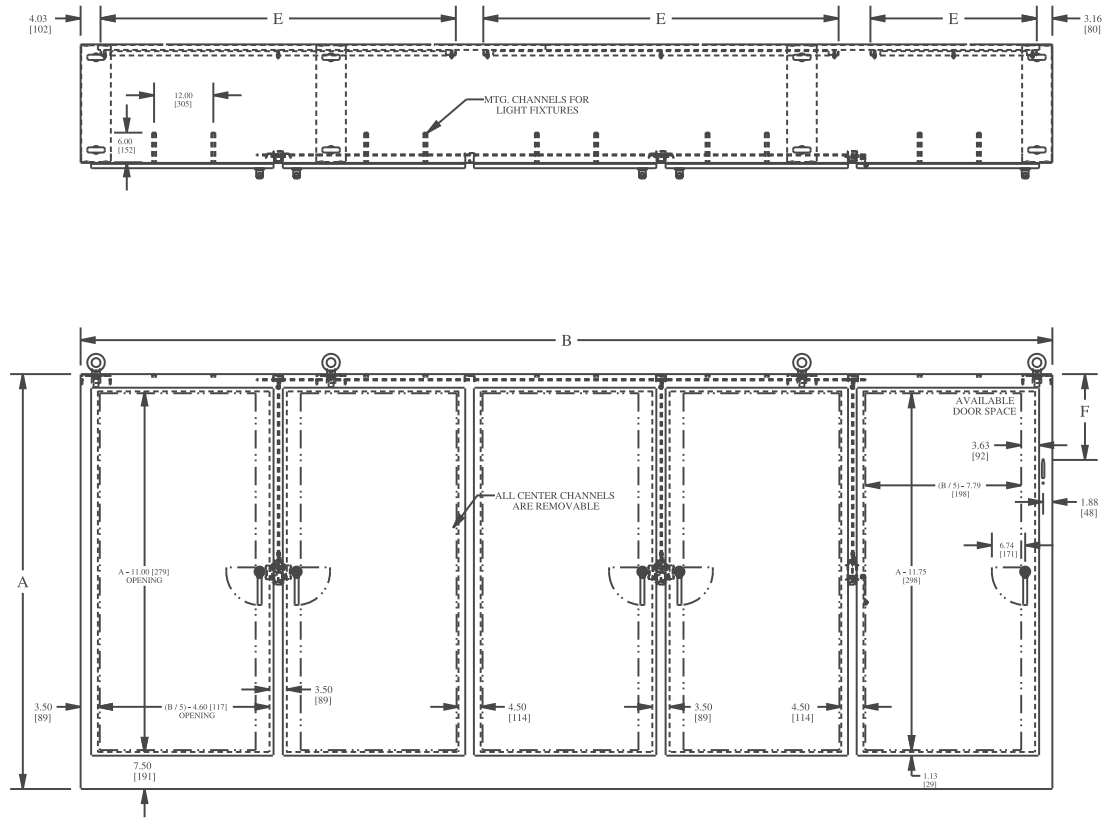
U TYPE (Universal) DISCONNECTS:
 F = 17.63 [447,8]



HEAVY DUTY FREE-STANDING ENCLOSURES FOR FLANGE-MOUNTED DISCONNECTS

TECHNICAL DATA

FIVE-DOOR ENCLOSURES



STANDARD DISCONNECTS:

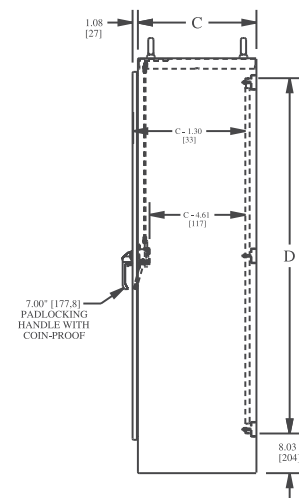
F = 11.88 [301,7] when A = 72.00 [1828,8]

F = 17.38 [441,4] when A = 84.00 [2133,6]

F = 20.38 [517,6] when A = 90.00 [228,6]

U TYPE (Universal) DISCONNECTS:

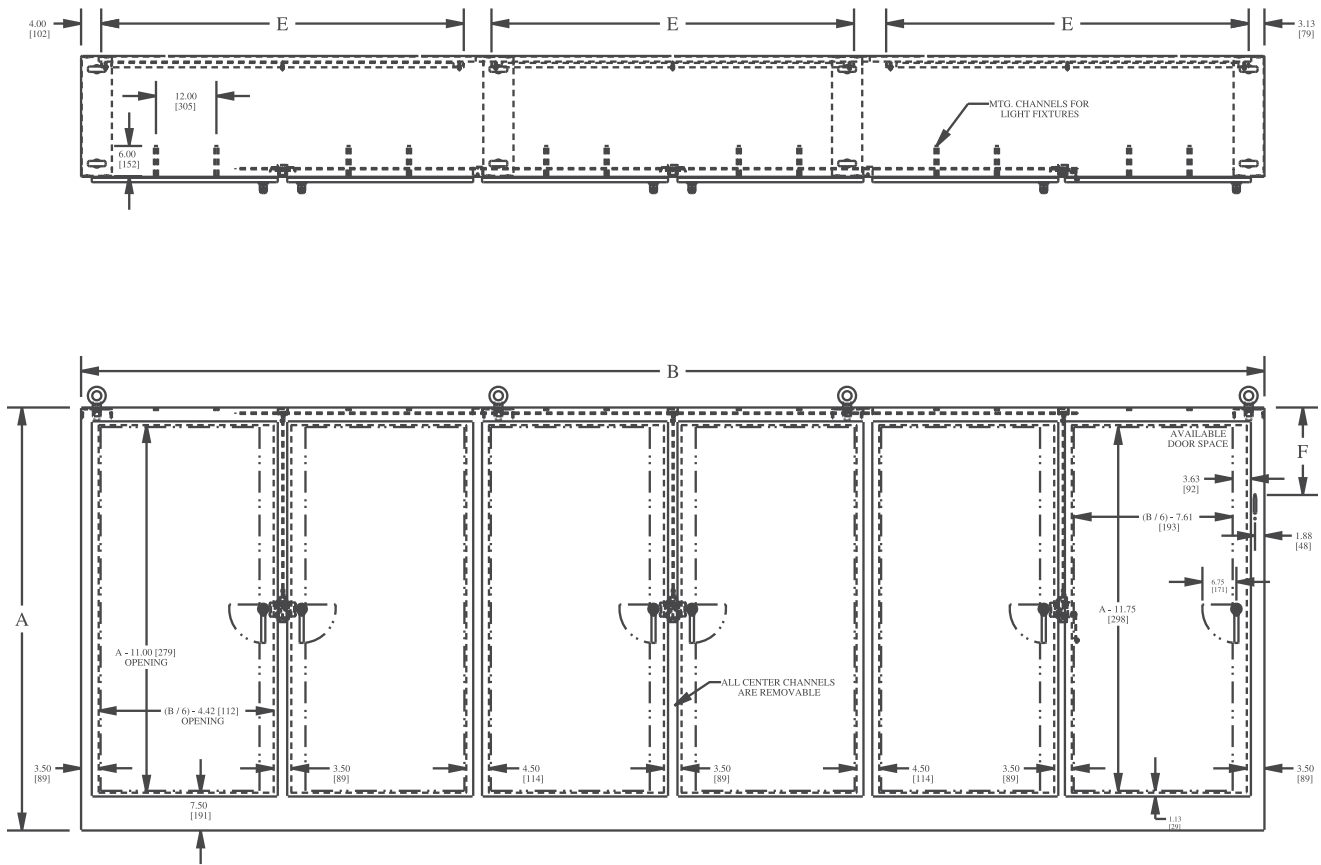
F = 17.63 [447,8]



HEAVY DUTY FREE-STANDING ENCLOSURES FOR FLANGE-MOUNTED DISCONNECTS

TECHNICAL DATA

SIX-DOOR ENCLOSURES



STANDARD DISCONNECTS:

$F = 11.88$ [301,7] when $A = 72.00$ [1828,8]

$F = 17.38$ [441,4] when $A = 84.00$ [2133,6]

$F = 20.38$ [517,6] when $A = 90.00$ [228,6]

U TYPE (Universal) DISCONNECTS:

$F = 17.63$ [447,8]

