

# DOOR HARDWARE

## I/4 TURN DOOR LATCH INSERTS

Designed to replace black quarter turn latches when additional security is required.

### SLOTTED 2 X 4 DOOR LATCH (28MM CAM INCLUDED)

Catalog No.	Qty. Per Kit	Finish	Product Code
<a href="#">SCE-DLSB</a>	1	Chrome	P2
<a href="#">SCE-DLSBB</a>	1	Black	P2
<a href="#">SCE-DLSSB</a>	1	Stainless	P2



### WING KNOB DOOR LATCH (28MM CAM INCLUDED)

Catalog No.	Qty. Per Kit	Finish	Product Code
<a href="#">SCE-DLWKC</a>	1	Chrome	P2
<a href="#">SCE-DLWKF</a>	1	Black	P2
<a href="#">SCE-DLWKF-25</a>	25	Black	V1



### KEYLOCKING WING KNOB LATCH (28MM CAM INCLUDED)

Key: SCE-K333

Catalog No.	Qty. Per Kit	Finish	Product Code
<a href="#">SCE-KLWN</a>	1	Chrome	P2
<a href="#">SCE-KLWNB</a>	1	Black	P2



### PADLOCKING WING KNOB LATCH (28MM CAM INCLUDED)

Catalog No.	Qty. Per Kit	Finish	Product Code
<a href="#">SCE-PLWKB</a>	1	Black	P2
<a href="#">SCE-PLWKB-50</a>	50	Black	V1
<a href="#">SCE-PLWKSS</a>	1	Stainless	P2



### PADLOCKING HOUSING LATCH (28MM CAM INCLUDED)

Catalog No.	Qty. Per Kit	Finish	Product Code
<a href="#">SCE-PLHG</a>	1	Black	P2



### NON-LOCKING "T" HANDLE (28MM CAM INCLUDED)

Catalog No.	Qty. Per Kit	Finish	Product Code
<a href="#">SCE-NLTH</a>	1	Chrome	P2



### KEYLOCKING "T" HANDLE (28MM CAM INCLUDED)

Catalog No.	Qty. Per Kit	Finish	Product Code
<a href="#">SCE-ELKLT</a>	1	Chrome	P2

### COINPROOF DOOR LATCH (28MM CAM INCLUDED)

Catalog No.	Qty. Per Kit	Finish	Product Code
<a href="#">SCE-DLCA</a>	1	Chrome	P2



### SANITARY QUARTER TURN LATCH (28MM CAM AND (1) KEY INCLUDED)

Catalog No.	Qty. Per Kit	Finish	Product Code
<a href="#">SCE-SSQT</a>	1	Stainless	P2



### KEYLOCKING DOOR LATCH (28MM CAM INCLUDED)

Key: SCE-K333

Catalog No.	Qty. Per Kit	Finish	Product Code
<a href="#">SCE-DLKLD</a>	1	Chrome	P2
<a href="#">SCE-DLKLDB</a>	1	Black	P2
<a href="#">SCE-DLKLDB-25</a>	25	Black	V1



### 7MM SQUARE DOOR LATCH WITH KEY (28MM CAM INCLUDED)

Catalog No.	Qty. Per Kit	Finish	Product Code
<a href="#">SCE-DL7SC</a>	1	Chrome	P2



### 8MM SQUARE DOOR LATCH WITH KEY (28MM CAM INCLUDED)

Key: SCE-101697

Catalog No.	Qty. Per Kit	Finish	Product Code
<a href="#">SCE-DL8SB</a>	1	Black	P2
<a href="#">SCE-DL8SC</a>	1	Chrome	P2



### 7MM TRIANGULAR DOOR LATCH WITH KEY (28MM CAM INCLUDED)

Catalog No.	Qty. Per Kit	Finish	Product Code
<a href="#">SCE-DL7TE</a>	1	Chrome	P2



### 5MM DOUBLE BIT DOOR LATCH WITH KEY (28MM CAM INCLUDED)

Key: SCE-110047

Catalog No.	Qty. Per Kit	Finish	Product Code
<a href="#">SCE-DL5MDB</a>	1	Chrome	P2
<a href="#">SCE-DL5MDBB</a>	1	Black	P2



### 6MM EXTERNAL STOP CAM, PLATED STEEL FOR USE WITH QUARTER TURN LATCH

Catalog No.	Qty. Per Kit	Product Code
<a href="#">SCE-100814</a>	10	P2



### 28MM EXTERNAL STOP CAM, PLATED STEEL FOR USE WITH QUARTER TURN LATCH

Catalog No.	Qty. Per Kit	Product Code
<a href="#">SCE-102804</a>	10	P2



# DOOR HARDWARE

## MINI QUARTER TURN LATCH OPTIONS

DESIGNED FOR USE ON ELJ ENCLOSURES AND WINDOW KITS.  
35° CAM INCLUDED



Catalog No.	Qty. Per Kit	Finish	Product Code
<a href="#">SCE-MINO</a>	1	Chrome	P2
<a href="#">SCE-MINO B</a>	1	Black	P2
<a href="#">SCE-MINO SS</a>	1	Stainless	P2
<a href="#">SCE-MINO K</a> (keylocking)	1	Chrome	P2

Key: SCE-2233X

## 304 STAINLESS STEEL PADLOCK BRACKET FOR MINIATURE QUARTER TURN. (ELJ & HWK)



Catalog No.	Qty. Per Kit	Product Code
<a href="#">SCE-MINO PL</a>	1	P2

## BLACK KEYLOCKING LEVER KNOB FOR MINIATURE QUARTER TURN. (ELJ & HWK) (NO CAM INCLUDED)



Catalog No.	Qty. Per Kit	Product Code
<a href="#">SCE-MINO KLB</a>	1	P2

Key: SCE-101697

## BLACK NON-LOCKING LEVER KNOB FOR MINIATURE QUARTER TURN. (ELJ & HWK) (NO CAM INCLUDED)



Catalog No.	Qty. Per Kit	Product Code
<a href="#">SCE-MINO LB</a>	1	P2
<a href="#">SCE-MINO LB-25</a>	25	V2

## BLACK 6MM SQUARE MINIATURE QUARTER TURN WITH KEY. (ELJ & HWK) (NO CAM INCLUDED)



Catalog No.	Qty. Per Kit	Product Code
<a href="#">SCE-MINO 6MS</a>	1	P2

## 35° CAM, PLATED STEEL FOR USE WITH MINIATURE QUARTER TURNS. (ELJ, HWK & HA)



Catalog No.	Qty. Per Kit	Product Code
<a href="#">SCE-105419</a>	1	P2

## 28MM CAM, PLATED STEEL FOR USE WITH MINIATURE QUARTER TURNS



Catalog No.	Qty. Per Kit	Product Code
<a href="#">SCE-112984</a>	1	P2

## "SCE" Handle

Designed for use on custom and stock SCE enclosures. Can be used as replacements for installed SCE hardware when a different locking mechanism is desired. 7" and 5" lengths for different size enclosures. Black zinc die cast. For 2 or 3-point latch, use SCE-ARK36 Door Rod Kit.

Catalog No.	Description	Length	Qty. Per Kit	Product Code
<a href="#">SCE-PCH5</a>	Coinproof/Padlocking	5 in	1	P2
<a href="#">SCE-PH5</a>	Padlocking	5 in	1	P2
<a href="#">SCE-PKH5</a>	Keylocking/Padlocking	5 in	1	P2
<a href="#">SCE-PCH5-7SC</a>	7mm Square Insert	5 in	1	P2
<a href="#">SCE-PCH7</a>	Coinproof/Padlocking	7 in	1	P2
<a href="#">SCE-PH7</a>	Padlocking	7 in	1	P2
<a href="#">SCE-PKH7</a>	Keylocking/Padlocking	7 in	1	P2
<a href="#">SCE-PCH7-7SC</a>	7mm Square Insert	7 in	1	P2



[SCE-PCH5](#)  
[SCE-PCH7](#)



[SCE-PH5](#)  
[SCE-PH7](#)



[SCE-PKH5](#)  
[SCE-PKH7](#)  
Key: [SCE-KC101](#)



[SCE-PCH5-7SC](#)  
[SCE-PCH7-7SC](#)  
Key: [SCE-101695](#)

## "SCE" Stainless Handle

Designed for use on custom and stock SCE enclosures. Can be used as replacements for installed SCE hardware when a different locking mechanism is desired. Stainless Steel, 5" length. For 2 or 3-point latch, use SCE-ARK36 or SCE-103370 Door Rod Kit.

Catalog No.	Description	Length	Qty. Per Kit	Product Code
<a href="#">SCE-PCH5SS</a>	Coinproof/Padlocking	5 in	1	P2
<a href="#">SCE-PH5SS</a>	Padlocking	5 in	1	P2
<a href="#">SCE-PKH5SS</a>	Keylocking/Padlocking	5 in	1	P2



[SCE-PCH5SS](#)



[SCE-PH5SS](#)



[SCE-PKH5SS](#)  
Key: [SCE-KC101](#)

# DOOR HARDWARE

## ENVIROLINE® SERIES HANDLES Key: [SCE-K333](#)

Designed for use in the Enviroline® Series enclosures, for a quick and easy conversion from the standard quarter turn latch, with no added holes or cutouts necessary for installation. Single Point Cam Included. Not recommended for use on enclosures greater than 36" in height.

Catalog No.	Description	Qty. Per Kit	Product Code
<a href="#">SCE-ELKL</a>	Keylocking Handle	1	P2
<a href="#">SCE-ELPL</a>	Padlocking Handle	1	P2



## FLUSH SWING HANDLES

Designed for use on custom and stock SCE enclosures. Can be used as replacements on SCE work stations when a different locking mechanism is required. Zinc die cast metal powder coated black.

Catalog No.	Description	Qty Per Kit	Product Code
<a href="#">SCE-FSH2</a>	Keylocking	1	P2
<a href="#">SCE-FSH4</a>	8mm Square Lock	1	P2
<a href="#">SCE-FSH6</a>	Keylocking/Padlocking	1	P2
<a href="#">SCE-FSH8</a>	Padlocking	1	P2



[SCE-FSH2](#)  
Key: [SCE-K333](#)



[SCE-FSH4](#)  
Key: [SCE-101697](#)



[SCE-FSH6](#)  
Key: [SCE-K333](#)



[SCE-FSH8](#)

## ENVIROLINE® THREE-POINT LATCH KIT

Designed for use with all Enviroline Series enclosures. This simple to install latch kit will add a two or three point latching system to the enclosure. The kit includes easy to cut 5/16 inch round rods with rollers and rod guides for a strong functioning latching system. No added holes or cutouts in the enclosure necessary for installation.

Catalog No.	Qty Per Kit	Product Code
<a href="#">SCE-3PTL</a>	1	P2



384

## KEYLOCKING DOOR LATCH FOR USE WITH NEMA-I ENCLOSURES WITH KNOCKOUTS (CAM AND KEYS INCLUDED)

Catalog No.	Qty Per Kit	Product Code
<a href="#">SCE-L</a>	1	P2



## SMALL THREE POINT CAM, PLATED STEEL FOR USE WITH 5" HANDLES

Catalog No.	Qty Per Kit	Product Code
<a href="#">SCE-3PTSMC</a>	1	P2



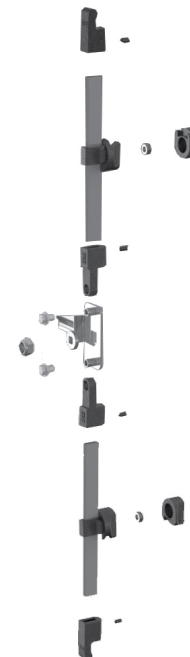
## LARGE CAM FOR DOOR HINGED ON LEFT, PLATED STEEL FOR USE WITH SCE 7" HANDLES

Catalog No.	Qty Per Kit	Product Code
<a href="#">SCE-102237</a>	1	P2



## ALUMINUM ROD KIT WITH RAMP SHOES

Catalog No.	Rod Size	Qty Per Kit	Product Code
<a href="#">SCE-ARK36</a>	0.375 x 0.625	1	P2
<a href="#">SCE-103370</a>	0.25 x 0.50	1	P2



# DOOR HARDWARE

## QUICK RELEASE CLAMP ASSEMBLY

Designed for quick access to an enclosure with standard screw clamps. Black zinc die cast with stainless steel fasteners.

Catalog No.	Enclosure Type	Thread Type	Qty Per Kit	Product Code
<a href="#">SCE-LPQR</a>	"LP"	1/4-20	1	P2
<a href="#">SCE-QRCH</a>	"CHNF"	10-24	1	P2



## REPLACEMENT CLAMPS

Designed as replacement clamps for SCE enclosures.

Catalog No.	Enclosure Type	Thread Type	Finish	Qty Per Kit	Product Code
<a href="#">SCE-LPCLAMP</a>	"LP"	1/4-20	Chrome	2	P2
<a href="#">SCE-LPCLAMPSS</a>	"LP"	1/4-20	Stainless	2	P2
<a href="#">SCE-CHCLAMP</a>	"CHNF"	10-24	Chrome	2	P2
<a href="#">SCE-CHCLAMPSS</a>	"CHNF"	10-24	Stainless	2	P2



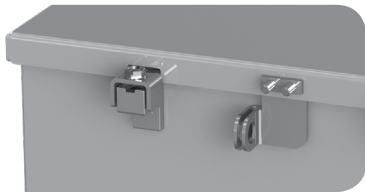
SCE-LPCLAMP/SS

SCE-CHCLAMP/SS

## PADLOCK KIT FOR JUNCTION BOXES

Designed for "CHNF" enclosures. Maintains water-tight and dust-tight seal. Made of plated steel.

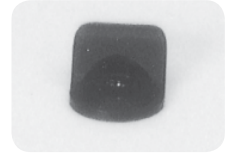
Catalog No.	Qty Per Kit	Product Code
<a href="#">SCE-PLKJIC</a>	1	P2



## FINGER PULL

Designed for use as pull latch for the removable wireway.

Catalog No.	Description	Qty Per Kit	Product Code
<a href="#">SCE-ELFP</a>	Black Polyamide	1	P2



## PULL HANDLE

Designed for use as a handle on enclosures. Handle is a steel tube plastic coated black with black molded polyamide plastic end stays.

Catalog No.	Qty Per Kit	Size	Product Code
<a href="#">SCE-UHK13</a>	1	3.15 x 13.00	P2



## PULL HANDLE - 4"

Designed for use on keyboard drawers, swing out panels, etc. Mounting hardware is included.

Catalog No.	Finish	Hole Center	Qty Per Kit	Product Code
<a href="#">SCE-APH</a>	Aluminum	4.00	1	P2



## HMI PULL HANDLES

Designed for use on HMI enclosures. Handle is a steel tube plastic coated black with black molded polyamide plastic end stays. Mounting hardware is included.

Catalog No.	Length	Qty Per Kit	Product Code
<a href="#">SCE-HMIPH5</a>	5 in.	1	P2
<a href="#">SCE-AUHK</a>	12 in.	1	P2



SCE-HMIPH5

SCE-AUHK