

Perfect Match.



VisuNet FLX—the New Modular
HMI Platform for Use up to Zone
2/22 and Div. 2

The one-in-a-million HMI system
that perfectly fits your application.



Your automation, our passion.

 **PEPPERL+FUCHS**

Designed for Zone 2/22 and Div. 2

Chemical and Petrochemical Industries

The VisuNet FLX series was specially developed for applications in the chemical and petrochemical industries. The operator stations, mounted within the process area, allow workers direct access to the automation software required to run and monitor the process. With certifications for Zone 2/22 and Div. 2, the platform offers a solution for areas where potentially explosive substances are transferred and filled.



Pharmaceutical Industry

Due to its very good cleanability and resistance to aggressive and corrosive substances, the VisuNet FLX platform is also an excellent solution for applications in the pharmaceutical environment. High-quality stainless steels of type 1.4301/304 are used as standard for the system housings and mounting solutions, which also easily meet GMP regulations.

The VisuNet FLX can be directly combined with a variety of hardware accessories. Additional accessories can be found at

www.pepperl-fuchs.com.



Panel Mounting

The different display sizes allow a high degree of flexibility in panel mounting. Depending on the requirements, a 15.6", 19" or 21.5" display can be installed. Combined with the extended temperature range, the homogeneous compression of the seal as well as the pharmaceutical design, the VisuNet FLX can be used for various panel mount applications.



"One Fits All" Design for Maximum Flexibility

VisuNet FLX is, as its name suggests, a comprehensive range of highly flexible operator workstations and monitoring systems from Pepperl+Fuchs for Zone 2/22, Div. 2 and non-hazardous areas. The new platform is tailored to the needs of the petrochemical, chemical, and pharmaceutical industries. Due to the fully modular design, the HMI solutions can be configured to maximize functionality and the platform can be customized quickly and easily in the field.

Three basic configurations are available and are supplemented by a continuously expanding range of peripheral devices:

- HMI system
- Panel PC
- Box PC

Choose from a variety of preconfigured VisuNet FLX solutions that are readily available, or let our global Solution Engineering Centers (SEC) design a fully customized solution based on the VisuNet FLX.



For more information, visit
pepperl-fuchs.com/pr-flx

Worldwide Solution Expertise

At market launch, we already have a wide range of preconfigured VisuNet FLX solutions available for you as "Preferred Products", covering a large part of common industrial applications.

If you have any additional individual customization requirements, you can rely entirely on our Solution Engineering Centers (SEC). Here we develop and manufacture HMI solutions for the whole world.

For example, a large selection of already qualified control elements is available for individual solution design. Solutions for dual monitor or mobile applications are also already included in the design of the VisuNet FLX series and can be custom manufactured if required.



Optically-bonded display

- Increased optical clarity
- Reduced sunlight reflection
- Enhanced ruggedness (against impacts)
- Protection against dust/moisture



For more information, visit pepperl-fuchs.com/pf-visunetapp

Simple replacement of components

The VisuNet FLX computing unit can be configured as a remote monitor with preinstalled RM Shell 5 firmware, high-performance PC with i5 processor and 16 GB RAM, or as a direct monitor – depending on your application and requirements.



Flexible and easy to open

The VisuNet FLX is easy to open. This facilitates the replacement of components during operation in the plant.

Full stainless steel enclosure

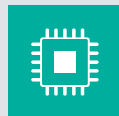
- Industrial all-stainless steel design with optional pharmaceutical-type housing that meets GMP regulations
- Hygienic design
- No steps or edges
- Easy cleaning
- Resistant to common cleaning agents

Modularity

The fully modular VisuNet FLX allows easy assembly and replacement of components in the field. Furthermore, the modules can be configured individually, resulting in maximum flexibility.



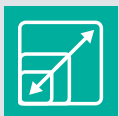
Modular system for simple mounting and replacement of components in the field



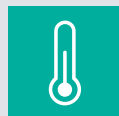
Future-proof: Celeron and i5 processors from Intel's seventh generation



Global service and support: international network and globally certified products



High flexibility and adaptability to different applications



Reliable operation of all components in a wide temperature range



The first end-to-end thin client portfolio on the market: from the control room to applications in Zone 1/21 and Division 1

Configure Your System

Use our product configurator to quickly find the VisuNet FLX HMI system that is ideally suited for your application. With just a few clicks, you can choose between the three basic configurations (HMI system, panel PC, box PC) and the associated product attributes such as CPU type, RAM, or operating system.

When you have completed your configuration, you will receive a type code and can request a non-binding quote directly from us. If you need support, have requirements that are not included in the configurator attributes, or need a custom HMI solution, please use the contact form in the configurator and specify your request in more detail. Our experts look forward to hearing from you!



For more information, visit
pepperl-fuchs.com/pf-visunetconfig



VisuNet RM Shell 5— Next-Generation Firmware

Each VisuNet FLX Remote Monitor is equipped with RM Shell 5, the latest generation of firmware for our thin-client solutions. Security, reliability, and user-friendliness were the focus in its development. The latest update features a modern Windows® 10 IoT operating system and supports all common remote protocols, including Microsoft® RDP10, VNC, and NetC@P. This makes the RMs fully compatible with both virtualized and traditional workstation-based process control systems.

VisuNet Control Center—Uniquely Efficient

With the RM Shell 5, Pepperl+Fuchs offers an even wider range of innovative functions. A special feature of the current version is the VisuNet Control Center.

This additional software makes it possible for the first time to manage smart RMs remotely. Setting up and managing devices in hazardous areas is now easier than ever. The firmware is configured, maintained, monitored, supported, and updated from a central workspace via convenient remote access. Engineers no longer need to enter hazardous areas or clean rooms. Intuitive software design and a focus on features relevant to the process industry simplify operation. All this saves time and reduces costs.

Your automation, our passion.

Explosion Protection

- Intrinsic Safety Barriers
- Signal Conditioners
- FieldConnex® Fieldbus Infrastructure
- Remote I/O Systems
- Electrical Explosion Protection Equipment
- Purge and Pressurization Systems
- HMI Systems
- Mobile Computing and Communications
- HART Interface Solutions
- Surge Protection
- Wireless Solutions
- Level Measurement

Industrial Sensors

- Proximity Sensors
- Photoelectric Sensors
- Industrial Vision
- Ultrasonic Sensors
- Rotary Encoders
- Positioning Systems
- Inclination and Acceleration Sensors
- Vibration Monitoring
- Industrial Ethernet
- AS-Interface
- IO-Link
- Identification Systems
- Displays and Signal Processing
- Connectivity

www.pepperl-fuchs.com

Subject to modifications • © Pepperl+Fuchs
Printed in Germany • Part. No. 70152507 04/22 00 • public



Pepperl+Fuchs Quality

Download our latest policy here:

www.pepperl-fuchs.com/quality