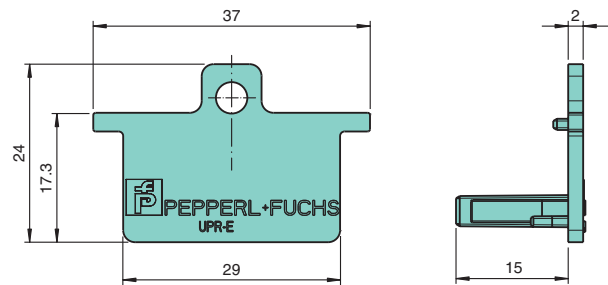


Dimensions

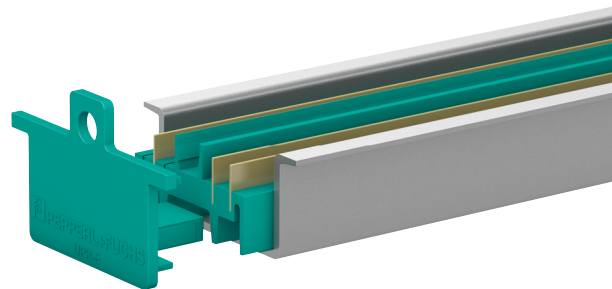


Technical data

Mechanical specifications

Material	Polycarbonate
Mass	approx. 10 g
Dimensions	17 x 37 x 24 mm (0.67 x 1.46 x 0.95 in)
Mounting	on 35 mm DIN mounting rail acc. to EN 60715:2001

Assembly



Features

- Termination of DIN mounting rail
- Suitable for Power Rail UPR-**-*
- Suitable for profile rail K-DUCT

Function

The end cap mounts in the 35 mm DIN mounting rail acc. to DIN EN 60715. The end cap is used to cover the end of the Power Rail.