



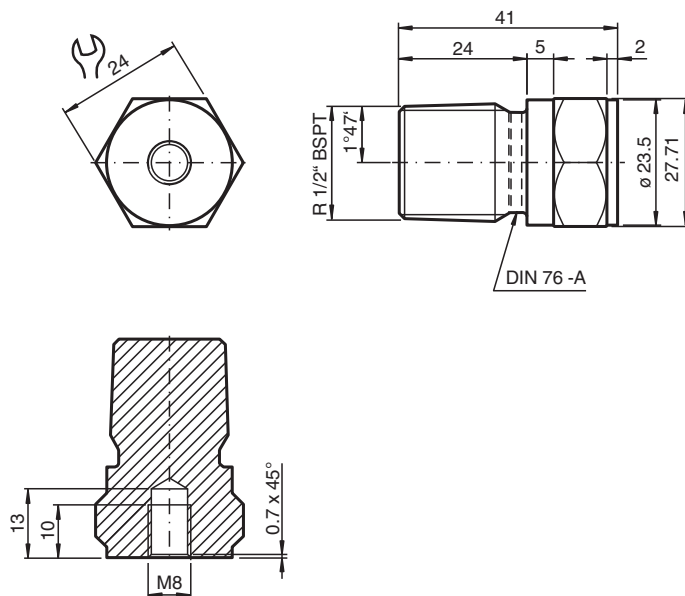
## Mounting adapter

### MONAD-M08-1,25-1,2Z-BSPT/36

- Usable for VIM3\* / VIM6\* vibration sensors with external thread
- Robust due to stainless steel 1.4404 / AISI 316L (V4A)
- Screw-in thread for simple installation

Mounting adapter for VIM3\*/VIM6\* vibration sensors, internal thread M8 x 1.25 x 10, external thread NPT1/2", screw-in depth 24

## Dimensions



## Technical Data

### General specifications

Suitable components	VIM3* vibration sensors VIM6* vibration sensors
---------------------	--

### Mechanical specifications

External thread	for machine mounting
Thread type	NPT
Thread size	NPT 1/2"
Screw-in depth	24 mm
Internal thread	for sensor mounting
Thread type	metric

Release date: 2022-03-16 Date of issue: 2022-03-16 Filename: 70146356\_eng.pdf

Refer to "General Notes Relating to Pepperl+Fuchs Product Information".

Pepperl+Fuchs Group  
www.pepperl-fuchs.com

USA: +1 330 486 0001  
fa-info@us.pepperl-fuchs.com

Germany: +49 621 776 1111  
fa-info@de.pepperl-fuchs.com

Singapore: +65 6779 9091  
fa-info@sg.pepperl-fuchs.com

 PEPPERL+FUCHS

**Technical Data**

Thread size		M8 x 1.25
Thread length		10 mm
Length	L	41 mm
Diameter		27.71 mm
Material		Stainless steel 1.4404 / AISI 316L
Mass		115 g

Release date: 2022-03-16 Date of issue: 2022-03-16 Filename: 70146356\_eng.pdf

Refer to "General Notes Relating to Pepperl+Fuchs Product Information".

Pepperl+Fuchs Group  
www.pepperl-fuchs.comUSA: +1 330 486 0001  
fa-info@us.pepperl-fuchs.comGermany: +49 621 776 1111  
fa-info@de.pepperl-fuchs.comSingapore: +65 6779 9091  
fa-info@sg.pepperl-fuchs.com **PEPPERL+FUCHS**