

Accessories 25mm LED Signal Towers

Accessories for Patlite® 25mm Signal Towers		
Part Number	Price	Description
B72100223-1F1	\$29.00	Red NPN LED module
B72100223-2F1	\$29.00	Amber NPN LED module
B72100115-3F1	\$29.00	Green NPN LED module
B72100115-4F1	\$29.00	Blue NPN LED module
B72100115-7F1	\$29.00	Clear/white NPN LED module
B72100226-1F1	\$35.00	Red PNP LED module
B72100226-2F1	\$35.00	Amber PNP LED module
B72100135-3F1	\$35.00	Green PNP LED module
B72100135-4F1	\$35.00	Blue PNP LED module
B72100135-7F1	\$35.00	Clear/white PNP LED module
S33552110-0346F1	\$5.00	1-tier center screw, zinc plated steel
S33552110-0376F1	\$6.00	2-tier center screw, zinc plated steel
S33552110-03108F1	\$6.00	3-tier center screw, zinc plated steel
S33552110-03138F1	\$6.00	4-tier center screw, zinc plated steel
SZ-013	\$8.00	"L" angle aluminum mounting bracket, 22mm diameter, steel
B32310020-F1	\$8.00	25mm diameter cap, ABS plastic



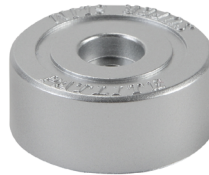
B72100223, B72100115



B72100226, B72100135



S33552110



B32310020-F1



SZ-013

Accessories

Accessories for Patlite® 30mm Signal Towers		
Part Number	Price	Description
MP-B	\$59.00	80dB @ 1 meter / 3,000Hz add-on alarm; activated by red module
B72100182-1F1	\$35.00	Red LED module
B72100182-2F1	\$35.00	Amber LED module
B72100182-3F1	\$35.00	Green LED module
B72100182-4F1	\$35.00	Blue LED module
B72100182-7F1	\$35.00	Clear/white LED module
B72100192-1F1	\$35.00	Red LED module with clear lens
B72100192-2F1	\$35.00	Amber LED module with clear lens
B72100192-3F1	\$35.00	Green LED module with clear lens
B72100192-4F1	\$35.00	Blue LED module with clear lens
S33552120-0355F1	\$5.00	1-tier center screw, zinc plated steel
S33552120-0390F1	\$5.00	2-tier center screw, zinc plated steel
S33552120-03125F1	\$6.00	3-tier center screw, zinc plated steel
S33552120-03160F1	\$6.00	4-tier center screw, zinc plated steel
B25110032-F1	\$6.00	LED module o-ring, silicone
SZ-904	\$15.00	22mm to 3/4" FNPT adapter, aluminum
SZ-150	\$19.00	220mm extension pole, ABS plastic
SZ-013	\$8.00	"L" angle mounting bracket, 22mm diameter, aluminum
B32310025-F1	\$8.00	30mm diameter cap, ABS plastic



MP-B



B72100xxx-xF1



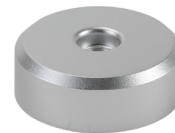
SZ-150



SZ-904



S33552120-03xxxxx



B32310025-F1



B25110032-F1

SZ-013



Accessories 40mm LED Signal Towers

Accessories for Patlite® 40mm Signal Towers		
Part Number	Price	Description
SZ-012	\$7.00	L-bracket for 17mm pole
SZ-021	\$22.00	Side mount bracket for 17mm pole, ivory color
SZ-80L	\$50.00	300mm pole kit for LCE series with L-bracket
B22220020-F1	\$23.00	40mm diameter top mating bracket for 17mm pole, ivory color
SZ-80NPT	\$48.00	40mm to 1/2" FNPT adapter
SZ-011	\$22.00	94mm diameter aluminum flange mount bracket for 17mm pole
SZ-903	\$16.00	17mm to 1/2" FNPT adapter
17POLE-1010	\$34.00	1000mm chrome plated steel pole, 17mm diameter with L-bracket
B72100126-1F1	\$26.00	Red LED module
B72100126-2F1	\$26.00	Amber LED module
B72100126-3F1	\$37.00	Green LED module
B72100126-4F1	\$37.00	Blue LED module
B72100126-7F1	\$37.00	Clear/white LED module
S33552120-0350F2	\$7.00	1-tier center screw, zinc plated steel
S33552120-0385F1	\$7.00	2-tier center screw, zinc plated steel
S33552120-03120F1	\$7.00	3-tier center screw, zinc plated steel
S33552120-03155F1	\$10.00	4-tier center screw, zinc plated steel
B32310029-F1	\$8.00	40mm diameter cap, ABS plastic
Z35721009-034F1	\$7.00	O-ring, silicone



SZ-012



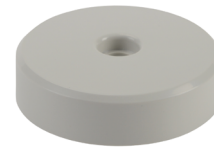
B72100126-xF1



SZ-011



SZ-021



B32310029-F1



SZ-903



S33552120-03xxx



Z35721009-034F1



17POLE-1010



SZ-80L



B22220020-F1

PATLITE® 70mm LED Signal Towers

Accessories

Accessories for Patlite® 70mm Signal Towers		
Part Number	Price	Description
SZ-100D	\$27.00	150mm tall pedestal, dark gray
SZ-110D	\$33.00	Wall mount bracket, dark gray
SZ-130D	\$33.00	3-hole to 4-hole mounting adapter, dark gray
SZ-100	\$27.00	150mm tall pedestal, off-white
SZ-110	\$33.00	Wall mount bracket, off-white
SZ-130	\$33.00	3-hole to 4-hole mounting adapter, off-white
B45110011-F1	\$29.00	Outer cover, polycarbonate
Z35721039-F1	\$9.00	O-ring for outer cover, silicone
Z35721038-056F1	\$9.00	O-ring for base, silicone



SZ-100D



SZ-100



SZ-110D



SZ-110



SZ-130D



SZ-130



Z35721039-F1



Z35721038-056F1



MARSHALL WOLF

AUTOMATION

www.wolfautomation.com