

LED Light Bar PATLEDs™ INSTRUCTION MANUAL [Model : CLA]

Thank you for purchasing the PATLEDs LED Work Light for your application. Prior to installation, please read through this manual for proper installation and precautionary steps. In addition, please store this manual for future reference when performing maintenance, repairs or inspections. If you have any questions regarding this product, please contact our PATLITE Sales Representative.

Safety Precautions

In order to prevent any damage to the user and other personnel or to assets, note the following:

◆ The following symbols classifies the following precautions into two categories and explains the level of harm inflicted when caution is disregarded while using this product.

- WARNING** Displays the warning "Failure to follow warning may lead to death or severe injury".
- CAUTION** Displays the warning "Failure to follow caution may lead from light to medium injury or may lead to property loss or injury to others".

◆ The following symbols indicate and explains the nature of the information to be observed.

- This symbol indicates "Prohibited", which should not be carried out by all means.
- This symbol indicates "Enforced", which should be observed and carried out by all means.

1. For safe application, observe the following:

WARNING

- Do not modify or disassemble the product. Failure to comply may result in electric shock or fire.
- After installing this product, be careful not to use this product to climb onto a machine, or to get anything snagged onto this product while it is mounted on equipment, etc. Failure to comply may result in falling off the machinery or product damage may occur.

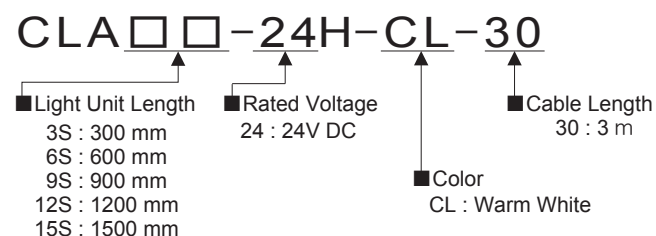
- Be sure to disconnect the power when wiring, mounting, exchanging, or repairing the product. Failure to comply may result in damage of the internal circuitry and the danger of electric shock due to short-circuiting.
- Request the installation and wiring to be accompanied by a professional contractor. Failure to comply may result in electric shock, fire, or falling from high places.
- When this product is used for security purposes, it should be inspected daily, and to be used in conjunction with other security products, in case a malfunction should occur.
- Verify the installation location is a firm location which can handle the weight of the product and has no adverse vibrations. If installed in a place where vibration is frequent and/or exceeds the specifications, damage to the product may occur.

CAUTION

- In order to avoid danger to the eyes, do not stare into the beam, do not view directly into the optical instrument, and don't turn the beam towards someone's eyes. The LED beam is hazardous to the eyes.
- Do not loosen any screws. It will have an adverse effect on the protection rating.

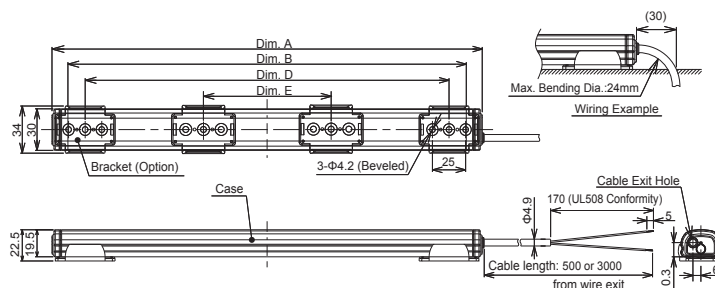
- Verify that the specified operating voltage is not exceeded.
- Connect an external fuse for protection from the power supply. The product can be protected by short-circuiting due to mis-wiring and overcurrents or overvoltages which can damage it.
- Avoid installation in the following locations:
 - In direct sunlight, near space heaters or places where high temperatures are present.
 - In locations where iron powder, oil, chemical or explosive gasses, etc., are present.

2. Model Number Configuration



3. Part Names and Dimensions

Outer Dimensions (mm)



[Dimension Chart]

Model Name	Dim. A Maximum	Dim. B Lighting	Dim. D Attachment Pitch	Dim. E	Accessory Brackets
CLA3S	324	300	274	-	2
CLA6S	624	600	574	-	2
CLA9S	924	900	874	290	*4
CLA12S	1224	1200	1174	390	*4
CLA15S	1524	1500	1474	490	*4

Corresponding Bracket Table

Model Name	SZ-310AS	SZ-310ASB	SZ-310ARM
CLA3S	○	○	○
CLA6S	○	×	○
CLA9S	○	×	○
CLA12S	○	×	○
CLA15S	○	×	○

4. Installation

WARNING

- Do not modify or disassemble the product. Failure to comply may result in electric shock or fire.
- After installing this product, be careful not to use this product to climb onto a machine, or to get anything snagged onto this product while it is mounted on equipment, etc. Failure to comply may result in falling off the machinery or product damage may occur.

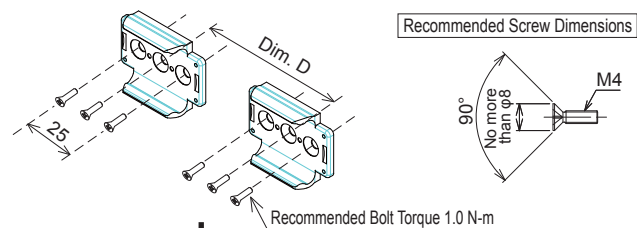
- Be sure to turn off the power to prevent from electric shock before performing any maintenance.
- Verify the installation location is a firm location which can handle the weight of the product and has no adverse vibrations. If installed in a place where vibration is frequent and/or exceeds the specifications, damage to the product may occur.

CAUTION

- Be careful to properly install the product to prevent it from falling, etc.
- This product is designed for indoor use only (Not for outdoor Use).
- The bracket is made of polycarbonate resin. Damage may occur if solvents such as screw locking agents or such adhesives are used.

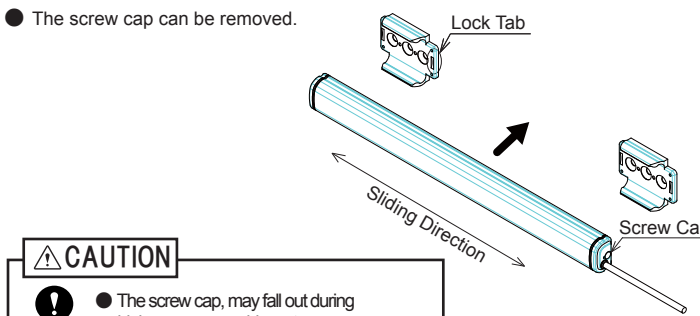
Installation Location

- After making mounting holes on a flat and sturdy surface, attach the bracket. Referring to the drawing below, install the bracket with M4 flush-mount screws (recommendation : use two screws per bracket).
- For the 9S, 12S, and 15S, please orientate the four SZ-310AR brackets included with the product.



- After the bracket is mounted to a sturdy surface, snap the main unit into place. A slide lock is possible when attaching with the recommended installation pitch. Installation is possible for other mounting pitches.

- The screw cap can be removed.



CAUTION

- The screw cap, may fall out during high-pressure washing, etc. Please remove it in advance to prevent it from falling out before a problem occurs. (Example: Contamination in a food-processing line)
- The product slides in the direction indicated when mounting outside the recommended pitch.

5. Wiring and Proper Use

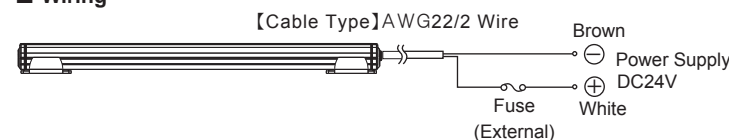
WARNING

- Be sure to disconnect the power when wiring, mounting, exchanging, or repairing the product. Failure to comply may result in damage of the internal circuitry and the danger of electric shock due to short-circuiting.

CAUTION

- Check that the proper voltage is connected before applying power.
- Do not pull on the cable, or try to push it inside the unit. Possible cause of failure may occur. In addition, allow a margin of slack for the wire and cable to prevent stress.
- Use a constant-voltage regulated power supply. Possible cause of failure may occur with the use of a constant current power supply.
- Connect an external fuse for protection from the power supply. The product can be protected by short-circuiting due to mis-wiring and overcurrents or overvoltages which can damage it.
- The Protection Rating does not include the cable ends. **If the ends of the cable are in contact with water or exposed to dew or condensation, refer to the indications below to dress the cable ends for water resistance.**
 - Connect the wire ends in a location which will not expose the ends to water.
 - Use Fillers, such as silicon, etc., to seal the cable ends.

Wiring



- The internal protection for the product requires a 2A fuse rating. For lighting installation, use a fuse with a rating of 2A or higher.
- Use a UL authenticated Class 2 power supply unit to connect power to this product. The power supply unit is constant voltage type.
- [UL508A conformity for LED lighting installation designs] In case the supplying power from power unit is beyond 150V, please ground the primary power unit side to earth ground.

Operation

Referring to section "Wiring" above, by applying DC 24V, the LED will turn on. ※ LED's will start to light-up when 0.1mA or more is applied.

6. Maintenance and Inspection

Refer to the table below before requesting repairs. If the product does not work after referring to the table below, please request for repair. In addition, if there are any questions concerning this product, feel free to contact your PATLITE Sales Representative.

Problem	Where to Check	What to do
Does not light up	Is the power properly supplied?	<ul style="list-style-type: none"> Verify the voltage has been connected. Verify the proper polarity. (White : +, Brown : -) Verify the proper voltage is supplied (24V DC). Check whether the external fuse has been blown-out.

7. Specifications

CAUTION

- Specifications and dimensions may change without prior notice for improvements, etc.
- Due to the characteristics of the LED, color temperature, brightness and hue will differ for every LED and every product.
- Since all IP examinations are done according to specified conditions and regulated time, the protection rating is not guaranteed for an extended period of time.

Model Name	CLA3S	CLA6S	CLA9S
Light Unit Length	300 mm	600 mm	900 mm
Color Code	CL		
Luminous Color	Warm White		
Color Temperature (typ.)	2700K		
Illuminance (at 24V DC)	150 lx	290 lx	400 lx
Luminous Flux (at 24V DC)	500 lm	960 lm	1360 lm
Rated Voltage	24V DC (Polarized)		
Operating Voltage Range	24V DC ±10%		
Rated Current Consumption	300mA ± 10%	600mA ± 10%	900mA ± 10%
Rated Power Consumption	7.2W	14.4W	21.6W
Operating Temperature Range	-40°C to +50°C (RH 90% or less, no condensation)		
Main Body Material	Polycarbonate Resin (Waterproof Packing: Silicon)		
Protection Rating	IP66/67(IEC 60529)/69K (DIN 40050 part9) (Cable connector ends not included)		
Mounting Direction	Indoor Use Any Direction		
Insulation Resistance	5MΩ or more with a 500V DC Megohmmeter		
Withstanding Voltage	500V AC for 1 minute		
Vibration Resistance	19.6 m/s ² (30Hz, Back and Forth: 2h-Right to Left: 2h-Up and Down: 2h)		
Mass	0.24kg ± 10%	0.4kg ± 10%	0.57kg ± 10%

Model Name	CLA12S	CLA15S
Light Unit Length	1200 mm	1500 mm
Color Code	CL	
Luminous Color	Warm White	
Color Temperature (typ.)	2700K	
Illuminance (at 24V DC)	490 lx	560 lx
Luminous Flux (at 24V DC)	1910 lm	2395 lm
Rated Voltage	24V DC (Polarized)	
Operating Voltage Range	24V DC ±10%	
Rated Current Consumption	1,200mA ± 10%	1,500mA ± 10%
Rated Power Consumption	28.8W	36.0W
Operating Temperature Range	-40°C to +50°C (RH 90% or less, no condensation)	
Main Body Material	Polycarbonate Resin (Waterproof Packing: Silicon)	
Protection Rating	IP66/67(IEC 60529)/69K (DIN 40050 part9) (Cable connector ends not included)	
Mounting Direction	Indoor Use Any Direction	
Insulation Resistance	5MΩ or more with a 500V DC Megohmmeter	
Withstanding Voltage	500V AC for 1 minute	
Vibration Resistance	19.6 m/s ² (30Hz, Back and Forth: 2h-Right to Left: 2h-Up and Down: 2h)	
Mass	0.73kg ± 10%	0.88kg ± 10%

PATLITE Corporation

International Division Sales & Marketing Department
Inaba Building 4-11-14 Itachibori Nishi-ku Osaka 550-0012 Japan
TEL. +81-6-7688-5400
FAX. +81-6-7688-5401

PATLITE (U.S.A.) Corporation
20130 S. Western Avenue, Torrance, CA 90501 U.S.A.
TEL. +1-310-328-3222
FAX. +1-310-328-2676

PATLITE Europe GmbH
Am Soeldnermoos 8, D-85399 Hallbergmoos, Germany
TEL. +49-811-99819770-0
FAX. +49-811-99819770-9

PATLITE (SINGAPORE) PTE LTD
No.2 Leng Kee Road, #05-01 Thye Hong Centre, Singapore 159086
TEL. +65-6226-1111
FAX. +65-6324-1411

PATLITE (CHINA) Corporation
Room 512, Jufeng Business Building, No.697-3 Lingshi Road, Shanghai 200072, China
TEL. +86-21-6630-8969
FAX. +86-21-6630-8938

PATLITE KOREA CO., LTD.
A-2603, Daesung D-POLIS, 543-1 Gasan-dong, Geumcheon-gu, Seoul, 153-719 Korea
TEL. +82-2-523-6636
FAX. +82-2-861-9919

PATLITE Japan Representative Office in Taiwan
7F, No. 91, Huayin St, Datong District Taipei, Taiwan R.O.C.
TEL. +886-2-2555-1611
FAX. +886-2-2555-1621

<http://www.patlite.com/>

PATLITE and the PATLITE logo is a trademark, or registered trademark of the PATLITE Corporation of Japan and each country.