

Voice Synthesizer Instruction Manual

[TYPE : BDV]

Thank you very much for purchasing the Voice Synthesizer. Before use, please read this Instruction Manual thoroughly and use the product correctly. In addition, keep this manual in a safe place. When carrying out maintenance/check, repair etc., be sure to reread this manual. If an unclear point arises, please inquire to each sales office or technical consultation service written in the last page.

Safety Precautions

In order to prevent harm on users or other persons and damage on properties, the matters to be kept without fail are explained as follows.

■ The degree of harm and damage that will occur when misuse is made by ignoring the contents of indication is classified and explained by the following indications.



The column with this indication shows the contents in which "possibility of death or being seriously injured is assumed."



The column with this indication shows the contents in which "possibility of being injured or only occurrence of property damage is assumed."

1. Matters to be kept without fail for Safety Purpose



- At the wiring and mounting of products, be sure to cut off power source. There is a risk of electrical shock.
- Do not disassemble or modify the product. There is a risk of fire, electrical shock etc. For repair, check etc of inside the product, please inquire to each sales office or technical consultation service written in the last page.
- Pay attention not to mistake wiring work. If wiring is mistaken, the internal circuit may burn out and it will become a cause of fire.
- Be sure to use the power supply within the allowable voltage range of the product. Otherwise, it may become a cause of fire and/or failure.
- For the installation with execution of work, be sure to ask a professional company. Otherwise, there is a risk of electrical shock, fire and/or falling etc.



- Be sure to connect the external fuse for protection of the power supply circuit and internal circuit of the product.
- Do not use it at the place where vibration exists that is exceeding the specifications. In addition, be sure to install on upright direction at the place where vibration exists. There is a risk of damage and/or falling of the product.

The trouble occurred due to mishandling against the warning and caution matters, and/or due to disassembling, modification, natural disaster etc. cannot be guaranteed. Further, avoid the usage under conditions other than the contents described in this manual.

Request

- Use it in the environment where strong radio waves and/or inductive noise do not exist. Otherwise, there is a risk of noise generation from the Speaker.
- Use it in the environment where corrosive gas does not exist. Otherwise, it will become a cause of failure.
- In order to avoid electrostatic breakdown, start to work after discharging static electricity which is charged on a human body. By touching an earthed metallic part with a bare hand, static electricity can be discharged.
- Perform fitting of each part at a recommended torque value.
- Pay attention not to lose the parts such as the terminal covers, front covers etc. which are to be detached at performing work.
- If this product is used for the safety-sensitive security purpose, be sure to perform daily check, and establish the system design that can cope with the occurrence of accidental trouble and failure.

~ Caution on copyright ~

If a work that was recorded or copied from music CDs or other media is used at public places, law enforcement for copyright infringement may be imposed. When using a work that was recorded or copied from music CDs or other media, be sure to obtain permission from the author. In addition, the copyright of audio/music data which are distributed or sold by PATLITE Corporation belongs to PATLITE. It is strictly prohibited to copy/reprint the partial or whole contents of audio/music data of PATLITE Corporation or to transfer/sell them on computer networks etc. without the permission of the right holder.

2. Indication Method of Models

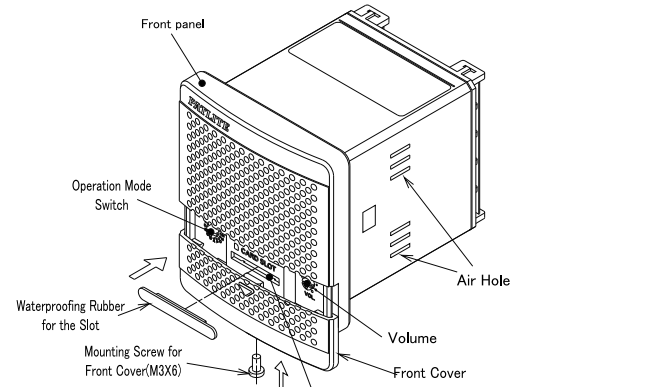
BDV - 15 **K** F - **J**

■ Rated voltage
J: 12-24V DC
K: 100V/220V AC

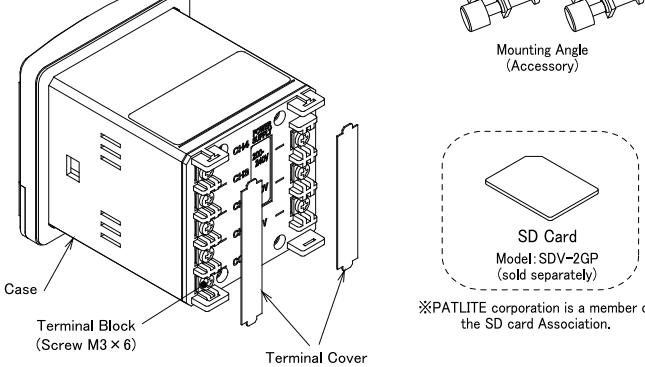
■ Body color
J: Light gray
K: Dark gray

3. Parts Names

【Front Side】



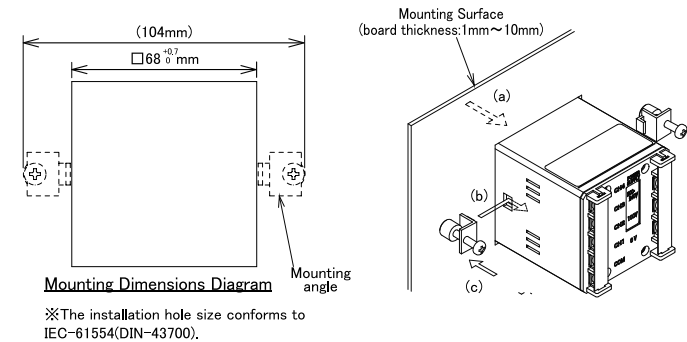
【Rear Side】



4. How to install

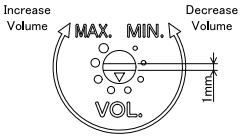
Install the product according to the procedure below.

- ① Create mounting holes on a mounting surface (board thickness: 1mm ~ 10mm) where there is enough space for the mounting angle. (See the mounting dimensions diagram)
- ② (a) Insert the product from the front of the mounting surface.
(b) Attach the mounting angle which comes with the product to the holes on the side of the product.
(c) Then fasten the screws of the mounting angle. (Recommended tightening torque: 0.7±0.1N•m)
- ③ Confirm that the product and the mounting angles are installed properly.



6-4. Volume Adjustment

The sound level can be adjusted by the volume control.
Use a flat-head screwdriver with a blade width of 1.0mm or thinner for tuning the volume control.



PLEASE

- Turn the volume control lightly, a torque over 0.3N•m can damage the volume control.

NOTE

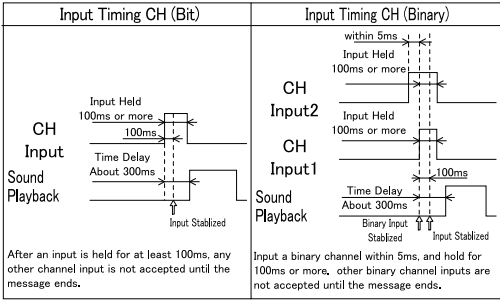
- As the sound increases, the possibility of distortion may also occur.
- Due to environmental conditions and tolerances, the volume may not be at zero sound level.
- The volume is turned half-way at the factory prior to shipment.

6-5. Message Playback

Turn the product on and short-circuit the signal line to the common line to for operation.

- Short-circuit the signal wire to common for 100ms or more (Pulse input).
- When controlling this product via the power supply, the start-up takes about 500ms before the sound can play back.
- The input timing for all modes and all the CH inputs are the same for when playing back messages. Please refer to the Input Timing Chart below for operation.
- When two or more signal wires are short-circuited at the same time to the common lines for bit input, the higher channel takes priority (bit input only).

Priority Input Order : CH4>CH3>CH2>CH1



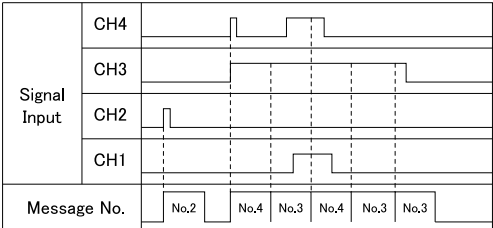
NOTE

- Although a pop noise may occur when the playback is controlled via the power supply or playback start and finish, it is not an indication of failure.
- Even when starting two or more units simultaneously, a lag will occur during message playback.

6-5-1. Bit Input Mode (Operation Mode Switch: A)

If signal wires from CH1 to CH4 are short-circuited to the common, the message of the selected channel will play back.

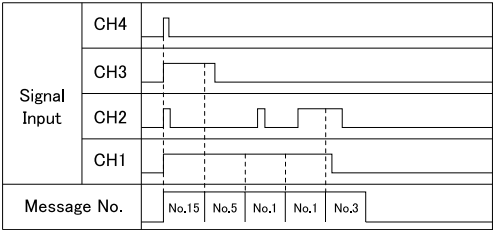
Signal Input Timing Chart (Bit Input)



6-5-2. Binary Input Mode (Operation Mode Switch: B)

If signal wires from CH1 to CH4 are short-circuited to the common, the message corresponding to the binary input conversion table will be played back. (Refet to the "Binary Input Table")

Signal Input Timing Chart (Binary Input)



Binary Input Table

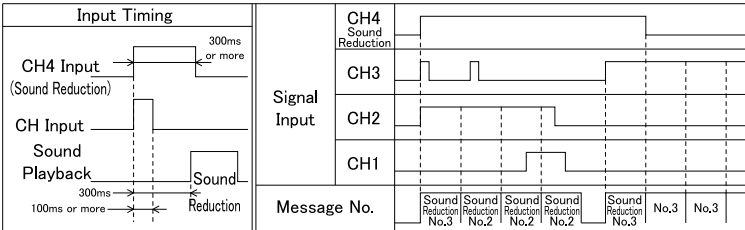
Message No.	CH1	CH2	CH3	CH4	Message No.	CH1	CH2	CH3	CH4
1	1	0	0	0	9	1	0	0	1
2	0	1	0	0	10	0	1	0	1
3	1	1	0	0	11	1	1	0	1
4	0	0	1	0	12	0	0	1	1
5	1	0	1	0	13	1	0	1	1
6	0	1	1	0	14	0	1	1	1
7	1	1	1	0	15	1	1	1	1
8	0	0	0	1					

※ A "1" in the table refers to the short-circuit of the signal line to the common line.

6-5-3. Bit Input Sound Reduction Mode (Operation Mode Switch: C)

- CH1 to 3 corresponds to Bit Inputs. CH4 Input reduces the volume by 10dB.
- CH4 has no input priority.
- When multiple messages are entered during playback, the next message will be reduced.
- In some cases, the message will be reduced by 10dB during playback.

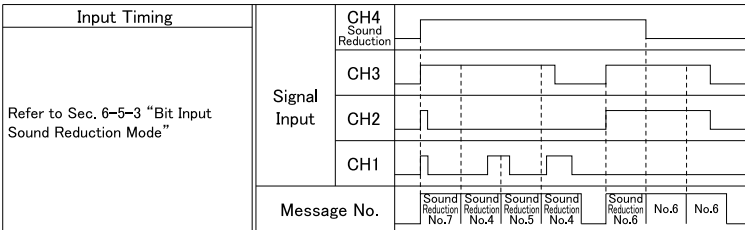
Sound Reduction Timing Chart (Bit Input)



6-5-4. Binary Input Sound Reduction Mode (Operation Mode Switch: D)

- CH1 to 3 corresponds to Binary Inputs. CH4 Input reduces the volume by 10dB.
- CH4 has no input priority.
- When multiple messages are entered during playback, the next message will be reduced.
- In some cases, the message will be reduced by 10dB during playback.

Sound Reduction Timing Chart (Binary Input)

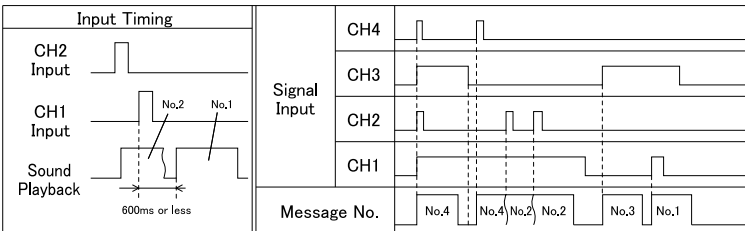


6-5-5. Bit Input Interrupt Playback Mode (Operation Mode Switch: E)

When one of the signal wires from CH1 to CH4 are entered for a bit input and an input message is entered during message playback, the message will interrupt the message being played.

- Even if the input is held down, the message playback will be reproduced only once.
- There is no Priority Input Order

Interrupt Playback Timing Chart (Bit Input)



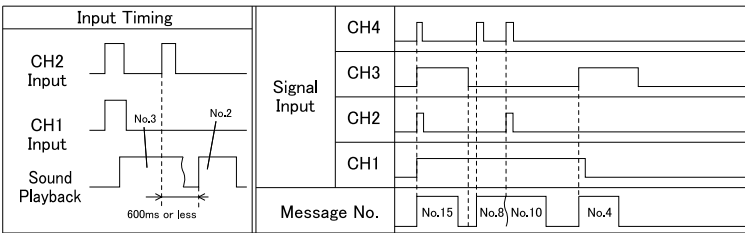
[}] Indicates an interrupted message

6-5-6. Binary Input Interrupt Playback Mode (Operation Mode Switch: F)

When one of the signal wires from CH1 to CH4 for a binary input are entered and an input message is entered during message playback, the message will interrupt the message being played.

- Even if the input is held down, the message playback will be reproduced only once.
- There is no Priority Input Order

Interrupt Playback Timing Chart (Binary Input)

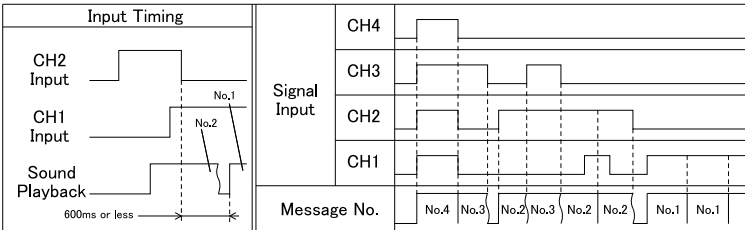


6-5-7. Bit Input Hold Playback Mode (Operation Mode Switch: G)

If the signal wires from CH1 to CH4 for a bit input are held when short-circuited to common, the message will repeat until the signal wire is removed from common.

- Once the input is lost, the playback will stop.

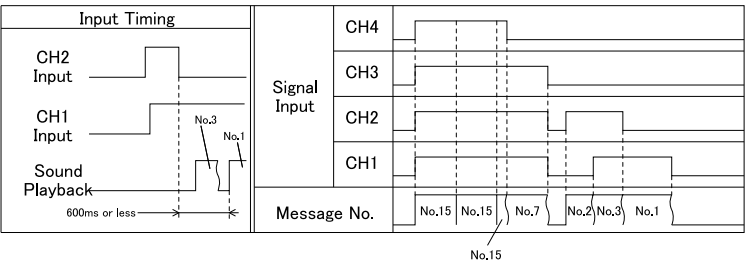
Hold Playback Timing Chart (Bit Input)



6-5-8. Binary Input Hold Playback Mode (Operation Mode Switch: H)

- If the signal wires from CH1 to CH4 for a binary input are held when short-circuited to common, the message will repeat until the signal wire is removed from common.
- Once the input is lost, the playback will stop.

Hold Playback Timing Chart (Binary Input)



6-5-9. Test Playback (Operation Mode Switch: I through P)

Message from CH1 continues being played back. Any other CH inputs are ignored during test playback.

- Use the "Test Playback Mode" when checking the operation or adjusting the volume.
- To operate in the "Test Playback Mode", select the "Operation Mode Switch" to any mode from "I" to "P".
- Because the "Test Playback Mode" automatically resets the "Operation Mode" to 'A', reboot the product after exiting the "Test Playback Mode" in order for the new settings to take effect.

7. Options and Accessories

■ SD Card: Model SDV-128P

The SD Card is used when changing the messages for the Voice Annunciator product.

■ Voice Playlist Editor: Model FV-Win

MP3 Editor software.

8. Before Requesting Repair

Problem	Where to Check	What to do
No Sound	Is there power supplied?	Double check the wiring. (5. Wiring)
	Is the signal line to common line short-circuited correctly?	
	Is the volume turned down to minimum?	
Different Channel Plays Back	Is the signal line to common line short-circuited correctly?	Double check the wiring. (5. Wiring)
	Is the Operation Mode Switch set correctly?	
	Is the data storage location correct?	
Cannot Record Message	Is there power supplied?	Double check the wiring. (5. Wiring)
	Is the playlist created on the SD card?	
	Is the file name and contents of the playlist folder right?	Double check the contents of the SD Card Playlist and Data Folder. (FV-Win or Patlite Playlist Editor Help File.)
	Is the SD card an option product from our company?	
	Is the SD card inserted correctly?	Double check the SD Card. (6-3. Message Rewriting)
	Is the volume turned down to minimum? (Overwrite beep may not be heard)	
SD Card not being read	Is the "SDV-2GP being used?	Double check the SD Card. (6-3. Message Rewriting)
	Is the SD Card correctly inserted?	

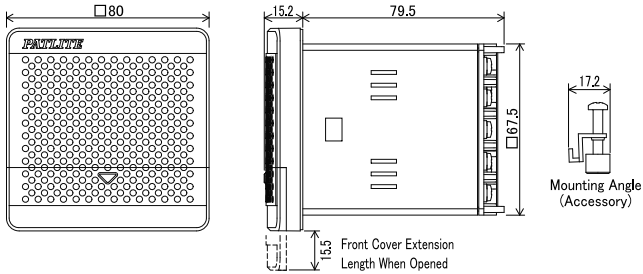
- Even after proper installation and handling, if the product does not operate correctly, contact your PATLITE Sales Representative.

9. Specifications

Model	BDV-15JF	BDV-15KF
Rated Voltage	12 ~ 24V DC	100V AC (50/60Hz) 220V AC (50/60Hz)
Voltage Range	10.8 ~ 26.4V DC	100V AC ± 10% 220V AC ± 10%
Power Consumption	Max. 4W	Max. 5W
Sound Pressure Level	Max. 87dB: Placed on a 300mm ² base at a distance of 1 meter with a 1kHz sine wave at a ~6dB input. Volume Adjustable ※Sound level of message will vary with the surrounding environment.	
Audio File	MPEG1 Audio Layer III (MP3) Standard Bit Rate: 64kbit/s, Fs=44.1kHz (CD Quality)	
File Format	FAT16	
Internal Memory Size	508kB (MP3 data total)/ Maximum playback time 63sec (at Standard Bit Rate)	
Number of Playback Messages	Bit Input: 4 / Binary Input: 15	
Operating Temperature Range	-10 to +50°C	
Relative Humidity	85% RH or less (no condensation)	
Mounting Direction	Indoor: Upright, sideways and inverted mounting (Use Upright if water splashing is present) Outdoor: Upright Direction Only	
Protection Rating	IP54 (Upright Direction for Panel Mount only)	
Insulation Resistance	1MΩ or more (at 500V DC) between terminal and chassis	
Withstanding Voltage	500V AC for 1 minute 1500V AC for 1 minute (Between terminal and chassis)	
Vibration Resistance	At 30Hz in directions from back and fourth, left and right, up and down for 2 hours 19.6m/s ² (Upright Position)	
Mass	220g ± 10% 340g ± 10%	

- This product conforms to EN standard and shows the CE Marking. (24V type.) This product has been tested and found to comply with the limits for a Class A device, pursuant to EMC DIRECTIVE. These limits are designed to provide reasonable protection against harmful interference when the equipment is operated in a commercial environment. This product must not be used in residential areas.

【Outer Appearance Drawing】



- PATLITE Corporation disclaims all liability for any malfunction or damage occurring as a result of handling contrary to the instructions, cautions and warnings mentioned in this manual.
- Specifications may change without notice due to continual product improvement.

PATLITE Corporation

G2G

PATLITE Corporation ※Head office
4-1-3, Kyutaramachi, Chuo-ku, Osaka 541-0056 Japan

PATLITE (U.S.A.) Corporation
PATLITE Europe GmbH ※Germany
PATLITE (SINGAPORE) PTE LTD
PATLITE (CHINA) Corporation
PATLITE KOREA CO., LTD.
PATLITE TAIWAN CO., LTD.
PATLITE (THAILAND) CO., LTD.

http://www.patlite.com/
http://www.patlite.eu/
http://www.patlite.com/
http://www.patlite.cn/
http://www.patlite.co.kr/
http://www.patlite.tw/
http://www.patlite.co.th/