



LogBox-DA

ELECTRONIC DATA LOGGER - MANUAL V1.1x H

PRESENTATION

LogBox-DA is an electronic data logger with two input channels, one analog and one digital. Input data is stored in the logger internal memory, for later download to a PC for visualization and analysis in the form of tables or graphs. The data is easily exported to spreadsheets.

The **LogChart-II** is the software used to configure the logger, download and visualize data. The logger configuration allows defining the logger operation mode, including programming the start/stop time of data acquisition. Other parameters such as signal input type, logging interval, multiplication factor, scale range, etc, are easily selected through the **LogChart-II** software.

The **LogBox-DA** also provides a signal for commanding an external power supply (battery) of a device connected to the logger. This feature allows that external devices, such as a transmitter, be powered only during the measurement sample time, thus extending the autonomy of these external batteries.

MEMORY CAPACITY

- 64k Model: Allows up to 64,000 records

Memory capacity is always shared between enabled channels. In case there are two channels enabled, each gets 50 percent of the memory available. When only a single channel is enabled, it has the entire memory at its disposal.

Memory capacity is indicated on the identification label placed on the logger case.

Example:



Fig. 1 – Lateral identification label

INPUT SIGNALS

Channel 1 (IN 1) counts electric pulse signals. They can be voltage pulses, a dry contact (switch) or open collector signals, as selected in the configuration.

Channel 2 (IN 2) measures linear analog signals, which can be 0-20mA, 4-20mA, 0-50mV or 0-5V, user defined.

Note: For the channel 2, depending on the input signal selected, it may be necessary to configure an internal jumper.

DATA ACQUISITION (LOGGING)

Data can be acquired by means of two different modes.

In channel 1, which counts pulses, the number of input pulses counted in the logging time interval is stored in the logger memory at the end of the interval. The maximum number of loggings that can be stored depends on the memory capacity of the device model.

In channel 2, specific for analog signals, the logger can be configured to perform a single measurement at the end of the selected time interval storing the value read; 10 measurements within the time interval and store the mean of values read, or, yet, record the minimum or maximum values read in the interval.

OPERATION

The logger operation mode is user-defined in the **LogChart-II** software. To access or change this configuration, the **IR-LINK3** interface is required. The user must install the **LogChart-II** software in a computer and run the logger configuration according to instructions defined in the **LogChart-II** installation section of this manual.

After configuration and input electric connections made, the device is ready to measure and log input signals. The status indicators show the logger current status.

STATUS INDICATORS (LEDS)

The Status Indicators (see **Fig. 2**) are located in the logger front panel. They indicate the current working conditions of the unit.

LOG Indicator (Logging): While in stand-by (not logging) or after a series of acquisitions is ended, it flashes once at every four seconds. While logging is active, it flashes twice every four seconds.

ALM Indicator (alarm): Alerts the user regarding alarm conditions. Once triggered, the alarm LED keeps flashing once at every four seconds until a new configuration is entered.

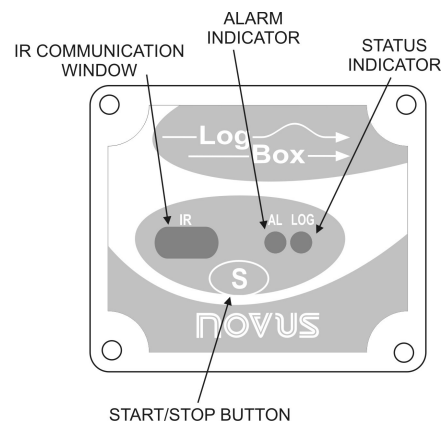


Fig. 2 – LED Indicators and IR communication

CHANNEL 1 MULTIPLICATION FACTOR

Channel 1 was designed to count electric pulses from liquid flow meters (litters per pulse, for example). The amount of liquid corresponding to each pulse and the unit of flow can be easily configured.

Although suited to flow measurements, channel 1 can measure any variable whose signal is an electric pulse (energy, production batches, etc). The user can define a new unit by typing it in the corresponding text box. The expression *l/pulse* in the multiplication factor is meaningless in this case, so please disregard it.

LOGCHART-II

INSTALLING LOGCHART-II

To install the LogChart II, execute the **LC_II_Setup.exe** program available on our website. The installation wizard will then guide you throughout the installation process.

RUNNING LOGCHART-II

Start the program. The main window will appear on the screen, as in Fig. 3.

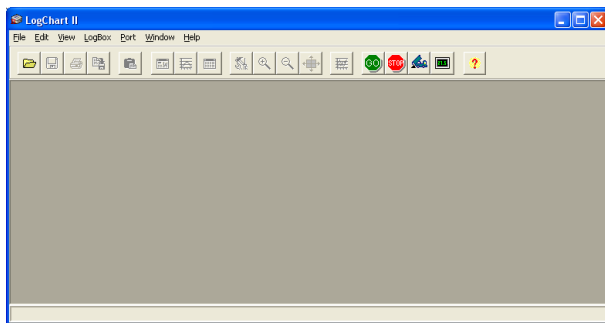


Fig. 3 – LogChart-II main window

The LogChart II requires a communication port to talk to the logger. Clicking on the menu **Port**, all free communication ports available in the computer will be listed, including the USB port if the driver is installed. Select one and connect the corresponding wand (IR-LINK3/RS232 or IR-LINK3/USB) to it. The chosen port will be remembered next times the LogChart II is initiated.

When the selected port is successfully opened, the LogChart II initial screen is opened, enabling the buttons below:



Fig. 4 – Buttons enabled when the communication port of choice is valid

OPTIC INTERFACE IR-LINK3

Configuring, monitoring or downloading data from the logger through LogChart-II requires that the IR-LINK3 communication interface be connected to your PC. This interface is sold separately.

The IR-LINK3 interface sends and receives data to/from the logger through infrared signals. Windows will request the proper driver installation, which is found on our website. After installation is completed, the IR-LINK3 interface is recognized whenever it is connected to the PC.

NOTE: After the USB driver installation, the LogChart II must be opened again. In the "Port" menu, choose the same port selected for the optical interface communication (COM1, COM2 or USB).

CONFIGURING THE LOGGER

Make sure the IR-LINK3 wand is connected to the PC port selected. The interface must be pointed towards the logger communication window (see Fig. 5) at a distance of about 15 cm.

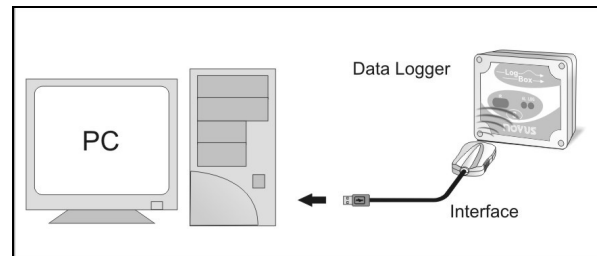



Fig. 5 – Infrared interface position

Click the  button to start the communication between the logger and the software; the **Parameters Configuration** window is then displayed (Fig. 6), showing the current configuration and information about the logger. New configuration parameters defining the operation mode for a new application can be entered. The fields of the configuration window are described below.

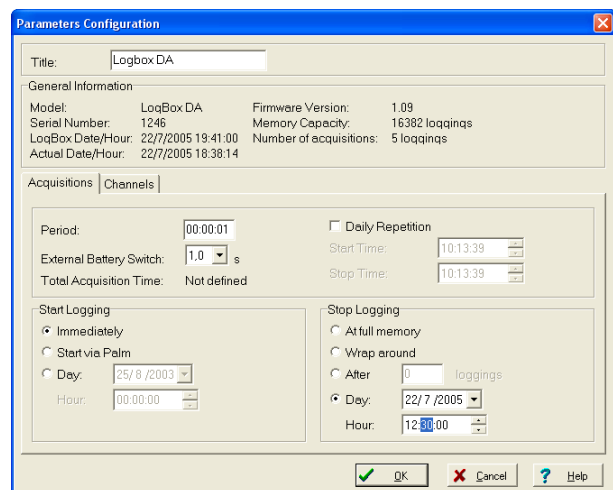


Fig. 6 – Configuration window

GENERAL INFORMATION

General information on the top of the screen informs the model, serial number, logger current date/time, PC date/time, firmware version (logger model version), memory capacity and used memory.

The time is constantly updated in this screen, provided that the logger and the PC are communicating.

ACQUISITIONS

Interval: It determines the interval between readings in the hh:mm:ss format. New data is stored in the logger memory after each time interval.

External Battery Switch time: Defines an interval of time preceding each measurement for turning on the power supply of external devices (4-20 mA transmitters, for example). This feature is intended for saving power when the external power supply is battery powered and the logging interval is long. This signal is disabled when a measurement is completed.

This time is limited to 10 seconds and must be less than half of the interval between readings.

When channel 2 (analog input) is configured to **Instantaneous** readings, the measurements are taken at the end of the defined interval between readings. For **Average**, **Minimum** and **Maximum** readings, the logger executes 10 readings within this interval. This must be taken into account when defining the time to activate the external power supply (1/2 of interval/10).

Estimated Time: It informs the estimated time for the accomplishment of programmed readings based on the logging "Interval" and on the number of programmed readings.

Daily Repetition: Allows loggings to be repeated every day, for example, recording data from 8 AM to 5 PM day after day. The start and stop times are defined in the fields "Start time" and "Stop time."

START LOGGINGS

Immediately: The logger starts logging as soon as the configuration is applied. Not valid when the option 'Daily Repetition' is selected.

Day / Hour: Logging starts at a defined date and time. The date defined is used for the Daily Repetitions option as well.

STOP LOGGINGS

At Full Memory: Loggings can be stored up to the full memory capacity is reached.

Wrap around: Logging never stops. The LogBox-DA will keep on recording the readings and when the memory is full it will overwrite the oldest record in a circular or wrap around manner.

After a defined number of readings: The logger will stop logging after the number of readings here defined is reached. Not valid when the option Daily Readings is selected.

Day / Hour: The LogBox-DA will stop logging at the user-defined date and time. Not valid when the option 'Daily Repetition' is selected.

CHANNELS

By selecting the "Channels" tab, the user is able to choose the individual settings for each input channel, as Fig. 7 shows.

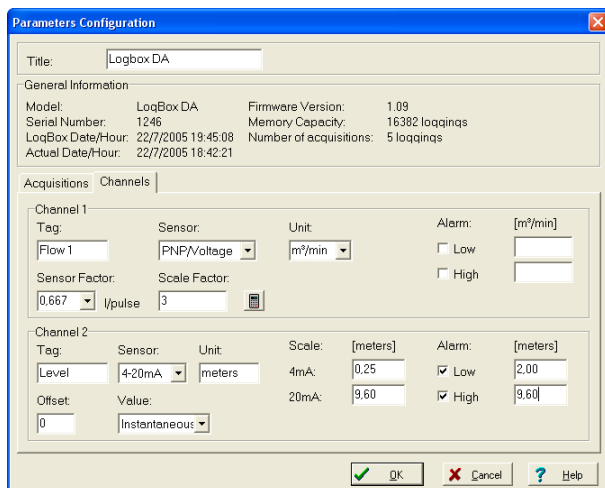


Fig. 7 – Parameters for Input Channels Configuration

CHANNEL 1 – DIGITAL PULSE LOGGINGS

Configuration options provided for Channel 1 are:

Tag: Defines a name (up to 8 characters) for identifying the variable to be measured.

Sensor: selects the input type of the channel: *Unabled, PNP/Voltage, NPN, Dry Contact.*

Unit: Defines the input variable unit. Flow measurement is default, however, other units can be defined by typing the unit in the text box.

Sensor Factor: Defines the amount of input per pulse. Liquids flow measurement is default (liters per pulse.) It can assume any value between 0.000001 and 16383.

Scale Factor: Adjusts the readings such as to represent a particular flow measurement unit. This factor can be automatically calculated (the software computes the value taking into account the interval between loggings and the sensor factor) by using the button:



It can assume values between 0,000001 and 65535.

Alarm: The routines for alarms **LOW** and **HIGH** are executed at the end of the logging period, informing the occurrence of an alarm by flashing the alarm LED in the front panel.

LOW defines the minimum value under which the alarm is triggered; **HIGH** defines the maximum value above which the alarm is triggered. Once activated, the alarm LED indicator stays so even after the alarm-triggering situation has ceased.

CHANNEL 2 – ANALOG INPUT

The options provided for Channel 2 configurations are:

Tag: Defines a name (up to 8 characters) for identifying the variable to be measured.

Input: The signal applied to the logger second input is defined here. The following options are offered: *None* (disabled), *4-20 mA*, *0-20 mA*, *0-50 mV*, *0-10 V*. The option selected must be compatible with the LogBox internal jumper configuration. See configurations on Table 1.

Unit: Defines the variable unit.

Scale: Defines the range, in engineering units, for representing the input variable measured in input 2. Adjustable: 0 to 65535, 65535 to 0, -32768 to 32767, 32767 to -32768.

Offset: Allows fine offset corrections on the measured value.

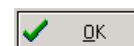
Value: Defines readings recording mode:

- **Instantaneous:** The instant value read at the logging time.
- **Average:** Arithmetic average of 10 consecutive samples equally spaced over the logging interval.
- **Minimum:** Records in memory the minimum value of 10 consecutive readings in the logging interval.
- **Maximum:** Records in memory the minimum value of 10 consecutive readings in the logging interval.

Alarm: The routines for alarms **LOW** and **HIGH** are executed every time the logger samples the inputs, informing the occurrence of an alarm by flashing the alarm LED in the front panel.

LOW defines the minimum value under which the alarm is triggered; **HIGH** defines the maximum value above which the alarm sensor is triggered. Once activated, the alarm LED indicator stays so even after the alarm-triggering situation has ceased.

After filling all the fields, send the configuration to the logger by clicking on the button:



To stop loggings, click on the button:



ELECTRICAL CONNECTIONS

Only the input channels connections and the External Battery Switch (when used) are needed. The logger is exclusively powered by its internal battery.

In the IP65 models, the inputs and the signal for activating the external power supply are located inside the logger case, which must be opened for accomplishing the connections.

In the IP67 model, proper connectors are provided for this purpose, as shown in Fig. 9.

CONNECTIONS IN THE IP65 MODEL

Open the logger's cover to get access to the block terminals and the configuration jumpers. Connection cables must pass through the compress fitting located at the bottom of the case. Figure 8 indicates the signals polarity.

Note: Make sure that the compress fitting is perfectly tightening the cables, thus assuring proper IP65 protection (totally dust-tight and protected against water jets).

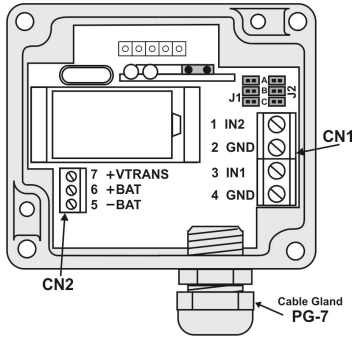


Fig. 8 – IP65 connections internal view

CONNECTIONS IN THE IP67 MODEL

In the IP67 version, a M8 connector is provided for signal input, as in Fig. 9. When required, a second M8 connector can be installed to output the signal for commanding the external power supply. The cables are supplied with the logger.

Note: The case cover should not be opened unless battery replacement is required. If this is the case, the cover must be properly tightened back in its place such as to assure the IP67 / 68 protection.

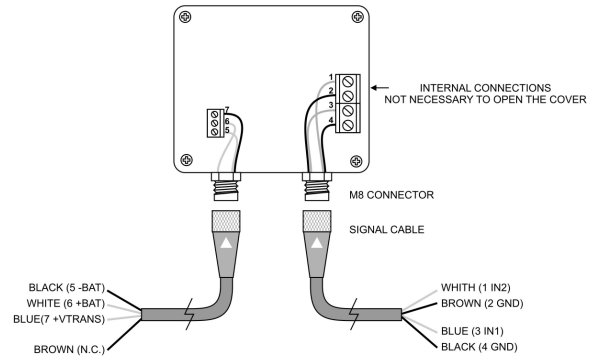


Fig. 9 – IP67 external connectors

Wire connections

| Channels cable (right) | Connection |
|------------------------|------------------------------------|
| Blue | Channel 1 – (3 IN1) – positive (+) |
| Black | Channel 1 – (4 GND) – negative (-) |
| White | Channel 2 – (1 IN2) – positive (+) |
| Brown | Channel 2 – (2 GND) – negative (-) |

| Switch cable (left) | Connection |
|---------------------|---------------------------|
| Blue | Transducer (7 +VTRANS) |
| Black | External Battery (5 -BAT) |
| White | External Battery (6 +BAT) |
| Brown | Not connected |



Fig. 10 – Voltage pulse and dry contact channel 1 input

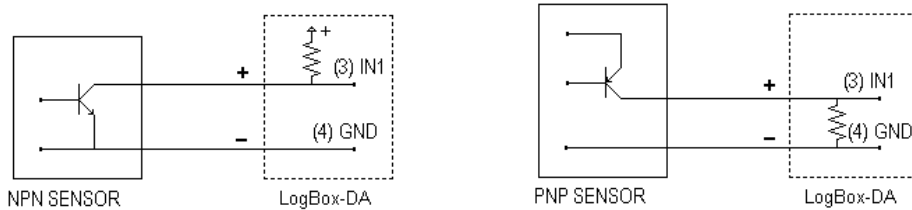


Fig. 11 – NPN and PNP open collector input for channel 1

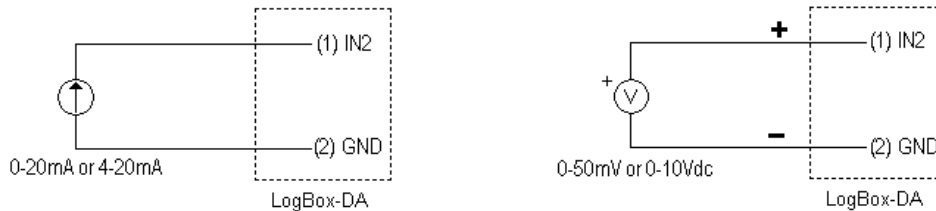


Fig. 12 – Current and voltage inputs for channel 2

INPUT CONNECTIONS – CHANNEL 1

The following figures show connections for the various input types accepted in channel 1. No jumper is required to adjust the channel 1 input type (the circuit is reconfigured automatically according to the input type selected).

INPUT CONNECTIONS – CHANNEL 2

For adequate use of channel 2, set internal J1 and J2 positioning according to the input signal chosen, as shown in the table below (factory default is 4-20mA / 0-20mA signals).

| Input signal | J1 Position | J2 Position |
|-------------------|-------------|-------------|
| 4-20 mA / 0-20 mA | A | A |
| 0-10V | B | B |
| 0-50 mV | C | C |

Table 1 – J1 and J2 positioning

The following figures show connections for different types of signals applied to channel 2.

EXTERNAL BATTERY SWITCH

The example below shows the usage of the external battery switch for commanding the power supply of external devices.

- Channel 2 is configured to 4-20mA input signal. A battery is used to provide power to the 4-20 mA loop. The battery switch "turns on" the power to the loop a moment (defined in the configuration) before the measurement is taken, enabling the transmitter (pressure, temperature, etc) to start up and stabilize the output. This approach saves the battery energy, as the power is turned on only when required (before each measurement).

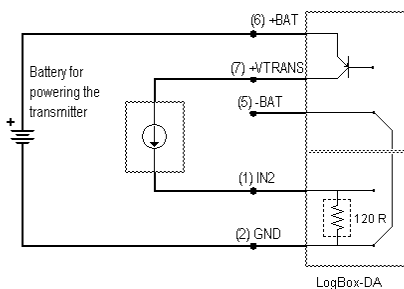



Fig. 13 – Example of the battery switch powering a transmitter.

INSTALLATION RECOMMENDATIONS

- Signal wires should be installed in grounded conduits and away from power or contactor wires.
- Installing RC filters (47 Ω and 100nF, serial) is strongly recommended at contactor coils or any other inductors.
- System failure should always be taken into account when designing a control panel to avoid irreversible damage to equipment or people.

OFFLOADING AND DATA VISUALIZATION

TRANSFERRING RECORDS

Transferring the data to a PC is accomplished by clicking on the button  in the LogChart II software. The IR wand must be pointed to the logger during the process. Data can be collected anytime and saved in files for future analysis (menu "File Save" or "File Save as").

While in offloading process, a progress bar is displayed. The offload time is proportional to the amount of data being transferred (number of records in memory).

After data transfer is completed, the *Graph* window is displayed.

NOTE: The logging is not stopped during the data offload process.

The LogChart-II software includes a help section with detailed usage information.

VISUALIZING THE DATA

Three views are provided for data visualization. The records can be analyzed in the form of Chart (graph) or Table. A third window, called **General Information** window (Fig. 15), shows acquisition details and logger configuration.

A region of interest in the data can be selected (see item **Graph Window**, below). The Graph Window can be printed and the corresponding data exported as text files to other applications, such as spread sheets.

The same windows are created when the data is read from a previously saved file.

After the windows are opened, one can save the data to a file (.lch), print graphs, or export the data from the *General Information* and *Acquisitions Table* windows to a text file (.txt or .dat).

Graph window

The Graph is a convenient tool for analysis. As one moves the mouse in the chart area, the time and the value of the records of each channel are shown in the field located in the bottom of the window.

Zooming in and out are implemented. They are available in the menu "View" or in the tool bar as icons. It is possible to select an area by clicking and dragging the mouse, creating this way a zoom region, starting at the upper left position of the region of interest.

The graphs can be moved vertically by moving the mouse up or down while keeping the mouse right button pressed.

Fig. 14 shows the Graph window.

The Graph window is automatically opened after the offload process. The two other windows (Table and General Information) can be opened accessing the menu or clicking on the corresponding button.

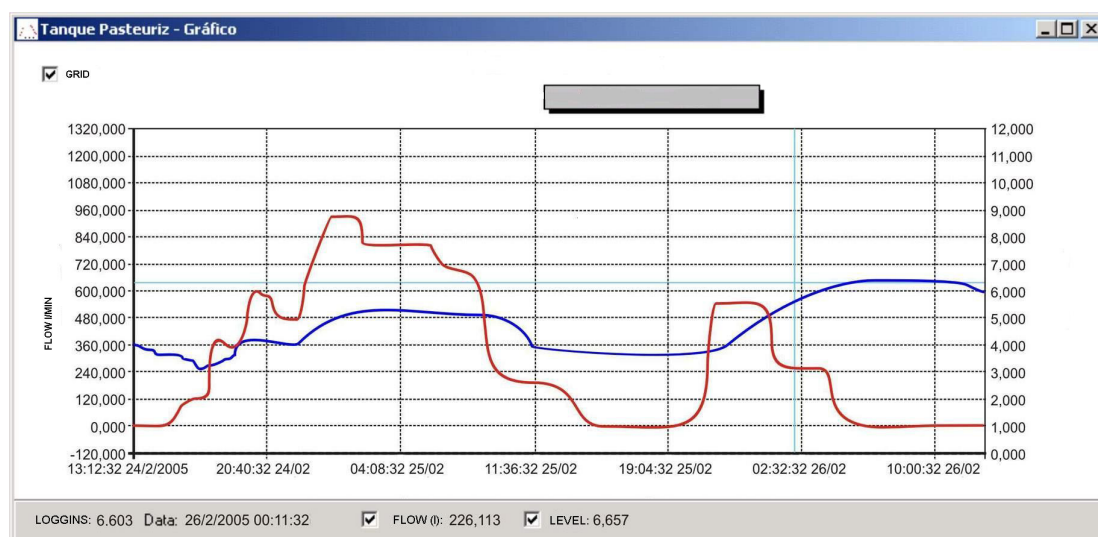


Fig. 14 – Screenshot showing the graphic visualization of logged data

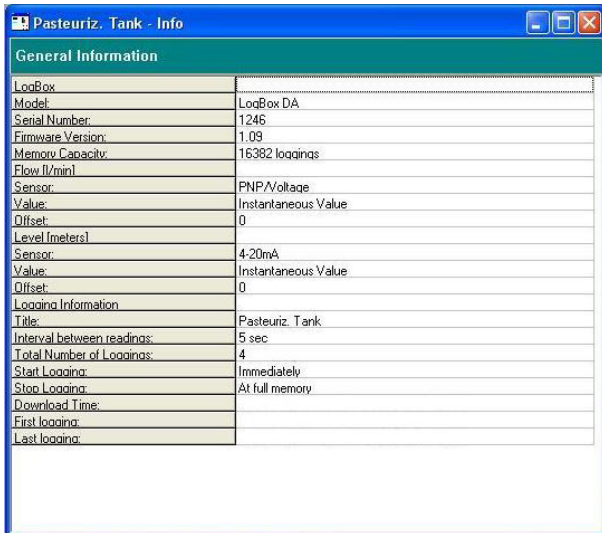


Fig. 15 - General Information window

Acquisitions Table Window

Here the data is presented in a table format, showing the date/time and the records values.

The screenshot shows a window titled 'Pasteuriz. Tank - Readings' with a 'Loggings Table' tab. The data is as follows:

| Record Nr. | Time | Date | Flow [l/min] | Level [meters] |
|------------|----------|-----------|--------------|----------------|
| 00001 | 15:02:44 | 26/7/2005 | 0 | -24,9 |
| 00002 | 15:02:49 | 26/7/2005 | 0 | -25,0 |
| 00003 | 15:02:54 | 26/7/2005 | 0 | -25,0 |
| 00004 | 15:02:59 | 26/7/2005 | 0 | -24,9 |

Fig. 16 – Screenshot showing the acquisitions table

MONITORING ACQUISITIONS

To visualize current measurements in a graph format, use the *Monitor On-Line* command by clicking on the button:



While pointing the IR-LINK3 interface to the logger.

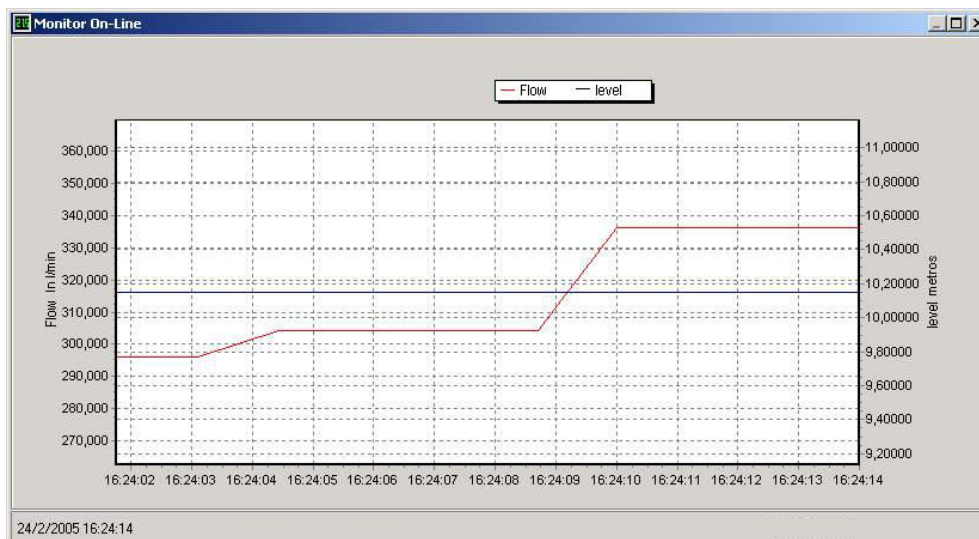


Fig. 17 – Online monitoring graph

OBSERVATIONS

The logger is an electronic device and some basic care is required:

- When opening the device for battery replacement or connecting sensors avoid touching the circuit for not causing damages resulting from static electricity.
- When the device is opened, avoid liquid and/or dust contact.
- Use a screwdriver to open the case cover. Pay attention to batteries polarity: **The positive terminal should be placed directed towards the center of the device.**
- Worn batteries should not be recharged, dismantled or incinerated. After use, batteries must be disposed according to local legal rules or returned to Novus.
- **After placing batteries back to the logger, make sure the cover is firmly attached to the socket.**

MOST FREQUENTLY PROBLEMS

The LED is not flashing.

The LED flashing light is intentionally weak, and it can be difficult to see it in illuminated environments. Make sure it is not flashing at all.

Make sure the battery is installed correctly.

Make sure the battery is not discharged.

Communication with the logger fails

Make sure the COMM port is selected correctly and there is no other program using the same port during communication attempts.

Make sure there is no physical obstacle blocking the infrared signal.

Make sure the cable is well connected to the PC port.

Make sure the port selected does not present any problem.

ADDITIONAL INFORMATION

If you have any doubt concerning this or other NOVUS products, e-mail us at info@novusautomation.com or visit our home page: www.novus.com.br www.novusautomation.com

SPECIFICATIONS

Inputs:

Channel 1: NPN, PNP, Pulse or Dry Contact
 Level 0: 0.0 up to 1.0 Volts
 Level 1: 2.0 up to 24.0 Volts
 Max. frequency: 4000 Hz for NPN, PNP and Pulse
 20 Hz for dry-contact (internal *De-bounce*)
 Input Impedance:
 NPN, PNP and Pulse: 105 k Ω
 Dry contact: Capacitance of 100 nF
 Maximum counting: 65535 per period.

Channel 2: 0-20 mA, 4-20 mA, 0-50 mV and 0-10 Vdc, internally selectable.

Input 2 resolution: 14 bits or 16.384 levels.

Input 2 accuracy: 0.2% of range input signal.

Input Impedance:
 0-20 mA and 4-20 mA: 120 Ω
 0-50 mV: >>10 M Ω
 0-10 Vdc: >120 k Ω

Memory capacity: 64000 (64k)

Interval between readings: Minimum: 1 second, maximum: 18 hours

External battery switch time: 0 to 10 s

Power: 3.6 V lithium battery (1/2 AA)

Estimated autonomy: 200 days with one weekly download and 5 minutes measuring interval. Battery life depends heavily on data retrieval frequency.

Working temperature: From -40°C to 70°C.

Protection: IP65 and IP67 models (see lateral label on product)

Material: ABC + PC case, Polycarbonate film.

Dimensions: 60 x 70 x 35 mm

PACKAGE CONTENTS

Besides this manual, the user must check if the items below accompany the product.

- The electronic logger LogBox-DA;
- Two cables for sensor wiring (IP67 model only).

WARRANTY

Warranty conditions are available on our website www.novusautomation.com/warranty.