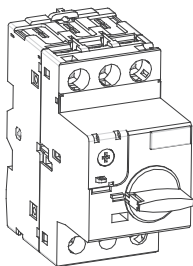
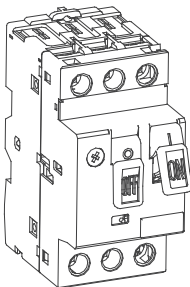


## Ex9SN25A/B AC Motor Starter



Ex9SN25A



Ex9SN25B

Confirm to IEC/EN 60947-2, IEC/EN 60947-4-1, GB 1408.2, GB 14048.4

1/11



### WARNING

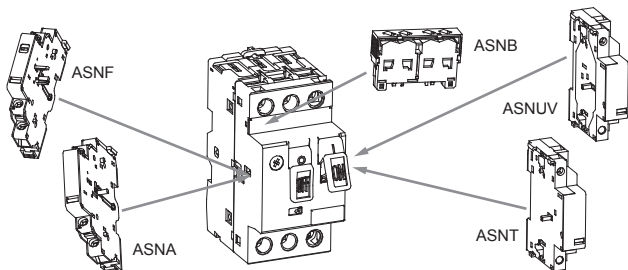
**DO NOT ATTEMPT TO INSTALL OR PERFORM MAINTENANCE ON EQUIPMENT WHILE IT IS ENERGIZED. DEATH, SEVERE PERSONAL INJURY, OR SUBSTANTIAL PROPERTY DAMAGE CAN RESULT FROM CONTACT WITH ENERGIZED EQUIPMENT. ALWAYS VERIFY THAT NO VOLTAGE IS PRESENT BEFORE PROCEEDING WITH THE TASK AND ALWAYS FOLLOW GENERALLY ACCEPTED SAFETY PROCEDURES.**

**NOARK IS NOT LIABLE FOR THE MISAPPLICATION OF ITS PRODUCTS.**

2/11

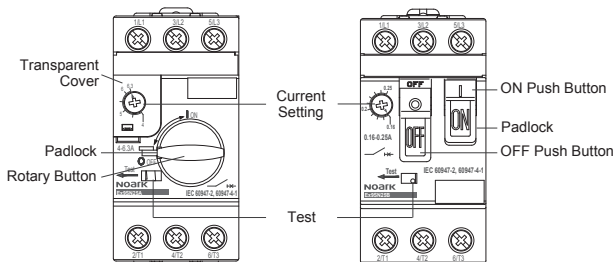
### Assembly Chart

ASNA	Auxiliary Contact (Side Mount, Left Side Only)
ASNB	Auxiliary Contact (Front Mount)
ASNF	Fault Signaling Contact Instantaneous Auxiliary Contact (Left Side Only)
ASNT	Shunt Release
ASNUV	Undervoltage Release



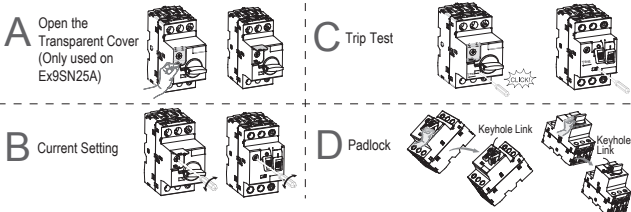
3/11

### Function Name



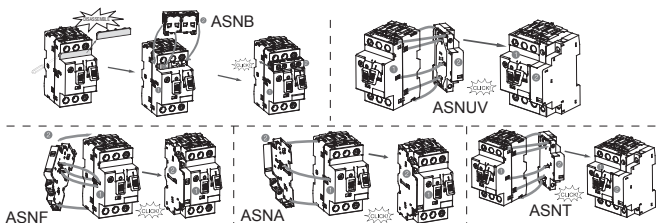
4/11

### Function Instruction

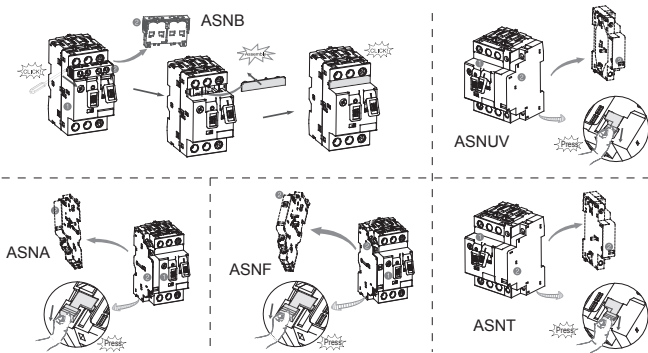


5/11

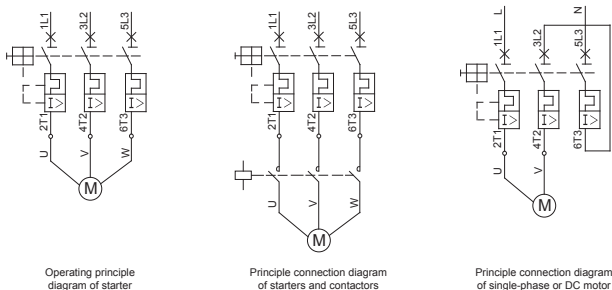
### Accessory Assembly (Ex9SN25A & Ex9SN25B accessories install in same manner)



Disassembly (Ex9SN25A & Ex9SN25B accessories remove in same way)



Circuit Diagram

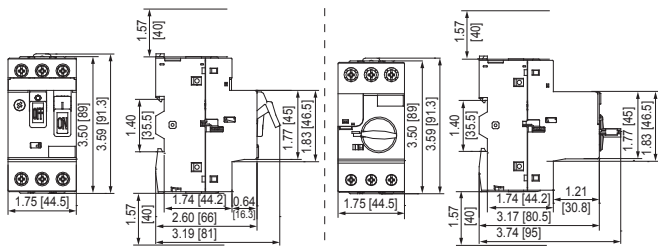


Operating principle diagram of starter

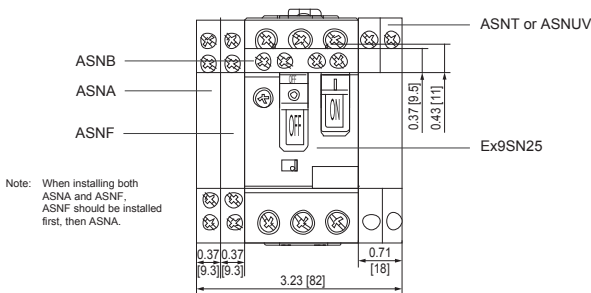
Principle connection diagram of starters and contactors

Principle connection diagram of single-phase or DC motor

Dimension in [mm]



Installation Position of Accessories in [mm]



Tightening Torque and Connection

	M4 15 lb. in [1.7 Nm]							
			AWG [mm <sup>2</sup> ] 16-10 [1.5-6]	AWG [mm <sup>2</sup> ] 16-10 [1.5-6]	AWG [mm <sup>2</sup> ] 18-12 [1-4]	AWG [mm <sup>2</sup> ] 18-12 [1-4]	AWG [mm <sup>2</sup> ] 18-10 [1-6]	AWG [mm <sup>2</sup> ] 18-10 [1-6]

NOARK



Printed with environment-friendly paper.

Copyright NOARK. All rights reserved.

www.noarkusa.com

05/2014