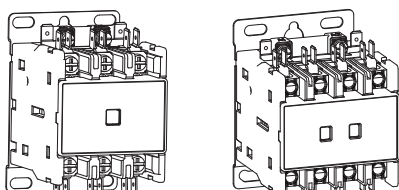


**Ex9CKT20/25/30/32/40A 3/4 Pole**  
**Definite-purpose Contactor**



Z9CKT201702NA

1/8

**⚠ WARNING**

**DO NOT ATTEMPT TO INSTALL OR PERFORM MAINTENANCE ON EQUIPMENT WHILE IT IS ENERGIZED. DEATH, SEVERE PERSONAL INJURY, OR SUBSTANTIAL PROPERTY DAMAGE CAN RESULT FROM CONTACT WITH ENERGIZED EQUIPMENT. ALWAYS VERIFY THAT NO VOLTAGE IS PRESENT BEFORE PROCEEDING WITH THE TASK, AND ALWAYS FOLLOW GENERALLY ACCEPTED SAFETY PROCEDURES.**

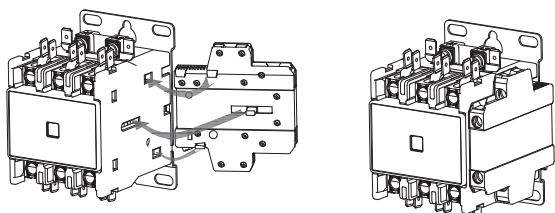
**NOARK IS NOT LIABLE FOR THE MISAPPLICATION OR MISSAPPLICATION OF IT'S PRODUCTS.**

2/8

Model Code	A	a	B	C		D		E		F		G		H	
				mm <sup>2</sup> [AWG]	mm <sup>2</sup> [AWG]	mm <sup>2</sup> [AWG]	mm <sup>2</sup> [AWG]	mm <sup>2</sup> [AWG]	mm <sup>2</sup> [AWG]	mm <sup>2</sup> [AWG]	mm <sup>2</sup> [AWG]	mm <sup>2</sup> [AWG]	mm <sup>2</sup> [AWG]	mm <sup>2</sup> [AWG]	mm <sup>2</sup> [AWG]
Ex9CKT20	M5	M4	2N.m [20Lb.in]	2,5-4 [14-12]	2,5-4 [14-12]	2,5-4 [14-12]	2,5-4 [14-12]	2,5-4 [14-12]	2,5-4 [14-12]	2,5-4 [14-12]	2,5-6 [14-10]	2,5-6 [14-10]	2,5-6 [14-10]	2,5-6 [14-10]	2,5-6 [14-10]
Ex9CKT25	M5	M4	2N.m [20Lb.in]	2,5-4 [14-12]	2,5-4 [14-12]	2,5-4 [14-12]	2,5-4 [14-12]	2,5-4 [14-12]	2,5-4 [14-12]	2,5-4 [14-12]	2,5-6 [14-10]	2,5-6 [14-10]	2,5-6 [14-10]	2,5-6 [14-10]	2,5-6 [14-10]
Ex9CKT30	M5	M4	2N.m [20Lb.in]	2,5-6 [14-10]	2,5-6 [14-10]	2,5-6 [14-10]	2,5-6 [14-10]	2,5-6 [14-10]	2,5-6 [14-10]	2,5-6 [14-10]	Lug: 4-10[12-8] Screw: 4-6[12-10]	Lug: 4-10[12-8] Screw: 4-6[12-10]	Lug: 4-10[12-8] Screw: 4-6[12-10]	Lug: 4-10[12-8] Screw: 4-6[12-10]	Lug: 4-10[12-8] Screw: 4-6[12-10]
Ex9CKT32	M5	M4	2N.m [20Lb.in]	2,5-6 [14-10]	2,5-6 [14-10]	2,5-6 [14-10]	2,5-6 [14-10]	2,5-6 [14-10]	2,5-6 [14-10]	2,5-6 [14-10]	Lug: 4-10[12-8] Screw: 4-6[12-10]	Lug: 4-10[12-8] Screw: 4-6[12-10]	Lug: 4-10[12-8] Screw: 4-6[12-10]	Lug: 4-10[12-8] Screw: 4-6[12-10]	Lug: 4-10[12-8] Screw: 4-6[12-10]
Ex9CKT40	M5	M4	2N.m [20Lb.in]	2,5-6 [14-10]	2,5-6 [14-10]	2,5-6 [14-10]	2,5-6 [14-10]	2,5-6 [14-10]	2,5-6 [14-10]	2,5-6 [14-10]	Lug: 4-10[12-8] Screw: 4-6[12-10]	Lug: 4-10[12-8] Screw: 4-6[12-10]	Lug: 4-10[12-8] Screw: 4-6[12-10]	Lug: 4-10[12-8] Screw: 4-6[12-10]	Lug: 4-10[12-8] Screw: 4-6[12-10]

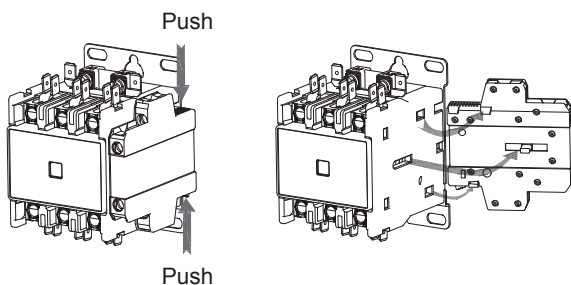
3/8

**Installation of AXFC11(Q)**



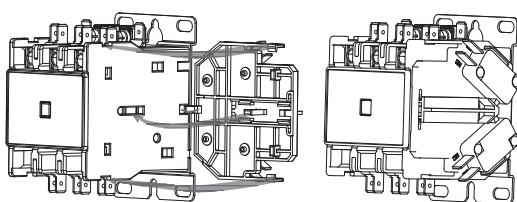
4/8

**Disassembly of AXFC11(Q)**



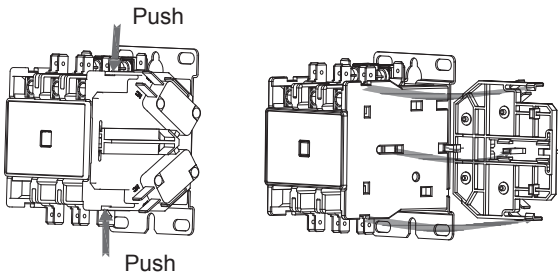
5/8

**Installation of AXFD11/22**

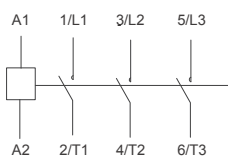


6/8

**Disassembly of AXFD11/22**



7/8



**Disconnect all power before working on equipment.**  
**Coupez toutes les alimentations avant de travailler sur l'équipement.**  
**Desconecte la alimentación antes de trabajar en equipo.**

8/8

