

# PTE Series D56mm Modular Style LED Tower Light



PTE series tower Lights combine the latest LED technology with UL safety technology.

With a new concept and innovative design, PTE series light towers are ideal for factory automation and many applications.

- Stylish design
- LED modular components
- Bright & even light distribution through prism-cut lenses
- Fast & easy assembly with inter-locking construction
- 8 base mount options
- Optional 80dB Buzzer (fixed or adjustable volume)
- IP65 rated
- RoHS compliant



## Ordering Information

PTE - A P F - 3 02 - RYG - B (H) W

① ② ③ ④ ⑤ ⑥ ⑦ ⑧ ⑨

\* Options

### 1. Body Unit

			Apply to Mounting style
<b>S</b>	Flat Based Body	Code7	<b>C</b>
<b>A</b>	Pole Mount Standard Body	Code7 + Code10	<b>G/P/R/M/W/D/J</b>
<b>D</b>	Short Body	Code6	<b>P/R/M/W/D/J</b>
<b>T</b>	Terminal Body	Code15	<b>G/P/R/M/W/D/J</b>
<b>L</b>	Small Surface Body	Code17	<b>C</b>

Note: "D", "L" Type - Power Supply 24V AC/DC only

### 2. Mounting Style

<b>C</b>	Surface Mount	Code 18
<b>G</b>	Plastic mount base (MAM-B070B)	Code 8 + Code 16
<b>P</b>	Pole + Plastic mount base (MAM-B070D)	Code 8 + Code 11
<b>R</b>	Pole + Rotate plastic mount base (MAM-B070R)	Code 8 + Code 20
<b>M</b>	Pole + Plastic M20 screw mount base (MAM-B025)	Code 8 + Code 9
<b>W</b>	Pole + Wall mount brack (MAP-DS40)	Code 8 + Code 12
<b>D</b>	Pole + Aluminum Pole mount base (MAM-DS32)	Code 8 + Code 22
<b>J</b>	Pole Adjustable Type	Code 21 + Code 11

Note: R Type Mount base - 180-degree revolution

### 3. Light Style

	Steady Light
<b>F</b>	Steady + Flashing Light
<b>B</b>	Steady + Buzzer (Fixed Sound)
<b>V</b>	Steady + Buzzer (Adjustable Sound)
<b>Z</b>	Steady + Flashing + Buzzer (Fixed Sound)
<b>X</b>	Steady + Flashing + Buzzer (Adjustable Sound)

### 4. Number of Stacks

<b>1</b>	1 Light
<b>2</b>	2 Lights
<b>3</b>	3 Lights
<b>4</b>	4 Lights
<b>5</b>	5 Lights

Note: Buzzer type - up to 4 tiers

### 5. Power Supply

<b>02</b>	24V AC/DC
<b>FF</b>	90~240V AC

### 6. LED Colors (Top to Bottom)

<b>R</b>	Red	<b>B</b>	Blue
<b>Y</b>	Yellow	<b>C</b>	Clear
<b>G</b>	Green		

### Options

#### 7. Body Colors

<b>B</b>	Black
----------	-------

Note: Standard Body Color - White Ivory.

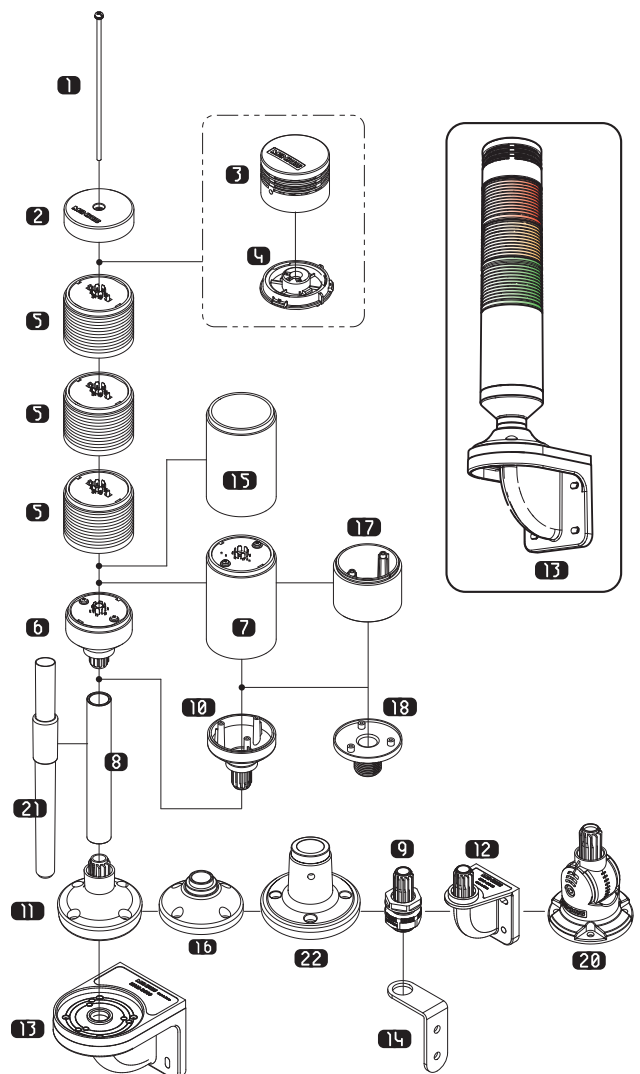
#### 8. Option

<b>(V)</b>	Continuous Flashing Flashing Cycle: (240Times/minute)
<b>(C)</b>	Buzzer Continuous sound (Sound: Pt-----)
<b>(H)</b>	Buzzer 100dB type - Adjustable Sound - Model: MPZ-56H

#### 9. Lens Colors

<b>W</b>	All Lens Colors - Clear
----------	-------------------------

## Exploded View / Part Code



See Page 35 ~ 37  
for Mounting Options and Accessories.

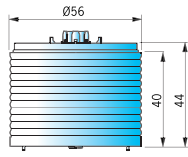
## Specifications

### Body Units

Operation/Function	Steady, Flashing, Buzzer
Power Supply	AC/DC 24V, AC 90 ~ 240V 50/60Hz
Lens Color	Red, Yellow, Green, Blue & Clear
Maximum Tier	5 Tiers (Buzzer type: 4 Tiers)
Flash Rate (±10%)	80times/minute, <Option V-type: 240times/minute>
Vibration	0.75mm at 10~55Hz
Ambient Temperature	-15 to 40°C
Storage Temperature	-20 to 70°C
Ambient Humidity	45 ~ 85% RH
Degree of Protection	IP65 / IP40 (with Buzzer)
Approvals	CE, UL, RoHS
Recommended Wire Size	1007 UL / 22AWG

### Current consumption

LED Color Unit	24V AC	90~240V AC	
Current ±10%	Red	33mA	17mA
	Yellow	27mA	17mA
	Green	42mA	22mA
	Blue	42mA	22mA
	Clear	42mA	22mA
Weight	App. 43.0g		



### Buzzer Kits

Type	Standard Buzzer Sound - pi pi pi pi		
Model	MPZ-56F	MPZ-56G	MPZ-56H
Level Style	Fixed Sound	Adjustable Sound Level	Adjustable Sound Level
Sound Level	80±5dB at 1M	10~80±5dB at 1M	10~100±5dB at 1M
Current / Power	30mA / 0.72W	30mA / 0.72W	150mA / 3.6W

## Dimensions <Unit: mm>

### Standard Pole Length : 225mm

▼ PTE-AD, PTE-TD  
▼ PTE-AP, PTE-TP

▼ PTE-DD  
▼ PTE-DP

▼ PTE-AM

▼ PTE-AJ <Standard Type>

▼ PTE-DR

▼ PTE-AG

▼ PTE-LC  
▼ PTE-SC  
▼ PTE-TC

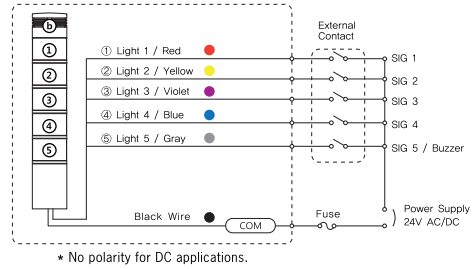
※ Pole Height Control Type

	H	HB
1 Light	56	81
2 Lights	97	122
3 Lights	138	163
4 Lights	179	204
5 Lights	220	

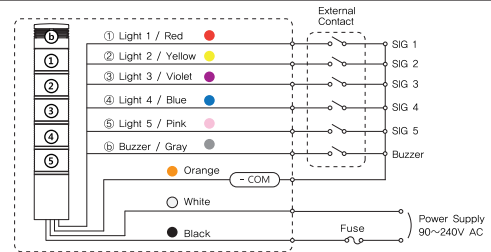
※ The above specifications are changeable at anytime without notice.

## Wiring Diagram

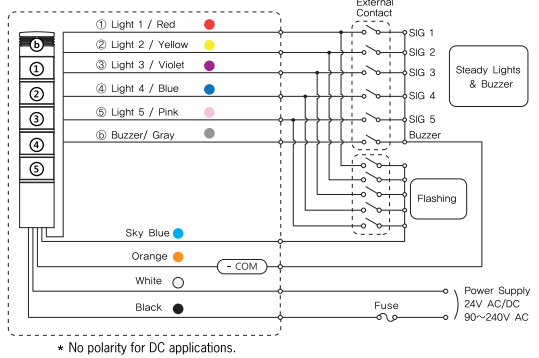
### 24V AC/DC Steady Lights (with Buzzer)



### 90 ~ 240V AC Steady Lights (with Buzzer)

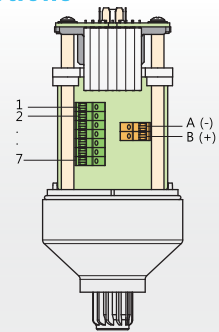


### 24VAC/DC, 90~240V AC Steady or Flashing Lights (with Buzzer)



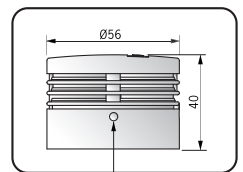
## Terminal Type Connections

Pin #	Description
1	Light 1
2	Light 2
3	Light 3
4	Light 4
5	Light 5 or Buzzer
6	Steady COM
7	Flashing COM
A	Power Supply (-)
B	Power Supply (+)



**Recommended Wire Size**  
UL 1007 AWG 22~16  
UL 1430 AWG 22~16  
※ Use 75°C CU Wire only.

### Buzzer Kits Dimensions



Sound Level Adjuster  
Model: MPZ-56G, MPZ-56H