

# MT5C/8C Ø56mm / Ø85mm Steady & Flashing with Buzzer

## TOWER LIGHTS



### Incandescent or LED

- Optional LED bulbs available
- Selectable Steady or Flashing Modes
- Prism-cut lenses for even light distribution
- Surface, Pole or Wall Mounted (Order poles & bases separately)
- Wire leads or Terminal connection
- Add-on Buzzer (80 dB) kit available
- NEMA 12, 3R / IP56 rated



### Order Information

<b>MT</b>	<b>5</b>	<b>C</b>	<b>5</b>	<b>A</b>	<b>L</b>	-	<b>RYGBC</b>
	①	②	③	④	⑤		⑥

① Lens Diameter	<b>5</b>	Ø56mm
	<b>8</b>	Ø85mm

② Light Style	<b>C</b>	Steady & Flashing
------------------	----------	-------------------

③ Number of Stacks	<b>1</b>	1 Light
	<b>2</b>	2 Lights
	<b>3</b>	3 Lights
	<b>4</b>	4 Lights
	<b>5</b>	5 Lights

④ Power Supply	<b>A</b>	DC/AC 24V
	<b>B</b>	AC 110~120V
	<b>C</b>	AC 220~240V

⑤ Connection	<b>L</b>	Lead Wires
	<b>T</b>	Screw Terminals

⑥ Lens Colors (top to bottom)	<b>R</b>	Red
	<b>Y</b>	Yellow
	<b>G</b>	Green
	<b>B</b>	Blue
	<b>C</b>	Clear

### Specifications

Power Supply		24V AC/DC	110~120V AC	220~240V AC
Current Draw	Bulb	1 Stack	0.4 A	0.08 A
		2 Stack	0.8 A	0.16 A
		3 Stack	1.2 A	0.24 A
		4 Stack	1.6 A	0.32 A
		5 Stack	2.0 A	0.4 A
	LED	Per Stack	180 mA	35 mA
Buzzer		30 mA		
LED Life-Span		10,000 hours (minimum)		
Sound Level		80 dB		
Flashing rate		80 times/minute		
Rating		NEMA 12, 3R / IP 56		
Approvals		UL, cUL, CE		

### Optional Orders

#### Buzzer Kits

\*Note: Max. number of tier including Buzzer is 5.

MPZ - **56** **A**

Power Supply	
<b>A</b>	DC/AC 24V, 80dB (30mA)
<b>B</b>	AC 110~120V, 80dB (30mA)
<b>C</b>	AC 220~240V, 80dB (30mA)

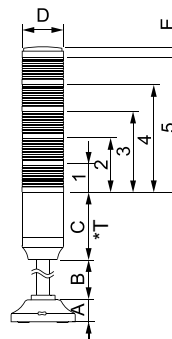
Buzzer Size (Diameter)	
<b>56</b>	Ø56mm (for MT5C Series)
<b>85</b>	Ø85mm (for MT8C Series)

#### Replacement Parts

Part	Image	Model	Voltage
LED		LED-T15-D-24-(□)	DC 24V
		LED-T15-D-110-(□)	AC 110~120V
		LED-T15-D-220-(□)	AC 220~240V
BULB		MAB-T15-D-024-10	DC/AC 24V, 10W
		MAB-T15-D-120-10	AC 110~120V, 10W
		MAB-T15-D-240-10	AC 220~240V, 10W
Lens	-	MAL-5(□)	Ø56mm
		MAL-8(□)	Ø85mm

(□): indicates color of LED or Lens; R, Y, G, B or C

### Dimensions



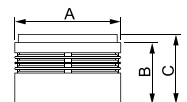
Symbol	Model	
	MT5C	MT8C
<b>A</b>	29	29
<b>B</b>	185	185
<b>C</b>	95	108
*T	173	188
<b>D</b>	56	85
<b>E</b>	15	15
<b>1</b>	68	68
<b>2</b>	136	136
<b>3</b>	204	204
<b>4</b>	272	272
<b>5</b>	340	340

\*T: Terminal board style

unit: mm

#### Buzzer Kit

MPZ-56  
MPZ-85



Symbol	MPZ-56	MPZ-85
<b>A</b>	56	86
<b>B</b>	48	50
<b>C</b>	54	56

See Page 13-14  
for Mounting Options and Accessories

# MT4B/5B/8B Ø45mm / Ø56mm / Ø86mm Steady

## TOWER LIGHTS



### Incandescent or LED

- Optional LED bulbs available (12VDC & 24VDC ONLY)
- Long life and reliability
- Prism-cut lenses for even light distribution
- Surface, Pole or Wall Mounted  
(Order poles & bases separately)
- Wire leads or Terminal connection
- NEMA 12, 3R / IP56 rated



### Order Information

MT	4	B	5	A	L	-	RYGBC
	①	②	③	④	⑤		⑥
<b>① Lens Diameter</b>	4	5	8				
				Ø45mm			
				Ø56mm			
				Ø85mm			
<b>② Light Style</b>	B		Steady				
<b>③ Number of Stacks</b>	1		1 Light				
	2		2 Lights				
	3		3 Lights				
	4		4 Lights				
	5		5 Lights				
<b>④ Power Supply</b>	D		DC/AC 12V				
	A		DC/AC 24V				
	B		AC 110~120V				
	C		AC 220~240V				
<b>⑤ Connection</b>	L		Lead Wires				
<b>⑥ Lens Colors (top to bottom)</b>	R		Red				
	Y		Yellow				
	G		Green				
	B		Blue				
	C		Clear				

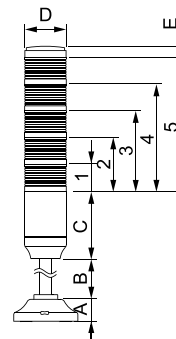
### Optional Orders

#### Replacement Parts

			Part Number	Power Supply/Specification
MT4B	LED		LED-T09-S-12-(□)	DC 12V
			LED-T09-S-24-(□)	DC 24V
	BULB		MAB-T09-S-012-05	DC/AC 12V, 5W
			MAB-T09-S-024-05	DC/AC 24V, 5W
			MAB-T09-S-130-05	AC 110~120V, 5W
Lens	—	MAL-4(□)	Ø45mm	
MT5B MT8B	LED		LED-T15-D-12-(□)	DC 12V
			LED-T15-D-24-(□)	DC 24V
			LED-T15-D-110-(□)	AC 110~120V
			LED-T15-D-220-(□)	AC 220~240V
	BULB		MAB-T15-D-012-10	DC/AC 12V, 10W
			MAB-T15-D-024-10	DC/AC 24V, 10W
			MAB-T15-D-120-10	AC 110~120V, 10W
			MAB-T15-D-240-10	AC 220~240V, 10W
	Lens	—	MAL-5(□)	Ø56mm
			MAL-8(□)	Ø86mm

(□): indicates color of LED or Lens; R, Y, G, B or C

### Dimensions



unit: mm

Symbol	Model		
	MT4B	MT5B	MT8B
A	29	29	29
B	185	185	185
C	72	95	108
D	45	56	86
E	10.5	15	15
1	46	68	68
2	92	136	136
3	138	204	204
4	184	272	272
5	230	340	340

### Specifications

Power Supply		12V AC/DC	24V AC/DC	100-120V AC	220-240V AC
Current Draw	1 Stack	0.8 A	0.4 A	0.08 A	0.04 A
	2 Stack	1.7 A	0.8 A	0.17 A	0.08 A
	3 Stack	2.5 A	1.2 A	0.25 A	0.12 A
	4 Stack	3.3 A	1.7 A	0.33 A	0.17 A
	5 Stack	4.2 A	2.1 A	0.4 A	0.2 A
Flashing rate	80 times/minute				
Rating	IP 56				

See Page 13-14  
for Mounting Options and Accessories

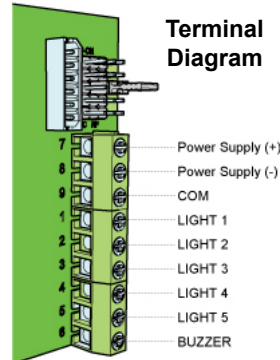
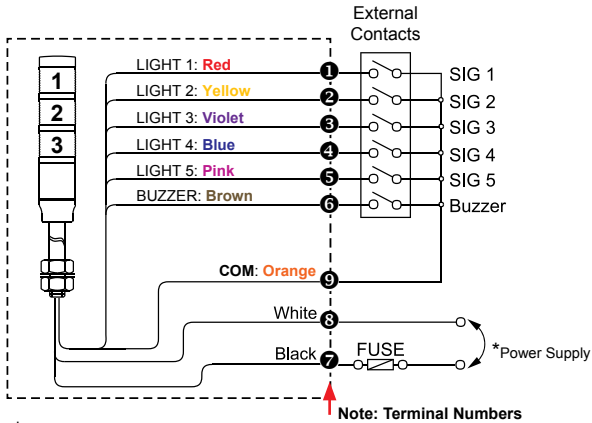
# MT5C/8C & MT4B/5B/8B Wiring Diagram

## MT5C/8C

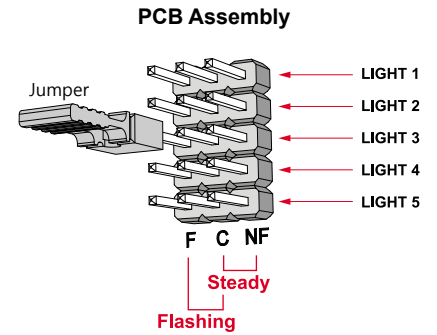
### DC/AC 24V

#### Steady or Flashing (with Buzzer)

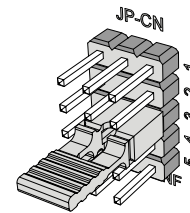
MT5C□AL-□□□□ MT8C□AL-□□□□  
 MT5C□AT-□□□□ MT8C□AT-□□□□



### Steady/Flashing Selection

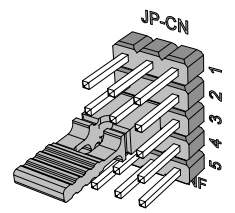


Example 1



LIGHT 3: Steady Function

Example 2

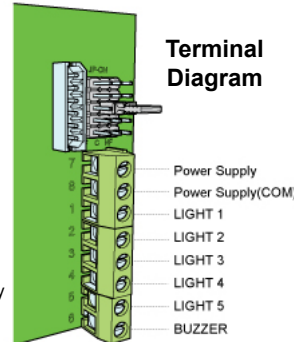
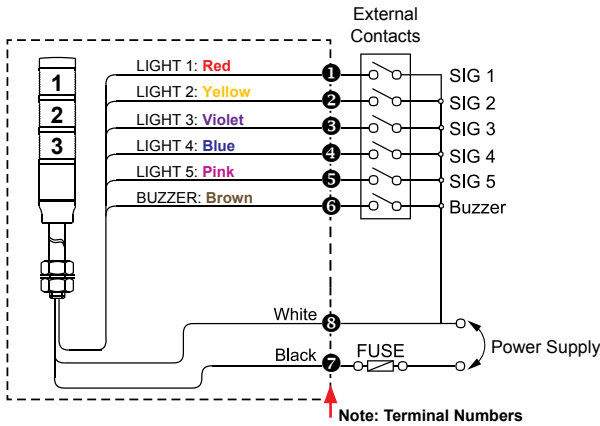


LIGHT 3: Flashing Function

### AC 110~120V AC 220~240V

#### Steady or Flashing Lights (with Buzzer)

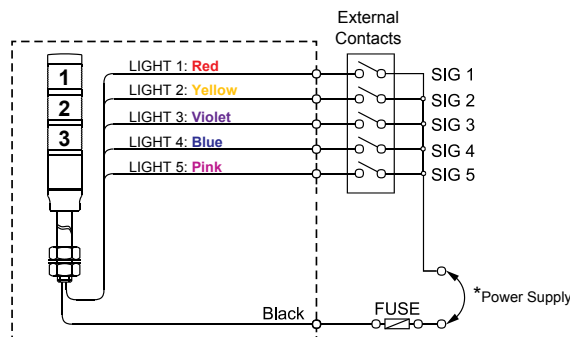
MT5C□BL-□□□□ MT8C□BL-□□□□  
 MT5C□BT-□□□□ MT8C□BT-□□□□  
 MT5C□CL-□□□□ MT8C□CL-□□□□  
 MT5C□CT-□□□□ MT8C□CT-□□□□



## MT4B/5B/8B

### AC/DC 12V AC 110~120V AC/DC 24V AC 220~240V

#### Steady Lights

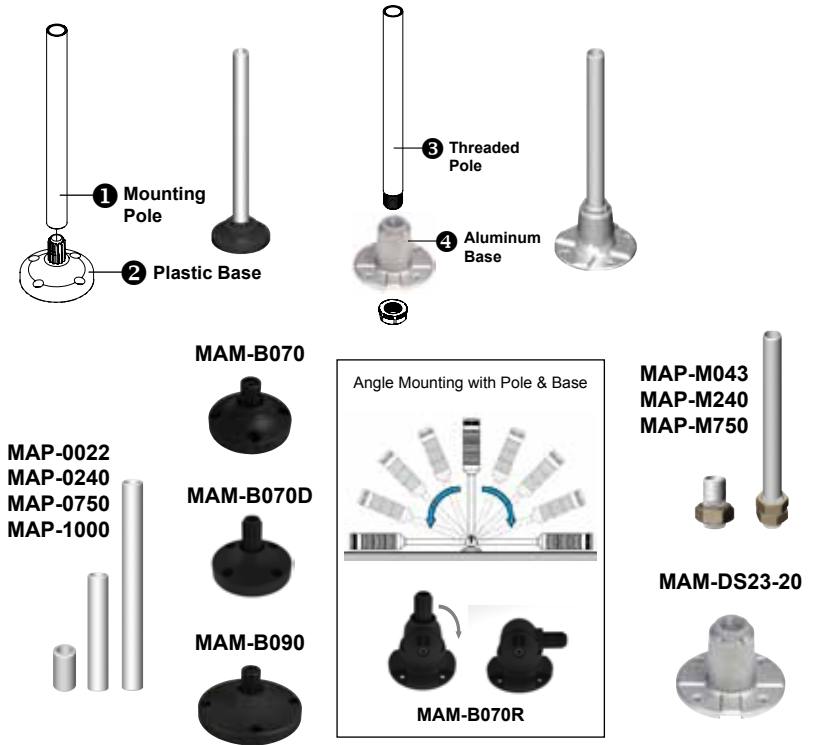


\* No polarity for DC applications.

**Pole Mounting with Base**

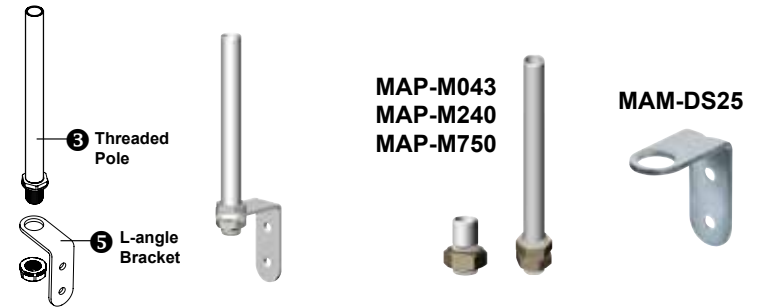
Part	Part #	Description
<b>1</b>	*MAP-0022	Ø20mm, 0.87 in (22 mm) pole
	MAP-0240	Ø20mm, 9.45 in (240 mm) pole
	MAP-0750	Ø20mm, 29.53 in (750 mm) pole
	MAP-1000	Ø20mm, 39.37 in (1000 mm) pole
<b>2</b>	MAM-B070	Ø70mm Plastic Base
	MAM-B070D	Ø70mm Plastic Base with Water-Proof Rubber Gasket
	MAM-B070R	Ø70mm Plastic Base with 180° rotating pole holder
	MAM-B090	Ø90mm Plastic Base
<b>3</b>	MAP-M043	Ø20mm, 1.69 in (43 mm) threaded pole with 1 nut
	MAP-M240	Ø20mm, 9.45 in (240 mm) threaded pole with 2 nuts
	MAP-M750	Ø20mm, 29.53 in (750 mm) threaded pole with 1 nut
<b>4</b>	MAM-DS23-20	Aluminum Base

\* MAM-0022 CANNOT be used with PTE & PTM Series.



**L-angle Mounting with Bracket**

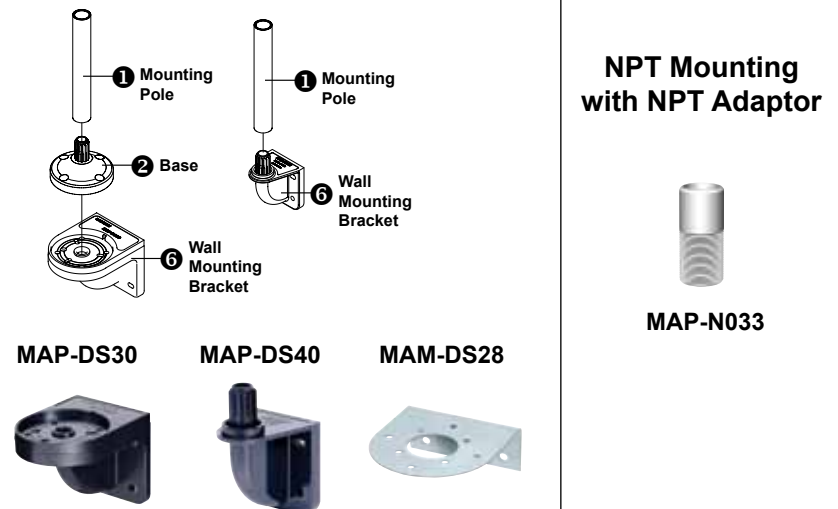
Part	Part #	Description
<b>3</b>	MAP-M043	Ø20mm, 1.69 in (43 mm) threaded pole with 1 nut
	MAP-M240	Ø20mm, 9.45 in (240 mm) threaded pole with 2 nuts
	MAP-M750	Ø20mm, 29.53 in (750 mm) threaded pole with 1 nut
<b>5</b>	MAM-DS25	L-angle Bracket



**Wall Mounting with Bracket**

Part	Part #	Description
<b>1</b>	*MAP-0022	Ø20mm, 0.87 in (22 mm) pole
	MAP-0240	Ø20mm, 9.45 in (240 mm) pole
	MAP-0750	Ø20mm, 29.53 in (750 mm) pole
	MAP-1000	Ø20mm, 39.37 in (1000 mm) pole
<b>2</b>	MAM-B070	Ø70mm Plastic Base
	MAM-B070D	Ø70mm Plastic Base with Water-Proof Rubber Gasket
<b>6</b>	MAP-DS30-BLK	Plastic Wall Mounting Bracket, Black (Pole & Base required)
	MAP-DS30-BGE	Plastic Wall Mounting Bracket, Beige (Pole & Base required)
	MAP-DS40-BLK	Plastic Wall Mounting Bracket, Black (Pole required)
	MAP-DS40-BGE	Plastic Wall Mounting Bracket, Beige (Pole required)
	MAM-DS28	Metal Wall Mounting Bracket (Pole & Base required)

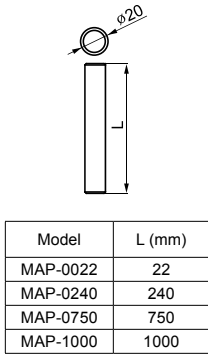
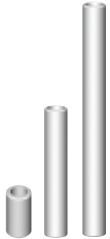
\* MAM-0022 CANNOT be used with PTE & PTM Series.



# Accessories

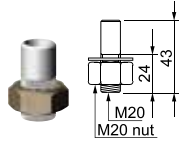
## Mounting Poles

MAP-0022  
MAP-0240  
MAP-0750  
MAP-1000

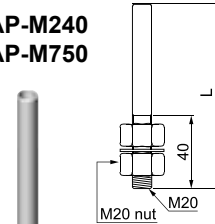


## Threaded Poles

MAP-M043



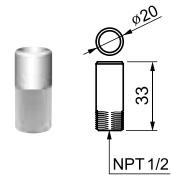
MAP-M240  
MAP-M750



Model	L (mm)
MAP-M240	240
MAP-M750	750

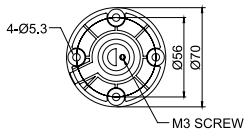
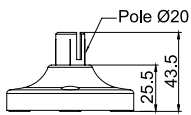
## NPT Adaptor

MAP-N033

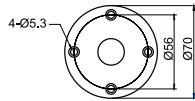
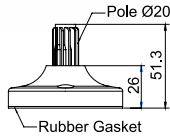


## Mounting Bases

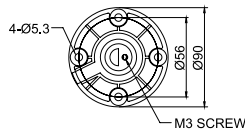
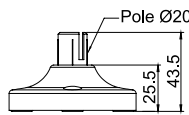
MAM-B070



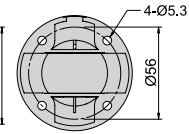
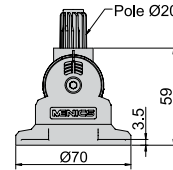
MAM-B070D



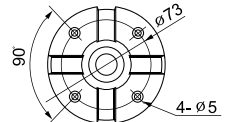
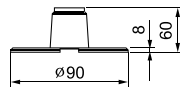
MAM-B090



MAM-B070R

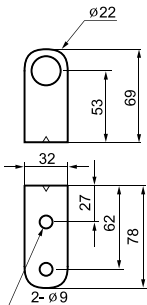


MAM-DS23-20

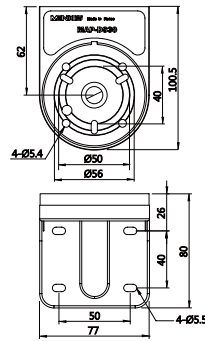


## Wall Mount Brackets

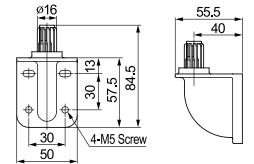
MAM-DS25



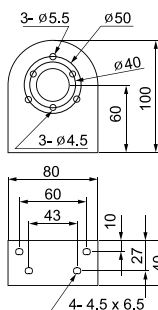
MAP-DS30



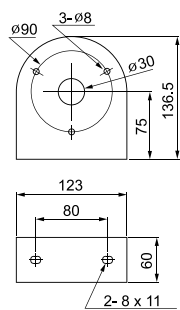
MAP-DS40



MAM-DS26



MAM-DS27



MAM-DS28

