

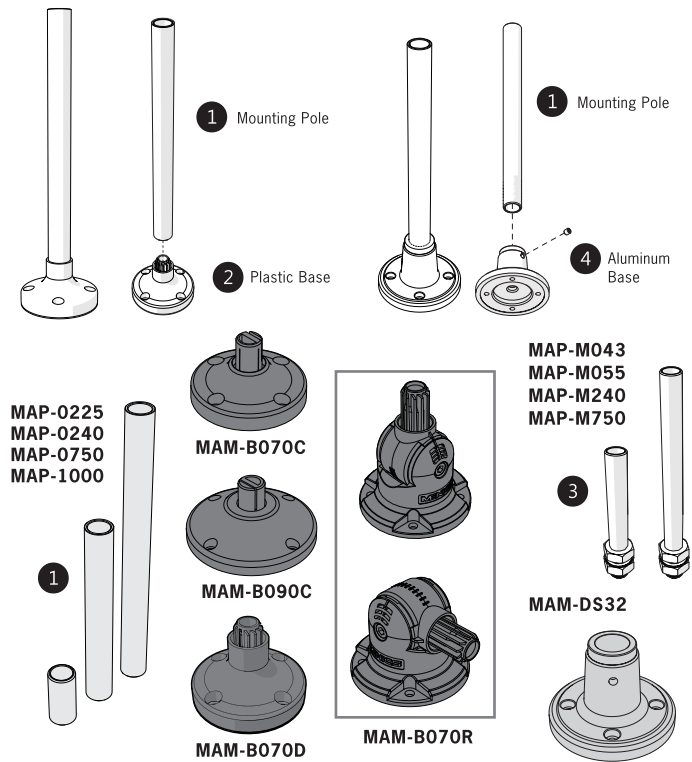
Tower Light Mounting Options

PTE , PTM , PTD , PME , MT5C/8C , MT4B/5B/8B

Pole Mounting with Base

No	Part #	Description
①	MAP-0225	Ø20mm, 8.86 in (Length 225mm) Pole
	MAP-0240	Ø20mm, 9.45 in (Length 240mm) Pole
	MAP-0750	Ø20mm, 29.53 in (Length 750mm) Pole
	MAP-1000	Ø20mm, 39.37 in (Length 1000mm) Pole
②	MAM-B070C	Ø70mm Plastic Base
	MAM-B070D	Ø70mm Plastic Base With Water-Proof Rubber Gasket
	MAM-B070R	Ø70mm Plastic Base With 180° Rotating Pole Base
	MAM-B090C	Ø90mm Plastic Base
③	MAP-M043	Ø20mm, 1.69 in (Length 43mm) Pole Threaded pole With 2 Nut (M20 x 1.5Pitch)
	MAP-M055	Ø20mm, 2.17 in (Length 55mm) Pole Threaded pole With 2 Nut (M20 x 1.5Pitch)
	MAP-M240	Ø20mm, 9.45 in (Length 240mm) Pole Threaded pole With 2 Nut (M20 x 1.5Pitch)
	MAP-M750	Ø20mm, 29.53 in (Length 750mm) Pole Threaded pole With 2 Nut (M20 x 1.5Pitch)
④	MAM-DS32	Ø20mm Aluminum pole mount base - Die Casting

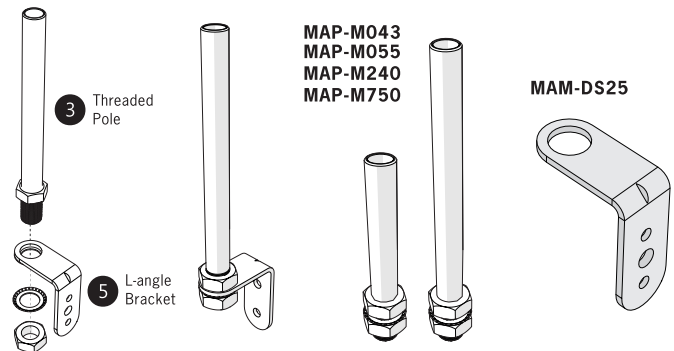
* Aluminum Pole Length Options



L-angle Mounting with Bracket

No	Part #	Description
③	MAP-M043	Ø20mm, 1.69 in (Length 43mm) Pole Threaded pole With 2 Nut
	MAP-M240	Ø20mm, 9.45 in (Length 240mm) Pole Threaded pole With 2 Nut
	MAP-M750	Ø20mm, 29.53 in (Length 750mm) Pole Threaded pole With 2 Nut
⑤	MAM-DS25	L-angle Bracket

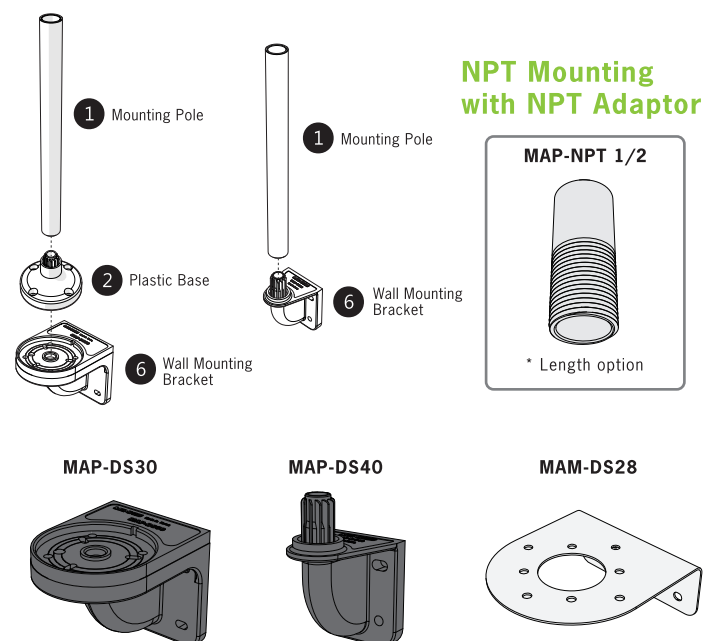
* Aluminum Pole Length Options



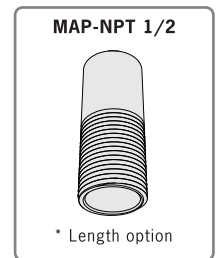
Wall Mounting with Bracket

No	Part #	Description
①	MAP-0225	Ø20mm, 8.86 in (Length 225mm) Pole
	MAP-0240	Ø20mm, 9.45 in (Length 240mm) Pole
	MAP-0750	Ø20mm, 29.53 in (Length 750mm) Pole
	MAP-1000	Ø20mm, 39.37 in (Length 1000mm) Pole
②	MAM-B070C	Ø70mm Plastic Base
	MAM-B070D	Ø70mm Plastic Base With Water-Proof Rubber Gasket
⑥	MAP-DS30-BLK	Plastic Wall Mounting Bracket, Black Color (Pole & Base required)
	MAP-DS30-BGE	Plastic Wall Mounting Bracket, Beige Color (Pole & Base required)
	MAP-DS40-BLK	Plastic Wall Mounting Bracket, Black Color (Pole & Base required)
	MAP-DS40-BGE	Plastic Wall Mounting Bracket, Beige Color (Pole & Base required)
	MAM-DS28	Matal Wall Mounting Bracket (Pole & Base required)

* Aluminum Pole Length Options



NPT Mounting with NPT Adaptor



ACCESSORIES

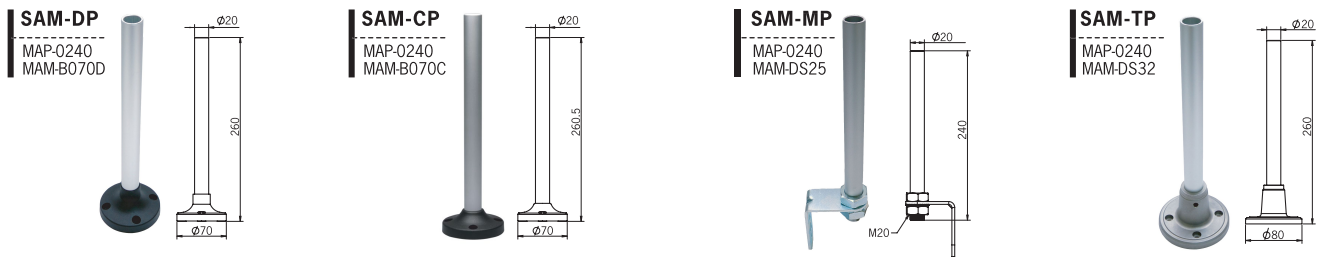
Accessories

Ordering information and Dimensions (UNIT : mm)

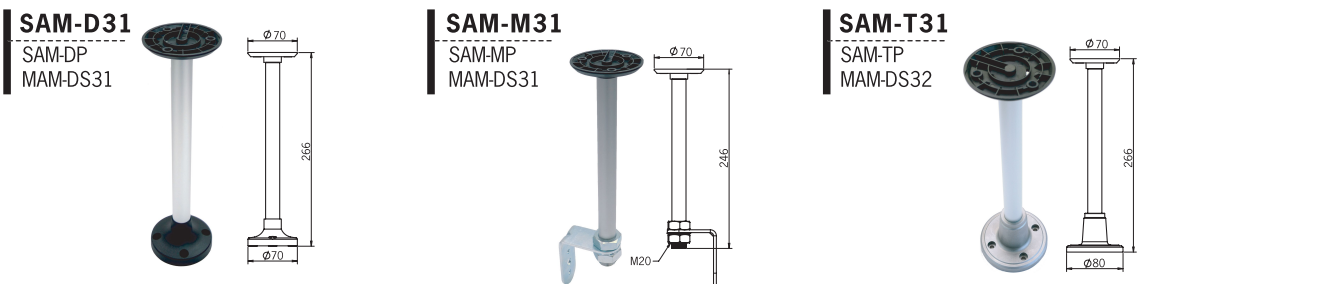
Semi-assembled pole mounting base

LED type: PTE, PTM, PTD, PME series

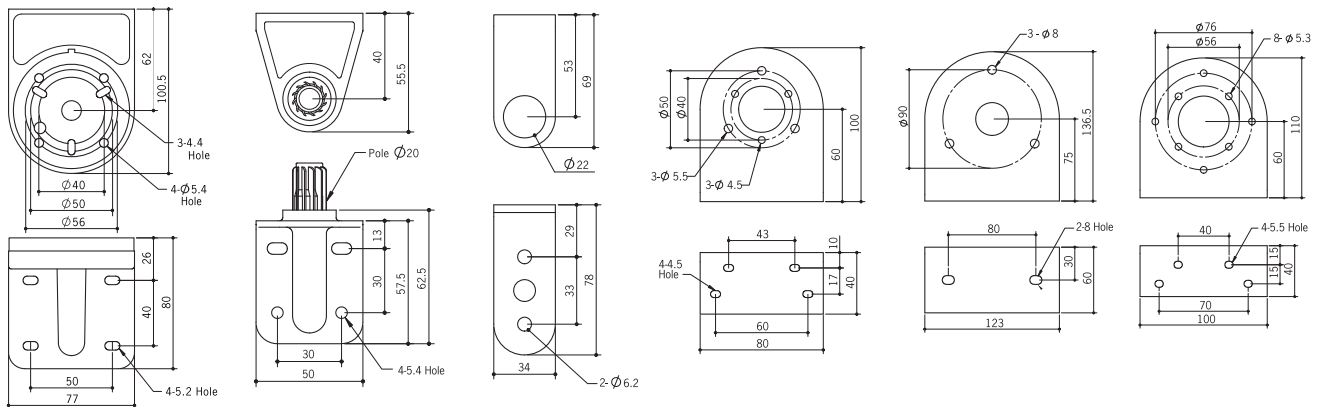
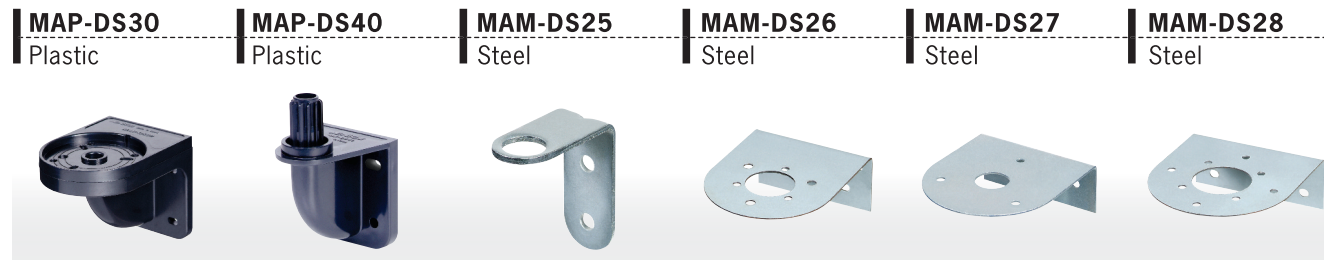
Bulb type: MT4, MT5, MT8 series



MS86 series dedicated part

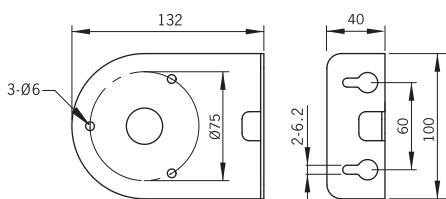
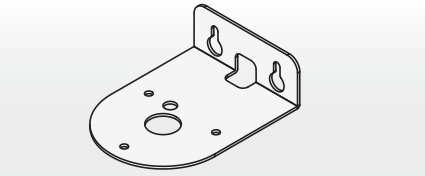


Wall Mounting Bracket



MAM-DS29

Steel



Model

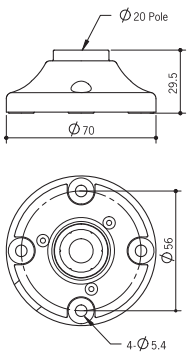
Available Product

MAP-DS30-BLK	Plastic Wall Mounting Bracket, Black Color
MAP-DS30-BGE	Plastic Wall Mounting Bracket, Beige Color
MAP-DS40-BLK	Plastic Wall Mounting Bracket, Black Color
MAP-DS40-BGE	Plastic Wall Mounting Bracket, Beige Color
MAM-DS25	L-angle Steel Bracket
MAM-DS26	Wall Mounting Bracket (ML and AS Series, MS86 Series)
MAM-DS27	Wall Mounting Bracket (AVG Series)
MAM-DS28	Wall Mounting Bracket (Tower Light)
MAM-DS29	Wall Mounting Bracket (MS115 Series)

Mount Base

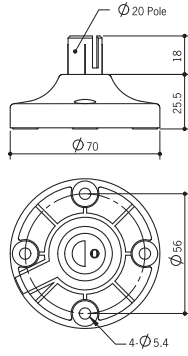
MAM-B070B

Plastic



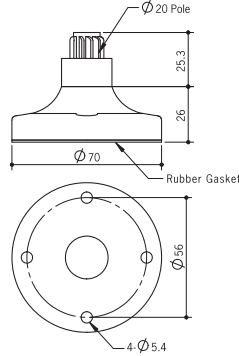
MAM-B070C

Plastic



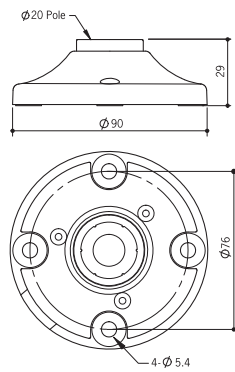
MAM-B070D

Plastic



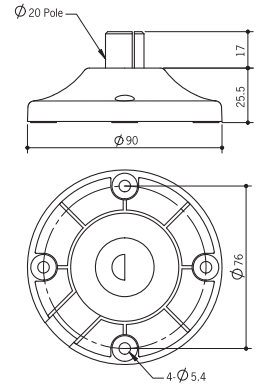
MAM-B090B

Plastic



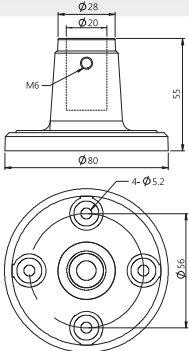
MAM-B090C

Plastic



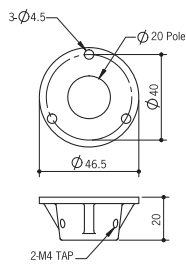
MAM-DS32

Aluminum



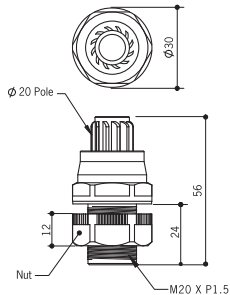
MAM-DS24

Aluminum



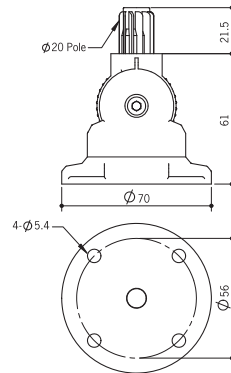
MAM-I025

Plastic



MAM-B070R

Plastic



Model

Available Product

MAM-B070B	Tower Light Diameter 45, 56mm Series Base Bracket (Direct mounting)
MAM-B070C	Tower Light Diameter 45, 56mm Series Base Bracket
MAM-B070D	Tower Light Diameter 45, 56mm Series Base Bracket
MAM-B070R	Tower Light Diameter 45, 56mm Series Rotaet Base Bracket (180°)
MAM-B090B	Tower Light Diameter 86mm Series Base Bracket (Direct mounting)
MAM-B090C	Tower Light Diameter 86mm Series Base Bracket
MAM-I025	Ø20mm Plastic Pole Adaptor, Screw:M20X1.5P, Color: Ivory
MAM-DS24	Ø20mm Aluminum Pole Adaptor - - Die Casting
MAM-DS32	Ø20mm Aluminum pole mount base - Die Casting