

DESCRIPTION

MERCURY TO METAL CONTACTOR: The load terminals are isolated from each other by the glass in the hermetic seal. "The plunger assembly," which includes the ceramic insulator, the magnetic sleeve and related parts, floats on the mercury pool. When the coil is powered causing a magnetic field, the plunger assembly is pulled down into the mercury contact which is in turn displaced and moved up to make contact with the electrode, closing the circuit between the top and bottom load terminal which is connected to the stainless steel can.

TRAFFIC CONTROL (CONSTANT DUTY)

SP-1132- VOLTAGE- (A or D)

35 AMPS @ 600 VAC

SP-1130- VOLTAGE- (A or D)

60 AMPS @ 480 VAC

* A return spring replaces the buffer spring for this application

HOW TO ORDER

SPECIFY AS SHOWN BELOW

EXAMPLE #1

NUMBER OF POLES: 2, 3, 4 or Blank if single pole (4 pole on 35 & 60 AMP only)

CONTACTS: "NO" = Normally Open, "NC" = Normally Closed

COIL VOLTAGE: Followed by "A" for Alternating Current or "D" for Direct Current

OPTIONS

SEE NOTE #1

335NO-120ATHN-18

BRACKET, OTHER THEN STANDARD: "A, B, N, P or U" on 35 & 60-AMP units. (Blank if Standard bracket is used)
See Page 11 for Optional Terminations or Page 12 for Optional Mounting Plates

"H": Is for loads other then AC Resistive & Tungsten on Normally Open Units Only

"T": For Top Termination, "TS" For Top Screw Termination on 35-AMP Units. (Blank if Standard Termination).
See Pages 8 & 11

A.C. RESISTIVE LOAD RATING: (30, 35, 60, or 100-AMP).

We can cross-reference any competitors products. Over 125 years experience in the relay business.

NOTES: 1) Other designations are -1 thru -99. These are suffix numbers, and are reserved for units with dead special detail, construction and/or features. -11 MOV on coil (see page 29), -13 MOV & Metal Strap, -17 DIN Rail Mount, -20 DIN Rail & Metal Strap (see page 12), -18 Metal Strap (see page 7). (See example #2).

EXAMPLE #2

100NO-120AH-6A

The -6A stands for HIGH VOLTAGE contactor.

Used in ultraviolet curing ovens and other high voltage applications.

See page 9 for ratings.

30-AMP NORMALLY OPEN CONTACTORS

MDI



SINGLE POLE



**TWO POLE
STANDARD MOUNT**



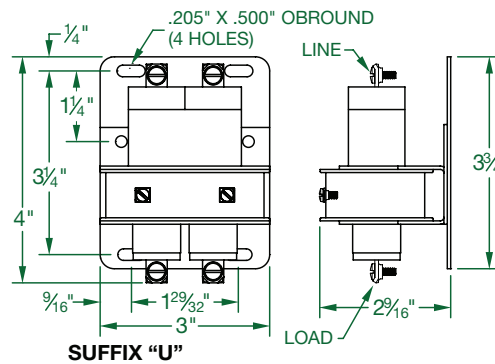
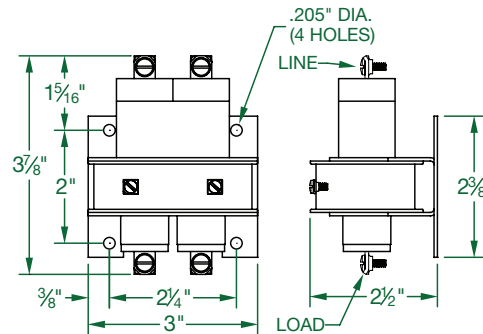
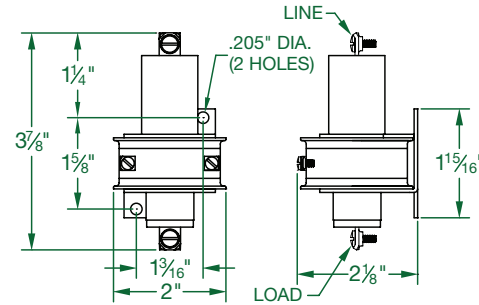
**TWO POLE
UNIVERSAL MOUNT**



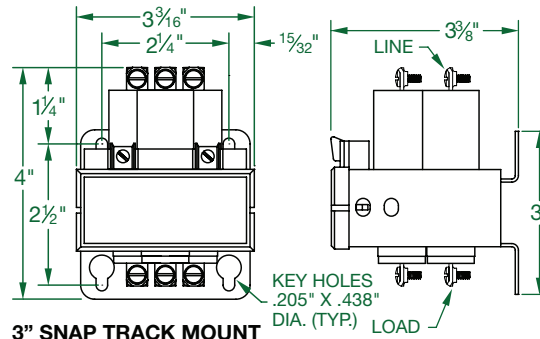
**THREE POLE
STANDARD MOUNT**



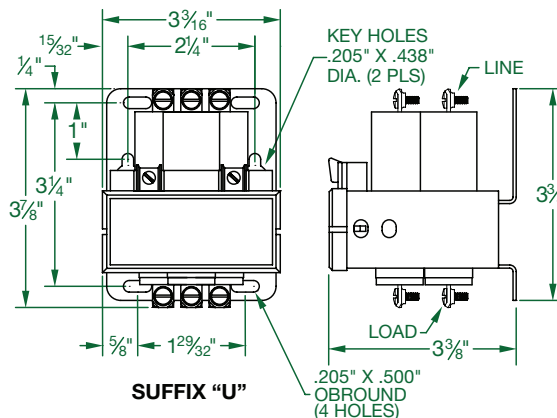
**THREE POLE
UNIVERSAL MOUNT**



SUFFIX "U"



3" SNAP TRACK MOUNT



SUFFIX "U"

GENERAL INFORMATION

The 30 Amp model is designed to save space and simplify mounting methods. The standard mounting bracket on the three pole model allows the unit to be mounted in standard 3" snap track channel. If you do not use snap track mounting, the standard three pole bracket has key hole slots for easy mounting in any panel arrangement. The universal three pole mounting bracket has various mounting holes and key hole slots to meet a variety of mounting centers.

The 30 Amp series is a more compact line with a well proven switch which is the heart of mercury relays. It is the same switch design that is in our 35 and 60 Amp encapsulated MDR's, which have withstood the test of time and millions of cycles in many different applications.

TYPICAL SPECIFICATIONS

- **ON NORMALLY OPEN UNITS:**
OPERATE TIME: 50 milliseconds
RELEASE TIME: 80 milliseconds
- **CONTACT RESISTANCE:**
30-AMP=.003 ohm*
- **DIELECTRIC WITHSTAND:**
2500 VAC RMS
- **LONGEVITY:**
MILLIONS OF CYCLES
- **TEMPERATURE RANGE:**
-35°C to 85°C
- **COIL TERMINALS:**
#6 BINDING HEAD SCREWS
- **LOAD TERMINALS:**
#8 BINDING HEAD SCREWS
- **UL LISTING:** FILE #E62767
- **C.S.A.:** FILE #LR41198
- **TO ORDER SEE PAGE 4**

*AFTER CYCLING UNDER LOAD.



FILE #E-62767



FILE #LR 41198



Made in the USA

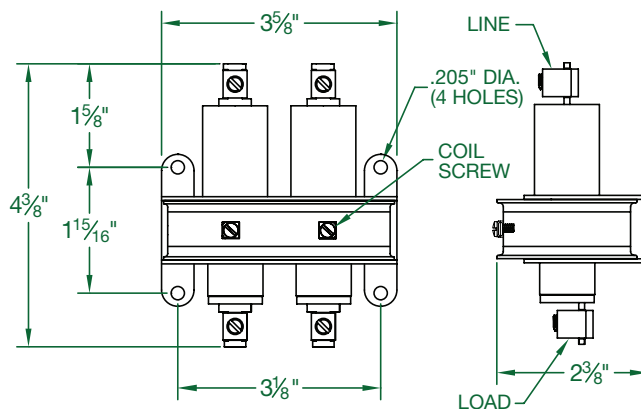
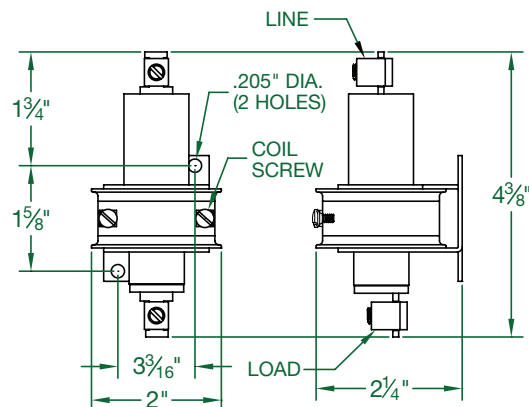
Catalog No.	Resistance	Current	V.A.	Watts
30NO-24D	180 Ω	133 mA	3.2	3.2
230NO-24D	131 Ω	188 mA	4.5	4.5
330NO-24D	73 Ω	329 mA	7.9	7.9
30NO-24A	28 Ω	316 mA	7.6	2.8
230NO-24A	12.5 Ω	610 mA	14.6	4.7
330NO-24A	7.6 Ω	815 mA	19.6	5.0
30NO-120A	725 Ω	65 mA	7.8	3.1
230NO-120A	317 Ω	118 mA	14.2	4.4
330NO-120A	210 Ω	163 mA	19.6	5.6
30NO-220A	3,150 Ω	27 mA	6.0	2.2
230NO-220A	1,300 Ω	56 mA	12.3	4.1
330NO-220A	728 Ω	86 mA	18.9	5.5



**SINGLE POLE
NORMALLY OPEN**



**TWO POLE
NORMALLY OPEN**



TYPICAL SPECIFICATIONS

Made in the USA

- **ON NORMALLY OPEN UNITS:**
 - OPERATE TIME: 50 milliseconds**
 - RELEASE TIME: 80 milliseconds**
- **CONTACT RESISTANCE:**
 - 35-AMP = .003 ohm***
 - 60-AMP = .002 ohm***
- **DIELECTRIC WITHSTAND:**
 - 2500 VAC RMS**
- **LONGEVITY:**
 - MILLIONS OF CYCLES**
- **TEMPERATURE RANGE:**
 - 35°C TO 85°C**
- **COIL TERMINALS:**
 - #6 BINDING HEAD SCREWS**
- **LOAD TERMINALS:**
 - PRESSURE CONNECTORS FOR**
 - A.W.G. #4-#14 ON 35-AMP AND**
 - A.W.G. #2-#8 ON 60-AMP UNITS**
- **UL LISTING:**
 - FILE #E62767 FOR L35 AND**
 - L60-AMP N.O. UNITS 1-2 POLES**
- **C.S.A.:**
 - FILE #LR41198 FOR L35 AND**
 - L60-AMP N.O. UNITS 1-2 POLES**



FILE #E-62767



FILE #LR 41198



COIL DATA L35 AND L60 SERIES.

Catalog No.		Resistance	Current	V.A.	Watts
L35NO-24D	L60NO-24D	188 Ω	135 mA	3.3	3.3
L235NO-24D	L260NO-24D	92 Ω	260 mA	6.2	6.2
L35NO-24A	L60NO-24A	28 Ω	325 mA	7.8	3.0
L235NO-24A	L260NO-24A	10.3 Ω	660 mA	15.8	4.5
L35NO-120A	L60NO-120A	725 Ω	75 mA	9.0	4.0
L235NO-120A	L260NO-120A	350 Ω	115 mA	13.8	4.6
L35NO-220A	L60NO-220A	3,150 Ω	27 mA	5.9	2.2
L235NO-220A	L260NO-220A	1,000 Ω	69 mA	15.2	4.8

* AFTER CYCLING UNDER LOAD

35/60-AMP NORMALLY OPEN CONTACTORS

MDI



SINGLE POLE—NORMALLY OPEN



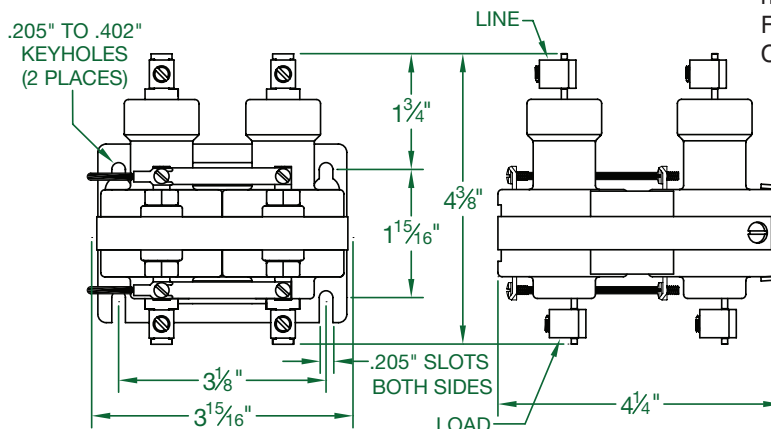
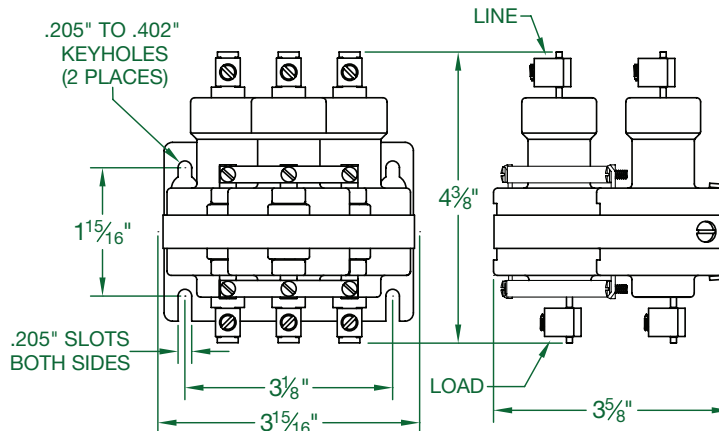
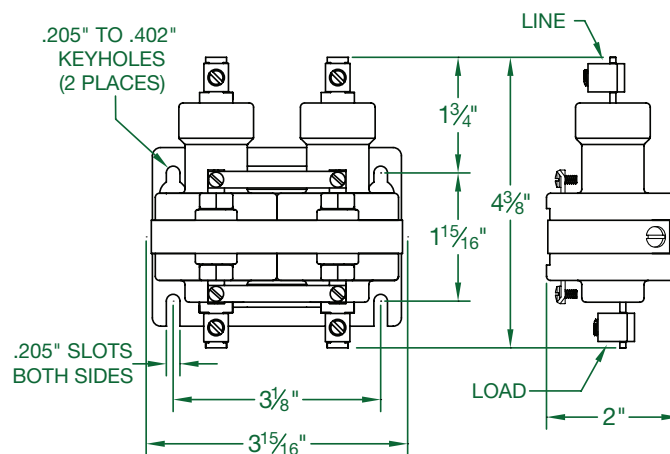
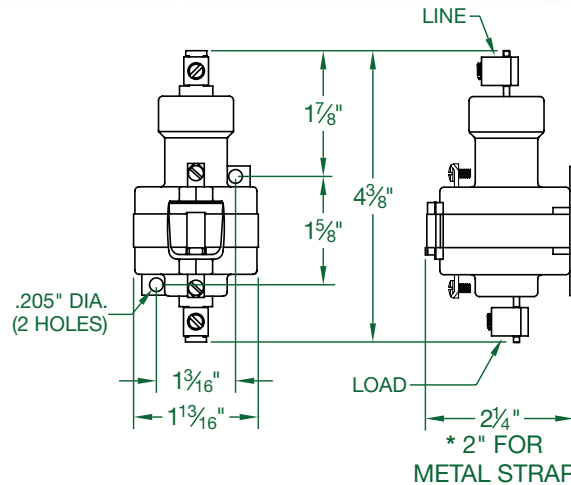
TWO POLE—NORMALLY OPEN



THREE POLE—NORMALLY OPEN



FOUR POLE—NORMALLY OPEN



TYPICAL SPECIFICATIONS

- NORMALLY OPEN UNITS:**
OPERATE TIME: 50 milliseconds
RELEASE TIME: 80 milliseconds
- NORMALLY CLOSED UNITS:**
OPERATE TIME: 30 milliseconds
RELEASE TIME: 35 milliseconds
- CONTACT RESISTANCE:**
35 AMP = .003 ohm*
60 AMP = .002 ohm*
- TEMPERATURE RANGE:**
-35°C to 85°C
- COIL TERMINALS:**
#6 WIRE BINDING SCREWS
- LOAD TERMINALS:**
PRESSURE CONNECTORS
4 TO 14 AWG ON 35 AMP
2 TO 8 AWG ON 60 AMP
- RATINGS:**
SEE PAGE 13 FOR COIL DATA
SEE PAGE 14 FOR RATINGS
- UL LISTING: FILE #E-62767 FOR
- C.S.A.: FILE # LR 41198 FOR
- TO ORDER SEE PAGE 4

* AFTER CYCLING UNDER LOAD

Made in the USA

TRAFFIC CONTROL (CONSTANT DUTY)

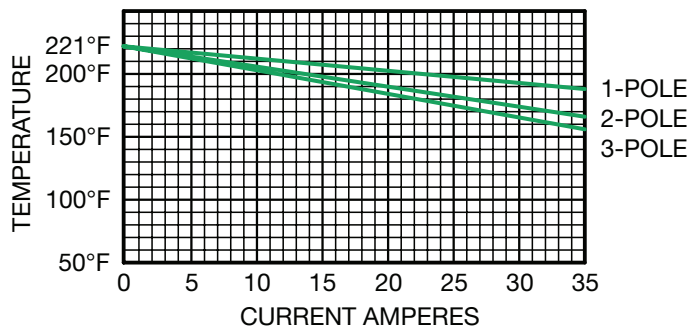
- SP-1132- VOLTAGE- (A or D)
35 AMPS @ 600 VAC
 - SP-1130- VOLTAGE- (A or D)
60 AMPS @ 480 VAC
- A return spring replaces the buffer spring for this application

HAZARDOUS LOCATIONS SUFFIX "X"

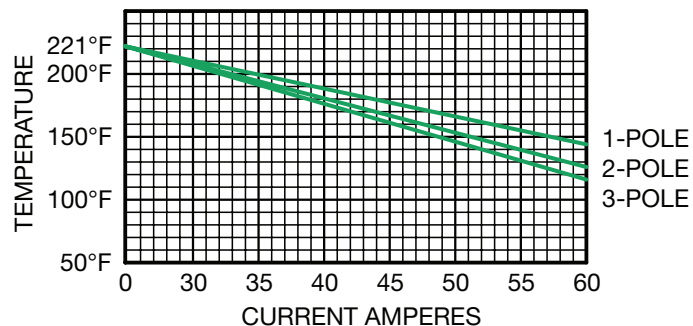
Available in 1, 2 & 3 Pole Units
Auxiliary devices for use in hazardous locations
For CLASS 1, GROUPS A, B, C, & D – Division 2 only.

DE-RATING CHARTS

35-AMP NORMALLY OPEN
LOAD DE-RATING DUE TO AMBIENT TEMPERATURE



60-AMP NORMALLY OPEN
LOAD DE-RATING DUE TO AMBIENT TEMPERATURE



35-AMP T-TOP CONTACTORS



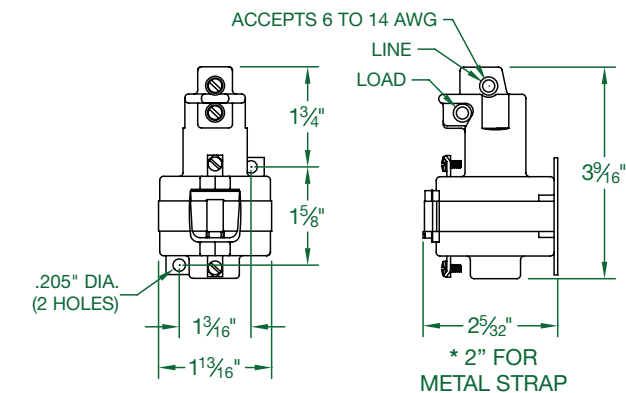
SINGLE POLE—NORMALLY OPEN



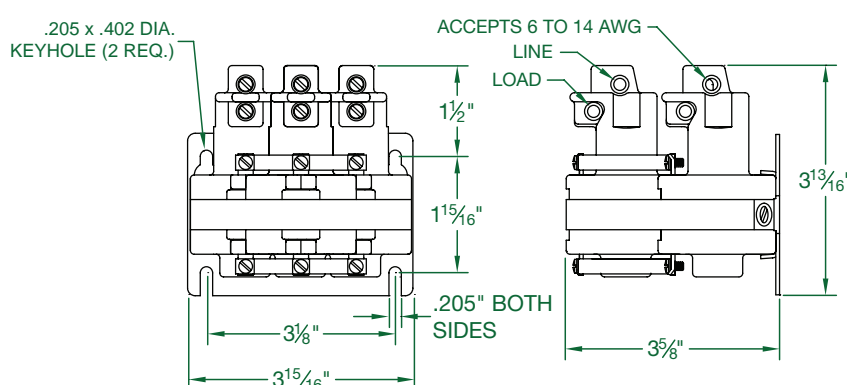
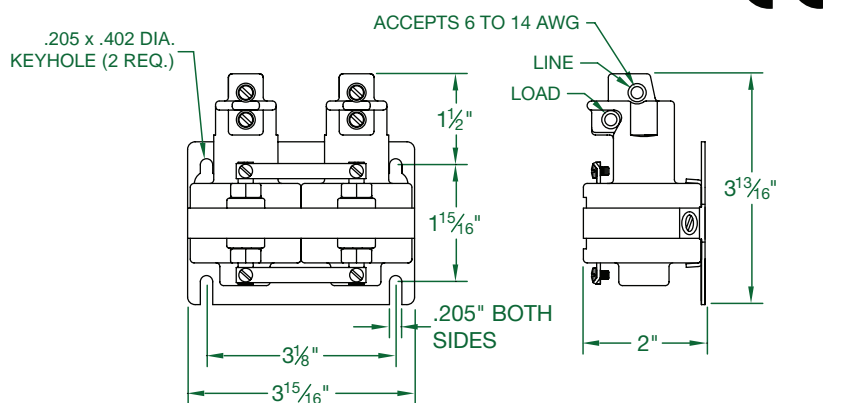
TWO POLE—NORMALLY OPEN



THREE POLE—NORMALLY OPEN



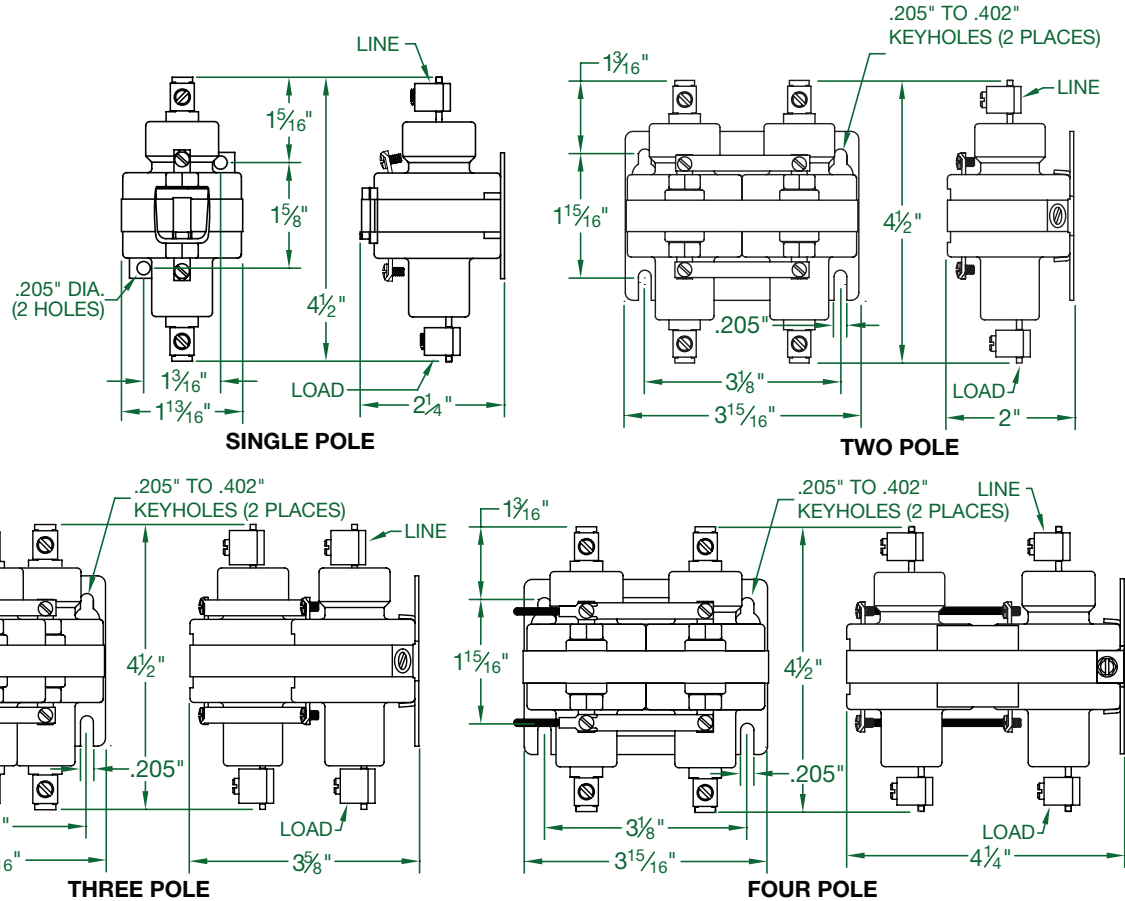
Made in the USA



35/60-AMP NORMALLY CLOSED CONTACTORS



SIMILAR CONSTRUCTION AS THE NORMALLY OPEN UNITS BUT WITH THE COIL POSITIONED CLOSER TO THE TOP OF THE CONTACTOR.



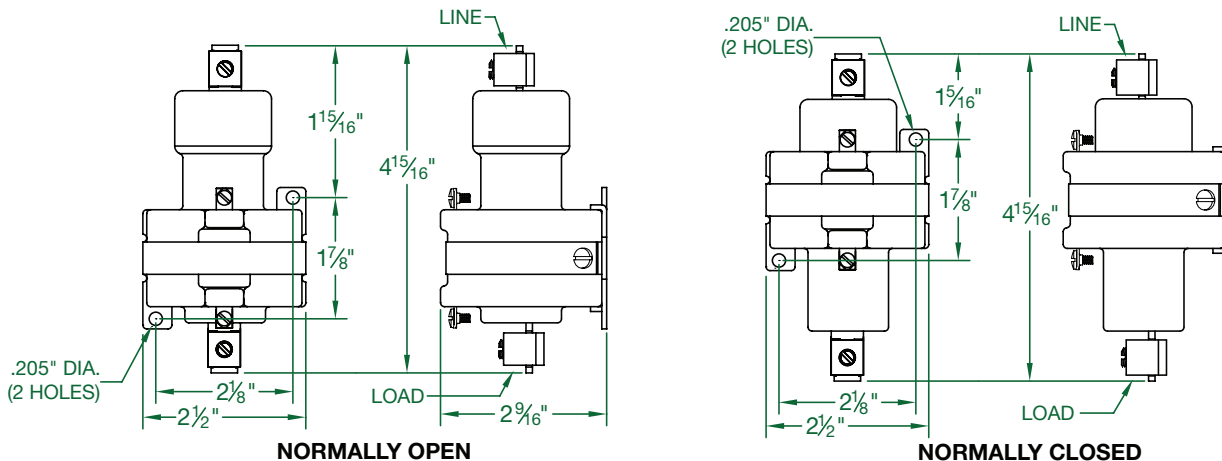
FILE #E-62767



FILE #LR 41198

Made in the USA

HIGH VOLTAGE CONTACTORS



COIL DATA

For UV Curing, and Various High Voltage applications. Available in Single Pole, Normally Open, and Normally Closed Units. The coils utilize 6-32 Wire Binding Screws, and the Contacts use Compression type terminals for #2 thru #8 AW wire.

• Also available in 2 & 3 pole

RATINGS: 10 AMPS @ 3500 VAC
15 AMPS @ 2500 VAC

AC INDUCTIVE Power Factor .7 or Greater.

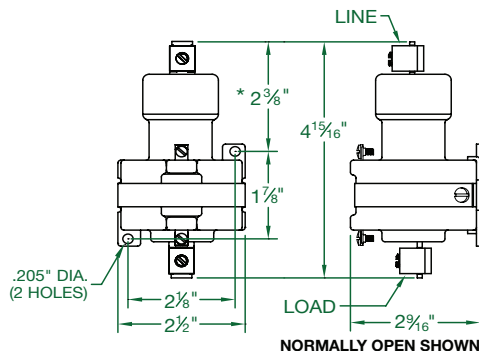
Catalog Number	Coil Voltage	Resistance	Current Draw	Wattage	V.A.
100NC-24D-6A	24 VDC	65 Ω	369 mA	8.9	8.9
100NC-120A-6A	120 VAC	380 Ω	125 mA	5.9	15.0
100NC-220A-6A	220 VAC	1,400 Ω	76 mA	8.1	16.7
100NO-12DH-6A	12 VDC	16 Ω	750 mA	9.0	9.0
100NO-24AH-6A	24 VAC	16 Ω	760 mA	9.2	18.2
100NO-24DH-6A	24 VDC	65 Ω	369 mA	8.9	8.9
100NO-120AH-6A	120 VAC	380 Ω	158 mA	9.5	19.0
100NO-220AH-6A	220 VAC	1,320 Ω	92 mA	11.2	20.2



NORMALLY OPEN UNIT



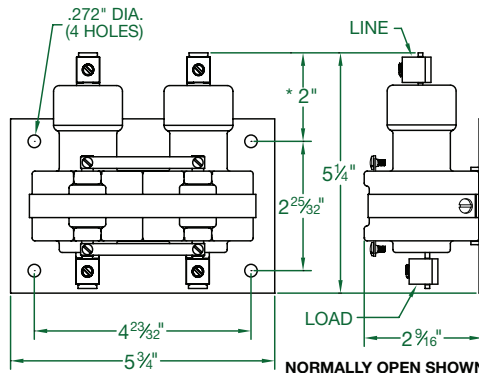
NORMALLY CLOSED UNIT



* THIS DIMENSION IS $1\frac{3}{8}$ " FOR NORMALLY CLOSED SINGLE POLE UNITS



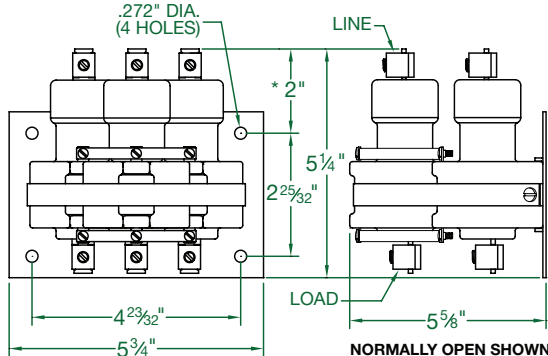
TWO POLE—NORMALLY OPEN



* THIS DIMENSION IS $1\frac{5}{8}$ " FOR NORMALLY CLOSED TWO POLE UNITS



THREE POLE—NORMALLY OPEN



* THIS DIMENSION IS $1\frac{5}{8}$ " FOR NORMALLY CLOSED TWO POLE UNITS

TYPICAL SPECIFICATIONS

- ON NORMALLY OPEN UNITS:
OPERATE TIME: 50 milliseconds
RELEASE TIME: 80 milliseconds
- ON NORMALLY CLOSED UNITS:
OPERATE TIME: 45 milliseconds
RELEASE TIME: 60 milliseconds
- CONTACT RESISTANCE:
.001 ohm*
- DIELECTRIC WITHSTAND:
2500VAC RMS
- LONGEVITY:
MILLIONS OF CYCLES
- TEMPERATURE RANGE:
-35°C TO 85°C
- COIL TERMINALS:
#6 BINDING HEAD SCREWS
- LOAD TERMINALS:
PRESSURE CONNECTORS.
STANDARD ACCEPTS A.W.G.
#2 to #8.
FOR A.W.G. #1 to #8,
ADD SUFFIX -5 to CATALOG
NUMBER (i.e. 100NO-120A-5)
- RATINGS:
Derate over 240VAC Res.
See Page 13 for Coil Data.
See Page 14 for Ratings.
- TO ORDER SEE PAGE 4.

S100NO - SERIES

AVAILABLE IN 1, 2 & 3 POLES
RATINGS: 100 AMPS @ 480 VAC
SEE PAGE 14 FOR RATINGS

Made in the USA

