

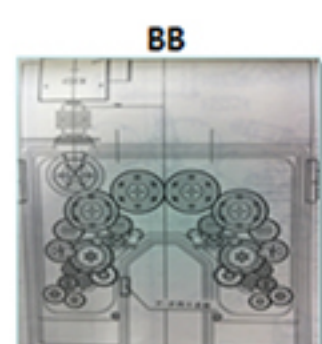
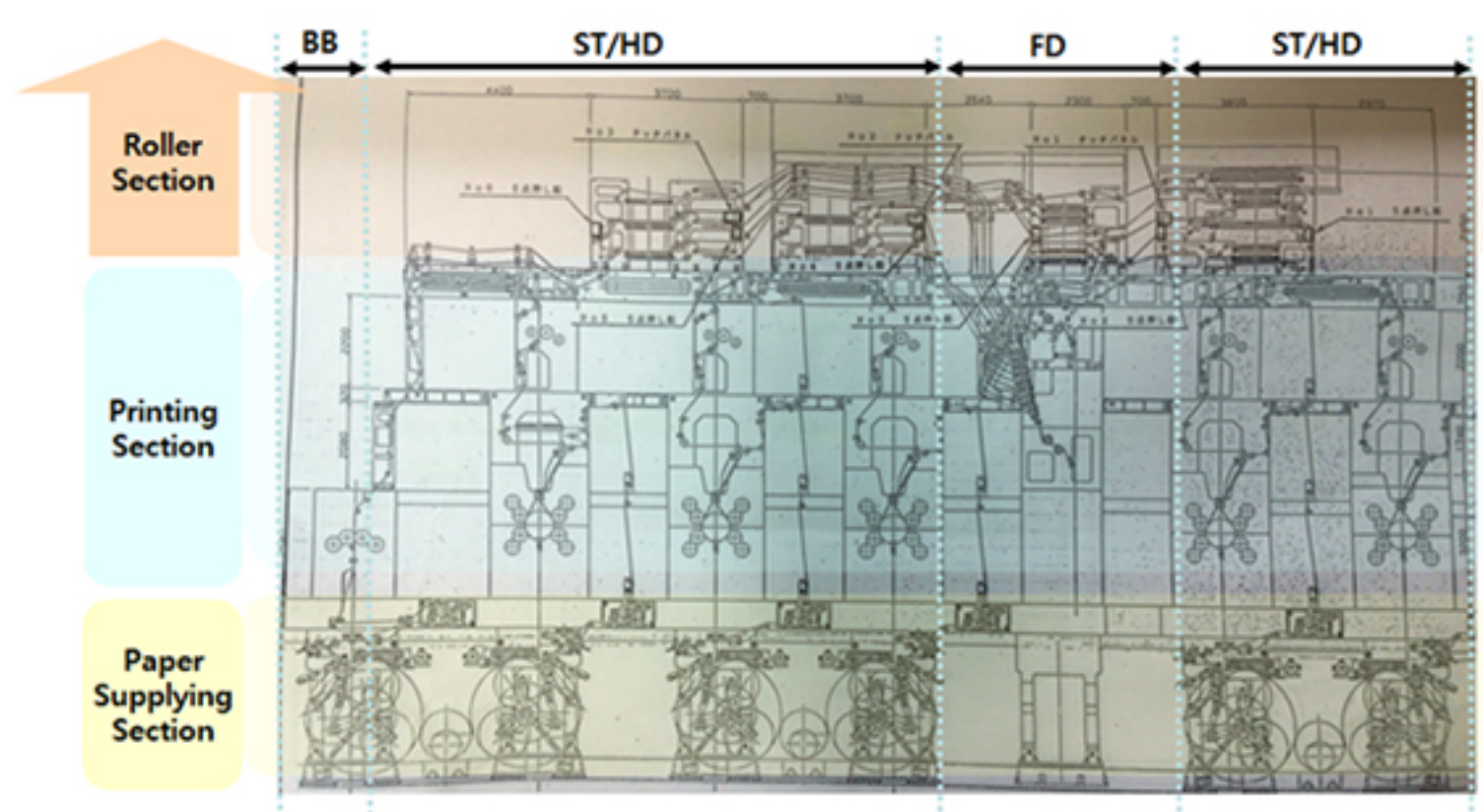
Application

ROTARY PRESS MACHINE

1. Rotary Press Outline

- Machine which is printing on the papers among the fast turning cylinders. Its printing plates are installed in shape of cylinders and these cylinders turns so fast that can print.
- Rotary Press Machine can be classified into two categories. They are the shaft system machine whose shaft is connected to a long shaft and shaftless system machine which is needed high resolution pulse's Input/Output and specific synchronized speed control (Vector Control) without shaft.

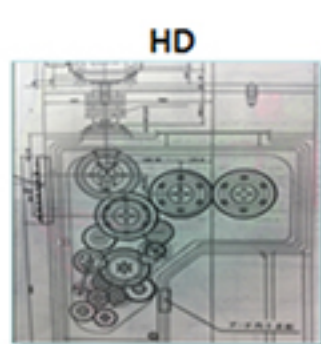
2. Rotary Press Composition



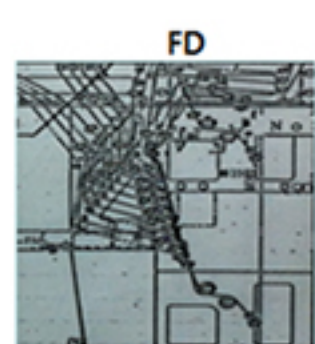
BB
Printing in black and white color on four sides of papers



ST
Color Printing by using mix colors of Red, Blue, Yellow, Black



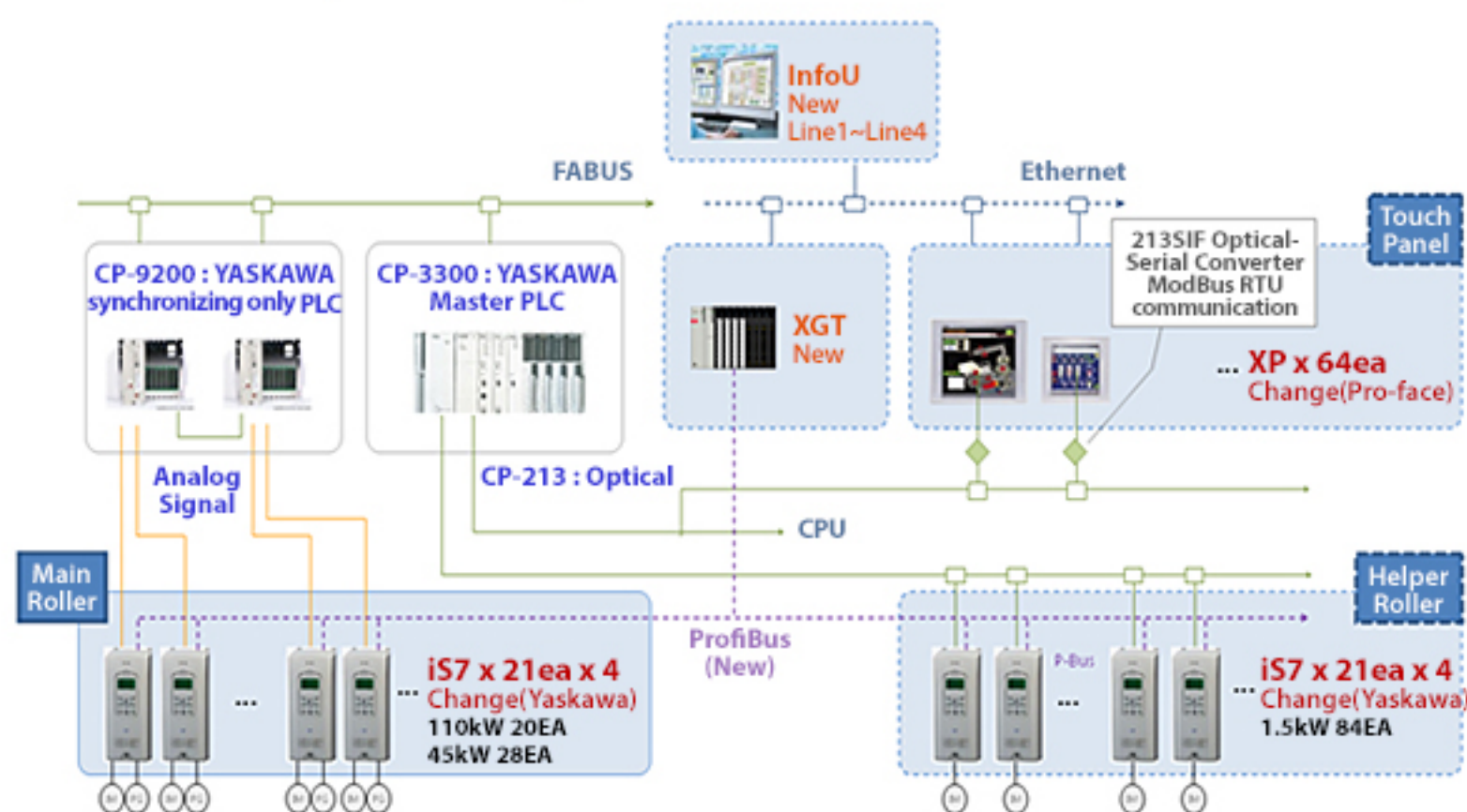
HD
Print only in black and white, and two sided printing



FD
Maintain tension on printed papers with Rollers and collect, cut, fold and discharge

- Feeding paper on the first time, along to the moving path, System is composed of Paper supplying, Printing, Roller sections.
- Make a Master of the FD, BB, ST and HD are operated in synchronized speed.
- Motor which is in the Roller part can be controlled by FieldBus communication.

3. Control System Composition



- iS7(High pulse Line Drive Input/Output type vector control): Precise synchronized speed control
- (110kWx5ea, 45kWx7ea, 1.5kWx21ea)x 4 sets
- InfoU-XGT-XP Panel : Ethernet communication

4. Inverter's Main Function

- Sensored Vector Control
 - High responsive, precise speed control is possible with Encoder(PG)-attached motor
 - Sensored vector mode's control features are way better than those of V/F control or the others and control features of servo machine can be realized.
- ASR Gain Control Function
 - By adjusting P-Gain and I-Gain of ASR, Synchronize response speed among each controller.
- Run Enable Function
 - If order is entered, inverter output is blocked, motor Free-runs and if order is cleared, it restart.
- ZSD(Zero Speed Detection) Function
 - This is a function that hold the motor stopped at any place