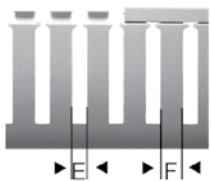




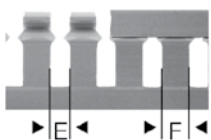
## T1 DUCT SERIES

# LARGEST INVENTORY OF WIRE DUCT AND COMPONENTS IN NORTH AMERICA

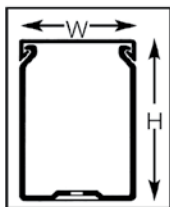
NOMINAL 1 1/2"-2 1/4"-3"-4"



NOMINAL 5/8"-1"



All wiring ducts come complete with cover. Wiring duct covers can be sold separately: IBOCO Corp. Price List.



Non-slip cover design of minimum encumbrance and maximum grip.

| CATALOG NUMBER | Nominal Size (WxH) | Dim. in inches (Actual) |      |     |     | Dim. WxH in mm | Std. Ctn. Lengths (1) | (Qty) Feet |
|----------------|--------------------|-------------------------|------|-----|-----|----------------|-----------------------|------------|
|                |                    | W                       | H    | E   | F   |                |                       |            |
| T1-0506G       | 1/2 x 5/8          | .60                     | .71  | .20 | .30 | 15 x 18        | 20                    | 120        |
| T1-0510G       | 1/2 x 1            | .60                     | 1.18 | .20 | .30 | 15 x 30        | 20                    | 120        |
| T1-0522G       | 1/2 x 2-1/4        | .60                     | 2.36 | .20 | .30 | 15 x 60        | 16                    | 96         |
| T1-1010*       | 1 x 1              | 1.00                    | 1.18 | .20 | .30 | 25 x 30        | 18                    | 108        |
| T1-1015*       | 1 x 1-1/2          | 1.00                    | 1.57 | .31 | .47 | 25 x 40        | 18                    | 108        |
| T1-1022*       | 1 x 2-1/4          | 1.00                    | 2.36 | .31 | .47 | 25 x 60        | 24                    | 144        |
| T1-1030*       | 1 x 3              | 1.00                    | 3.15 | .31 | .47 | 25 x 80        | 24                    | 144        |
| T1-1040*       | 1 x 4              | 1.00                    | 3.94 | .31 | .47 | 25 x 100       | 8                     | 48         |
| T1-1515*       | 1-1/2 x 1-1/2      | 1.57                    | 1.57 | .31 | .47 | 40 x 40        | 20                    | 120        |
| T1-1522*       | 1-1/2 x 2-1/4      | 1.57                    | 2.36 | .31 | .47 | 40 x 60        | 18                    | 108        |
| T1-1530*       | 1-1/2 x 3          | 1.57                    | 3.15 | .31 | .47 | 40 x 80        | 16                    | 96         |
| T1-1540*       | 1-1/2 x 4          | 1.57                    | 3.94 | .31 | .47 | 40 x 100       | 8                     | 48         |
| T1-2215G       | 2-1/4 x 1-1/2      | 2.36                    | 1.57 | .31 | .47 | 60 x 40        | 12                    | 72         |
| T1-2222*       | 2-1/4 x 2-1/4      | 2.36                    | 2.36 | .31 | .47 | 60 x 60        | 12                    | 72         |
| T1-2230*       | 2-1/4 x 3          | 2.36                    | 3.15 | .31 | .47 | 60 x 80        | 12                    | 72         |
| T1-2240*       | 2-1/4 x 4          | 2.36                    | 3.94 | .31 | .47 | 60 x 100       | 4                     | 24         |
| T1-3015G       | 3 x 1-1/2          | 3.15                    | 1.57 | .31 | .47 | 80 x 40        | 12                    | 72         |
| T1-3022*       | 3 x 2-1/4          | 3.15                    | 2.36 | .31 | .47 | 80 x 60        | 12                    | 72         |
| T1-3030*       | 3 x 3              | 3.15                    | 3.15 | .31 | .47 | 80 x 80        | 12                    | 72         |
| T1-3040*       | 3 x 4              | 3.15                    | 3.94 | .31 | .47 | 80 x 100       | 4                     | 24         |
| T1-3050*       | 3 x 5              | 2.95                    | 4.92 | .31 | .47 | 75 x 125       | 6                     | 36         |
| T1-4015G       | 4 x 1-1/2          | 3.94                    | 1.57 | .31 | .47 | 100 x 40       | 8                     | 48         |
| T1-4022G       | 4 x 2-1/4          | 3.94                    | 2.36 | .31 | .47 | 100 x 60       | 8                     | 48         |
| T1-4030*       | 4 x 3              | 3.94                    | 3.15 | .31 | .47 | 100 x 80       | 8                     | 48         |
| T1-4040*       | 4 x 4              | 3.94                    | 3.94 | .31 | .47 | 100 x 100      | 4                     | 24         |
| T1-4050*       | 4 x 5              | 3.94                    | 4.92 | .31 | .47 | 100 x 125      | 4                     | 24         |
| T1-6040*       | 6 x 4              | 5.91                    | 3.94 | .31 | .47 | 150 x 100      | 4                     | 24         |

Example: T1-0510 G = 1/2"x 1"light GREY duct with cover (1) Each standard length is actually 6'6 3/4" but is counted as 6 feet for packaging and pricing

\*Color - add suffix "G" for light GREY "W" for WHITE ADHESIVE BACKING - add suffix "A" to catalog number - contact sales office for pricing. Available in 1 meter length contact sales office

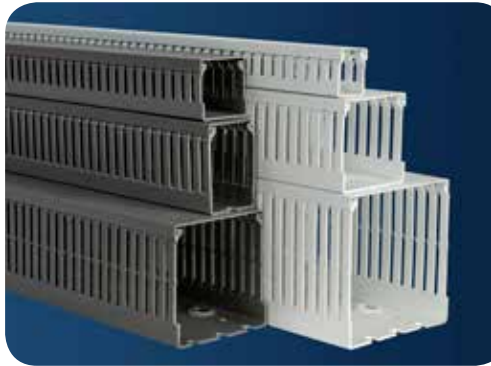


Restricted slot opening for wire retaining.

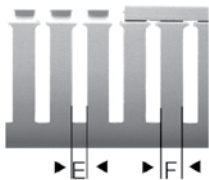
Two predetermined breaklines:  
- for breaking off and removal of sidewall finger segments only.  
- for removal of sidewall finger and base segments.

Burr-free edges.

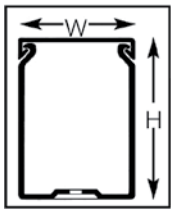
Recess boss for rapid mounting of components.



**DUCT SERIES T1-E**



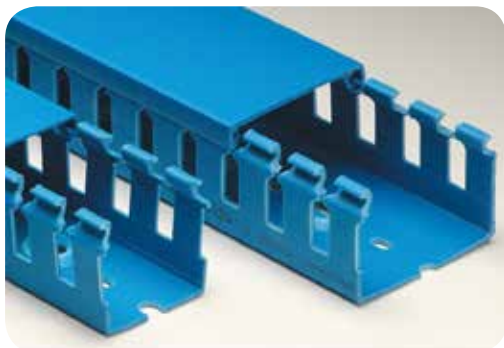
All wiring ducts come complete with cover. Wiring duct covers can be sold separately: see page 8 and IBOCO Corp. Price List.



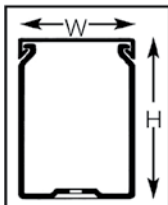
Non-slip cover design of minimum encumbrance and maximum grip.

| CATALOG NUMBER | Nominal Size (WxH) | Dim. in inches (Actual) |      |     |     | Dim. WxH in mm | Std. Ctn. Lengths (1) | (Qty) Feet |
|----------------|--------------------|-------------------------|------|-----|-----|----------------|-----------------------|------------|
|                |                    | W                       | H    | E   | F   |                |                       |            |
| T1E-1015*      | 1 x 1-1/2          | 1.00                    | 1.57 | .16 | .24 | 25 x 40        | 18                    | 108        |
| T1E-1022*      | 1 x 2-1/4          | 1.00                    | 2.36 | .16 | .24 | 25 x 60        | 24                    | 144        |
| T1E-1030*      | 1 x 3              | 1.00                    | 3.15 | .16 | .24 | 25 x 80        | 24                    | 144        |
| T1E-1040*      | 1 x 4              | 1.00                    | 3.94 | .16 | .24 | 25 x 100       | 8                     | 48         |
| T1E-1515*      | 1-1/2 x 1-1/2      | 1.57                    | 1.57 | .16 | .24 | 40 x 40        | 20                    | 120        |
| T1E-1522*      | 1-1/2 x 2-1/4      | 1.57                    | 2.36 | .16 | .24 | 40 x 60        | 18                    | 108        |
| T1E-1530*      | 1-1/2 x 3          | 1.57                    | 3.15 | .16 | .24 | 40 x 80        | 16                    | 96         |
| T1E-1540*      | 1-1/2 x 4          | 1.57                    | 3.94 | .16 | .24 | 40 x 100       | 8                     | 48         |
| T1E-2215G      | 2-1/4 x 1-1/2      | 2.36                    | 1.57 | .16 | .24 | 60 x 40        | 12                    | 72         |
| T1E-2222*      | 2-1/4 x 2-1/4      | 2.36                    | 2.36 | .16 | .24 | 60 x 60        | 12                    | 72         |
| T1E-2230*      | 2-1/4 x 3          | 2.36                    | 3.15 | .16 | .24 | 60 x 80        | 12                    | 72         |
| T1E-2240*      | 2-1/4 x 4          | 2.36                    | 3.94 | .16 | .24 | 60 x 100       | 4                     | 24         |
| T1E-3015G      | 3 x 1-1/2          | 3.15                    | 1.57 | .16 | .24 | 80 x 40        | 12                    | 72         |
| T1E-3022*      | 3 x 2-1/4          | 3.15                    | 2.36 | .16 | .24 | 80 x 60        | 12                    | 72         |
| T1E-3030*      | 3 x 3              | 3.15                    | 3.15 | .16 | .24 | 80 x 80        | 12                    | 72         |
| T1E-3040*      | 3 x 4              | 3.15                    | 3.94 | .16 | .24 | 80 x 100       | 4                     | 24         |
| T1E-4015G      | 4 x 1-1/2          | 3.94                    | 1.57 | .16 | .24 | 100 x 40       | 8                     | 48         |
| T1E-4022G      | 4 x 2-1/4          | 3.94                    | 2.36 | .16 | .24 | 100 x 60       | 8                     | 48         |
| T1E-4030*      | 4 x 3              | 3.94                    | 3.15 | .16 | .24 | 100 x 80       | 8                     | 48         |
| T1E-4040*      | 4 x 4              | 3.94                    | 3.94 | .16 | .24 | 100 x 100      | 4                     | 24         |

\*Color - add suffix "G" for light GREY "W" for WHITE ADHESIVE BACKING - add suffix "A" to catalog number - contact sales office for pricing. Available in 1 meter length contact sales office



**DUCT SERIES T1-B**



Blue color duct recognized for intrinsic safe circuits. ADHESIVE BACKING - add suffix "A" to catalog number - contact sales office for pricing. Available in 1 meter length contact sales office

| CATALOG NUMBER | Nominal Size (WxH) | Dim. in inches (Actual) |      |     |     | Dim. WxH in mm | Std. Ctn. Lengths (1) | (Qty) Feet |
|----------------|--------------------|-------------------------|------|-----|-----|----------------|-----------------------|------------|
|                |                    | W                       | H    | E   | F   |                |                       |            |
| T1-1010B       | 1 x 1              | 1.00                    | 1.18 | .20 | .30 | 25 x 30        | 18                    | 108        |
| T1-1022B       | 1 x 2-1/4          | 1.00                    | 2.36 | .31 | .47 | 25 x 60        | 24                    | 144        |
| T1-1030B       | 1 x 3              | 1.00                    | 3.15 | .31 | .47 | 25 x 80        | 24                    | 144        |
| T1-1515B       | 1-1/2 x 1-1/2      | 1.57                    | 1.57 | .31 | .47 | 40 x 40        | 20                    | 120        |
| T1-1522B       | 1-1/2 x 2-1/4      | 1.57                    | 2.36 | .31 | .47 | 40 x 60        | 18                    | 108        |
| T1-1530B       | 1-1/2 x 3          | 1.57                    | 3.15 | .31 | .47 | 40 x 80        | 16                    | 96         |
| T1-2215B       | 2-1/4 x 1-1/2      | 2.36                    | 1.57 | .31 | .47 | 60 x 40        | 12                    | 72         |
| T1-2222B       | 2-1/4 x 2-1/4      | 2.36                    | 2.36 | .31 | .47 | 60 x 60        | 12                    | 72         |
| T1-2230B       | 2-1/4 x 3          | 2.36                    | 3.15 | .31 | .47 | 60 x 80        | 12                    | 72         |
| T1-3030B       | 3 x 3              | 3.15                    | 3.15 | .31 | .47 | 80 x 80        | 12                    | 72         |
| T1-3040B       | 3 x 4              | 3.15                    | 3.94 | .31 | .47 | 80 x 100       | 4                     | 24         |
| T1-3050B       | 3 x 5              | 2.95                    | 4.92 | .31 | .47 | 75 x 125       | 6                     | 36         |
| T1-4030B       | 4 x 3              | 3.94                    | 3.15 | .31 | .47 | 100 x 80       | 8                     | 48         |
| T1-4040B       | 4 x 4              | 3.94                    | 3.94 | .31 | .47 | 100 x 100      | 4                     | 24         |

NOTE: Each standard length is 6' 6-3/4" but is considered as 6 feet for the purpose of pricing and packaging.



## T1-K

### DUCT SERIES



| CATALOG NUMBER | Nominal Size (WxH) | Dim. in inches (Actual) |      |     |     | Dim. WxH in mm | Std. Ctn. Lengths (1) | (Qty) Feet |
|----------------|--------------------|-------------------------|------|-----|-----|----------------|-----------------------|------------|
|                |                    | W                       | H    | E   | F   |                |                       |            |
| T1-1040K       | 1 x 4              | 1.00                    | 3.94 | .31 | .47 | 25 x 100       | 8                     | 48         |
| T1-1530K       | 1-1/2 x 3          | 1.57                    | 3.15 | .31 | .47 | 40 x 80        | 16                    | 96         |
| T1-2222K       | 2-1/4 x 2-1/4      | 2.36                    | 2.36 | .31 | .47 | 60 x 60        | 12                    | 72         |
| T1-2240K       | 2-1/4 x 4          | 2.36                    | 3.94 | .31 | .47 | 60 x 100       | 4                     | 24         |
| T1-3030K       | 3 x 3              | 3.15                    | 3.15 | .31 | .47 | 80 x 80        | 12                    | 72         |
| T1-3040K       | 3 x 4              | 3.15                    | 3.94 | .31 | .47 | 80 x 100       | 4                     | 24         |
| T1-3050K       | 3 x 5              | 2.95                    | 4.92 | .31 | .47 | 75 x 125       | 6                     | 36         |
| T1-4040K       | 4 x 4              | 3.94                    | 3.94 | .31 | .47 | 100 x 100      | 4                     | 24         |
| T1-4050K       | 4 x 5              | 3.94                    | 4.92 | .31 | .47 | 100 x 125      | 4                     | 24         |

For special sizes contact sales office

ADHESIVE BACKING - add suffix "A" to catalog number - contact sales office for pricing.

Available in 1 meter length contact sales office

## TS/TSH

### DUCT SERIES



| CATALOG NUMBER | Nominal Size (WxH) | Dim. in inches (Actual) |      | Dim. WxH in mm | Std. Ctn. Lengths (1) | (Qty) Feet |
|----------------|--------------------|-------------------------|------|----------------|-----------------------|------------|
|                |                    | W                       | H    |                |                       |            |
| TS/TSH-0506G   | 1/2 x 5/8          | .60                     | .71  | 15 x 18        | 20                    | 120        |
| TS/TSH-0510G   | 1/2 x 1            | .60                     | 1.18 | 15 x 30        | 20                    | 120        |
| TS/TSH-1010G   | 1 x 1              | 1.00                    | 1.18 | 25 x 30        | 18                    | 108        |
| TS/TSH-1015G   | 1 x 1-1/2          | 1.00                    | 1.57 | 25 x 40        | 18                    | 108        |
| TS/TSH-1030G   | 1 x 3              | 1.00                    | 3.15 | 25 x 80        | 24                    | 144        |
| TS/TSH-1515G   | 1-1/2 x 1-1/2      | 1.57                    | 1.57 | 40 x 40        | 20                    | 120        |
| TS/TSH-1522G   | 1-1/2 x 2-1/4      | 1.57                    | 2.36 | 40 x 60        | 18                    | 108        |
| TS/TSH-1530G   | 1-1/2 x 3          | 1.57                    | 3.15 | 40 x 80        | 16                    | 96         |
| TS/TSH-2222G   | 2-1/4 x 2-1/4      | 2.36                    | 2.36 | 60 x 60        | 12                    | 72         |
| TS/TSH-2230G   | 2-1/4 x 3          | 2.36                    | 3.15 | 60 x 80        | 12                    | 72         |
| TS/TSH-3022G   | 3 x 2-1/4          | 3.15                    | 2.36 | 80 x 60        | 12                    | 72         |
| TS/TSH-3030G   | 3 x 3              | 3.15                    | 3.15 | 80 x 80        | 12                    | 72         |
| TS/TSH-3040G   | 3 x 4              | 3.15                    | 3.94 | 80 x 100       | 4                     | 24         |
| TS/TSH-4030G   | 4 x 3              | 3.94                    | 3.15 | 100 x 80       | 8                     | 48         |
| TS/TSH-4040G   | 4 x 4              | 3.94                    | 3.94 | 100 x 100      | 4                     | 24         |

TS - Solid duct less mtg. holes

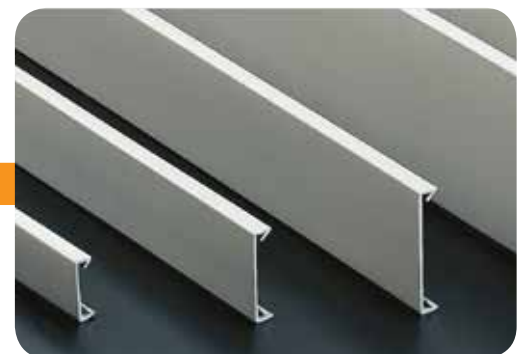
TSH - Solid duct with mtg. holes

Optional adhesive backing available: add suffix "A" to catalog number.

Contact the IBOCO sales office for pricing.

## COV

### COV COVER FOR T1/T1-E/TS/TSH



| CATALOG NUMBER | Std. Ctn. Lengths (1) | (Qty) Feet |
|----------------|-----------------------|------------|
| COV-05*        | 25                    | 150        |
| COV-10*        | 25                    | 150        |
| COV-15*        | 25                    | 150        |
| COV-22*        | 25                    | 150        |
| COV-30*        | 25                    | 150        |
| COV-40*        | 20                    | 120        |
| COV-60*        | 20                    | 120        |

\* Color - add suffix "G" for light GREY RAL 7030  
"W" for WHITE

(1) Each standard length is actually 6' 6-3/4" but is counted as 6 feet for packaging and pricing