

# Technical Data

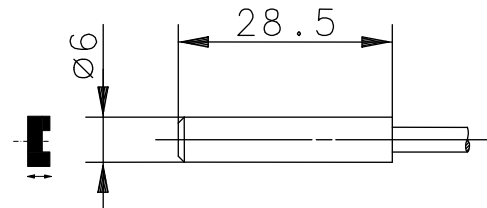
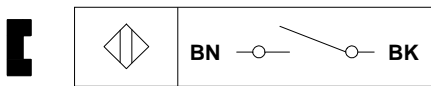
## Magnetic switch

### Series MA-30

Type designation **MAK-3012-F-1**

Item number **6311230704**

Wiring diagram



### Identifying characteristics in accordance with EN 60947-5-1 and EN 62246-1

#### Electrical data

Assured operating distance	S <sub>a</sub>	20 mm
Switching element function		N.O.
Reed contact:		
max. switching voltage		1000 V AC / 1000 V DC
max. switching current		1 A
max. switching capacity		100 VA
mechanical lifetime		3x10 <sup>8</sup> switchings, however, according to load resetability
Repeat accuracy	R	± 0,1 mm
Max. Release point		under same geometrical conditions at the same temperature
Shock		40 mm
Vibration		50 g (11 ms, ½ Sinus wave)
Corresponding magnet		20 g (10 – 2000 Hz)
		T-62 N/S

#### Mechanical data

Enclosure	PA 6.6, black; encapsulated reed contact
Ambient air temperature	-5 °C ... +70 °C
Type of protection	IP67 (NEMA 4) according to IEC 529, EN 60529
Termination type	cable 2 x AWG 26 x 1 m ± 5 %; PVC -outer jacket black;
Assembly position	optional (assembly on iron means reduction of switch distance)

#### EU Conformity

acc. to directive 2004 / 108 / EC

#### Approvals



UL Listed, Ind. Cont. Eq. / Class 2 Power source

#### Note limited electrical data:

max. switching voltage 30 V AC / 60 V DC

max. switching current 1 A

max. switching capacity 60 VA

This document will not become the contractual basis; the details included herein do not constitute any descriptions of expected conditions, so that warranties/claims for defects on account of possible variations of the actual from the here described condition are excluded. Subject to modifications and amendments.

Date of issue: 24.06.2013 / Page 1 of 1  
Document: 6311230704\_en / Last update: 1 / 0022-13