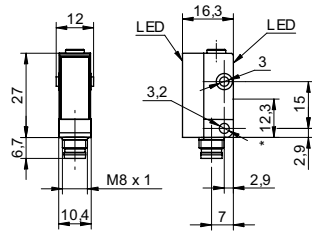


Retro-reflective sensors

FDPK 10

sample drawing



* emitter axis

general data

type	retro-reflective sensor
light source	pulsed red LED
actual range S_b	3,5 m
nominal range S_n	4 m
polarization filter	yes
alignment / soiled lens indicator	flashing light indicator
light indicator	LED yellow
wave length	660 nm
suppression of reciprocal influence	yes

electrical data

response time / release time	< 0,5 ms
voltage supply range +Vs	10 ... 30 VDC
current consumption max. (no load)	25 mA
current consumption typ.	20 mA
voltage drop V_d	< 1,8 VDC
output function	light / dark operate
output current	< 100 mA
short circuit protection	yes
reverse polarity protection	yes

mechanical data

width / diameter	10,4 mm
height / length	27 mm
depth	16,3 mm
type	rectangular
housing material	plastic (ASA)
front (optics)	PMMA

ambient conditions

operating temperature	-25 ... +65 °C
-----------------------	----------------

sample picture



Retro-reflective sensors
FPDK 10

order reference	connection types	output circuit	sensitivity adjustment	protection class
FPDK 10N5130	cable 4 pin, 2 m	NPN	no	IP 65
FPDK 10N5130/S35A	connector M8 4 pin	NPN	no	IP 67
FPDK 10N5135	cable 4 pin, 2 m	NPN	potentiometer, 240°	IP 65
FPDK 10N5135/S35A	connector M8 4 pin	NPN	potentiometer, 240°	IP 67
FPDK 10P5130	cable 4 pin, 2 m	PNP	no	IP 65
FPDK 10P5130/S35A	connector M8 4 pin	PNP	no	IP 67
FPDK 10P5135	cable 4 pin, 2 m	PNP	potentiometer, 240°	IP 65
FPDK 10P5135/S35A	connector M8 4 pin	PNP	potentiometer, 240°	IP 67