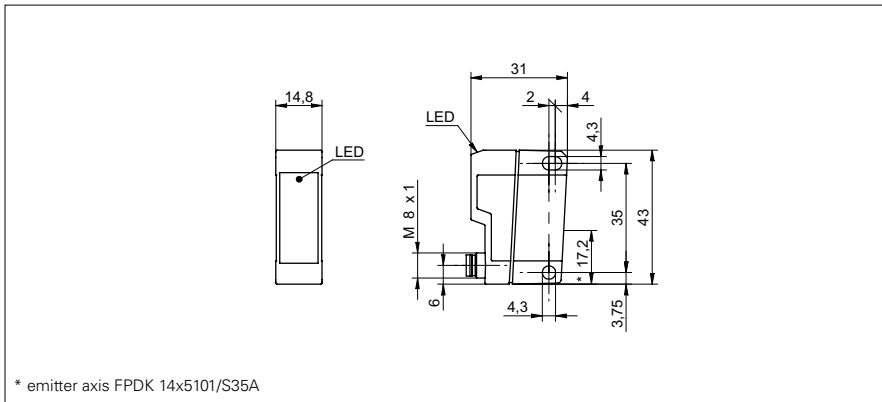


Retro-reflective sensors

FDPK 14

sample drawing



* emitter axis FDPK 14x5101/S35A

general data

type	retro-reflective sensor
light source	pulsed red LED
polarization filter	yes
alignment / soiled lens indicator	flashing light indicator
light indicator	LED yellow
sensitivity adjustment	no
wave length	660 nm
suppression of reciprocal influence	yes
actual range Sb = 3,2 m	
version	single lens optics
nominal range Sn	3,8 m
actual range Sb = 7 m	
nominal range Sn	7,2 m

sample picture



electrical data

response time / release time	< 1 ms
voltage supply range +Vs	10 ... 30 VDC
current consumption max. (no load)	25 mA
current consumption typ.	20 mA
voltage drop Vd	< 1,8 VDC
output function	light / dark operate
output current	< 100 mA
short circuit protection	yes
reverse polarity protection	yes

mechanical data

width / diameter	14,8 mm
height / length	43 mm
depth	31 mm
type	rectangular
housing material	plastic (ASA, MABS)
front (optics)	PMMA

ambient conditions

operating temperature	-25 ... +65 °C
protection class	IP 67

Retro-reflective sensors**FPDK 14**

order reference	actual range Sb	connection types	output circuit
FPDK 14N5101	7 m	cable 4 pin, 2 m	NPN
FPDK 14N5101/S14	7 m	connector M12 4 pin	NPN
FPDK 14N5101/S35A	7 m	connector M8 4 pin	NPN
FPDK 14N5111	3,2 m	cable 4 pin, 2 m	NPN
FPDK 14N5111/S14	3,2 m	connector M12 4 pin	NPN
FPDK 14N5111/S35A	3,2 m	connector M8 4 pin	NPN
FPDK 14P5101	7 m	cable 4 pin, 2 m	PNP
FPDK 14P5101/S14	7 m	connector M12 4 pin	PNP
FPDK 14P5101/S35A	7 m	connector M8 4 pin	PNP
FPDK 14P5111	3,2 m	cable 4 pin, 2 m	PNP
FPDK 14P5111/S14	3,2 m	connector M12 4 pin	PNP
FPDK 14P5111/S35A	3,2 m	connector M8 4 pin	PNP