

ML Ø66mm Rotating/Flashing/Strobe Beacons



SIGNAL LIGHTS



- Incandescent or Xenon type
- Red, Yellow, Green and Blue lens available
- Smooth or Prism lens
- Stud or Pole mounted
- Wide range of power supply

Order Information

ML	G	F	-	012	-	R										
<table border="1"> <thead> <tr> <th colspan="2">Lens Colors</th> </tr> </thead> <tbody> <tr> <td>R</td> <td>Red</td> </tr> <tr> <td>Y</td> <td>Yellow</td> </tr> <tr> <td>G</td> <td>Green</td> </tr> <tr> <td>B</td> <td>Blue</td> </tr> </tbody> </table>							Lens Colors		R	Red	Y	Yellow	G	Green	B	Blue
Lens Colors																
R	Red															
Y	Yellow															
G	Green															
B	Blue															
<table border="1"> <thead> <tr> <th colspan="2">Power Supply</th> </tr> </thead> <tbody> <tr> <td>012</td> <td>DC 12V</td> </tr> <tr> <td>024</td> <td>DC 24V</td> </tr> <tr> <td>110</td> <td>AC 110V</td> </tr> <tr> <td>220</td> <td>AC 220V</td> </tr> </tbody> </table>							Power Supply		012	DC 12V	024	DC 24V	110	AC 110V	220	AC 220V
Power Supply																
012	DC 12V															
024	DC 24V															
110	AC 110V															
220	AC 220V															
<table border="1"> <thead> <tr> <th colspan="2">Light Style</th> </tr> </thead> <tbody> <tr> <td></td> <td>Rotating Light</td> </tr> <tr> <td>F</td> <td>Flashing Light</td> </tr> <tr> <td>S</td> <td>Strobe Light with Xenon Bulb</td> </tr> </tbody> </table>							Light Style			Rotating Light	F	Flashing Light	S	Strobe Light with Xenon Bulb		
Light Style																
	Rotating Light															
F	Flashing Light															
S	Strobe Light with Xenon Bulb															
<table border="1"> <thead> <tr> <th colspan="2">Mounting</th> </tr> </thead> <tbody> <tr> <td>G</td> <td>Stud Mount</td> </tr> <tr> <td>P</td> <td>Pole Mount</td> </tr> </tbody> </table>							Mounting		G	Stud Mount	P	Pole Mount				
Mounting																
G	Stud Mount															
P	Pole Mount															

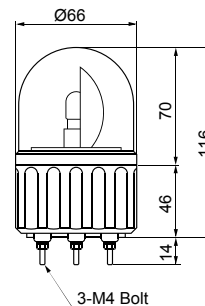
AC 110 or 220V Only ▶

Specifications

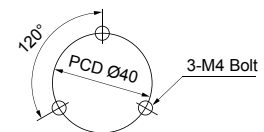
Model	MLG/MLP	MLGF/MLPF	MLGS/MLPS
Bulb Type	Incandescent		Xenon
Power Supply	12VDC, 24VDC, 110VAC, 220VAC		110VAC, 220VAC
Current Draw & Wattage	12VDC	0.7A, 8W	—
	24VDC	0.3A, 8W	—
	110VAC	0.7A, 8W	0.22A, 6W
	220VAC	0.03A, 8W	0.11A, 6W
Rotation Rate	130 times/minute	—	
Flashing rate	—		80 times/minute

Dimensions

unit: mm



Stud Mount Hole Layout



Optional Orders

Replacement Parts

Bulb	Part Number	Specifications
Incandescent	MAB-T15-S-012-08	12V DC, 8 Watt
	MAB-T15-S-024-08	24V DC, 8 Watt
	MAB-T15-S-130-08	110V AC, 8 Watt
	MAB-T15-S-240-08	220V AC, 8 Watt
Xenon Bulb	MAB-STROBE-110-06	110/220V AC, 6 Watt
Lens	LENS-MLG-(□)	Smooth Lens for Rotating Lights
	LENS-MLGF/S-(□)	Prism Lens for Flashing/Strobe Lights

(□): indicates color of Lens; R, Y, G or B

Wall Mount Brackets



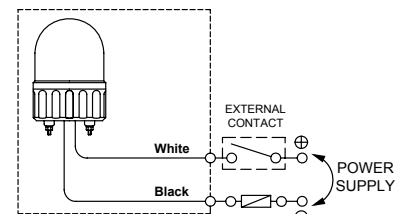
MAM-DS30-BLK (Black)
MAM-DS30-BGE (Beige)

NOTE: See Page 14 for Dimensions.

Wiring Diagram

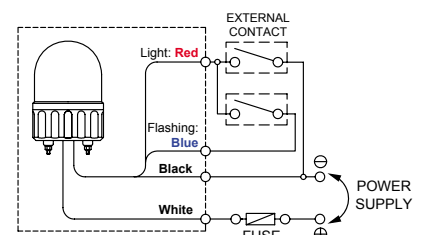
Rotating & Strobe Lights

MLG-□□□□ MLGS-□□□□
MLP-□□□□ MLPS-□□□□



Flashing Lights

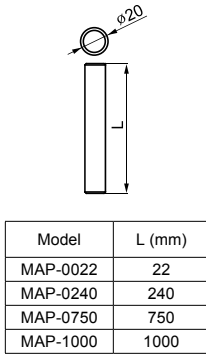
MLGF-□□□□ MLPF-□□□□



Accessories

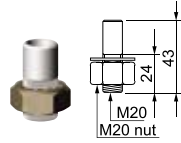
Mounting Poles

MAP-0022
MAP-0240
MAP-0750
MAP-1000

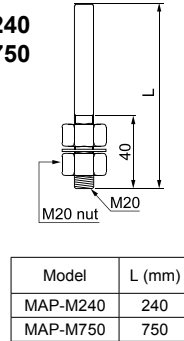


Threaded Poles

MAP-M043

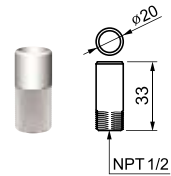


MAP-M240
MAP-M750



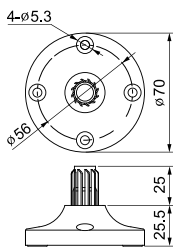
NPT Adaptor

MAP-NPT1/2

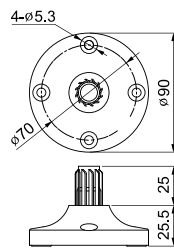


Mounting Bases

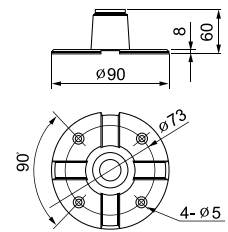
MAM-B070



MAM-B090

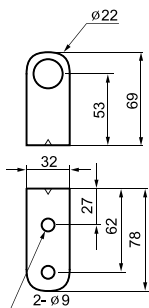


MAM-DS23-20

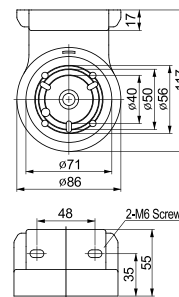


Wall Mount Brackets

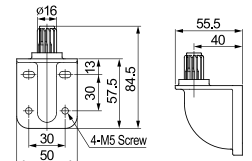
MAM-DS25



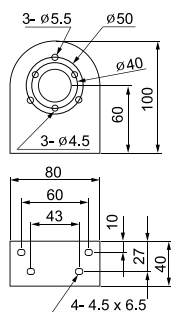
MAM-DS30



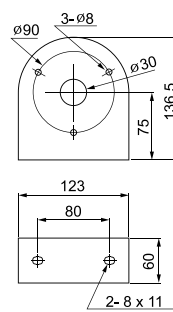
MAM-DS40



MAM-DS26



MAM-DS27



MAM-DS28

